



SOUTH FLORIDA WATER MANAGEMENT DISTRICT

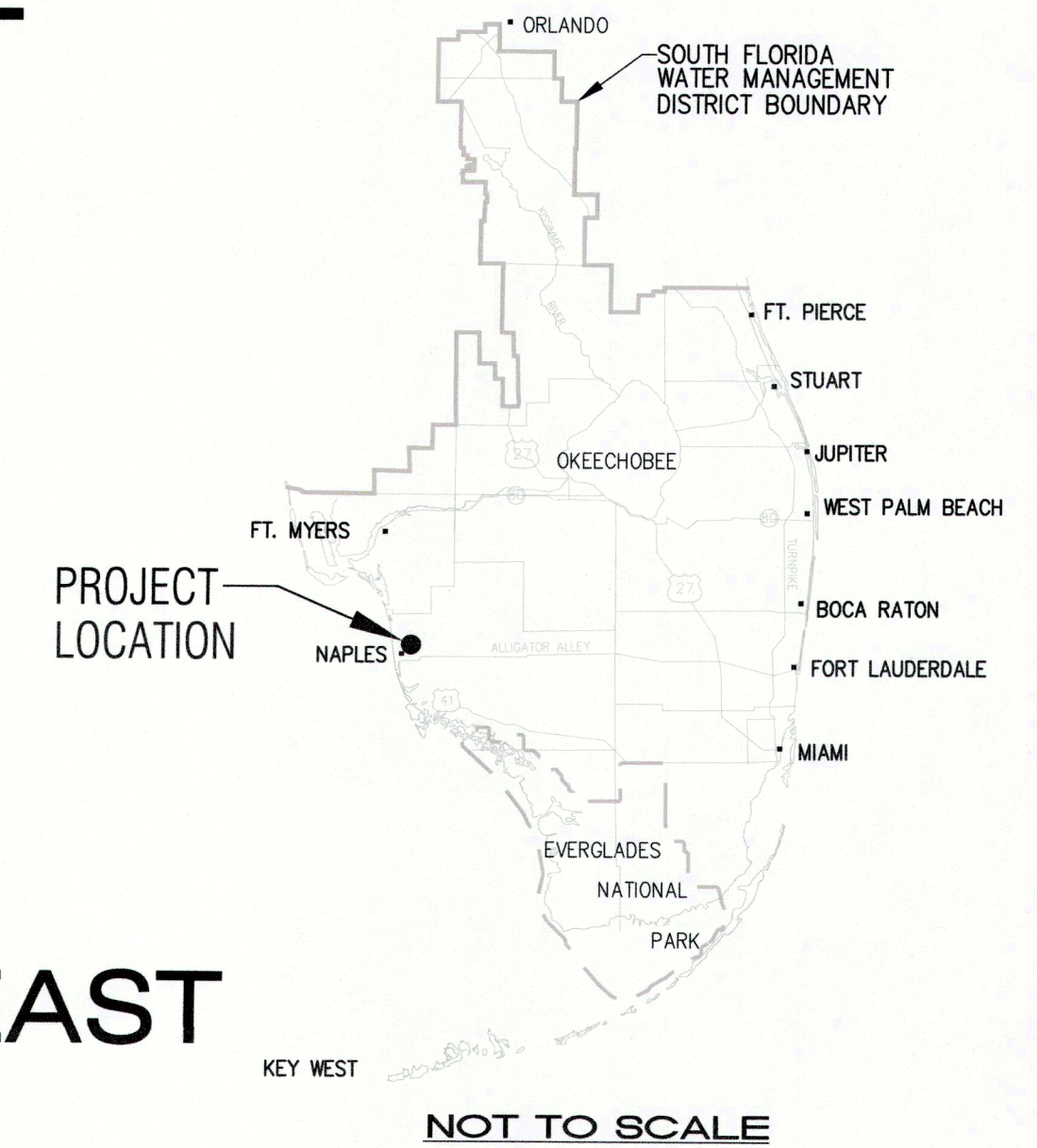
INFRASTRUCTURE MANAGEMENT BUREAU - SURVEY & MAPPING SECTION

BOUNDARY SURVEY OF A PORTION OF

GOLDEN GATE CANAL

SECTIONS 25 & 26, TOWNSHIP 49 SOUTH, RANGE 25 EAST
AND

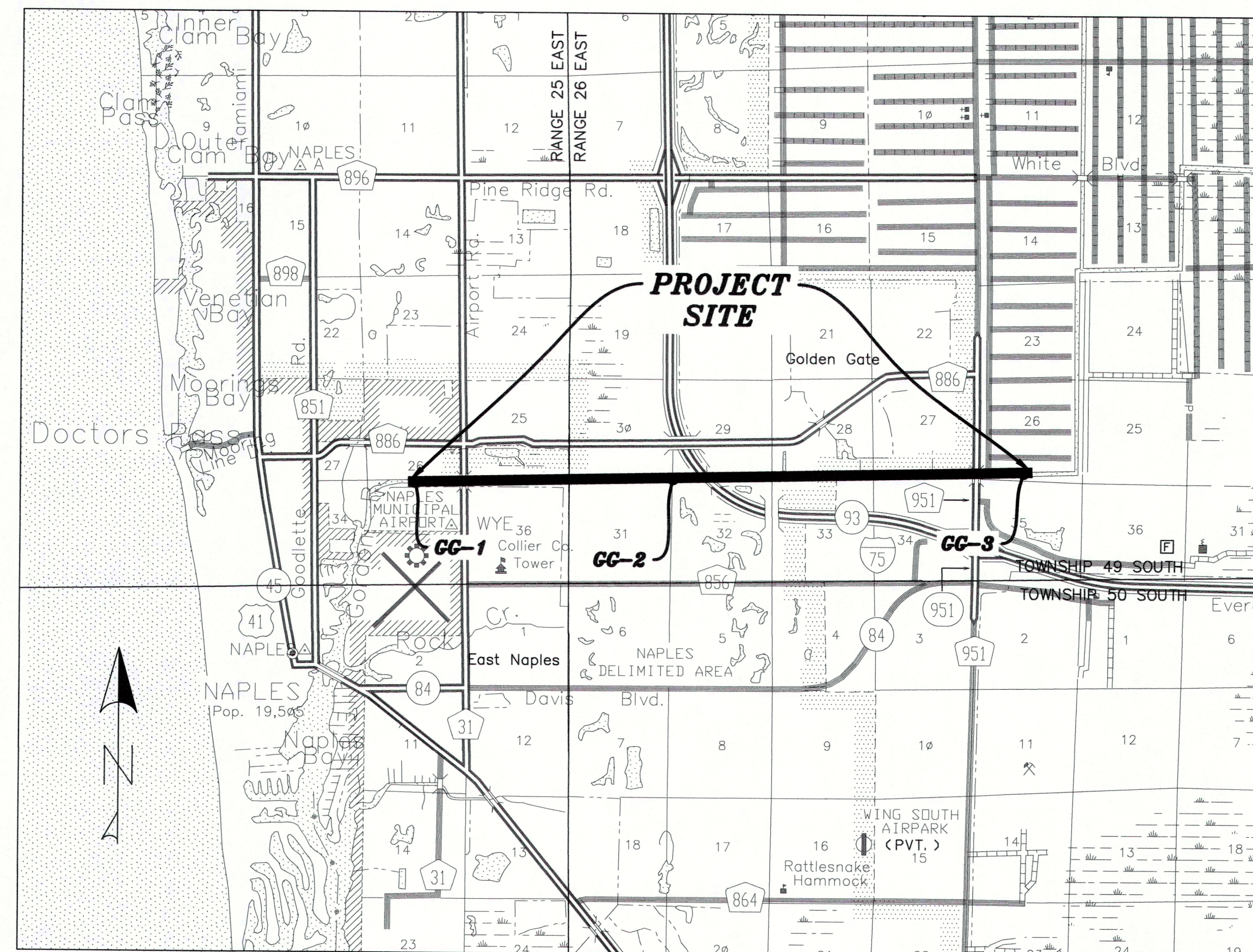
SECTIONS 26, 27, 28, 29 & 30, TOWNSHIP 49 SOUTH, RANGE 26 EAST
NAPLES, COLLIER COUNTY, FLORIDA



NOT TO SCALE

SURVEYOR'S NOTES

1. THE CERTIFICATE OF AUTHORIZATION NUMBER OF CARDNO, INC. IS LB-7975.
2. NO ABSTRACT OF TITLE OR TITLE INSURANCE COMMITMENT WAS REVIEWED AS PART OF THIS SURVEY.
3. THIS SURVEY IS SUBJECT TO ANY FACTS THAT MAY BE DISCLOSED BY A FULL AND ACCURATE TITLE SEARCH.
4. IMPROVEMENTS ON OR ADJACENT TO THE SUBJECT PARCEL HAVE NOT BEEN LOCATED EXCEPT AS SHOWN. NO SUB-SURFACE FOUNDATIONS HAVE BEEN LOCATED AS PART OF THIS SURVEY.
5. THERE ARE NO VISIBLE ENCROACHMENTS OTHER THAN ANY SHOWN.
6. THIS SURVEY DOES NOT MAKE ANY REPRESENTATIONS AS TO ZONING OR DEVELOPMENT RESTRICTIONS ON THE SUBJECT PARCEL.
7. THIS SURVEY DOES NOT REFLECT CHEMICAL CHARACTERISTICS OF THE SURVEYED PARCEL.
8. ALL NOTED RECORDING REFERENCES ARE FROM THE PUBLIC RECORDS OF COLLIER COUNTY.
9. BEARINGS SHOWN ON THIS SURVEY MAP ARE STATE PLANE COORDINATE FOR THE FLORIDA EAST ZONE, NAD '83/90 ADJUSTMENT BASED ON TIES TO THE NGS HIGH PRECISION CONTROL POINT "V 241" PID # AD1266. THE BASIS OF BEARING IS THE SOUTH LINE OF THE NORTHEAST QUARTER OF SECTION 26, TOWNSHIP 49 SOUTH, RANGE 25 EAST AS BEING S 89°41'02" W.
10. THE ON-SITE HORIZONTAL CONTROL AND TIES TO CONTROL MONUMENTS SHOWN WERE ESTABLISHED BY RTK (REAL TIME KINEMATIC) GPS METHODS USING A TRIMBLE MODEL R8 UNIT.
11. ALL DISTANCES ARE IN U.S. FEET AND DECIMALS UNLESS OTHERWISE NOTED.
12. COORDINATES, BEARINGS AND DISTANCES SHOWN ARE MEASURED OR CALCULATED FROM FIELD TIES UNLESS OTHERWISE NOTED.
13. SURVEYED PARCELS 1 AND 2 COMBINED CONTAIN 5,004,433.88 SQUARE FEET OR 114.88 ACRES, MORE OR LESS.
14. DATE OF LAST FIELD WORK CARDNO: 11-3-17; FIELD BOOK 429, PAGE 54.
15. THIS SURVEY OR THE COPIES THEREOF ARE NOT VALID WITHOUT THE SIGNATURE AND THE ORIGINAL RAISED SEAL OF A FLORIDA LICENSED SURVEYOR AND MAPPER. OTHERWISE THIS MAP IS FOR INFORMATIONAL PURPOSES ONLY.
16. ADDITIONS OR DELETIONS TO SURVEY MAPS OR REPORTS BY OTHER THAN THE SIGNING PARTY OR PARTIES IS PROHIBITED WITHOUT THE WRITTEN CONSENT OF THE SIGNING PARTY OR PARTIES.
17. NO ENVIRONMENTAL AUDIT OR JURISDICTIONAL DELINEATION WAS MADE AS PART OF THIS SURVEY.
18. ANY ADJOINING DEED CITES ARE FOR "INFORMATIONAL PURPOSES ONLY"; NO SURVEY WAS MADE OF ADJOINING LANDS.
19. THIS MAP IS INTENDED TO BE DISPLAYED AT A SCALE OF 1" = 600' OR SMALLER.
20. BACKGROUND AERIAL IMAGE OBTAINED FROM LAND BOUNDARY INFORMATION SYSTEM (STATE OF FLORIDA) DATED 2015. RELATIVE POSITIONAL ACCURACY OF AERIAL IMAGERY NOT FIELD VERIFIED. IMAGE IS FOR INFORMATIONAL PURPOSES ONLY.
21. TREE LOCATIONS AND COUNTS PROVIDED BY MARCO SURVEYING AND MAPPING.
22. ONLY TREES FOUR (4) INCHES DIAMETER AT BREAST HEIGHT (DBH) OR GREATER HAVE BEEN INCLUDED IN TREE COUNT.
23. THE DRIPLINE (OUTSIDE LIMITS OF TREE AREAS) WITHIN THE VEGETATED AREAS HAVE BEEN LOCATED USING A COMBINATION OF FIELD SURVEY LOCATIONS AND AERIAL PHOTOGRAPHY.
24. THE COUNT WITHIN EACH VEGETATED AREA IS APPROXIMATE BASED ON A FIELD INSPECTION AND SPECIES TYPE.
25. ALL TREE LOCATIONS WERE MADE PRIOR TO HURRICANE IRMA DATED: SEPTEMBER 10, 2017.
26. DATE OF LAST FIELD WORK MARCO ISLAND SURVEYING: 11-10-17; FIELD BOOK 157, PAGE 31.



LOCATION MAP

INDEX OF SHEETS

SHEET 1	NOTES AND LOCATION MAP
SHEET 2	LEGAL DESCRIPTION, LEGEND AND ABBREVIATIONS
SHEET 3	BOUNDARY AND KEY MAP
SHEET 4-45	RIGHT OF WAY BOUNDARY AND TREE AND VEGETATION DETAILS
SHEET 46	TREE SPECIES, COUNT, AND SIZE CHART

APPROVED BY:

SURVEY SECTION

SURVEYOR IN RESPONSIBLE CHARGE

JASON CORD CHAMBLESS
PROFESSIONAL LICENSED SURVEYOR
FLORIDA CERTIFICATE NO. 7133
(FOR THE FIRM - LB 7975)
SIGNED THIS 20th DAY OF NOVEMBER, 2017



5670 Zip Drive
Fort Myers, FL 33905
Tel: 239.277.0722
Fax: 239.277.7179

CADD FILE NO.
121001.10 BND
DRAWING NO.

1 SHEET OF 46

SOUTH FLORIDA WATER MANAGEMENT DISTRICT
 INFRASTRUCTURE MANAGEMENT BUREAU - SURVEY & MAPPING SECTION
 3301 GUN CLUB ROAD
 WEST PALM BEACH, FLORIDA 33416-4660
 J:\2012\121001.10 GOLDEN GATE CANAL\DRAWING\121001.10 BND.DWG 11/20/2017 12:40 PM

DESCRIPTIONS OF LANDS SURVEYED:

PARCEL 1:

A PORTION OF THE GOLDEN GATE CANAL RIGHT-OF WAY IN SECTION 25 TOWNSHIP 49 SOUTH RANGE 25 EAST, COLLIER COUNTY FLORIDA, DESCRIBED AS FOLLOWS:

THE SOUTH 150 FEET OF SAFE HARBOR, PLAT BOOK 26, PAGE 22, A REPLAT OF TRACTS 155, 156, AND 157 OF GOLDEN GATE ESTATES UNIT NUMBER 28, AS RECORDED IN THE PUBLIC RECORDS, COLLIER COUNTY, FLORIDA;

AND

A PORTION OF THE SOUTH 150 FEET OF GOLDEN GATE ESTATES UNIT NUMBER 28, PLAT BOOK 7, PAGE 19, AS RECORDED IN THE PUBLIC RECORDS, COLLIER COUNTY, FLORIDA;

BEING MORE PARTICULARLY DESCRIBED AS FOLLOWS:

COMMENCING AT THE SOUTHWEST CORNER OF SECTION 26, TOWNSHIP 49 SOUTH, RANGE 26 EAST; THENCE N 89°13'02" E ALONG THE SOUTH LINE OF THE SOUTHWEST 1/4 OF SAID SECTION 26 FOR 100.00 FEET TO THE POINT OF INTERSECTION WITH THE EAST RIGHT-OF-WAY LINE OF A COUNTY CANAL RIGHT-OF-WAY (100 FEET WIDE) AS RECORDED IN PLAT BOOK 7, PAGE 19, PUBLIC RECORDS OF COLLIER COUNTY, FLORIDA; AND **THE POINT OF BEGINNING**;

THENCE N 00°27'49" W ALONG THE EAST LINE OF SAID COUNTY CANAL RIGHT-OF-WAY FOR 150.00 FEET, TO THE INTERSECTION WITH A LINE BEING PARALLEL AND 150.00 FEET NORTH OF THE SOUTH LINE OF THE SOUTHWEST 1/4 OF SECTION 26, TOWNSHIP 49 SOUTH, RANGE 26 EAST; THENCE N 89°13'02" E ALONG SAID PARALLEL LINE FOR 2540.45 FEET; THENCE S 00°46'58" E PERPENDICULAR TO SAID PARALLEL LINE FOR 150.00 FEET TO THE SOUTH 1/4 CORNER OF SECTION 26, TOWNSHIP 49 SOUTH, RANGE 26 EAST; THENCE S 89°13'02" W ALONG THE SOUTH LINE OF THE SOUTHWEST 1/4 OF SECTION 26 FOR 2541.29 FEET **TO THE POINT OF BEGINNING**.

SAID AREA CONTAINING 381130.17 SQUARE FEET OR +/- 8.7495 ACRES.

AND

PARCEL 2:

A PORTION OF THE GOLDEN GATE CANAL RIGHT-OF WAY IN SECTIONS 27, 28, 29, AND 30 TOWNSHIP 49 SOUTH RANGE 25 EAST, COLLIER COUNTY FLORIDA, DESCRIBED AS FOLLOWS:

THE SOUTH 160 FEET OF GOLDEN GATE ESTATES UNIT 8, PART 1, A SUBDIVISION OF PORTIONS OF SECTION 27, TOWNSHIP 49 SOUTH, RANGE 26 EAST, PLAT BOOK 5, PAGE 147, AS RECORDED IN THE PUBLIC RECORDS, COLLIER COUNTY, FLORIDA;

AND

THE SOUTH 160 FEET OF GOLDEN GATE ESTATES UNIT 3, A SUBDIVISION OF PORTIONS OF SECTIONS 22, 27, AND 28, TOWNSHIP 49 SOUTH, RANGE 26 EAST, PLAT BOOK 5, PAGE 97, AS RECORDED IN THE PUBLIC RECORDS, COLLIER COUNTY, FLORIDA;

AND

THE SOUTH 160 FEET OF GOLDEN GATE ESTATES UNIT 7, A SUBDIVISION OF PORTIONS OF SECTIONS 27 AND 28, TOWNSHIP 49 SOUTH, RANGE 26 EAST, PLAT BOOK 5, PAGE 135 AS RECORDED IN THE PUBLIC RECORDS, COLLIER COUNTY, FLORIDA;

AND

A PORTION OF THE SOUTH 160 FEET OF GERMAN WOODS, A SUBDIVISION OF TRACT 118, GOLDEN GATE ESTATES UNIT 30, TOWNSHIP 49 SOUTH, RANGE 26 EAST, PLAT BOOK 23 PAGE 62, AS RECORDED IN THE PUBLIC RECORDS, COLLIER COUNTY, FLORIDA;

AND

A PORTION OF THE SOUTH 160 FEET OF BASS POINT, A SUBDIVISION OF THE SOUTHERLY PART OF TRACT 48, DESCRIBED AS TRACT 48, GOLDEN GATE ESTATES UNIT 30, TOWNSHIP 49 SOUTH, RANGE 26 EAST, PLAT BOOK 18 PAGE 57, AS RECORDED IN THE PUBLIC RECORDS, COLLIER COUNTY, FLORIDA;

AND

A PORTION OF THE SOUTH 160 FEET OF GOLDEN GATE ESTATES UNIT 30, TOWNSHIP 49 SOUTH, RANGE 26 EAST, PLAT BOOK 7 PAGE 58, AS RECORDED IN THE PUBLIC RECORDS, COLLIER COUNTY, FLORIDA;

AND

THE SOUTH 160 FEET OF EDgewater ACRES, A REPLAT OF TRACT 60, GOLDEN GATE ESTATES UNIT 29, TOWNSHIP 49 SOUTH, RANGE 26 EAST, PLAT BOOK 35 PAGE 65, AS RECORDED IN THE PUBLIC RECORDS, COLLIER COUNTY, FLORIDA;

AND

THE SOUTH 160 FEET OF MANHARDT SUBDIVISION, A REPLAT OF A PORTION OF TRACT 91, GOLDEN GATE ESTATES UNIT 29, TOWNSHIP 49 SOUTH, RANGE 26 EAST, PLAT BOOK 28 PAGE 14, AS RECORDED IN THE PUBLIC RECORDS, COLLIER COUNTY, FLORIDA;

AND

THE SOUTH 160 FEET OF GOLDEN GATE ESTATES UNIT 29, TOWNSHIP 49 SOUTH, RANGE 26 EAST, PLAT BOOK 28 PAGE 14, AS RECORDED IN THE PUBLIC RECORDS, COLLIER COUNTY, FLORIDA;

AND

THE SOUTH 160 FEET OF GOLDEN GATE ESTATES UNIT 29, TOWNSHIP 49 SOUTH, RANGE 26 EAST, PLAT BOOK 28 PAGE 14, AS RECORDED IN THE PUBLIC RECORDS, COLLIER COUNTY, FLORIDA;

AND

THE SOUTH 160 FEET OF GOLDEN GATE ESTATES UNIT 29, TOWNSHIP 49 SOUTH, RANGE 26 EAST, PLAT BOOK 28 PAGE 14, AS RECORDED IN THE PUBLIC RECORDS, COLLIER COUNTY, FLORIDA;

AND

THE SOUTH 160 FEET OF GOLDEN GATE ESTATES UNIT 29, TOWNSHIP 49 SOUTH, RANGE 26 EAST, PLAT BOOK 28 PAGE 14, AS RECORDED IN THE PUBLIC RECORDS, COLLIER COUNTY, FLORIDA;

AND

THE SOUTH 160 FEET OF GOLDEN GATE ESTATES UNIT 29, TOWNSHIP 49 SOUTH, RANGE 26 EAST, PLAT BOOK 28 PAGE 14, AS RECORDED IN THE PUBLIC RECORDS, COLLIER COUNTY, FLORIDA;

AND

THE SOUTH 160 FEET OF GOLDEN GATE ESTATES UNIT 29, TOWNSHIP 49 SOUTH, RANGE 26 EAST, PLAT BOOK 28 PAGE 14, AS RECORDED IN THE PUBLIC RECORDS, COLLIER COUNTY, FLORIDA;

AND

THE SOUTH 160 FEET OF GOLDEN GATE ESTATES UNIT 29, TOWNSHIP 49 SOUTH, RANGE 26 EAST, PLAT BOOK 28 PAGE 14, AS RECORDED IN THE PUBLIC RECORDS, COLLIER COUNTY, FLORIDA;

AND

THE SOUTH 160 FEET OF GOLDEN GATE ESTATES UNIT 29, TOWNSHIP 49 SOUTH, RANGE 26 EAST, PLAT BOOK 28 PAGE 14, AS RECORDED IN THE PUBLIC RECORDS, COLLIER COUNTY, FLORIDA;

AND

THE SOUTH 160 FEET OF GOLDEN GATE ESTATES UNIT 29, TOWNSHIP 49 SOUTH, RANGE 26 EAST, PLAT BOOK 28 PAGE 14, AS RECORDED IN THE PUBLIC RECORDS, COLLIER COUNTY, FLORIDA;

AND

THE SOUTH 160 FEET OF GOLDEN GATE ESTATES UNIT 29, TOWNSHIP 49 SOUTH, RANGE 26 EAST, PLAT BOOK 28 PAGE 14, AS RECORDED IN THE PUBLIC RECORDS, COLLIER COUNTY, FLORIDA;

AND

THE SOUTH 160 FEET OF GOLDEN GATE ESTATES UNIT 29, TOWNSHIP 49 SOUTH, RANGE 26 EAST, PLAT BOOK 28 PAGE 14, AS RECORDED IN THE PUBLIC RECORDS, COLLIER COUNTY, FLORIDA;

AND

THE SOUTH 160 FEET OF GOLDEN GATE ESTATES UNIT 29, TOWNSHIP 49 SOUTH, RANGE 26 EAST, PLAT BOOK 28 PAGE 14, AS RECORDED IN THE PUBLIC RECORDS, COLLIER COUNTY, FLORIDA;

DESCRIPTIONS OF LANDS SURVEYED CONTINUED:

A PORTION OF THE SOUTH 160 FEET OF GOLDEN GATE ESTATES UNIT 29, TOWNSHIP 49 SOUTH, RANGE 26 EAST, PLAT BOOK 7 PAGE 57, AS RECORDED IN THE PUBLIC RECORDS, COLLIER COUNTY, FLORIDA;

AND

THE SOUTH 160 FEET OF THE SOUTHEAST 1/4 OF SECTION 26, TOWNSHIP 49 SOUTH, RANGE 25 EAST, EXCEPTING HOWEVER THE EAST 50 FEET THEREOF PREVIOUSLY CONVEYED TO THE STATE OF FLORIDA;

AND

A PORTION OF THE SOUTH 160 FEET OF SECTION 25, TOWNSHIP 49 SOUTH, RANGE 25 EAST, EXCEPTING THE WEST 50 FEET OF THEREOF PREVIOUSLY CONVEYED TO THE STATE OF FLORIDA; BEING MORE PARTICULARLY DESCRIBED AS FOLLOWS:

COMMENCING AT THE SOUTHWEST CORNER OF SECTION 26, TOWNSHIP 49 SOUTH, RANGE 26 EAST; THENCE S 87°52'22" W ALONG THE SOUTH LINE OF THE SOUTHEAST 1/4 OF SECTION 27, TOWNSHIP 49 SOUTH, RANGE 26 EAST FOR 100.04 FEET, TO THE POINT OF INTERSECTION WITH THE WEST RIGHT-OF-WAY LINE OF COLLIER BOULEVARD (CR 951 / SR858), AS RECORDED IN PLAT BOOK 7, PAGE 19, PUBLIC RECORDS OF COLLIER COUNTY, FLORIDA; AND **THE POINT OF BEGINNING**;

THENCE CONTINUE S 87°52'22" W ALONG SAID SOUTH LINE OF THE SOUTHEAST 1/4 OF SAID SECTION 27 FOR 2630.08 FEET, TO THE SOUTH 1/4 CORNER OF SAID SECTION 27, TOWNSHIP 49 SOUTH, RANGE 26 EAST;

THENCE S 87°57'30" W ALONG THE SOUTH LINE OF THE SOUTHWEST 1/4 OF SECTION 27 FOR 2632.54 FEET, TO THE SOUTHEAST CORNER OF SECTION 28, TOWNSHIP 49 SOUTH, RANGE 26 EAST;

THENCE S 87°54'25" W ALONG THE SOUTH LINE OF THE SOUTHEAST 1/4 OF SECTION 28 FOR 2634.66 FEET, TO THE SOUTH 1/4 CORNER OF SECTION 28, TOWNSHIP 49 SOUTH, RANGE 26 EAST;

THENCE S 87°54'12" W ALONG THE SOUTH LINE OF THE SOUTHWEST 1/4 OF SECTION 28 FOR 2634.73 FEET, TO THE SOUTHEAST CORNER OF SECTION 29, TOWNSHIP 49 SOUTH, RANGE 26 EAST;

THENCE S 89°25'07" W ALONG THE SOUTH LINE OF THE SOUTHEAST 1/4 OF SECTION 29 FOR 2637.25 FEET, TO THE SOUTH 1/4 CORNER OF SECTION 29, TOWNSHIP 49 SOUTH, RANGE 26 EAST;

THENCE S 89°24'25" W ALONG THE SOUTH LINE OF THE SOUTHWEST 1/4 OF SECTION 29 FOR 2634.84 FEET, TO THE SOUTHEAST CORNER OF SECTION 30, TOWNSHIP 49 SOUTH, RANGE 26 EAST;

THENCE S 89°29'35" W ALONG THE SOUTH LINE OF THE SOUTHEAST 1/4 OF SECTION 30 FOR 2633.76 FEET, TO THE SOUTH 1/4 CORNER OF SECTION 30, TOWNSHIP 49 SOUTH, RANGE 26 EAST;

THENCE S 89°37'18" W ALONG THE SOUTH LINE OF THE SOUTHWEST 1/4 OF SECTION 30 FOR 2633.40 FEET, TO THE SOUTHEAST CORNER OF SECTION 25, TOWNSHIP 49 SOUTH, RANGE 25 EAST;

THENCE S 89°07'14" W ALONG THE SOUTH LINE OF THE SOUTHEAST 1/4 OF SECTION 25 FOR 2645.37 FEET, TO THE SOUTH 1/4 CORNER OF SECTION 25, TOWNSHIP 49 SOUTH, RANGE 25 EAST;

THENCE S 89°28'18" W ALONG THE SOUTH LINE OF THE SOUTHWEST 1/4 OF SECTION 25 FOR 2647.66 FEET, TO THE SOUTHEAST CORNER OF SECTION 26, TOWNSHIP 49 SOUTH, RANGE 25 EAST;

THENCE S 89°41'02" W ALONG THE SOUTH LINE OF THE SOUTHEAST 1/4 OF SECTION 26 FOR 2631.66 FEET; THENCE N 00°15'28" W FOR 160.00 FEET, TO A LINE BEING PARALLEL AND 160.00 FEET NORTH OF THE SOUTH LINE OF THE SOUTHEAST 1/4 OF SECTION 26, TOWNSHIP 49 SOUTH, RANGE 25 EAST;

THENCE, N 89°41'02" E ALONG SAID PARALLEL LINE FOR 2631.16 FEET TO A POINT OF INTERSECTION OF SAID LINE, AND A LINE PARALLEL AND 160 FEET NORTH OF THE SOUTH LINE OF THE SOUTHWEST 1/4 OF SECTION 25, TOWNSHIP 49 SOUTH, RANGE 25 EAST;

THENCE, N 89°26'16" E ALONG SAID PARALLEL LINE FOR 2646.87 FEET TO A POINT OF INTERSECTION OF SAID LINE AND A LINE PARALLEL AND 160 FEET NORTH OF THE SOUTH LINE OF THE SOUTHEAST 1/4 OF SECTION 25, TOWNSHIP 49 SOUTH, RANGE 25 EAST;

DESCRIPTIONS OF LANDS SURVEYED CONTINUED:

THENCE, N 89°07'14" E ALONG SAID PARALLEL LINE FOR 2645.63 FEET TO A POINT OF INTERSECTION OF SAID LINE AND A LINE PARALLEL AND 160 FEET NORTH OF THE SOUTH LINE OF THE SOUTHWEST 1/4 OF SECTION 30, TOWNSHIP 49 SOUTH, RANGE 26 EAST;

THENCE, N 89°37'18" E ALONG SAID PARALLEL LINE FOR 2633.92 FEET TO A POINT OF INTERSECTION OF SAID LINE AND A LINE PARALLEL AND 160 FEET NORTH OF THE SOUTH LINE OF THE SOUTHEAST 1/4 OF SECTION 30, TOWNSHIP 49 SOUTH, RANGE 26 EAST;

THENCE, N 89°29'35" E ALONG SAID PARALLEL LINE FOR 2633.46 FEET TO A POINT OF INTERSECTION OF SAID LINE AND A LINE PARALLEL AND 160 FEET NORTH OF THE SOUTH LINE OF THE SOUTHWEST 1/4 OF SECTION 29, TOWNSHIP 49 SOUTH, RANGE 26 EAST;

THENCE, N 89°24'25" E ALONG SAID PARALLEL LINE FOR 2634.72 FEET TO A POINT OF INTERSECTION OF SAID LINE AND A LINE PARALLEL AND 160 FEET NORTH OF THE SOUTH LINE OF THE SOUTHEAST 1/4 OF SECTION 29, TOWNSHIP 49 SOUTH, RANGE 26 EAST;

THENCE, N 89°25'07" E ALONG SAID PARALLEL LINE FOR 2635.16 FEET TO A POINT OF INTERSECTION OF SAID LINE AND A LINE PARALLEL AND 160 FEET NORTH OF THE SOUTH LINE OF THE SOUTHWEST 1/4 OF SECTION 28, TOWNSHIP 49 SOUTH, RANGE 26 EAST;

THENCE, N 87°54'12" E ALONG SAID PARALLEL LINE FOR 2632.62 FEET TO A POINT OF INTERSECTION OF SAID LINE AND A LINE PARALLEL AND 160 FEET NORTH OF THE SOUTH LINE OF THE SOUTHEAST 1/4 OF SECTION 28, TOWNSHIP 49 SOUTH, RANGE 26 EAST;

THENCE, N 87°54'25" E ALONG SAID PARALLEL LINE FOR 2634.67 FEET TO A POINT OF INTERSECTION OF SAID LINE AND A LINE PARALLEL AND 160 FEET NORTH OF THE SOUTH LINE OF THE SOUTHWEST 1/4 OF SECTION 27, TOWNSHIP 49 SOUTH, RANGE 26 EAST;

THENCE, N 87°57'30" E ALONG SAID PARALLEL LINE FOR 2632.56 FEET TO A POINT OF INTERSECTION OF SAID LINE AND A LINE PARALLEL AND 160 FEET NORTH OF THE SOUTH LINE OF THE SOUTHWEST 1/4 OF SECTION 27, TOWNSHIP 49 SOUTH, RANGE 26 EAST;

THENCE, N 87°52'22" E FOR 2534.61 FEET, TO A POINT OF INTERSECTION OF SAID LINE AND THE WEST RIGHT-OF-WAY LINE OF COLLIER BOULEVARD (CR 951 / SR858), AS RECORDED IN PLAT BOOK 7, PAGE 19, PUBLIC RECORDS OF COLLIER COUNTY, FLORIDA;

THENCE S 00°27'49" E, ALONG THE WEST RIGHT-OF-WAY LINE OF SAID COLLIER BOULEVARD (CR 951 / SR858) FOR 160.07 FEET, TO **THE POINT OF BEGINNING**.

SAID AREA CONTAINING 4623033.71 SQUARE FEET OR +/- 106.1364 ACRES.

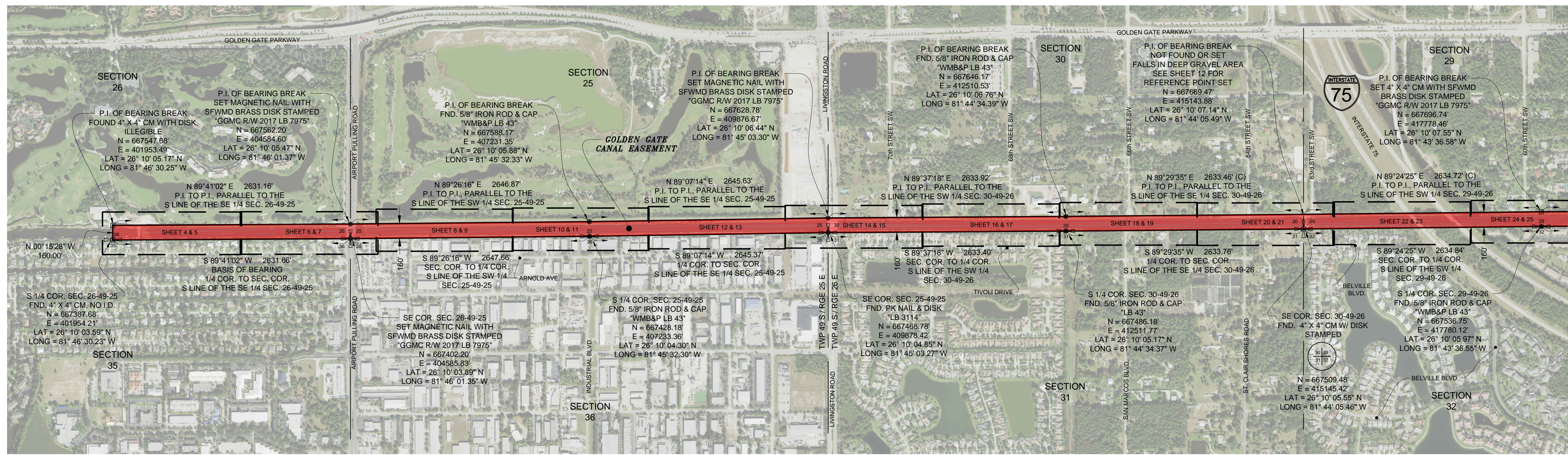
ABBREVIATIONS:

- AC. = ACRE
- A.C. = AIR CONDITIONER
- A.E. = ACCESS EASEMENT
- A.K.A. = ALSO KNOWN AS
- ALUM. = ALUMINUM
- APPR. = APPROXIMATE
- ASPH. = ASPHALT
- AVE. = AVENUE
- B.A.E. = BICYCLE ACCESS EASEMENT
- B.W.F. = BARBED WIRE FENCE
- BLDG. = BUILDING
- BOULEV. = BOULEVARD
- BM = BENCHMARK
- BOC = BACK OF CURB
- BOW = BACK OF WALK
- B.P. = BOUNDARY POINT
- BSM = BUREAU OF SURVEYING AND MAPPING
- (C) = CALCULATED
- CATV = CABLE TELEVISION
- CB = CATCH BASIN
- CBS = CONCRETE BLOCK STRUCTURE
- C.C.R. = CERTIFIED CORNER RECORD
- CDB = CHORD BEARING
- CH = CHORD
- CLF = CHAIN LINK FENCE
- CM = CONCRETE MONUMENT
- C.M.E. = CANAL MAINTENANCE EASEMENT
- CMP = CORRUGATED METAL PIPE
- CPP = CORRUGATED PLASTIC PIPE
- C.O. = CLEANOUT
- CONC. = CONCRETE
- CONT. = CONTROL
- COR. = CORNER
- CORP. = CORPORATION
- C.P. = CONTROL POINT
- C.R. = COUNTY ROAD
- CT. = COURT
- C.U.E. = COUNTY UTILITY EASEMENT
- (D) = DEED
- D.E. = DRAINAGE EASEMENT
- (DESC.) = DESCRIPTION
- DH = DRILL HOLE
- DIA. = DIAMETER
- DR. = DRIVE
- DWG. = DRAWING
- E = EASTING
- EL. = ELEVATION
- ELEC. = ELECTRIC
- EOP = EDGE OF PAVEMENT
- EOW = EDGE OF WATER
- ESMT. = EASEMENT
- EXIST. = EXISTING
- (F) = FIELD
- FDEP = FLORIDA DEPARTMENT OF ENVIRONMENTAL PROTECTION
- FDOT = FLORIDA DEPARTMENT OF TRANSPORTATION
- FEMA = FEDERAL EMERGENCY MANAGEMENT AGENCY
- F.F. = FINISHED FLOOR
- FND = FOUND
- FPL OR FP&L = FLORIDA POWER & LIGHT
- F.S. = FLORIDA STATUTES
- FT. = FOOT / FEET
- G.G.E. = GOLDEN GATE ESTATES
- GGMC = GOLDEN GATE MAIN CANAL
- GLO = GENERAL LAND OFFICE
- GPS = GLOBAL POSITIONING SYSTEM
- I.D. = IDENTIFICATION
- I.D.D. = IONA DRAINAGE DISTRICT
- I.N. = INSTRUMENT NUMBER
- INC. = INCORPORATED
- INV. = INVERT
- I.P. = IRON PIPE
- IR = IRON ROD (5/8" DIA. U.O.N.)
- IRC OR IR&C = IRON ROD & CAP
- IRR. = IRRIGATION
- L = LENGTH
- LABINS = LAND BOUNDARY INFORMATION SYSTEM (STATE OF FLORIDA)
- LAT = LATITUDE
- LB = LICENSED BUSINESS
- L.B.E. = LANDSCAPE BUFFER EASEMENT
- LN. = LANE
- LONG = LONGITUDE
- LS = LICENSED SURVEYOR
- LT = LEFT
- (M) = MEASURED
- MAIN. = MAINTENANCE
- MAG = MAGNETIC
- MES = MITERED END SECTION
- MH = MANHOLE
- MHWL = MEAN HIGH WATER LINE
- MISC. = MISCELLANEOUS
- MON = MONUMENT
- N = NORTHING
- NAD = NORTH AMERICAN DATUM
- N.A.V.D. = NORTH AMERICAN VERTICAL DATUM
- NGS = NATIONAL GEODETIC SURVEY
- N.G.V.D. = NATIONAL GEODETIC VERTICAL DATUM (1929)
- No. = NUMBER
- N.T.S. = NOT TO SCALE
- N.T.T. = NAIL & TIN TAB
- O/H = OVERHANG
- O.H.W.L. = ORDINARY HIGH WATER LINE
- O.H.W.M. = ORDINARY HIGH WATER MARK
- O.R. = OFFICIAL RECORD BOOK
- (P) = PLAT
- PB = PLAT BOOK
- P.C. = POINT OF CURVATURE
- PCP = PERMANENT CONTROL POINT
- P.E. = CONSERVATION EASEMENT
- PG (S) = PAGE(S)
- P.I. = POINT OF INTERSECTION
- PKNSD = PARKER-KALON NAIL & DISK
- PKWY. = PARKWAY
- PL = PROPERTY LINE
- PLS = PROFESSIONAL LAND SURVEYOR
- P.O.B. = POINT OF BEGINNING
- P.O.C. = POINT OF COMMENCEMENT
- P.O.T. = POINT OF TERMINUS
- PP = POWER POLE
- P.R.M. = PERMANENT REFERENCE MONUMENT
- PROP. = PROPERTY
- PSM = PROFESSIONAL SURVEYOR AND MAPPER
- PT. = POINT
- P.T. = POINT OF TANGENCY
- P.U.E. = PUBLIC UTILITY EASEMENT
- PVC = POLY VINYL CHLORIDE
- R = RADIUS OR RIGHT
- (R) = RECORD
- RCP = REINFORCED CONCRETE PIPE
- RGE = RANGE
- RLS = REGISTERED LAND SURVEYOR
- R.P. = REFERENCE POINT
- R.R. = RAILROAD
- RT = RIGHT
- RTA = RIGHT ANGLE
- RAW = RIGHT-OF-WAY
- S.E. = SLOPE EASEMENT
- SEC. = SECTION
- S.F. = SQUARE FEET
- SWFMD = SOUTH FLORIDA WATER MANAGEMENT DISTRICT
- SHT. = SHEET
- S.P.E. = SPECIAL PURPOSE EASEMENT
- S.R. = STATE ROAD
- S.S. = SANITARY SEWER
- STA. = STATION
- ST. = STREET
- SWFWM = SOUTHWEST FLORIDA WATER MANAGEMENT DISTRICT
- T = TANGENT
- TEL = TELEPHONE
- TIIF = TRUSTEES OF THE INTERNAL IMPROVEMENT FUND OF THE STATE OF FLORIDA
- TIITF = BOARD OF TRUSTEES OF THE INTERNAL IMPROVEMENT TRUST FUND OF THE STATE OF FLORIDA
- TOB = TOP OF BANK
- TOE = TOE OF SLOPE
- T.P. = TRAVERSE POINT
- TRANS. = TRANSITION
- TWP = TOWNSHIP
- TYP = TYPICAL
- U.E. = UTILITY EASEMENT
- U.O.N. = UNLESS OTHERWISE NOTED
- USGS = UNITED STATES GEOLOGICAL SURVEY
- w/ = WITH
- Y.D. = YARD DRAIN
- Δ = DELTA ANGLE
- ± = MORE OR LESS
- # = NUMBER
- ** = STAMPING OF CAP OR DISK

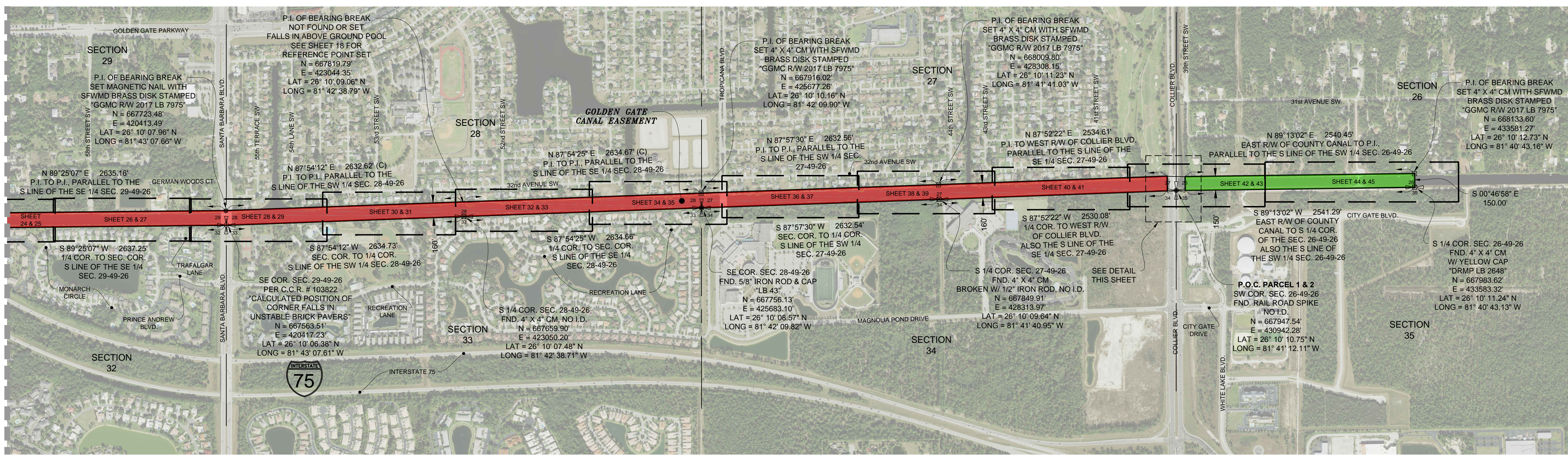
LEGEND:

- AVV AIR RELEASE VALVE
- BACKFLOW PREVENTER
- BENCH MARK
- BOLLARD
- CABLE RISER
- CABLE TV BOX
- CATCH BASIN
- CENTERLINE
- CLEANOUT
- BOUNDARY OR REFERENCE POINT NUMBER
- CONCRETE POWER POLE
- DRAINAGE MANHOLE
- ELECTRICAL BOX
- ELECTRIC OUTLET
- ELECTRIC METER
- ELECTRIC LINE
- ELECTRIC FLAG
- EXISTING ELEVATION
- FENCE - BARBED WIRE
- FENCE - CHAIN LINK
- FENCE - WOOD
- FIBER OPTIC MARKER / POST
- FIBER OPTIC BOX
- FIRE HYDRANT
- FIRE VALVE
- FLAG POLE
- FORCE MAIN
- FORCE MAIN AIR RELEASE VALVE
- GAS PIPELINE MARKER
- GROUND LIGHT
- GUARD RAIL
- GUY POLE
- GUY WIRE
- HANDI-CAP PARKING
- HOSE BIB
- IRRIGATION BOX
- IRRIGATION VALVE
- LIGHT POLE
- MAIL BOX
- MITERED END
- WELL
- OVERHEAD POWER LINE
- OVERHEAD TELEPHONE LINE
- POWER POLE
- POWER POLE w/RISER
- RECLAIM WATER LINE
- RECLAIM WATER LINE FLAG
- SEWER LINE FLAG
- SANITARY SEWER LINE
- SEWER MANHOLE
- SEWER VALVE
- SECURITY SENSOR
- SIGN SINGLE POST
- SIGN DOUBLE POST
- SPRINKLER
- STEEL POST
- TELEPHONE BOX OR VAULT
- TELEPHONE CANISTER
- TELEPHONE FLAG
- TELEPHONE MANHOLE
- TELEPHONE RISER
- TOE OF SLOPE
- TOP OF BANK
- TRAFFIC SIGNAL BOX
- TRAFFIC SIGNAL POLE
- UNDERGROUND UTILITIES
- WATER MAIN
- WATER LINE FLAG
- WATER METER
- WATER VALVE
- WOOD SUPPORT POLE
- YARD DRAIN
- CROSS WALK SIGNAL POLE
- WOOD POST
- BUSH
- CABBAGE PALM
- OAK TREE
- PALM TREE
- PINE TREE
- SHADE TREE (VARIOUS TYPE)
- VEGETATION LINE
- FOUND CONCRETE MONUMENT
- FOUND DRILL HOLE
- FOUND IRON ROD
- FOUND IRON ROD & CAP
- FOUND IRON PIPE
- FOUND NAIL & DISK
- FOUND PARKER KALON NAIL
- FOUND PARKER KALON NAIL & DISK
- SET CONCRETE MONUMENT U.O.N.
- SET DRILL HOLE
- SET 5/8" IRON ROD & CAP "CARDNO LB 7975" U.O.N.
- SET MAG NAIL & DISK "CARDNO LB 7975" U.O.N.
- QUARTER SECTION CORNER
- SECTION CORNER

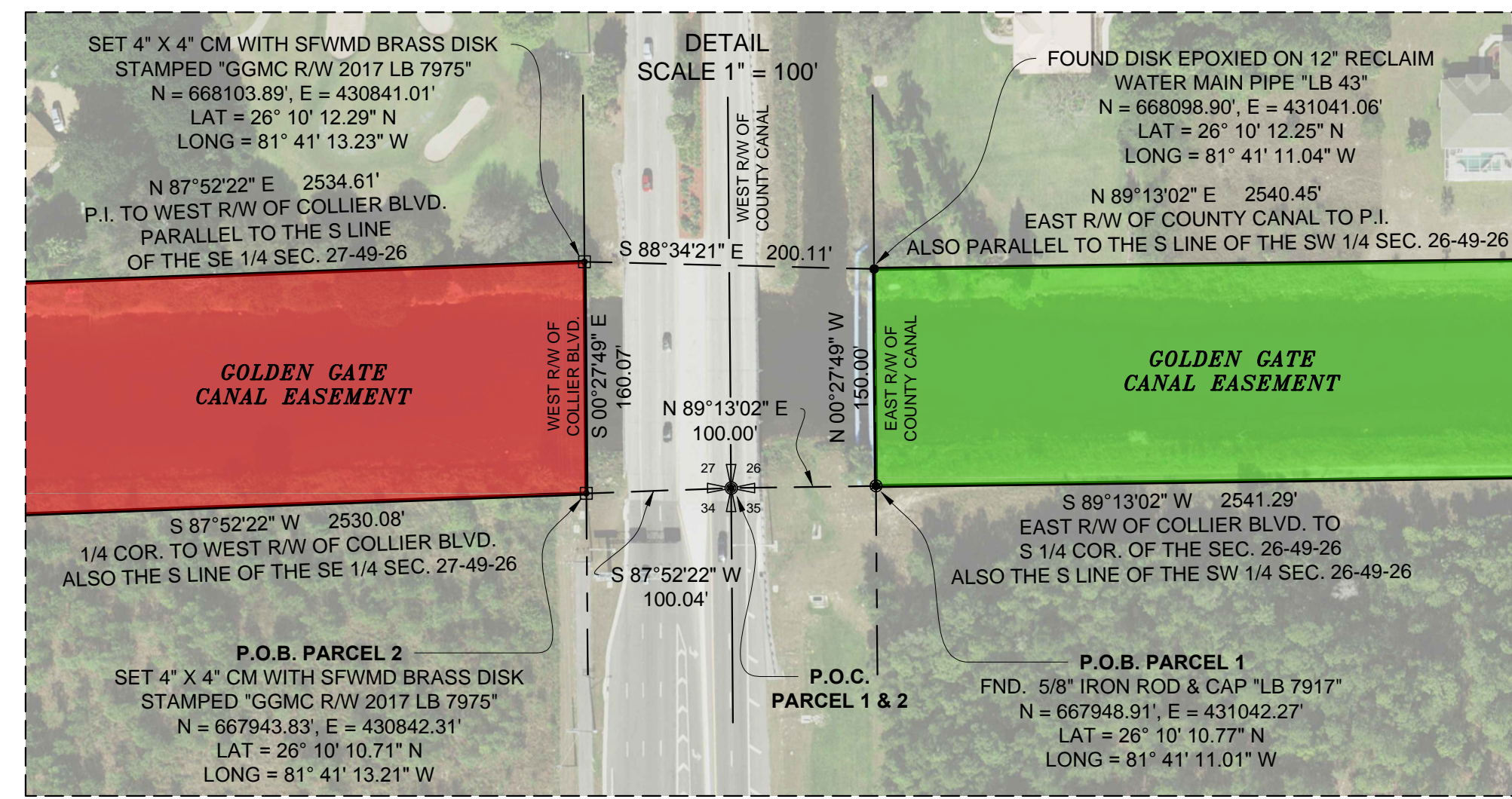
SOUTH FLORIDA WATER MANAGEMENT DISTRICT
 INFRASTRUCTURE MANAGEMENT BUREAU - SURVEY & MAPPING SECTION
 3301 GUN CLUB ROAD, WEST PALM BEACH, FLORIDA 33416-4680
 DRAWN: _____ CHECKED: _____ DATE: _____
 FIELD DATES: SEE NOTE 14
 FIELD BOOK(S): SEE NOTE 14
 PAGE(S): SEE NOTE 14
 DATA COLLECTOR FILE(S): _____
 BOUNDARY SURVEY OF A PORTION OF GOLDEN GATE CANAL LYING IN NAPLES, COLLIER COUNTY, FLORIDA SECTIONS 25 & 26, TWP 49 S, RANGE 25 E SECTIONS 26, 27, 28, 29 AND 30, TWP 49 S, RANGE 26 E
 CADD FILE NO. 121001.10 BND
 DRAWING NO. _____
 SHEET OF 46
 J:\2012\121001.10 GOLDEN GATE CANAL\DRAWING\121001.10 BND.DWG 11/20/2017 9:47 AM



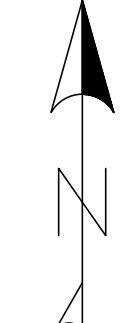
MATCHLINE
SEE LOWER LEFT



MATCHLINE
SEE UPPER RIGHT



■ = PARCEL 1
■ = PARCEL 2

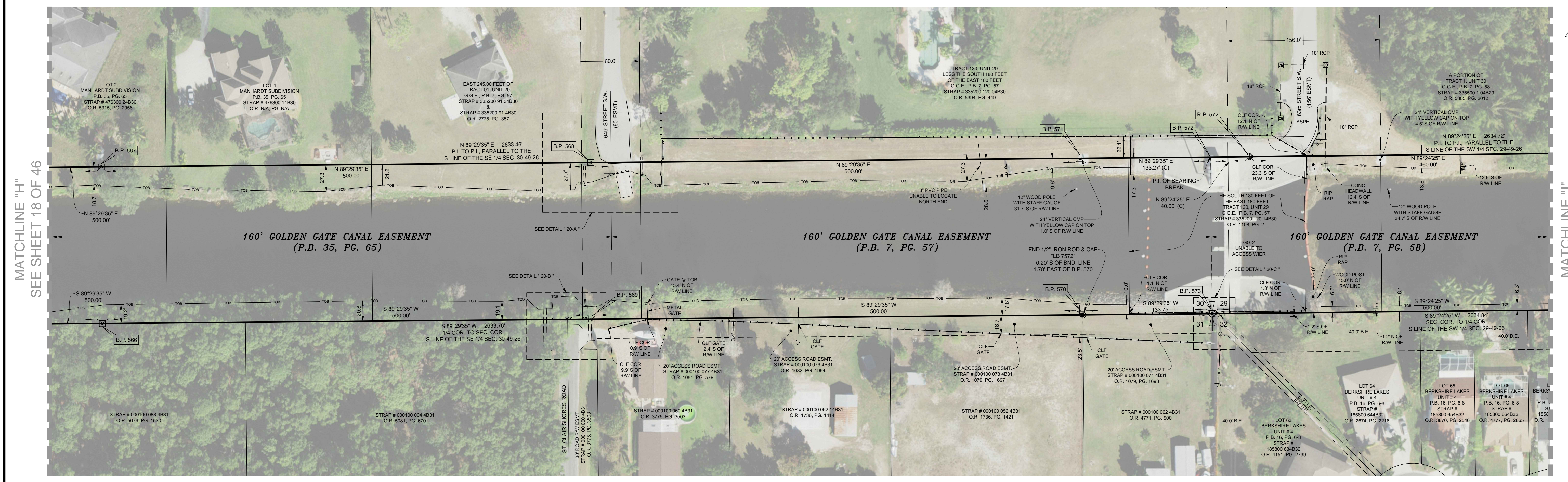
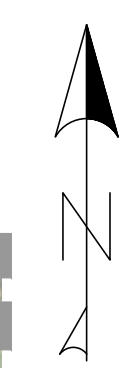


SOUTH FLORIDA WATER MANAGEMENT DISTRICT
 INFRASTRUCTURE MANAGEMENT BUREAU - SURVEY & MAPPING SECTION
 3301 GUN CLUB ROAD
 WEST PALM BEACH, FLORIDA 33416-4680
 J:\2012\121001.10 GOLDEN GATE CANAL\DRAWING\121001.10 BND.DWG 11/20/2017 9:49 AM

DRAWN: R.J.O.	CHECKED: CC	DATE: 7-10-17	SCALE:
FIELD PERSONS: LD, J.C., RE, R.P., G.P., J.R., & J.D.			
FIELD DATES: SEE NOTE 14			
FIELD BOOKS: SEE NOTE 14			
PAGES: SEE NOTE 14			
DATA COLLECTOR FILES:			

BOUNDARY SURVEY OF A PORTION OF
 GOLDEN GATE CANAL
 LYING IN
 NAPLES, COLLIER COUNTY, FLORIDA
 SECTIONS 25 & 26, TWP 49 S, RANGE 25 E
 SECTIONS 26, 27, 28, 29 AND 30, TWP 49 S, RANGE 26 E

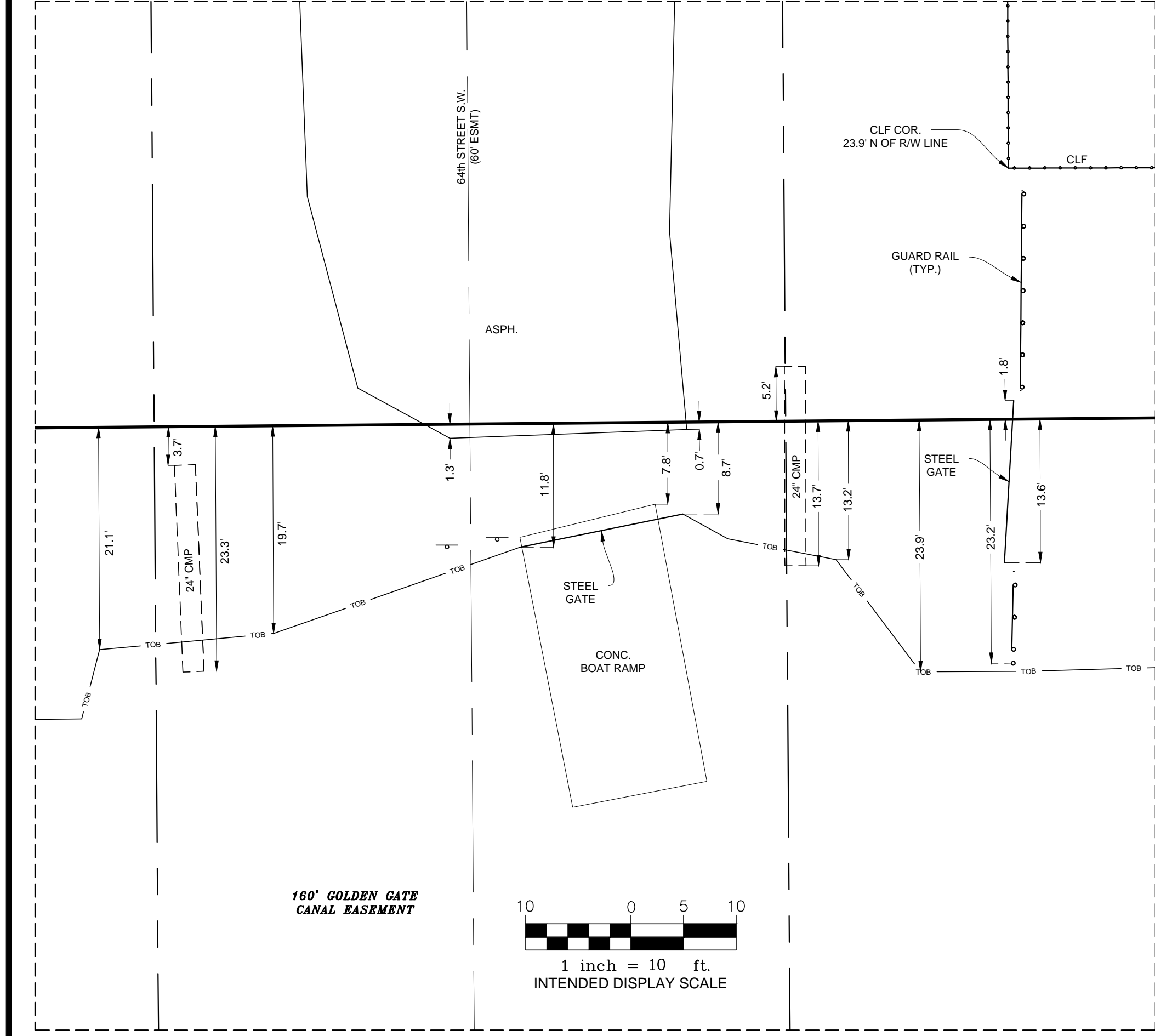
CADD FILE NO. 121001.10 BND
 DRAWING NO. _____
 3 SHEET OF 46



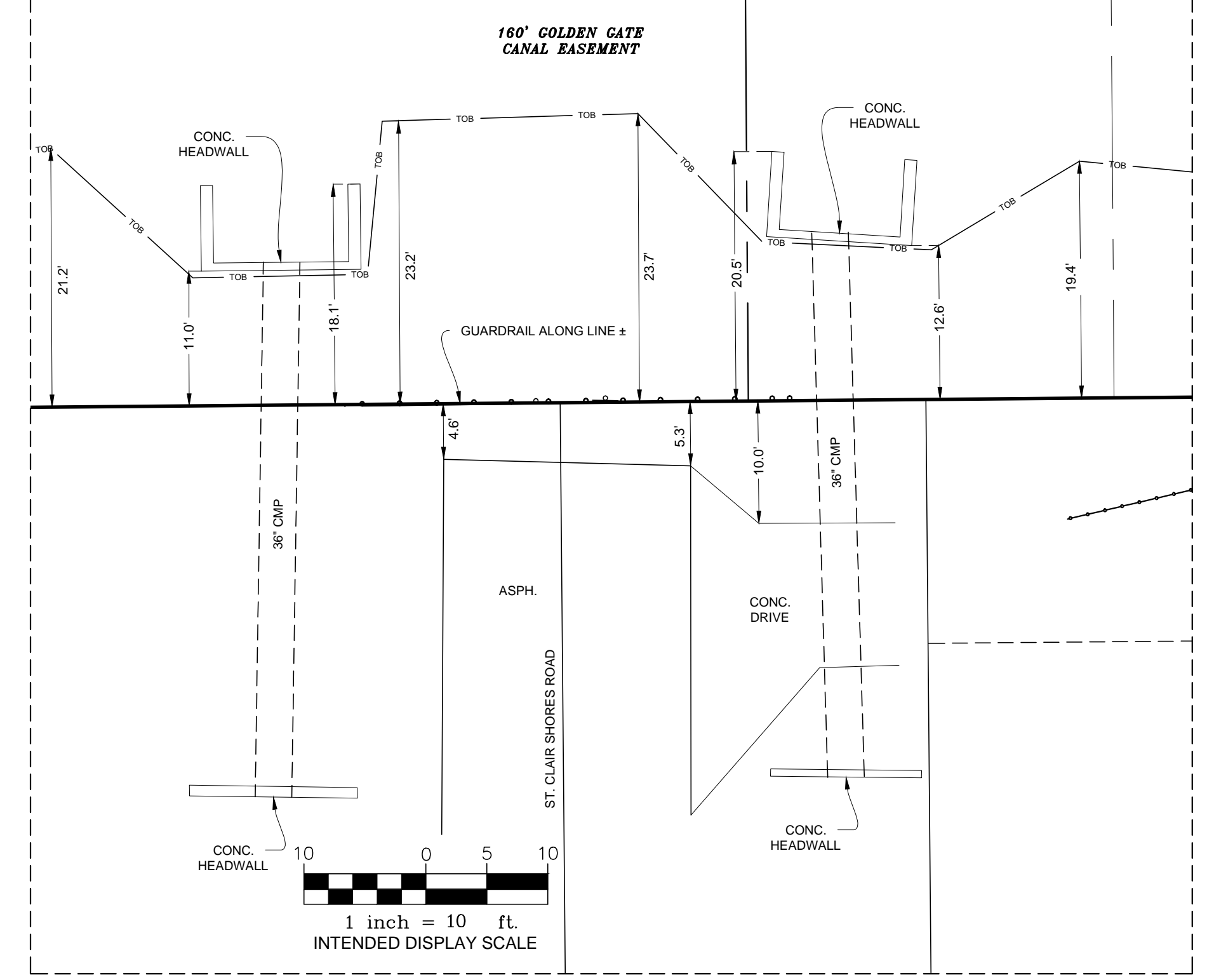
MATCHLINE "H"
SEE SHEET 18 OF 46

MATCHLINE "I"
SEE SHEET 22 OF 46

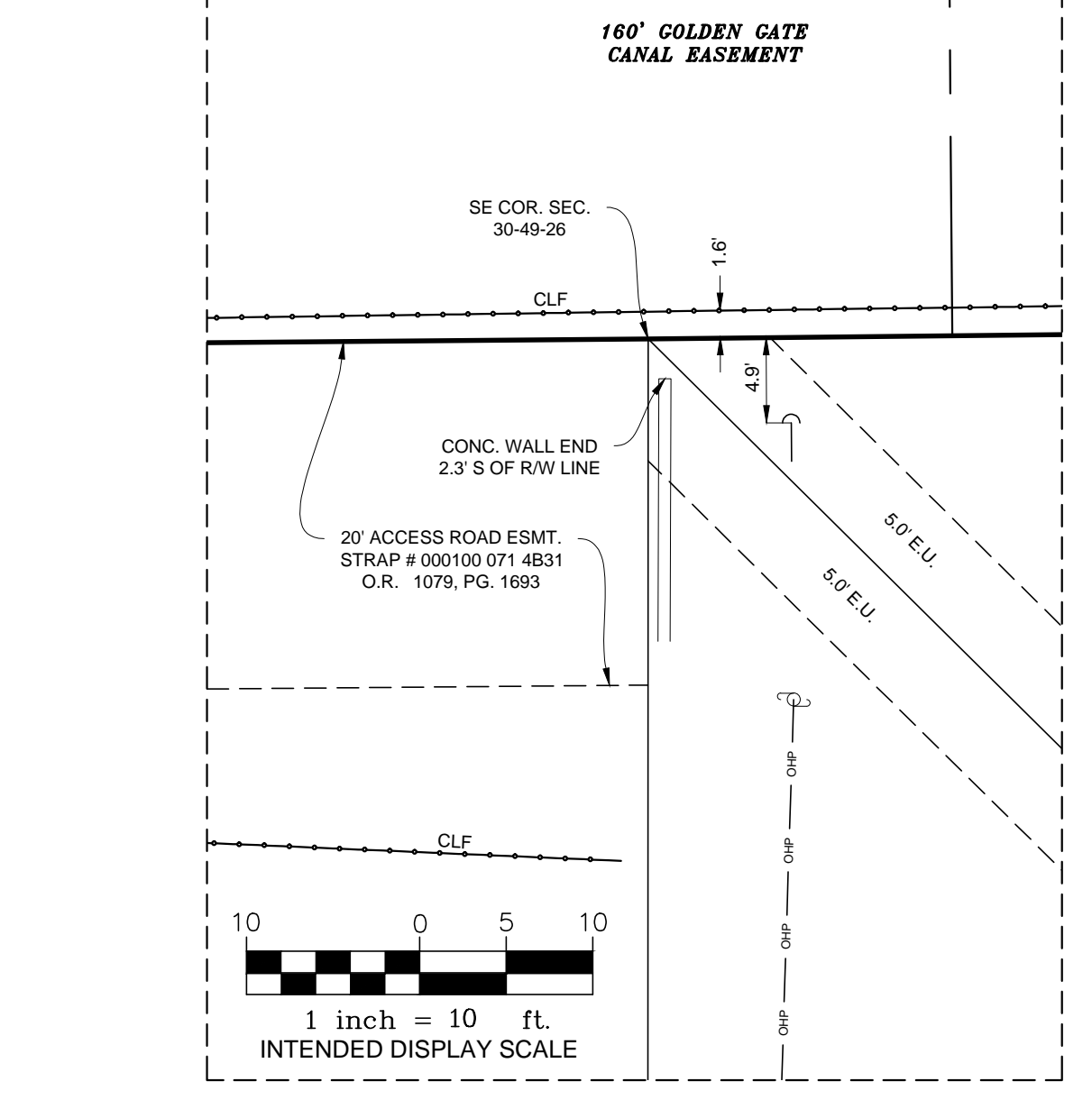
DETAIL "20-A"



DETAIL "20-B"



DETAIL "20-C"



POINT NO.	NORTHING	EASTING	LATITUDE	LONGITUDE	DESCRIPTION
B.P. 566	667499.45'	414011.71'	26° 10' 05.39" N	81° 44' 17.91" W	SET 4" x 4" CM WITH SFWMD ALUM. DISK STAMPED "GGMC R/W 2017 LB 7975" CARSONITE POST SET 1.0' NORTH
B.P. 567	667659.45'	414010.66'	26° 10' 06.97" N	81° 44' 17.93" W	SET 4" x 4" CM WITH SFWMD ALUM. DISK STAMPED "GGMC R/W 2017 LB 7975" CARSONITE POST SET 1.0' SOUTH
B.P. 568	667663.87'	414510.64'	26° 10' 07.05" N	81° 44' 12.44" W	SET 4" x 4" CM WITH SFWMD ALUM. DISK STAMPED "GGMC R/W 2017 LB 7975" CARSONITE POST SET 1.0' SOUTH
B.P. 569	667503.87'	414511.69'	26° 10' 05.46" N	81° 44' 12.42" W	SET 4" x 4" CM WITH SFWMD ALUM. DISK STAMPED "GGMC R/W 2017 LB 7975" CARSONITE POST SET 1.0' NORTH
B.P. 570	667508.30'	415011.68'	26° 10' 05.53" N	81° 44' 06.93" W	SET 4" x 4" CM WITH SFWMD ALUM. DISK STAMPED "GGMC R/W 2017 LB 7975" CARSONITE POST SET 4.0' NORTH
B.P. 571	667668.29'	415010.62'	26° 10' 07.12" N	81° 44' 06.95" W	SET SFWMD ALUM. DISK IN CONCRETE STAMPED "GGMC R/W 2017 LB 7975" CARSONITE POST SET 5.0' SOUTH
B.P. 572	667669.47'	415143.88'	26° 10' 07.14" N	81° 44' 05.49" W	NOT FOUND OR SET FALLS IN DEEP GRAVEL AREA, SEE R.P. 572
R.P. 572	667669.89'	415183.88'	26° 10' 07.14" N	81° 44' 05.05" W	SET MAGNETIC NAIL WITH SFWMD BRASS DISK STAMPED "GGMC R/W 2017 LB 7975" CARSONITE POST NOT SET
B.P. 573	667509.48'	415145.42'	26° 10' 05.55" N	81° 44' 05.46" W	FOUND CM 4" x 4" W/ DISK, SEE SHEET 3 OF XX FOR FULL DESCRIPTION SOUTHEAST SECTION CORNER 30-49-26, CARSONITE POST SET 1.0' NORTH

BOUNDARY DETAIL
SEE SHEET 21 FOR TREE DETAIL

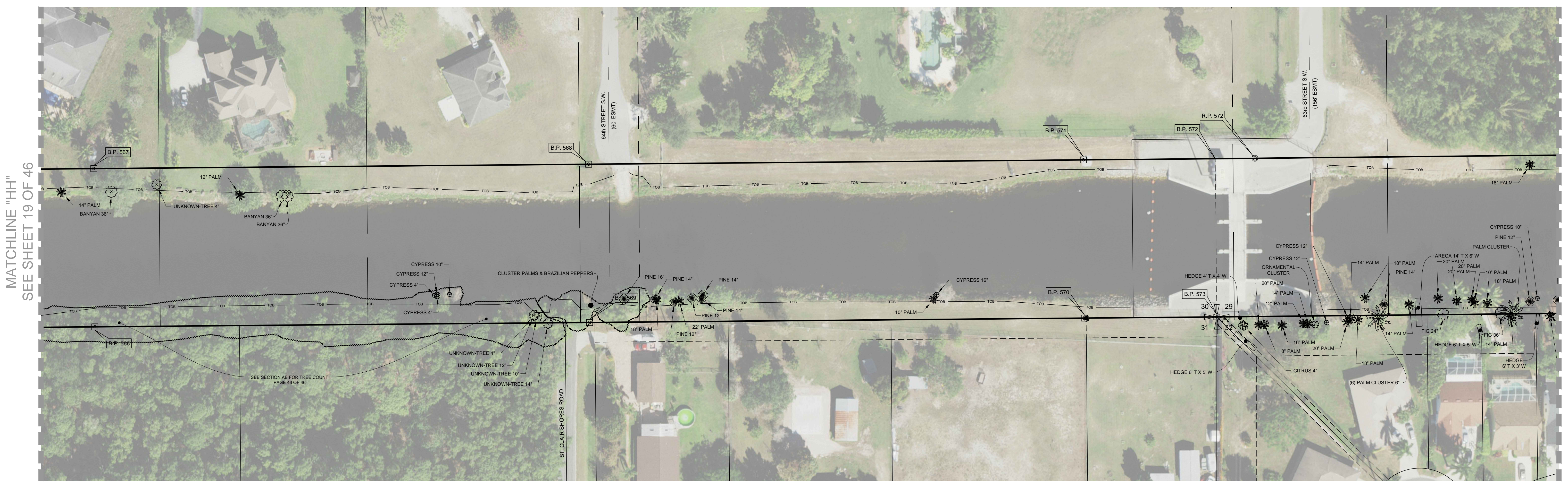
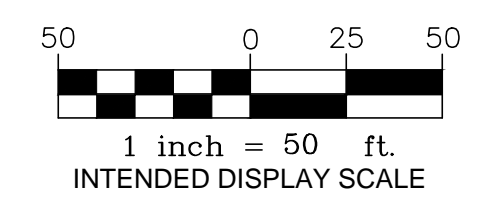


DRAWN: R.J.O. CHECKED: CC. DATE: 7-10-17. SCALE: AS SHOWN. FIELD PERSONS: L.D., J.C., R.E., R.P., G.P., J.R., & J.D. FIELD DATES: SEE NOTE 14. FIELD BOOKS: SEE NOTE 14. PAGES: SEE NOTE 14. DATA COLLECTOR FILES:

BOUNDARY SURVEY OF A PORTION OF GOLDEN GATE CANAL LYING IN NAPLES, COLLIER COUNTY, FLORIDA SECTIONS 25 & 26, TWP 49 S, RANGE 25 E SECTIONS 26, 27, 28, 29 AND 30, TWP 49 S, RANGE 26 E

CADD FILE NO. 121001.10 BND DRAWING NO. 20 OF 46

SOUTH FLORIDA WATER MANAGEMENT DISTRICT
INFRASTRUCTURE MANAGEMENT BUREAU - SURVEY & MAPPING SECTION
3301 GUN CLUB ROAD
WEST PALM BEACH, FLORIDA 33416-4680
J:2012121001.10 GOLDEN GATE CANAL DRAWING 121001.10 BND.DWG 11/20/2017 10:11 AM



MATCHLINE "HH"
SEE SHEET 19 OF 46

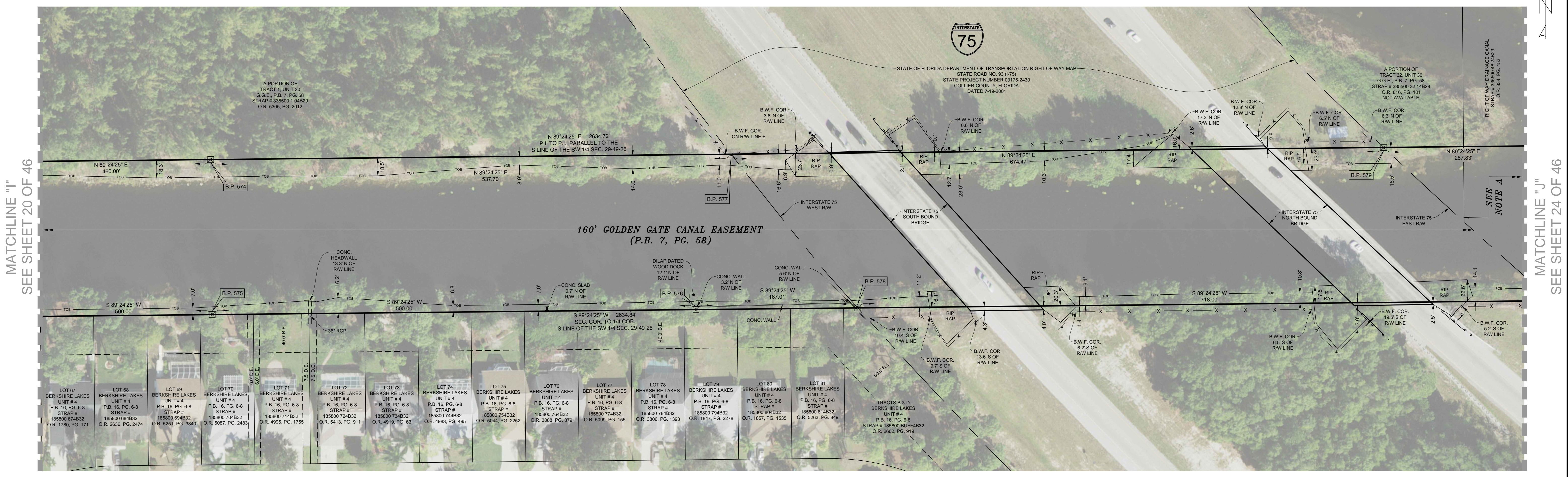
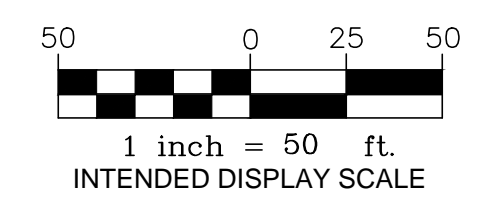
MATCHLINE "II"
SEE SHEET 24 OF 46

<p>SOUTH FLORIDA WATER MANAGEMENT DISTRICT INFRASTRUCTURE MANAGEMENT BUREAU - SURVEY & MAPPING SECTION 3301 GUN CLUB ROAD WEST PALM BEACH, FLORIDA 33416-4680</p>	<table border="1" style="width: 100%; border-collapse: collapse;"> <tr> <td style="width: 30%;">DRAWN: R.J.O.</td> <td style="width: 30%;">CHECKED: CC</td> <td style="width: 30%;">DATE: 7-10-17</td> <td style="width: 10%;">SCALE:</td> </tr> <tr> <td>FIELD PERSON(S) LD., J.C., R.E., B.P., G.P., J.R., & J.D.</td> <td></td> <td></td> <td></td> </tr> <tr> <td>FIELD DATE(S): SEE NOTE 14</td> <td></td> <td></td> <td></td> </tr> <tr> <td>FIELD BOOK(S): SEE NOTE 14</td> <td></td> <td></td> <td></td> </tr> <tr> <td>PAGE(S): SEE NOTE 14</td> <td></td> <td></td> <td></td> </tr> <tr> <td colspan="4">DATA COLLECTOR FILE(S):</td> </tr> </table>	DRAWN: R.J.O.	CHECKED: CC	DATE: 7-10-17	SCALE:	FIELD PERSON(S) LD., J.C., R.E., B.P., G.P., J.R., & J.D.				FIELD DATE(S): SEE NOTE 14				FIELD BOOK(S): SEE NOTE 14				PAGE(S): SEE NOTE 14				DATA COLLECTOR FILE(S):			
DRAWN: R.J.O.	CHECKED: CC	DATE: 7-10-17	SCALE:																						
FIELD PERSON(S) LD., J.C., R.E., B.P., G.P., J.R., & J.D.																									
FIELD DATE(S): SEE NOTE 14																									
FIELD BOOK(S): SEE NOTE 14																									
PAGE(S): SEE NOTE 14																									
DATA COLLECTOR FILE(S):																									
<p>BOUNDARY SURVEY OF A PORTION OF GOLDEN GATE CANAL LYING IN NAPLES, COLLIER COUNTY, FLORIDA SECTIONS 25 & 26, TWP 49 S, RANGE 25 E SECTIONS 26, 27, 28, 29 AND 30, TWP 49 S, RANGE 26 E</p>	<table border="1" style="width: 100%; border-collapse: collapse;"> <tr> <td style="width: 50%;">CADD FILE NO. 121001.10 BND</td> <td style="width: 50%;">DRAWING NO. ---</td> </tr> <tr> <td colspan="2" style="text-align: center;">SHEET 21 OF 46</td> </tr> </table>	CADD FILE NO. 121001.10 BND	DRAWING NO. ---	SHEET 21 OF 46																					
CADD FILE NO. 121001.10 BND	DRAWING NO. ---																								
SHEET 21 OF 46																									

TREE DETAIL
SEE SHEET 20 FOR BOUNDARY DETAIL



J:\2012\121001.10 GOLDEN GATE CANAL\DRAWING\121001.10 BND.DWG 11/20/2017 10:30 AM



MATCHLINE "I"
SEE SHEET 20 OF 46

MATCHLINE "J"
SEE SHEET 24 OF 46

NOTE A: 160' GOLDEN GATE CANAL EASEMENT (P.B. 18, PG. 57)

COORDINATE POINT TABLE					
POINT NO.	NORTHING	EASTING	LATITUDE	LONGITUDE	DESCRIPTION
B.P. 574	667674.65'	415643.86'	26° 10' 07.22" N	81° 44' 00.00" W	SET 4" x 4" CM WITH SFWMD ALUM. DISK STAMPED "GGMC R/W 2017 LB 7975" CARSONITE POST SET 1.0' SOUTH
B.P. 575	667514.65'	415645.39'	26° 10' 05.63" N	81° 43' 59.98" W	SET 4" x 4" CM WITH SFWMD ALUM. DISK STAMPED "GGMC R/W 2017 LB 7975" CARSONITE POST SET 1.0' NORTH
B.P. 576	667519.83'	416145.37'	26° 10' 05.71" N	81° 43' 54.49" W	SET 4" x 4" CM WITH SFWMD ALUM. DISK STAMPED "GGMC R/W 2017 LB 7975" CARSONITE POST SET 1.0' NORTH
B.P. 577	667680.21'	416181.53'	26° 10' 07.30" N	81° 43' 54.10" W	SET 4" x 4" CM WITH SFWMD ALUM. DISK STAMPED "GGMC R/W 2017 LB 7975" CARSONITE POST SET 1.0' SOUTH
B.P. 578	667521.56'	416312.36'	26° 10' 05.74" N	81° 43' 52.66" W	SET 4" x 4" CM WITH SFWMD ALUM. DISK STAMPED "GGMC R/W 2017 LB 7975" CARSONITE POST SET 1.0' NORTH
B.P. 579	667687.19'	416855.97'	26° 10' 07.41" N	81° 43' 46.70" W	SET 4" x 4" CM WITH SFWMD ALUM. DISK STAMPED "GGMC R/W 2017 LB 7975" CARSONITE POST SET 1.0' SOUTH

BOUNDARY SURVEY OF A PORTION OF
GOLDEN GATE CANAL
LYING IN
NAPLES, COLLIER COUNTY, FLORIDA
SECTIONS 25 & 26, TWP 49 S, RANGE 25 E
SECTIONS 26, 27, 28, 29 AND 30, TWP 49 S, RANGE 26 E

BOUNDARY DETAIL
SEE SHEET 23 FOR TREE DETAIL



5670 Zip Drive
Fort Myers, FL 33905
Tel: 239.277.0722
Fax: 239.277.7179

DRAWN: R.J.O. CHECKED: CC. DATE: 7-10-17. SCALE: _____

FIELD PERSON(S) LD., A.C., R.E., R.P., G.P., J.R., & J.D.

FIELD DATE(S): SEE NOTE 14

FIELD BOOK(S): SEE NOTE 14

PAGE(S): SEE NOTE 14

DATA COLLECTOR FILE(S): _____

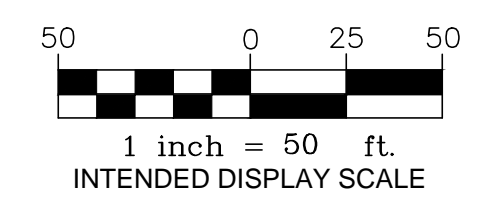
DRAWN: _____ CHECKED: _____ DATE: _____

REVISIONS

SOUTH FLORIDA WATER MANAGEMENT DISTRICT
INFRASTRUCTURE MANAGEMENT BUREAU - SURVEY & MAPPING SECTION
3301 GUN CLUB ROAD
WEST PALM BEACH, FLORIDA 33416-4680

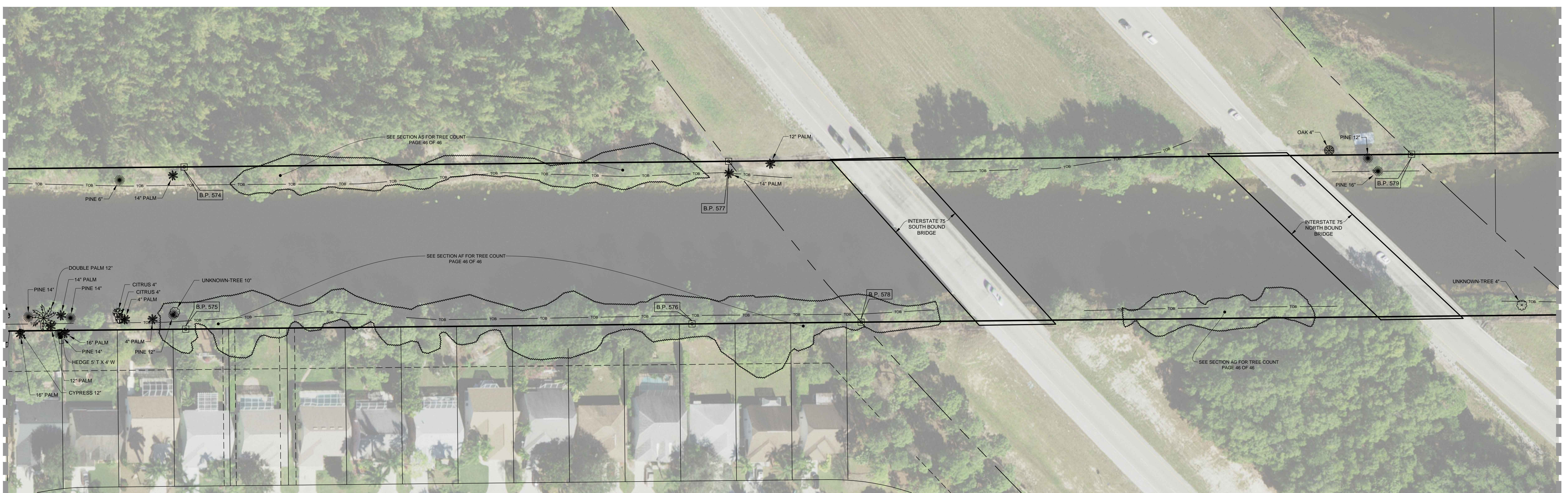
J:\2012\121001.10 GOLDEN GATE CANAL\DRAWING\121001.10 BND.DWG 11/20/2017 10:31 AM

CADD FILE NO. 121001.10 BND
DRAWING NO. _____
22 SHEET OF 46



MATCHLINE "II"
SEE SHEET 21 OF 46

MATCHLINE "JJ"
SEE SHEET 25 OF 46

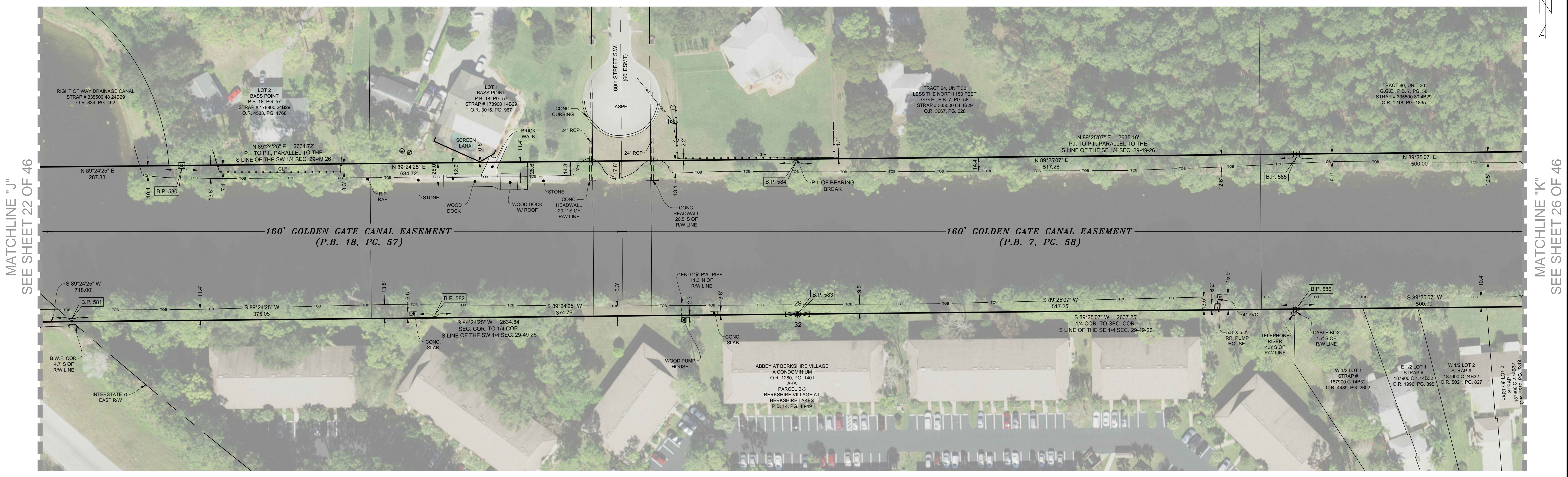
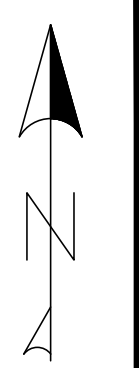
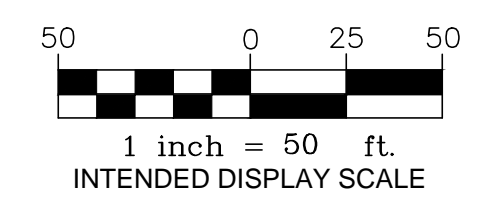


TREE DETAIL
SEE SHEET 22 FOR BOUNDARY DETAIL



<p>SOUTH FLORIDA WATER MANAGEMENT DISTRICT INFRASTRUCTURE MANAGEMENT BUREAU - SURVEY & MAPPING SECTION 3301 GUN CLUB ROAD WEST PALM BEACH, FLORIDA 33416-4680</p>	<table border="1" style="width: 100%; border-collapse: collapse;"> <tr> <td style="width: 30%;">DRAWN: R.J.O.</td> <td style="width: 30%;">CHECKED: CC</td> <td style="width: 30%;">DATE: 7-10-17</td> <td style="width: 10%;">SCALE:</td> </tr> <tr> <td colspan="4">FIELD PERSON(S) L.D., J.C., R.E., R.P., G.P., J.R., & J.D.</td> </tr> <tr> <td colspan="4">FIELD DATE(S): SEE NOTE 14</td> </tr> <tr> <td colspan="4">FIELD BOOK(S): SEE NOTE 14</td> </tr> <tr> <td colspan="4">PAGE(S): SEE NOTE 14</td> </tr> <tr> <td colspan="4">DATA COLLECTOR FILE(S):</td> </tr> </table>	DRAWN: R.J.O.	CHECKED: CC	DATE: 7-10-17	SCALE:	FIELD PERSON(S) L.D., J.C., R.E., R.P., G.P., J.R., & J.D.				FIELD DATE(S): SEE NOTE 14				FIELD BOOK(S): SEE NOTE 14				PAGE(S): SEE NOTE 14				DATA COLLECTOR FILE(S):			
DRAWN: R.J.O.	CHECKED: CC	DATE: 7-10-17	SCALE:																						
FIELD PERSON(S) L.D., J.C., R.E., R.P., G.P., J.R., & J.D.																									
FIELD DATE(S): SEE NOTE 14																									
FIELD BOOK(S): SEE NOTE 14																									
PAGE(S): SEE NOTE 14																									
DATA COLLECTOR FILE(S):																									
<p>BOUNDARY SURVEY OF A PORTION OF GOLDEN GATE CANAL LYING IN NAPLES, COLLIER COUNTY, FLORIDA SECTIONS 25 & 26, TWP 49 S, RANGE 25 E SECTIONS 26, 27, 28, 29 AND 30, TWP 49 S, RANGE 26 E</p>																									
<p>CADD FILE NO. 121001.10 BND DRAWING NO. ---</p>																									
<p>23 SHEET OF 46</p>																									

J:\2012\121001.10 GOLDEN GATE CANAL\DRAWING\121001.10 BND.DWG 11/20/2017 10:32 AM



MATCHLINE "J"
SEE SHEET 22 OF 46

MATCHLINE "K"
SEE SHEET 26 OF 46

COORDINATE POINT TABLE					
POINT NO.	NORTHING	EASTING	LATITUDE	LONGITUDE	DESCRIPTION
B.P. 580	667690.17	417143.78	26° 10' 07.45" N	81° 43' 43.54" W	SET 4" x 4" CM WITH SFWMD ALUM. DISK STAMPED "GGMC R/W 2017 LB 7975" CARSONITE POST SET 13.0' SOUTH
B.P. 581	667528.99	417030.32	26° 10' 05.85" N	81° 43' 44.78" W	SET 4" x 4" CM WITH SFWMD ALUM. DISK STAMPED "GGMC R/W 2017 LB 7975" CARSONITE POST SET 2.0' NORTH
B.P. 582	667532.87	417405.35	26° 10' 05.91" N	81° 43' 40.66" W	SET 4" x 4" CM WITH SFWMD ALUM. DISK STAMPED "GGMC R/W 2017 LB 7975" CARSONITE POST SET 1.0' NORTH
B.P. 583	667536.75	417780.12	26° 10' 05.97" N	81° 43' 36.55" W	FOUND 5/8" IRON ROD AND CAP "WMB&P LB 43", SOUTH 1/4 COR. SEC. 29-49-26 CARSONITE POST SET 1.0' NORTH
B.P. 584	667696.74	417778.46	26° 10' 07.55" N	81° 43' 36.58" W	SET 4" x 4" CM WITH SFWMD ALUM. DISK STAMPED "GGMC R/W 2017 LB 7975" CARSONITE POST SET 1.0' SOUTH
B.P. 585	667701.99	418295.72	26° 10' 07.64" N	81° 43' 30.90" W	SET 4" x 4" CM WITH SFWMD ALUM. DISK STAMPED "GGMC R/W 2017 LB 7975" CARSONITE POST SET 1.0' SOUTH
B.P. 586	667542.00	418297.34	26° 10' 06.05" N	81° 43' 30.87" W	SET 4" x 4" CM WITH SFWMD ALUM. DISK STAMPED "GGMC R/W 2017 LB 7975" CARSONITE POST SET 1.0' NORTH

BOUNDARY DETAIL
SEE SHEET 25 FOR TREE DETAIL



DRAWN: R.J.O. CHECKED: CC. DATE: 7-10-17 SCALE:

FIELD PERSONS: LD., J.C., R.E., R.P., G.P., J.R., & J.D.

FIELD DATES: SEE NOTE 14

FIELD BOOKS: SEE NOTE 14

PAGES: SEE NOTE 14

DATA COLLECTOR FILE(S):

DRAWN: CHECKED: DATE:

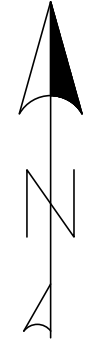
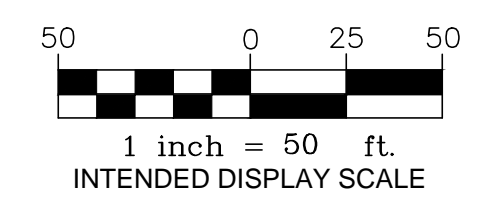
REVISIONS:

BOUNDARY SURVEY OF A PORTION OF
GOLDEN GATE CANAL
LYING IN
NAPLES, COLLIER COUNTY, FLORIDA
SECTIONS 25 & 26, TWP 49 S, RANGE 25 E
SECTIONS 26, 27, 28, 29 AND 30, TWP 49 S, RANGE 26 E

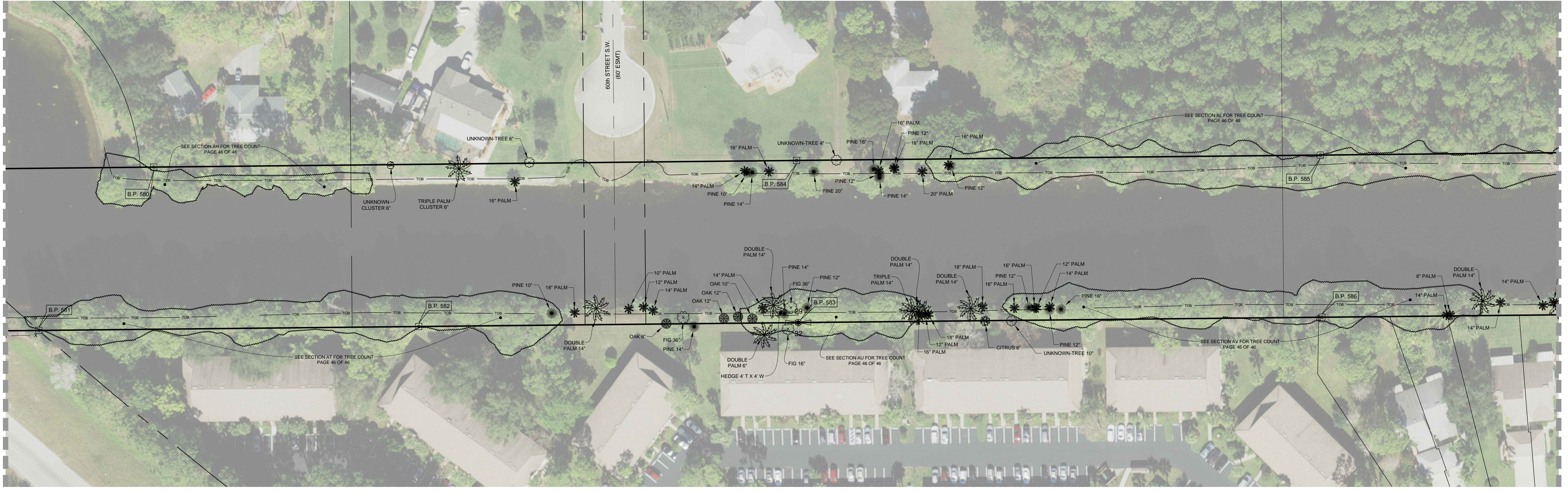
CADD FILE NO.
121001.10 BND
DRAWING NO.
24
SHEET OF 46

SOUTH FLORIDA WATER MANAGEMENT DISTRICT
INFRASTRUCTURE MANAGEMENT BUREAU - SURVEY & MAPPING SECTION
3301 GUN CLUB ROAD,
WEST PALM BEACH, FLORIDA 33416-4680

J:\2012\121001.10 GOLDEN GATE CANAL\DRAWING\121001.10 BND.DWG 11/20/2017 10:33 AM



MATCHLINE "JJ"
SEE SHEET 23 OF 46



MATCHLINE "KK"
SEE SHEET 27 OF 46

SOUTH FLORIDA WATER MANAGEMENT DISTRICT
 INFRASTRUCTURE MANAGEMENT BUREAU - SURVEY & MAPPING SECTION
 3301 GUN CLUB ROAD
 WEST PALM BEACH, FLORIDA 33416-4680

REVISIONS

NO.	DATE	DESCRIPTION

DRAWN: _____ CHECKED: _____ DATE: _____

BOUNDARY SURVEY OF A PORTION OF
 GOLDEN GATE CANAL
 LYING IN
 NAPLES, COLLIER COUNTY, FLORIDA
 SECTIONS 25 & 26, TWP 49 S, RANGE 25 E
 SECTIONS 26, 27, 28, 29 AND 30, TWP 49 S, RANGE 26 E

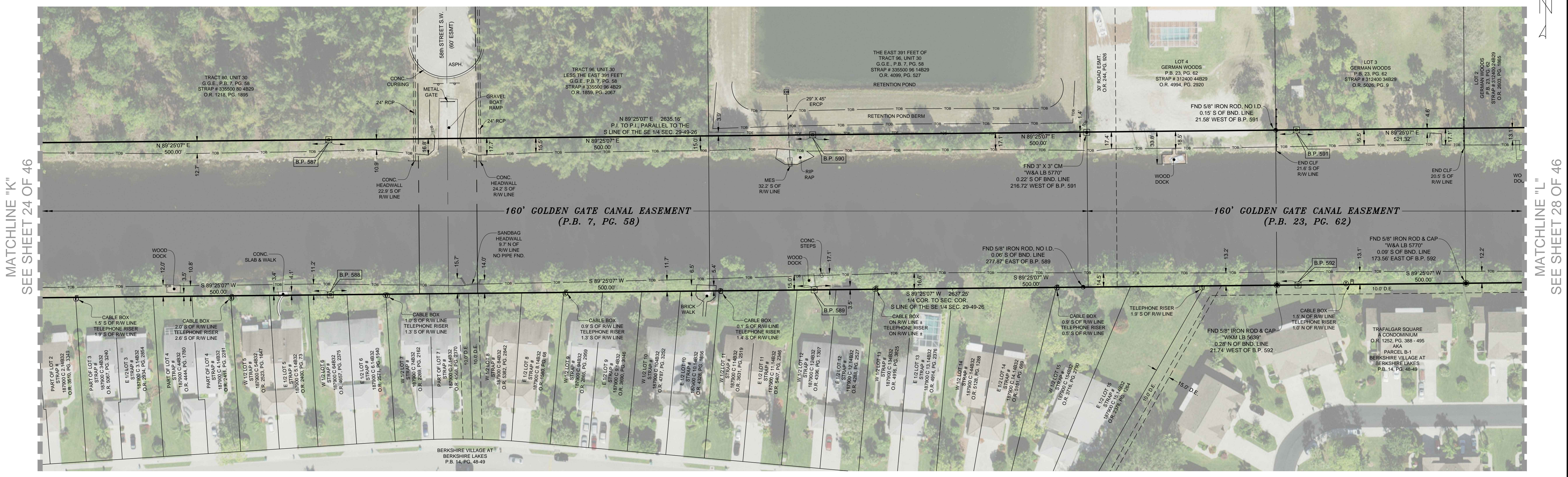
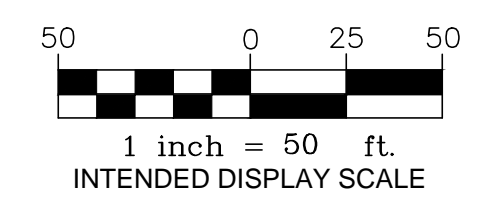
DRAWN: R.J.O. CHECKED: _____ DATE: 7-10-17 SCALE: _____
 FIELD PERSON(S) LD., J.C., R.E., B.P., G.P., J.R., & J.D.
 FIELD DATE(S): SEE NOTE 14
 FIELD BOOK(S): SEE NOTE 14
 PAGE(S): SEE NOTE 14
 DATA COLLECTOR FILE(S): _____

TREE DETAIL
 SEE SHEET 24 FOR BOUNDARY DETAIL



CADD FILE NO.
 121001.10 BND
 DRAWING NO.
 25 SHEET OF 46

J:\2012\121001.10 GOLDEN GATE CANAL\DRAWING\121001.10 BND.DWG 11/20/2017 10:34 AM



MATCHLINE "K"
SEE SHEET 24 OF 46

MATCHLINE "L"
SEE SHEET 28 OF 46

COORDINATE POINT TABLE					
POINT NO.	NORTHING	EASTING	LATITUDE	LONGITUDE	DESCRIPTION
B.P. 587	667707.06'	418795.69'	26° 10' 07.71" N	81° 43' 25.41" W	SET 4" x 4" CM WITH SFWMD ALUM. DISK STAMPED "GGMC R/W 2017 LB 7975" CARSONITE POST SET 1.0' SOUTH
B.P. 588	667547.07'	418797.31'	26° 10' 06.13" N	81° 43' 25.38" W	SET 4" x 4" CM WITH SFWMD ALUM. DISK STAMPED "GGMC R/W 2017 LB 7975" CARSONITE POST SET 1.0' NORTH
B.P. 589	667552.15'	419297.29'	26° 10' 06.21" N	81° 43' 19.90" W	SET 4" x 4" CM WITH SFWMD ALUM. DISK STAMPED "GGMC R/W 2017 LB 7975" CARSONITE POST NOT SET
B.P. 590	667712.14'	419295.66'	26° 10' 07.79" N	81° 43' 19.93" W	SET 4" x 4" CM WITH SFWMD ALUM. DISK STAMPED "GGMC R/W 2017 LB 7975" CARSONITE POST SET 1.0' SOUTH
B.P. 591	667717.21'	419795.64'	26° 10' 07.87" N	81° 43' 14.44" W	SET SELF POURED CM WITH IRON PIPE WITH SFWMD ALUM. DISK STAMPED "GGMC R/W 2017 LB 7975" CARSONITE POST NOT SET
B.P. 592	667557.22'	419797.26'	26° 10' 06.28" N	81° 43' 14.41" W	SET 4" x 4" CM WITH SFWMD ALUM. DISK STAMPED "GGMC R/W 2017 LB 7975" CARSONITE POST SET 1.0' NORTH

BOUNDARY DETAIL
SEE SHEET 27 FOR TREE DETAIL



BOUNDARY SURVEY OF A PORTION OF
GOLDEN GATE CANAL
LYING IN
NAPLES, COLLIER COUNTY, FLORIDA
SECTIONS 25 & 26, TWP 49 S, RANGE 25 E
SECTIONS 26, 27, 28, 29 AND 30, TWP 49 S, RANGE 26 E

NO.	DATE	BY	REVISIONS

DRAWN: R.J.O. CHECKED: CC. DWG. DATE: 7-10-17. SCALE:

FIELD PERSON(S) LD., J.C., R.E., R.P., G.P., J.R., & J.D.

FIELD DATE(S): SEE NOTE 14

FIELD BOOK(S): SEE NOTE 14

PAGE(S): SEE NOTE 14

DATA COLLECTOR FILE(S):

SOUTH FLORIDA WATER MANAGEMENT DISTRICT
INFRASTRUCTURE MANAGEMENT BUREAU - SURVEY & MAPPING SECTION
3301 GUN CLUB ROAD
WEST PALM BEACH, FLORIDA 33416-4680

J:\2012\121001.10 GOLDEN GATE CANAL\DRAWING\121001.10 BND.DWG 11/20/2017 10:35 AM

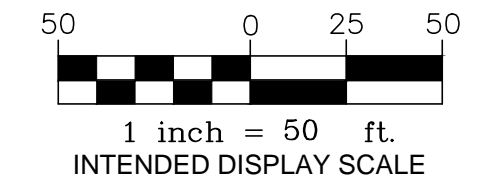
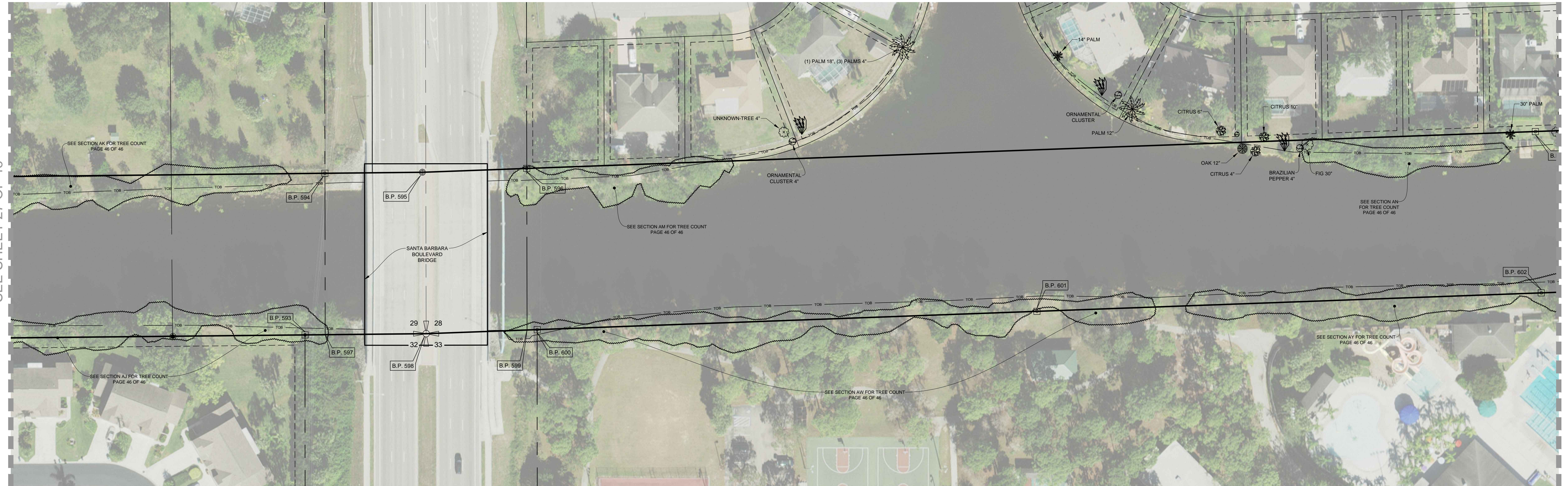
CADD FILE NO.
121001.10 BND

DRAWING NO.

5670 Zip Drive
Fort Myers, FL 33905
Tel: 239.277.0722
Fax: 239.277.7179

26 SHEET OF 46

MATCHLINE "LL"
SEE SHEET 27 OF 46



MATCHLINE "MM"
SEE SHEET 31 OF 46

TREE DETAIL
SEE SHEET 28 FOR BOUNDARY DETAIL



SOUTH FLORIDA WATER MANAGEMENT DISTRICT INFRASTRUCTURE MANAGEMENT BUREAU - SURVEY & MAPPING SECTION 3301 GUN CLUB ROAD WEST PALM BEACH, FLORIDA 33416-4680		DRAWN / CHECKED / DATE / REVISIONS
BOUNDARY SURVEY OF A PORTION OF GOLDEN GATE CANAL LYING IN NAPLES, COLLIER COUNTY, FLORIDA SECTIONS 25 & 26, TWP 49 S, RANGE 25 E SECTIONS 26, 27, 28, 29 AND 30, TWP 49 S, RANGE 26 E		CADD FILE NO. 121001.10 BND DRAWING NO. 29 OF 46
DRAWN: R.J.O. CHECKED: CC DATE: 7-10-17 SCALE:	FIELD PERSON(S) L.D., J.C., R.E., B.P., G.P., J.R., & J.D. FIELD DATE(S): SEE NOTE 14 FIELD BOOK(S): SEE NOTE 14 PAGE(S): SEE NOTE 14 DATA COLLECTOR FILE(S):	J:\2012\121001.10 GOLDEN GATE CANAL\DRAWING\121001.10 BND.DWG 11/20/2017 10:38 AM