



BIG CYPRESS BASIN
SOUTH FLORIDA WATER MANAGEMENT DISTRICT

2660 Horseshoe Drive N, Suite 101, Naples, FL 34104
(239) 263-7615 • Fax (239) 263-8166 • www.sfwmd.gov/bcb/

February 19, 2019

Subject: Golden Gate Canal Tree Removal Project – Phase 2 2nd Notice

Dear Resident,

The South Florida Water Management District (District) is a regional governmental agency that oversees the water resources in the southern half of the state. Our mission is to manage and protect the water resources of the region by balancing and improving flood control, water quality, natural systems and water supply.

As part of our flood control mission, beginning on March 4, 2019 the District and Texas Aquatic Harvesting will be removing trees within the drainage easement along the Golden Gate Main canal from the Golden Gate #2 Structure (GG2) to I75 North Bound Underpass (see enclosed map). As part of this project, all trees within the drainage easement will be removed. The District will require the removal of unpermitted fences, small sheds, pergolas, gazebos, lighting and/or other improvements situated within the easement. While the District will endeavor to minimize damage to any permitted structures, it is advisable that prior to commencement of the project, all such improvements be removed or safeguarded. In addition, any improvements (i.e., fences, sheds, docks, etc.) within the canal, on the canal bank or within the easement will require a Right of Way Occupancy Permit. Information on District Occupancy permits can be found on the District's website: www.sfwmd.gov.

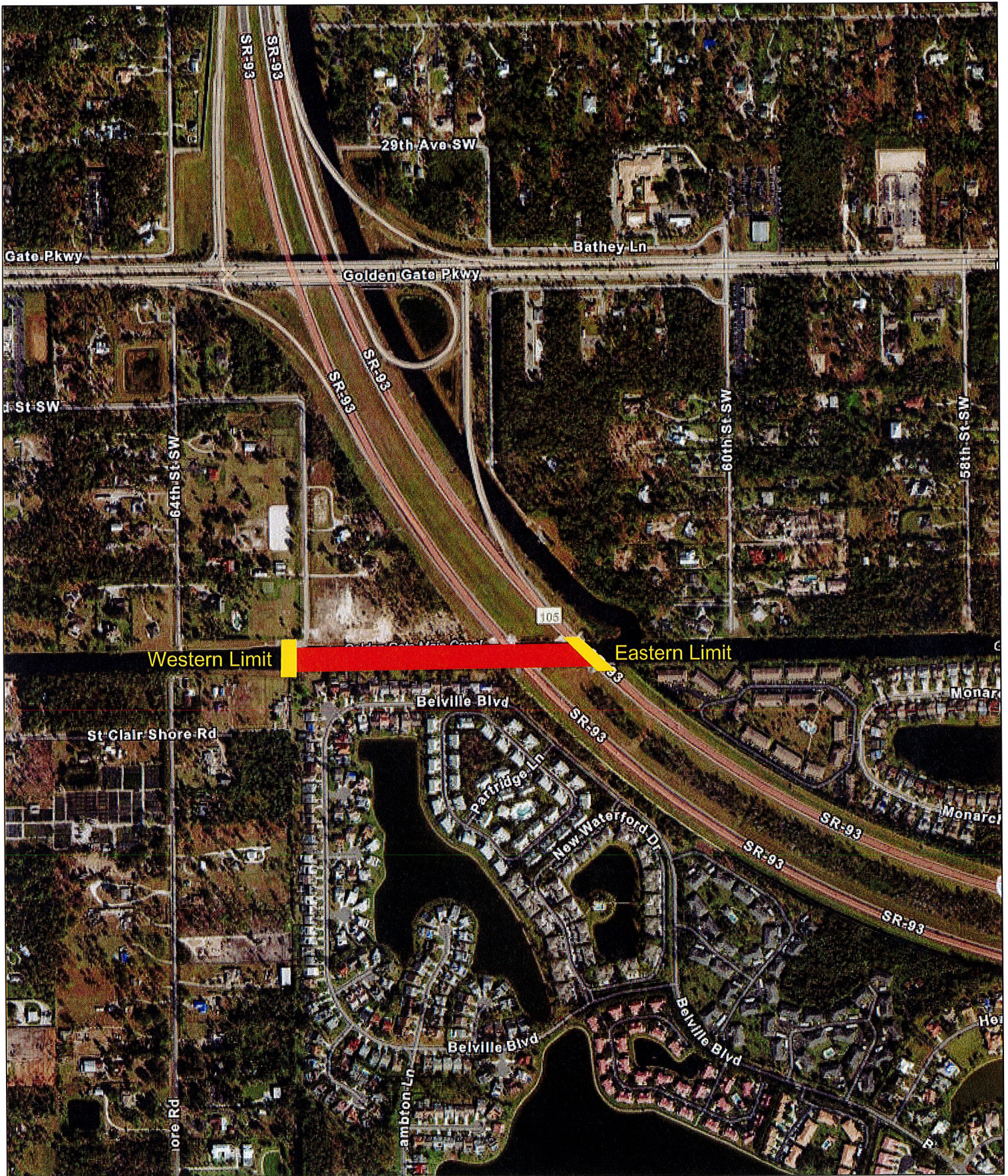
Tree removal will include stump grinding and sodding of disturbed areas, where necessary. Vegetation will also be removed from the canal banks and the areas treated with herbicide to prevent re-emergence. These activities are part of the District's normal cycle of maintenance of its rights-of-way to ensure that canals function optimally during a storm or hurricane event.

District staff will continue to update residents impacted by the project until all work is complete. A website is available for residents to access details and updates to the status of the project at www.sfwmd.gov/GoldenGateCanal. We anticipate tree removal work will be completed by the end of March 2019. Your cooperation will be greatly appreciated during this time. If you have any questions or concerns, please feel free to contact Big Cypress Basin Field Station Field OPS & Maintenance Supervisor Johnathan Askew at 348-7530 ext. 7813, email jaskew@sfwmd.gov.

Sincerely,

Lisa Koehler
Basin Administrator

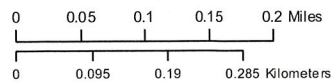
Encl.



Golden Gate Main Phase 2 Project Location



South Florida Water Management District
 3301 Gun Club Road, West Palm Beach, Florida 33406
 561-686-8800; www.sfwmd.gov



DISCLAIMER
 This map is a conceptual or planning tool only. The South Florida Water Management District does not guarantee or make any representation regarding the information contained herein. It is not self-executing or binding, and does not affect the interests of any persons or properties, including any present or future right or use of real property.