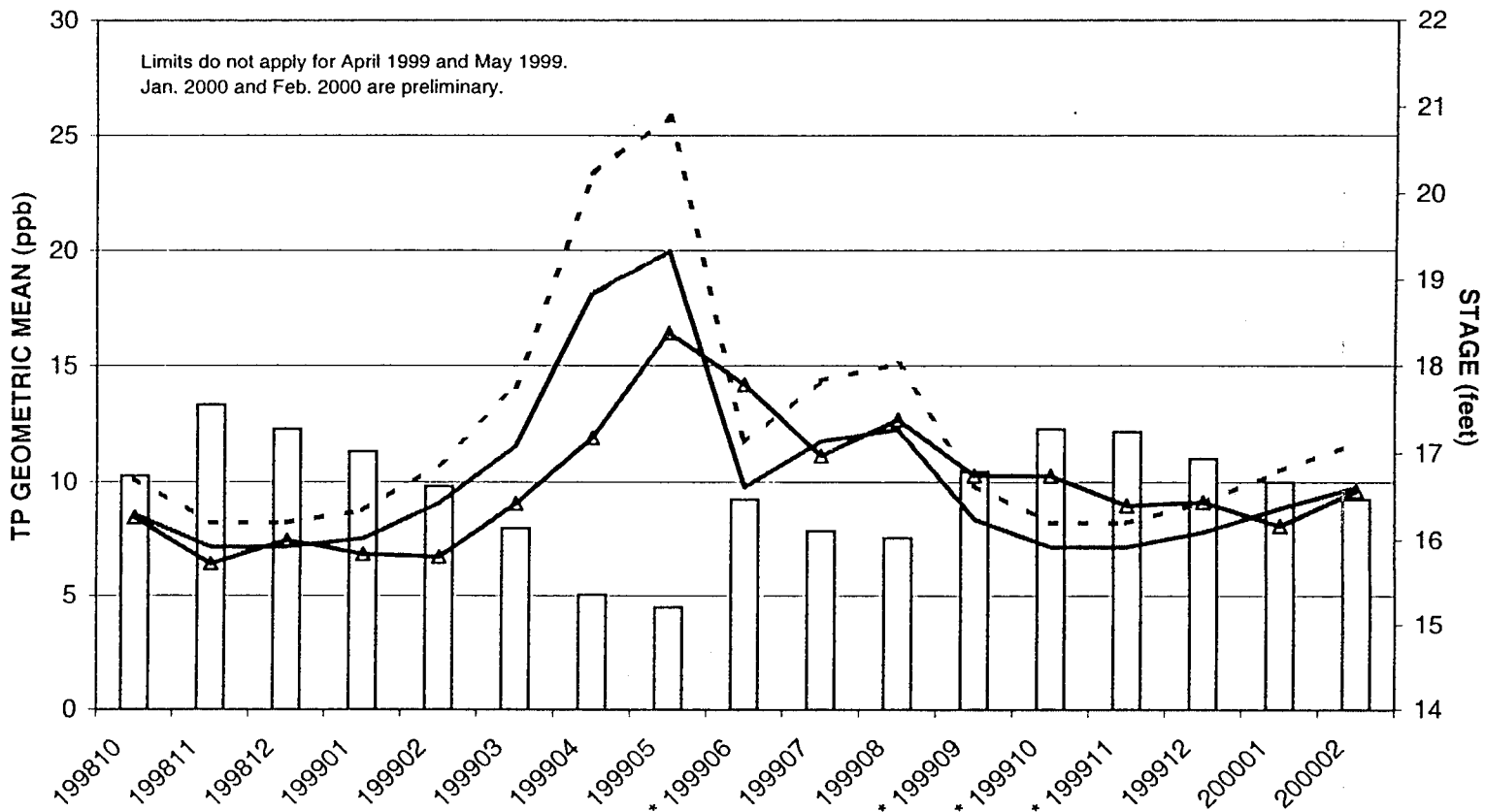


Figure 1. LNWR Monthly TP Concentrations and Limits

□ average stage

 geometric mean
 - - - interim limit
 — long term limit



Asterisk indicates interim limit was exceeded.

48a

2A

b7

	LOX3	LOX4	LOX5	LOX6	LOX7	LOX8	LOX9	LOX10	LOX11	LOX12	LOX13	LOX14	LOX15	LOX16
1/4/1999	0.014	0.01	0.009	0.006	0.005	0.005	0.01	0.009						
1/5/1999									0.005	0.006	0.006	0.005	0.005	0.007
2/16/1999			0.007	0.007	0.006	0.009	0.006							
2/17/1999									0.007	0.006	0.007	0.006	0.007	0.007
3/15/1999				0.01	0.011	0.011								
3/16/1999									0.011	0.007	0.008	0.007	0.008	0.01
4/12/1999							0.014							
4/13/1999										0.011			0.011	
5/10/1999										0.018			0.015	
6/21/1999		0.046	0.011	0.016	0.009	0.017	0.015	0.016						
6/22/1999									0.011	0.013	0.015	0.014	0.009	0.012
7/19/1999			0.012	0.01	0.016	0.012	0.012							
7/20/1999									0.012	0.009		0.011	0.01	0.009
8/16/1999				0.011	0.013	0.016								
8/17/1999									0.015	0.011		0.012	0.01	0.015
9/27/1999	0.01	0.012	0.009	0.01	0.013	0.011	0.008	0.007						
9/28/1999									0.014	0.009	0.01	0.017	0.009	0.009
10/12/1999	0.01	0.014	0.009	0.011	0.011	0.009	0.009	0.007						
10/13/1999									0.015	0.014	0.011	0.009	0.009	0.009
11/15/1999	0.013	0.008	0.011	0.006	0.007	0.009	0.012	0.006						
11/16/1999									0.014	0.007	0.013	0.007	0.009	0.009
12/6/1999	0.011	0.011	0.012	0.009	0.009	0.013	0.011	0.008						
12/7/1999									0.01	0.007	0.009	0.006	0.008	0.007
1/3/2000	0.01	0.008	0.012	0.008	0.008	0.008	0.008	0.008						
1/4/2000									0.009	0.006	0.011	0.006	0.007	0.007
2/14/2000		0.01	0.023	0.007	0.009	0.012	0.011	0.011						
2/15/2000									0.013	0.006	0.011	0.007	0.006	0.008

Table 1. Individual Total Phosphorus Concentrations (mg/L) Collected in LNWR from Jan. 1999 through Feb. 2000.

Geometric Mean TP and Daily Ponding in the Refuge

58

