

MATCHLINE "AA"
SEE SHEET 7 OF 46

SOUTH FLORIDA WATER MANAGEMENT DISTRICT
INFRASTRUCTURE MANAGEMENT BUREAU - SURVEY & MAPPING SECTION
3301 GUN CLUB ROAD
WEST PALM BEACH, FLORIDA 33416-4680

DATE: 11/20/2017 9:51 AM

NO.	DATE	BY	CHECKED	DATE	REVISIONS

DRAWN: R.J.O.	CHECKED: CC	DATE: 7-10-17	SCALE:
FIELD PERSON(S): E.D., J.C., R.E., B.P., G.P., J.R., & J.D.			
FIELD DATE(S): SEE NOTE 14			
FIELD BOOK(S): SEE NOTE 14			
PAGE(S): SEE NOTE 14			
DATA COLLECTOR FILE(S):			

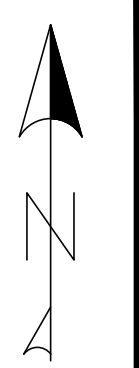
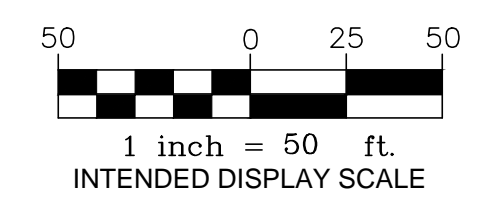
BOUNDARY SURVEY OF A PORTION OF
GOLDEN GATE CANAL
LYING IN
NAPLES, COLLIER COUNTY, FLORIDA
SECTIONS 25 & 26, TWP 49 S, RANGE 25 E
SECTIONS 26, 27, 28, 29 AND 30, TWP 49 S, RANGE 26 E

CADD FILE NO.
121001.10 BND
DRAWING NO.
5 SHEET
OF 46

TREE DETAIL
SEE SHEET 4 FOR BOUNDARY DETAIL



5670 Zip Drive
Fort Myers, FL 33905
Tel: 239.277.0722
Fax: 239.277.7179



MATCHLINE "A"
SEE SHEET 4 OF 46

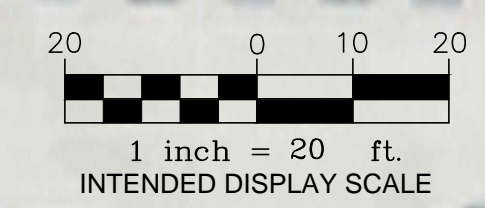
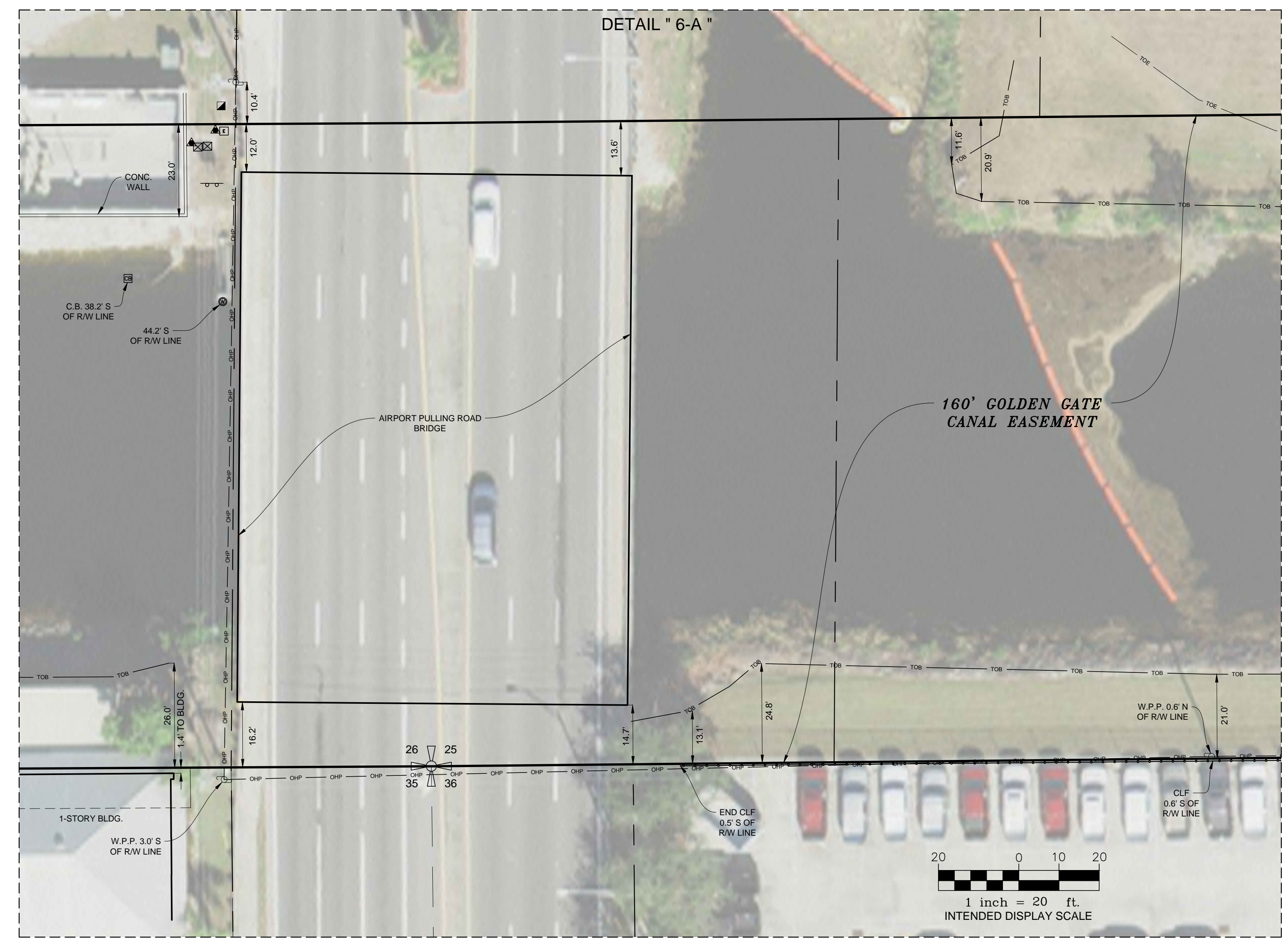
MATCHLINE "B"
SEE SHEET 8 OF 46



**160' GOLDEN GATE CANAL EASEMENT
(GRANT OF EASEMENT O.R. 121, PG. 172-178)**

COCONUT RIVER UNIT NO. 1, P.B. 3, PG. 58

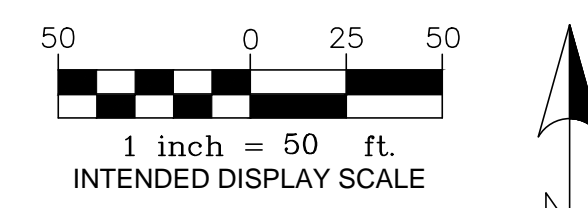
COORDINATE POINT TABLE					
POINT NO.	NORTHING	EASTING	LATITUDE	LONGITUDE	DESCRIPTION
B.P. 506	667395.96'	403454.18'	26° 10' 03.76" N	81° 46' 13.77" W	SET 4" x 4" CM WITH SFWMD ALUM. DISK STAMPED "GGMC R/W 2017 LB 7975" CARSONITE POST NOT SET
B.P. 507	667555.96'	403453.30'	26° 10' 05.34" N	81° 46' 13.79" W	SET SFWMD ALUM. DISK IN PAVEMENT STAMPED "GGMC R/W 2017 LB 7975" CARSONITE POST SET 3.0' SOUTH
B.P. 508	667558.71'	403953.29'	26° 10' 05.40" N	81° 46' 08.30" W	SET SFWMD ALUM. DISK IN PAVEMENT STAMPED "GGMC R/W 2017 LB 7975" CARSONITE POST SET 5.0' SOUTH
B.P. 509	667398.72'	403954.18'	26° 10' 03.81" N	81° 46' 08.28" W	SET 4" x 4" CM WITH SFWMD ALUM. DISK STAMPED "GGMC R/W 2017 LB 7975" CARSONITE POST SET 1.0' NORTH
B.P. 510	667400.93'	404356.17'	26° 10' 03.86" N	81° 46' 03.87" W	SET MAGNETIC NAIL WITH SFWMD BRASS DISK STAMPED "GGMC R/W 2017 LB 7975" CARSONITE POST NOT SET
B.P. 511	667560.92'	404353.28'	26° 10' 05.44" N	81° 46' 03.91" W	SET MAGNETIC NAIL WITH SFWMD BRASS DISK STAMPED "GGMC R/W 2017 LB 7975" CARSONITE POST SET 4.0' SOUTH
B.P. 512	667401.93'	404536.03'	26° 10' 03.88" N	81° 46' 01.90" W	FOUND 5/8" IRON ROD AND CAP "W&A LB 5770" CARSONITE POST SET 1.0' NORTH
B.P. 513	667402.20'	404585.83'	26° 10' 03.89" N	81° 46' 01.35" W	SET MAGNETIC NAIL WITH SFWMD BRASS DISK STAMPED "GGMC R/W 2017 LB 7975", SOUTHEAST SECTION CORNER 26-49-25
B.P. 514	667402.69'	404636.04'	26° 10' 03.89" N	81° 46' 00.80" W	NOT FOUND OR SET, SEE R.P. 514
R.P. 514	667401.69'	404636.03'	26° 10' 03.88" N	81° 46' 00.80" W	FOUND 6" x 6" CM W/ IRON ROD, NO I.D., 1.00' SOUTH OF B.P. 514
B.P. 515	667403.18'	404686.04'	26° 10' 03.90" N	81° 46' 00.25" W	FOUND 5/8" IRON ROD AND CAP "WMB&P LB 43" CARSONITE POST SET 1.0' NORTH
B.P. 516	667561.93'	404537.20'	26° 10' 05.47" N	81° 46' 01.90" W	FOUND 4" x 4" CM WITH ALUM. DISK "LS TCF 854" 0.22' N & 0.18' E
B.P. 517	667562.20'	404584.60'	26° 10' 05.47" N	81° 46' 01.37" W	SET MAGNETIC NAIL WITH SFWMD BRASS DISK STAMPED "GGMC R/W 2017 LB 7975" CARSONITE POST NOT SET
B.P. 518	667563.20'	404687.22'	26° 10' 05.49" N	81° 46' 00.25" W	NOT FOUND OR SET, FALLS IN CANAL / WATER
B.P. 519	667563.69'	404737.22'	26° 10' 05.49" N	81° 45' 59.70" W	SET POURED IN PLACE CM WITH SFWMD ALUM. DISK STAMPED "GGMC R/W 2017 LB 7975" CARSONITE POST SET 1.0' SOUTH
B.P. 520	667565.37'	404908.20'	26° 10' 05.52" N	81° 45' 57.82" W	SET 4" x 4" CM WITH SFWMD ALUM. DISK STAMPED "GGMC R/W 2017 LB 7975" CARSONITE POST SET 1.0' SOUTH
B.P. 521	667405.38'	404909.77'	26° 10' 03.94" N	81° 45' 57.80" W	SET 4" x 4" CM WITH SFWMD ALUM. DISK STAMPED "GGMC R/W 2017 LB 7975" CARSONITE POST SET 1.0' NORTH



**BOUNDARY DETAIL
SEE SHEET 7 FOR TREE DETAIL**

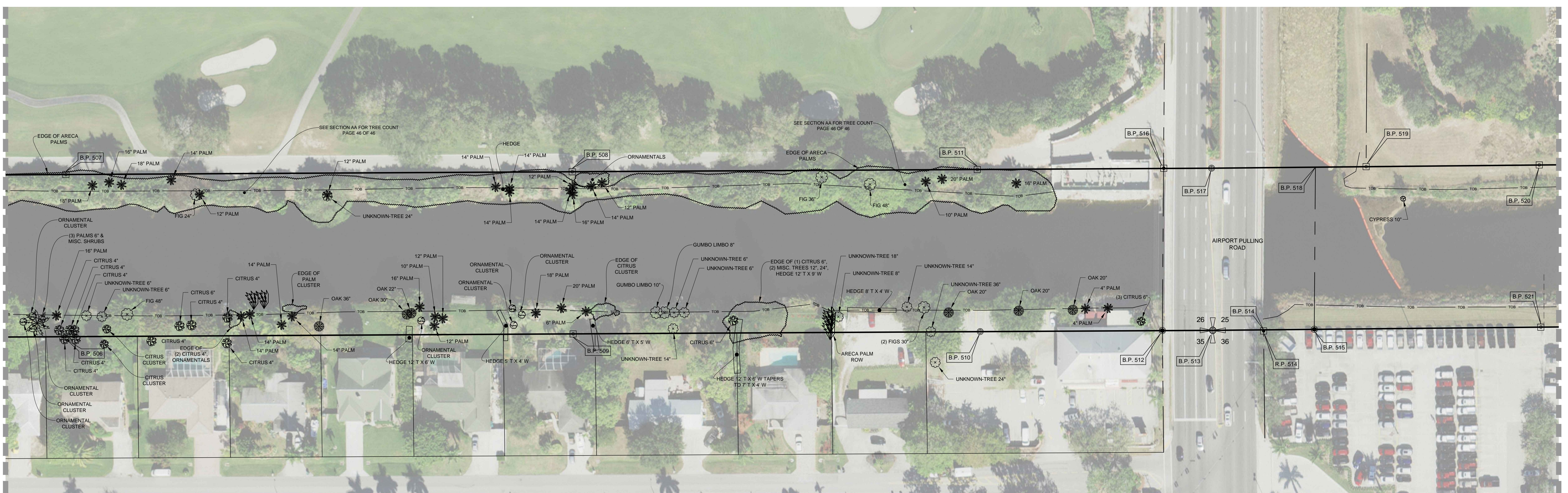


SOUTH FLORIDA WATER MANAGEMENT DISTRICT
 INFRASTRUCTURE MANAGEMENT BUREAU - SURVEY & MAPPING SECTION
 3301 GUN CLUB ROAD
 WEST PALM BEACH, FLORIDA 33416-4680
 DRAWN: _____ CHECKED: _____ DATE: _____
 FIELD PERSON(S) LD., A.C., R.E., R.P., G.P., J.R., & J.D.
 FIELD DATE(S): SEE NOTE 14
 FIELD BOOK(S): SEE NOTE 14
 PAGE(S): SEE NOTE 14
 DATA COLLECTOR FILE(S): _____
 BOUNDARY SURVEY OF A PORTION OF
 GOLDEN GATE CANAL
 LYING IN
 NAPLES, COLLIER COUNTY, FLORIDA
 SECTIONS 25 & 26, TWP 49 S, RANGE 25 E
 SECTIONS 26, 27, 28, 29 AND 30, TWP 49 S, RANGE 26 E
 CADD FILE NO. 121001.10 BND
 DRAWING NO. _____
6 SHEET OF **46**
 J:\2017\121001.10 GOLDEN GATE CANAL\DRAWING\121001.10 BND.DWG 11/20/2017 9:53 AM



MATCHLINE "AA"
SEE SHEET 5 OF 46

MATCHLINE "BB"
SEE SHEET 9 OF 46



SOUTH FLORIDA WATER MANAGEMENT DISTRICT
 INFRASTRUCTURE MANAGEMENT BUREAU - SURVEY & MAPPING SECTION
 3301 GUN CLUB ROAD
 WEST PALM BEACH, FLORIDA 33416-4680

DRAWN: R.J.O.	CHECKED: CC	DATE: 7-10-17	SCALE:
FIELD PERSON(S): LD., J.C., R.E., R.P., G.P., J.R., & J.D.			
FIELD DATE(S): SEE NOTE 14			
FIELD BOOK(S): SEE NOTE 14			
PAGE(S): SEE NOTE 14			
DATA COLLECTOR FILE(S):			

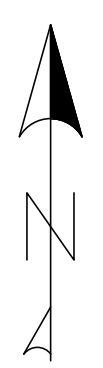
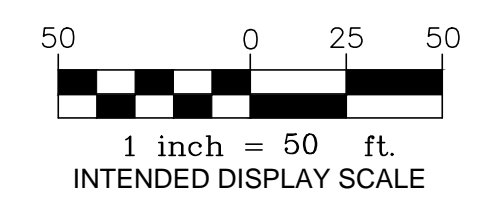
BOUNDARY SURVEY OF A PORTION OF
 GOLDEN GATE CANAL
 LYING IN
 NAPLES, COLLIER COUNTY, FLORIDA
 SECTIONS 25 & 26, TWP 49 S, RANGE 25 E
 SECTIONS 26, 27, 28, 29 AND 30, TWP 49 S, RANGE 26 E

CADD FILE NO.
 121001.10 BND
 DRAWING NO.
 7 OF 46

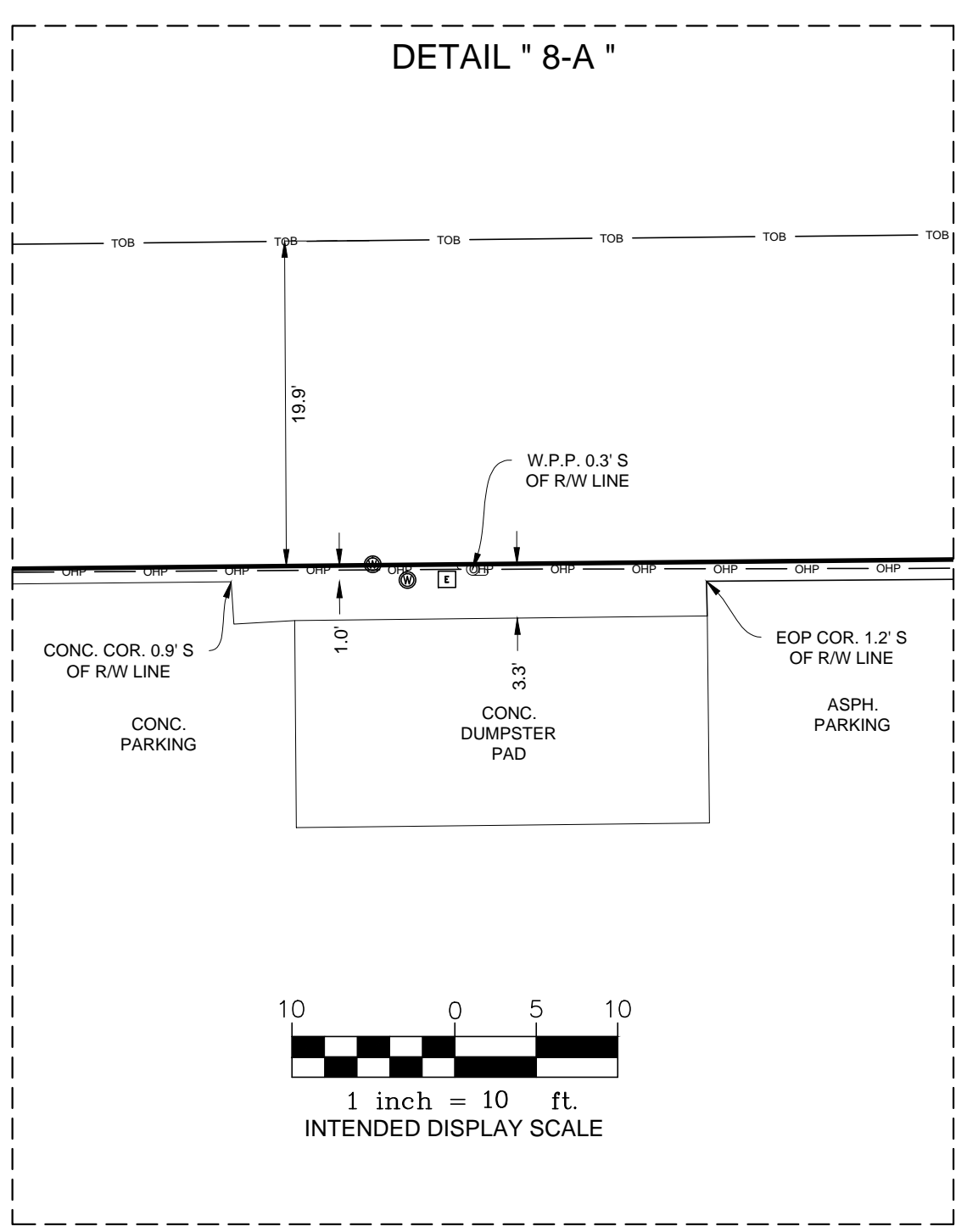
TREE DETAIL
 SEE SHEET 6 FOR BOUNDARY DETAIL



J:\2017\121001.10 GOLDEN GATE CANAL\DRAWING\121001.10 BND.DWG 11/20/2017 9:54 AM



COORDINATE POINT TABLE					
POINT NO.	NORTHING	EASTING	LATITUDE	LONGITUDE	DESCRIPTION
B.P. 520	667565.37	404908.20	26° 10' 05.52" N	81° 45' 57.82" W	SET 4" x 4" CM WITH SFWMD ALUM. DISK STAMPED "GGMC R/W 2017 LB 7975" CARSONITE POST SET 1.0' SOUTH
B.P. 521	667405.38	404909.77	26° 10' 03.94" N	81° 45' 57.80" W	SET 4" x 4" CM WITH SFWMD ALUM. DISK STAMPED "GGMC R/W 2017 LB 7975" CARSONITE POST SET 1.0' NORTH
B.P. 522	667410.29	405409.75	26° 10' 04.01" N	81° 45' 52.31" W	SET 4" x 4" CM WITH SFWMD ALUM. DISK STAMPED "GGMC R/W 2017 LB 7975" CARSONITE POST SET 1.0' NORTH
B.P. 523	667570.28	405408.18	26° 10' 05.60" N	81° 45' 52.34" W	SET 4" x 4" CM WITH SFWMD ALUM. DISK STAMPED "GGMC R/W 2017 LB 7975" CARSONITE POST SET 0.5' SOUTH
B.P. 524	667575.22	405911.83	26° 10' 05.68" N	81° 45' 46.81" W	FOUND 5/8" IRON ROD AND CAP "W.M.B.P. LB 43" CARSONITE POST SET 1.0' SOUTH
B.P. 525	667415.20	405910.09	26° 10' 04.09" N	81° 45' 46.82" W	FOUND 5/8" IRON ROD AND CAP, ILLEGIBLE CARSONITE POST SET 1.0' NORTH
B.P. 526	667578.36	406231.84	26° 10' 05.73" N	81° 45' 43.30" W	SET 4" x 4" CM WITH SFWMD ALUM. DISK STAMPED "GGMC R/W 2017 LB 7975" CARSONITE POST SET 1.0' SOUTH
B.P. 527	667418.37	406233.41	26° 10' 04.14" N	81° 45' 43.27" W	SET 4" x 4" CM WITH SFWMD ALUM. DISK STAMPED "GGMC R/W 2017 LB 7975" CARSONITE POST SET 8.0' NORTH



BOUNDARY DETAIL
SEE SHEET 9 FOR TREE DETAIL



SOUTH FLORIDA WATER MANAGEMENT DISTRICT
 INFRASTRUCTURE MANAGEMENT BUREAU - SURVEY & MAPPING SECTION
 3301 GUN CLUB ROAD,
 WEST PALM BEACH, FLORIDA 33416-4680

NO.	DATE	BY	CHECKED	DATE

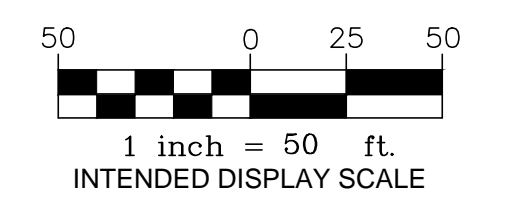
DRAWN: R.J.O. CHECKED: CC. DATE: 7-10-17 SCALE: 1"=50'
 FIELD PERSONS: LD., J.C., R.E., B.P., G.P., J.R., & J.D.
 FIELD DATES: SEE NOTE 14
 FIELD BOOKS: SEE NOTE 14
 PAGES: SEE NOTE 14
 DATA COLLECTOR FILE(S):

BOUNDARY SURVEY OF A PORTION OF
 GOLDEN GATE CANAL
 LYING IN
 NAPLES, COLLIER COUNTY, FLORIDA
 SECTIONS 25 & 26, TWP 49 S, RANGE 25 E
 SECTIONS 26, 27, 28, 29 AND 30, TWP 49 S, RANGE 26 E

CADD FILE NO. 121001.10 BND
 DRAWING NO. 8
 SHEET OF 46

J:\2012\121001.10 GOLDEN GATE CANAL\DRAWING\121001.10 BND.DWG 11/20/2017 9:55 AM

MATCHLINE "BB"
SEE SHEET 7 OF 46

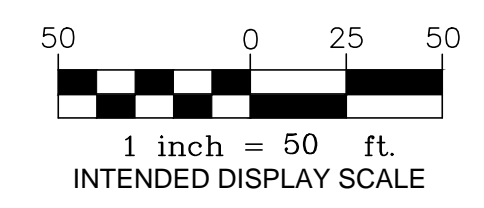


MATCHLINE "CC"
SEE SHEET 11 OF 46

TREE DETAIL
SEE SHEET 8 FOR BOUNDARY DETAIL



DRAWN: R.J.O. CHECKED: CC DWG. DATE: 7-10-17 SCALE: FIELD PERSONS: L.D., J.C., R.E., B.P., G.P., J.R., & J.D. FIELD DATES: SEE NOTE 14 FIELD BOOKS: SEE NOTE 14 PAGES: SEE NOTE 14 DATA COLLECTOR FILE(S):	SOUTH FLORIDA WATER MANAGEMENT DISTRICT INFRASTRUCTURE MANAGEMENT BUREAU - SURVEY & MAPPING SECTION 3301 GUN CLUB ROAD WEST PALM BEACH, FLORIDA 33416-4680		J:\2012\121001.10 GOLDEN GATE CANAL\DRAWING\121001.10 BND.DWG 11/20/2017 9:59 AM
	BOUNDARY SURVEY OF A PORTION OF GOLDEN GATE CANAL LYING IN NAPLES, COLLIER COUNTY, FLORIDA SECTIONS 25 & 26, TWP 49 S, RANGE 25 E SECTIONS 26, 27, 28, 29 AND 30, TWP 49 S, RANGE 26 E	CADD FILE NO. 121001.10 BND DRAWING NO. ---	
	9 SHEET OF 46	REVISIONS DATE CHECKED DRAWN	



MATCHLINE "C"
SEE SHEET 8 OF 46

MATCHLINE "D"
SEE SHEET 12 OF 46



COORDINATE POINT TABLE					
POINT NO.	NORTHING	EASTING	LATITUDE	LONGITUDE	DESCRIPTION
B.P. 528	667583.27	406731.82	26° 10' 05.80" N	81° 45' 37.81" W	SET 4" x 4" CM WITH SFWMD ALUM. DISK STAMPED "GGMC R/W 2017 LB 7975" CARSONITE POST SET 0.5' SOUTH
B.P. 529	667423.27	406733.39	26° 10' 04.22" N	81° 45' 37.78" W	SET 4" x 4" CM WITH SFWMD ALUM. DISK STAMPED "GGMC R/W 2017 LB 7975" CARSONITE POST SET 1.0' NORTH
B.P. 530	667428.18	407233.36	26° 10' 04.30" N	81° 45' 32.30" W	FOUND 5/8" IRON ROD AND CAP "WMB&P LB 43", SOUTH 1/4 COR. SEC. 25-49-25 CARSONITE POST SET 1.0' NORTH
B.P. 531	667588.17	407231.35	26° 10' 05.88" N	81° 45' 32.33" W	FOUND 5/8" IRON ROD AND CAP "W.M.B.P. LB 43" CARSONITE POST SET 1.0' SOUTH
B.P. 532	667591.48	407447.32	26° 10' 05.93" N	81° 45' 29.96" W	SET 4" x 4" CM WITH SFWMD ALUM. DISK STAMPED "GGMC R/W 2017 LB 7975" CARSONITE POST SET 1.0' SOUTH
B.P. 533	667431.50	407449.78	26° 10' 04.34" N	81° 45' 29.92" W	SET 4" x 4" CM WITH SFWMD ALUM. DISK STAMPED "GGMC R/W 2017 LB 7975" CARSONITE POST SET 1.0' NORTH

BOUNDARY DETAIL
SEE SHEET 11 FOR TREE DETAIL



5670 Zip Drive
Fort Myers, FL 33905
Tel: 239.277.0722
Fax: 239.277.7179

DRAWN: R.J.O. CHECKED: CC. DWG. DATE: 7-10-17. SCALE:

FIELD PERSON(S) L.D., J.C., R.E., R.P., G.P., J.R., & J.D.

FIELD DATE(S): SEE NOTE 14

FIELD BOOK(S): SEE NOTE 14

PAGE(S): SEE NOTE 14

DATA COLLECTOR FILE(S):

DRAWN: []

CHECKED: []

DATE: []

REVISIONS:

BOUNDARY SURVEY OF A PORTION OF
GOLDEN GATE CANAL
LYING IN
NAPLES, COLLIER COUNTY, FLORIDA
SECTIONS 25 & 26, TWP 49 S, RANGE 25 E
SECTIONS 26, 27, 28, 29 AND 30, TWP 49 S, RANGE 26 E

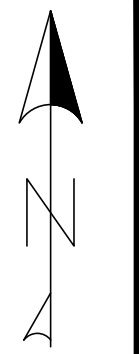
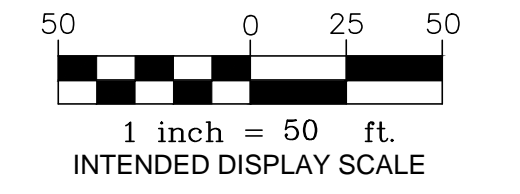
CADD FILE NO.
121001.10 BND

DRAWING NO.

SOUTH FLORIDA WATER MANAGEMENT DISTRICT
INFRASTRUCTURE MANAGEMENT BUREAU - SURVEY & MAPPING SECTION
3301 GUN CLUB ROAD,
WEST PALM BEACH, FLORIDA 33416-4680

J:\2017\121001.10 GOLDEN GATE CANAL\DRAWING\121001.10 BND.DWG 11/20/2017 10:00 AM

MATCHLINE "CC"
SEE SHEET 9 OF 46



MATCHLINE "DD"
SEE SHEET 13 OF 46

SOUTH FLORIDA WATER MANAGEMENT DISTRICT
 INFRASTRUCTURE MANAGEMENT BUREAU - SURVEY & MAPPING SECTION
 3301 GUN CLUB ROAD
 WEST PALM BEACH, FLORIDA 33416-4680

REVISIONS

NO.	DATE	DESCRIPTION

DRAWN: _____ CHECKED: _____ DATE: _____
 FIELD PERSON(S): _____ L.D., A.C., R.E., S.P., G.P., J.R., & J.D.
 FIELD DATE(S): SEE NOTE 14
 FIELD BOOK(S): SEE NOTE 14
 PAGE(S): SEE NOTE 14
 DATA COLLECTOR FILE(S): _____

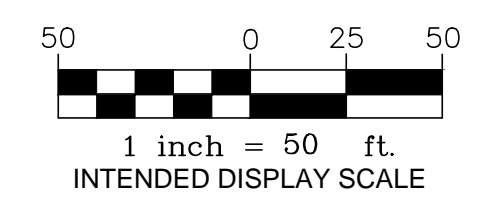
BOUNDARY SURVEY OF A PORTION OF
 GOLDEN GATE CANAL
 LYING IN
 NAPLES, COLLIER COUNTY, FLORIDA
 SECTIONS 25 & 26, TWP 49 S, RANGE 25 E
 SECTIONS 26, 27, 28, 29 AND 30, TWP 49 S, RANGE 26 E

CADD FILE NO.
 121001.10 BND
 DRAWING NO.
 11 SHEET OF 46

TREE DETAIL
 SEE SHEET 10 FOR BOUNDARY DETAIL



J:\2012\121001.10 GOLDEN GATE CANAL\DRAWING\121001.10 BND.DWG 11/20/2017 10:01 AM



COORDINATE POINT TABLE					
POINT NO.	NORTHING	EASTING	LATITUDE	LONGITUDE	DESCRIPTION
B.P. 534	667439.18'	407949.72'	26° 10' 04.45" N	81° 45' 24.43" W	SET 4" x 4" CM WITH SFWMD ALUM. DISK STAMPED "GGMC R/W 2017 LB 7975" CARSONITE POST SET 1.0' NORTH
B.P. 535	667599.16'	407947.26'	26° 10' 06.03" N	81° 45' 24.47" W	SET 4" x 4" CM WITH SFWMD ALUM. DISK STAMPED "GGMC R/W 2017 LB 7975" CARSONITE POST SET 1.0' SOUTH
B.P. 536	667606.83'	408447.20'	26° 10' 06.14" N	81° 45' 18.98" W	SET 4" x 4" CM WITH SFWMD ALUM. DISK STAMPED "GGMC R/W 2017 LB 7975" CARSONITE POST SET 1.0' SOUTH
B.P. 537	667446.85'	408449.75'	26° 10' 04.55" N	81° 45' 18.95" W	FOUND 5/8" IRON ROD AND CAP "WLE 3465" CARSONITE POST SET 1.0' NORTH
B.P. 538	667453.05'	408853.54'	26° 10' 04.64" N	81° 45' 14.52" W	SET 4" x 4" CM WITH SFWMD ALUM. DISK STAMPED "GGMC R/W 2017 LB 7975" CARSONITE POST SET 1.0' NORTH
B.P. 539	667613.03'	408851.09'	26° 10' 06.22" N	81° 45' 14.55" W	SET SELF POURED CM WITH IRON PIPE WITH SFWMD ALUM. DISK STAMPED "GGMC R/W 2017 LB 7975" CARSONITE POST SET 11.0' SOUTH
B.P. 540	667620.71'	409351.03'	26° 10' 06.33" N	81° 45' 09.07" W	SET 4" x 4" CM WITH SFWMD ALUM. DISK STAMPED "GGMC R/W 2017 LB 7975" CARSONITE POST SET 10.0' SOUTH
B.P. 541	667461.03'	409368.69'	26° 10' 04.75" N	81° 45' 08.86" W	FOUND 5/8" IRON ROD AND CAP "LB WMB&P 43" CARSONITE POST SET 12.0' NORTH

BOUNDARY SURVEY OF A PORTION OF
GOLDEN GATE CANAL
LYING IN
NAPLES, COLLIER COUNTY, FLORIDA
SECTIONS 25 & 26, TWP 49 S, RANGE 25 E
SECTIONS 26, 27, 28, 29 AND 30, TWP 49 S, RANGE 26 E

BOUNDARY DETAIL
SEE SHEET 13 FOR TREE DETAIL

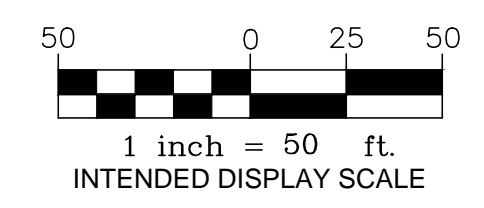


CADD FILE NO.
121001.10 BND
DRAWING NO.

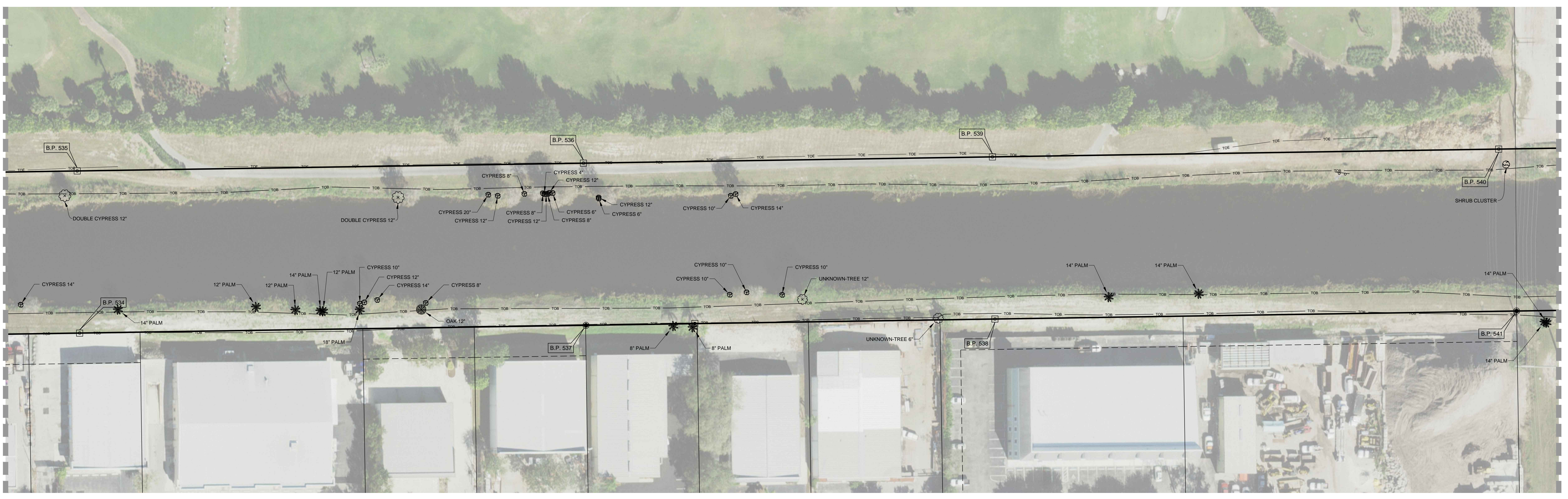
12 SHEET
OF 46

SOUTH FLORIDA WATER MANAGEMENT DISTRICT
 INFRASTRUCTURE MANAGEMENT BUREAU - SURVEY & MAPPING SECTION
 3301 GUN CLUB ROAD
 WEST PALM BEACH, FLORIDA 33416-4680
 J:\2012\121001.10 GOLDEN GATE CANAL\DRAWING\121001.10 BND.DWG 11/20/2017 10:02 AM

REVISIONS	DATE	CHECKED	DRAWN



MATCHLINE "DD"
SEE SHEET 11 OF 46



MATCHLINE "EE"
SEE SHEET 15 OF XX

SOUTH FLORIDA WATER MANAGEMENT DISTRICT
INFRASTRUCTURE MANAGEMENT BUREAU - SURVEY & MAPPING SECTION

3301 GUN CLUB ROAD
WEST PALM BEACH, FLORIDA 33416-4680

NO.	DATE	BY	REVISIONS

DRAWN: _____ CHECKED: _____ DATE: _____
FIELD PERSON(S): _____ L.D., J.C., R.E., B.P., G.P., J.R., & J.D.
FIELD DATE(S): SEE NOTE 14
FIELD BOOK(S): SEE NOTE 14
PAGE(S): SEE NOTE 14
DATA COLLECTOR FILE(S): _____

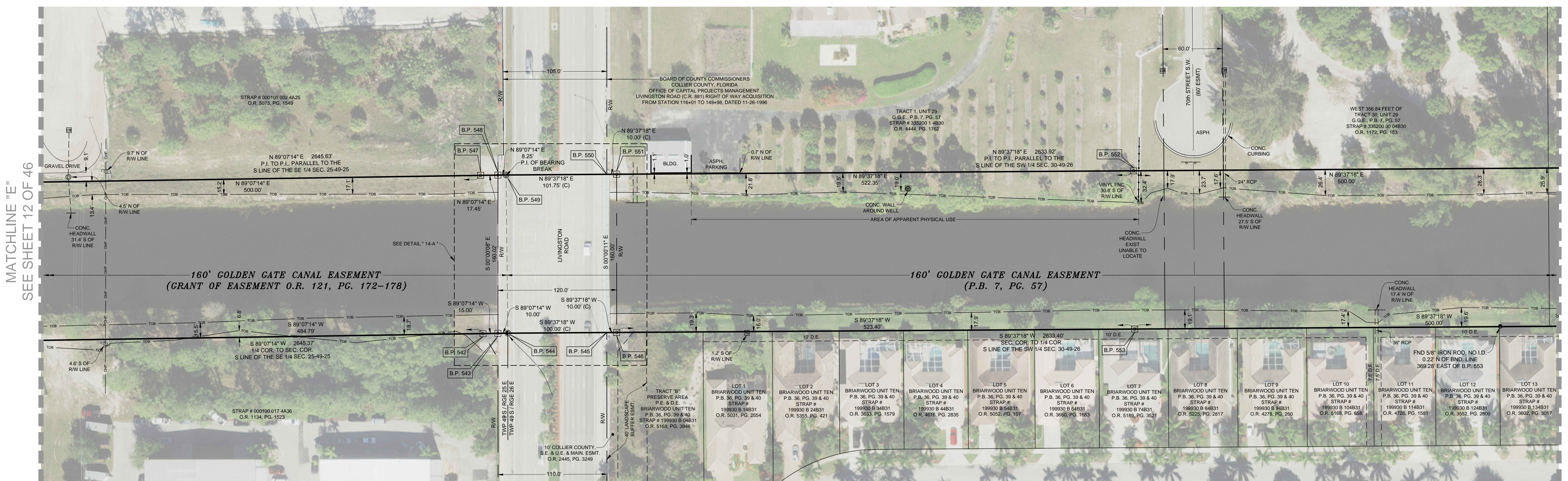
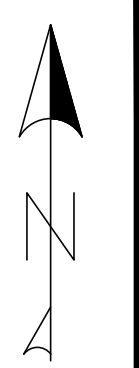
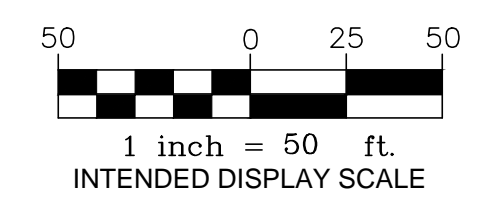
BOUNDARY SURVEY OF A PORTION OF
GOLDEN GATE CANAL
LYING IN
NAPLES, COLLIER COUNTY, FLORIDA
SECTIONS 25 & 26, TWP 49 S, RANGE 25 E
SECTIONS 26, 27, 28, 29 AND 30, TWP 49 S, RANGE 26 E

CADD FILE NO.
121001.10 BND
DRAWING NO.
13 SHEET OF 46

TREE DETAIL
SEE SHEET 4 FOR BOUNDARY DETAIL



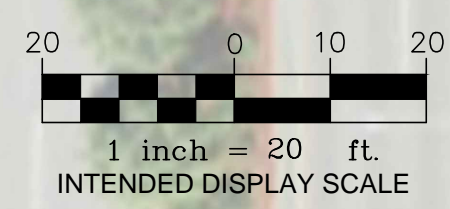
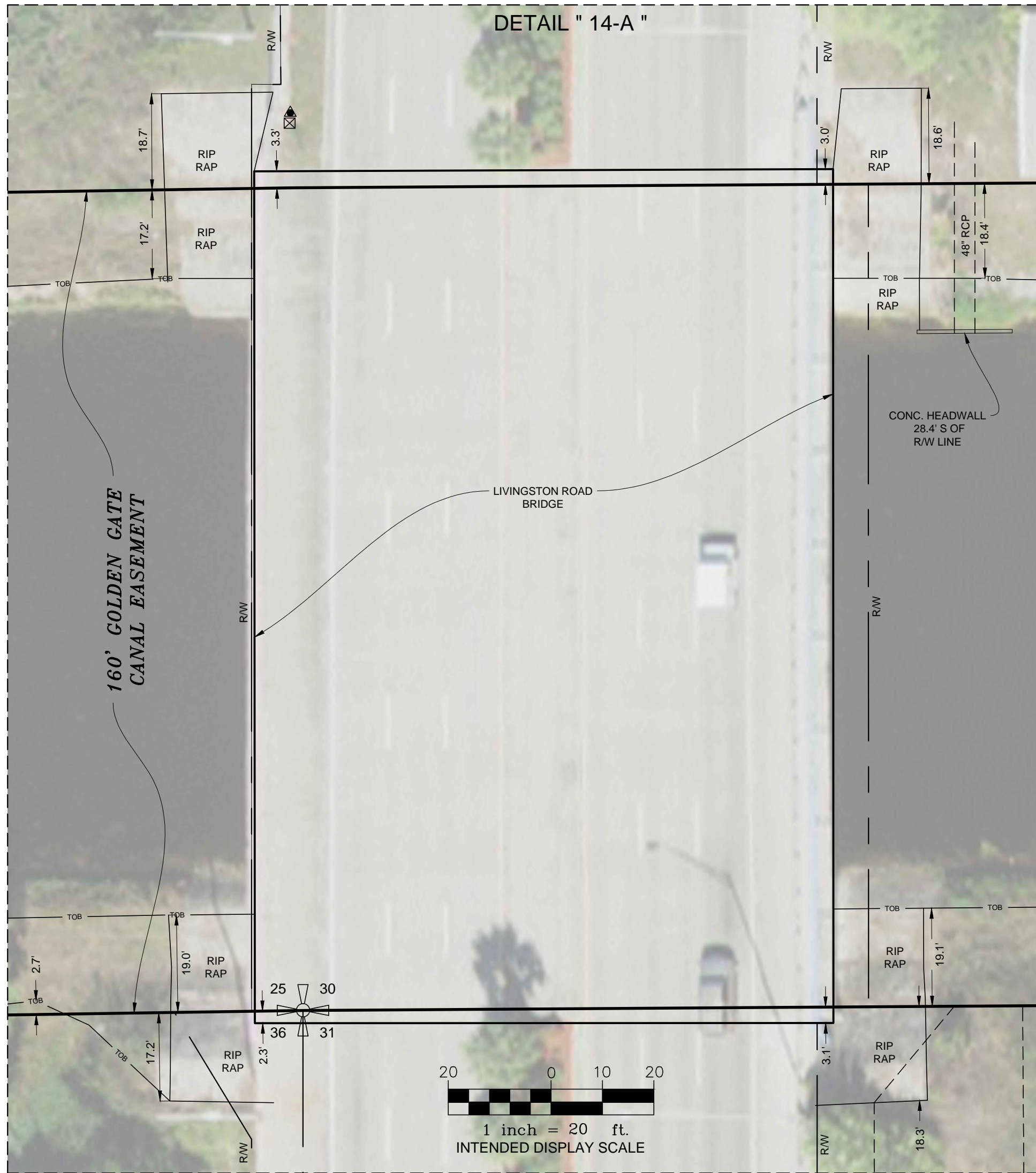
J:\2012\121001.10 GOLDEN GATE CANAL\DRAWING\121001.10 BND.DWG 11/20/2017 10:03 AM



MATCHLINE "E"
SEE SHEET 12 OF 46

MATCHLINE "F"
SEE SHEET 15 OF 46

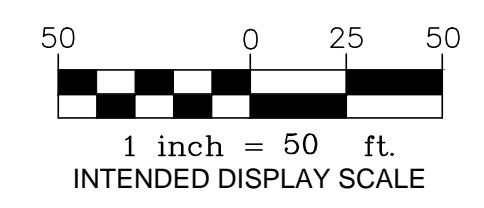
COORDINATE POINT TABLE					
POINT NO.	NORTHING	EASTING	LATITUDE	LONGITUDE	DESCRIPTION
B.P. 542	667468.40'	409853.43'	26° 10' 04.85" N	81° 45' 03.54" W	SET SFWMD ALUM. DISK EPOXIED TO CONCRETE STAMPED *GGMC R/W 2017 LB 7975' CARSONITE POST SET 2.8' NORTH
B.P. 543	667468.63'	409868.43'	26° 10' 04.85" N	81° 45' 03.38" W	SET SFWMD ALUM. DISK EPOXIED TO CONCRETE STAMPED *GGMC R/W 2017 LB 7975' CARSONITE POST SET 2.3' NORTH
B.P. 544	667468.78'	409878.42'	26° 10' 04.85" N	81° 45' 03.27" W	FOUND PK NAIL AND DISK "LB 3114" SOUTHEAST SECTION CORNER 25-49-25
B.P. 545	667469.45'	409978.42'	26° 10' 04.86" N	81° 45' 02.17" W	NOT FOUND OR SET, FALLS ON WATER MAIN PIPE
B.P. 546	667469.51'	409988.42'	26° 10' 04.87" N	81° 45' 02.06" W	SET SFWMD ALUM. DISK EPOXIED TO CONCRETE STAMPED *GGMC R/W 2017 LB 7975' CARSONITE POST SET 1.6' NORTH
B.P. 547	667628.38'	409850.97'	26° 10' 06.43" N	81° 45' 03.58" W	SET 4" x 4" CM WITH SFWMD ALUM. DISK STAMPED *GGMC R/W 2017 LB 7975' CARSONITE POST SET 2.0' SOUTH
B.P. 548	667628.65'	409868.42'	26° 10' 06.43" N	81° 45' 03.39" W	SET POURED IN PLACE CM WITH SFWMD ALUM. DISK STAMPED *GGMC R/W 2017 LB 7975' CARSONITE POST SET 2.0' SOUTH
B.P. 549	667628.78'	409876.67'	26° 10' 06.44" N	81° 45' 03.30" W	SET MAGNETIC NAIL WITH SFWMD BRASS DISK STAMPED *GGMC R/W 2017 LB 7975' CARSONITE POST NOT SET
B.P. 550	667629.45'	409978.42'	26° 10' 06.45" N	81° 45' 02.18" W	NOT FOUND OR SET, FALLS ON WATER MAIN PIPE
B.P. 551	667629.52'	409988.42'	26° 10' 06.45" N	81° 45' 02.07" W	SET SFWMD ALUM. DISK IN BROKEN UP CONCRETE STAMPED *GGMC R/W 2017 LB 7975' CARSONITE POST SET 2.5' SOUTH
B.P. 552	667632.96'	410510.75'	26° 10' 06.51" N	81° 44' 56.34" W	SET 4" x 4" CM WITH SFWMD ALUM. DISK STAMPED *GGMC R/W 2017 LB 7975' CARSONITE POST SET 2.0' SOUTH
B.P. 553	667472.97'	410511.81'	26° 10' 04.93" N	81° 44' 56.32" W	SET 4" x 4" CM WITH SFWMD ALUM. DISK STAMPED *GGMC R/W 2017 LB 7975' CARSONITE POST SET 1.0' NORTH



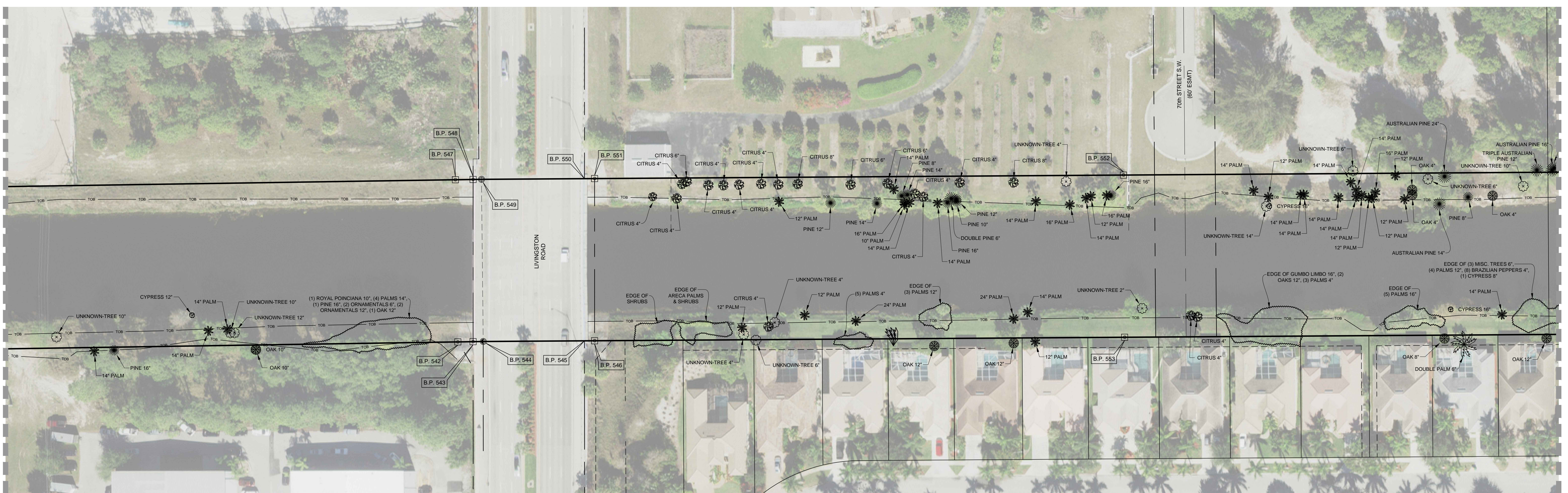
BOUNDARY DETAIL
SEE SHEET 15 FOR TREE DETAIL



<p>SOUTH FLORIDA WATER MANAGEMENT DISTRICT INFRASTRUCTURE MANAGEMENT BUREAU - SURVEY & MAPPING SECTION 3301 GUN CLUB ROAD WEST PALM BEACH, FLORIDA 33416-4680</p>	<p>REVISIONS</p> <table border="1" style="width: 100%; border-collapse: collapse;"> <thead> <tr> <th>NO.</th> <th>DATE</th> <th>DESCRIPTION</th> </tr> </thead> <tbody> <tr> <td> </td> <td> </td> <td> </td> </tr> <tr> <td> </td> <td> </td> <td> </td> </tr> </tbody> </table>	NO.	DATE	DESCRIPTION						
NO.	DATE	DESCRIPTION								
<p>BOUNDARY SURVEY OF A PORTION OF GOLDEN GATE CANAL LYING IN NAPLES, COLLIER COUNTY, FLORIDA SECTIONS 25 & 26, TWP 49 S, RANGE 25 E SECTIONS 26, 27, 28, 29 AND 30, TWP 49 S, RANGE 26 E</p>										
<p>CADD FILE NO. 121001.10 BND DRAWING NO. 14 SHEET OF 46</p>										



MATCHLINE "EE"
SEE SHEET 13 OF 46



MATCHLINE "FF"
SEE SHEET 17 OF 46

SOUTH FLORIDA WATER MANAGEMENT DISTRICT
INFRASTRUCTURE MANAGEMENT BUREAU - SURVEY & MAPPING SECTION

3301 GUN CLUB ROAD
WEST PALM BEACH, FLORIDA 33416-4680

J:\2012\121001.10 GOLDEN GATE CANAL\DRAWING\121001.10 BND.DWG 11/20/2017 10:05 AM

NO.	DATE	BY	CHECKED	REVISIONS

DRAWN: R.J.O. CHECKED: CC. DWG. DATE: 7-10-17 SCALE: _____
 FIELD PERSON(S) LD., J.C., R.E., B.P., G.P., J.R., & J.D.
 FIELD DATE(S): SEE NOTE 14
 FIELD BOOK(S): SEE NOTE 14
 PAGE(S): SEE NOTE 14
 DATA COLLECTOR FILE(S):

BOUNDARY SURVEY OF A PORTION OF
GOLDEN GATE CANAL
LYING IN
NAPLES, COLLIER COUNTY, FLORIDA
SECTIONS 25 & 26, TWP 49 S, RANGE 25 E
SECTIONS 26, 27, 28, 29 AND 30, TWP 49 S, RANGE 26 E

CADD FILE NO. 121001.10 BND
DRAWING NO. _____
15 SHEET OF 46

TREE DETAIL
SEE SHEET 14 FOR BOUNDARY DETAIL



