

Settlement Agreement

April - June 2004 Report

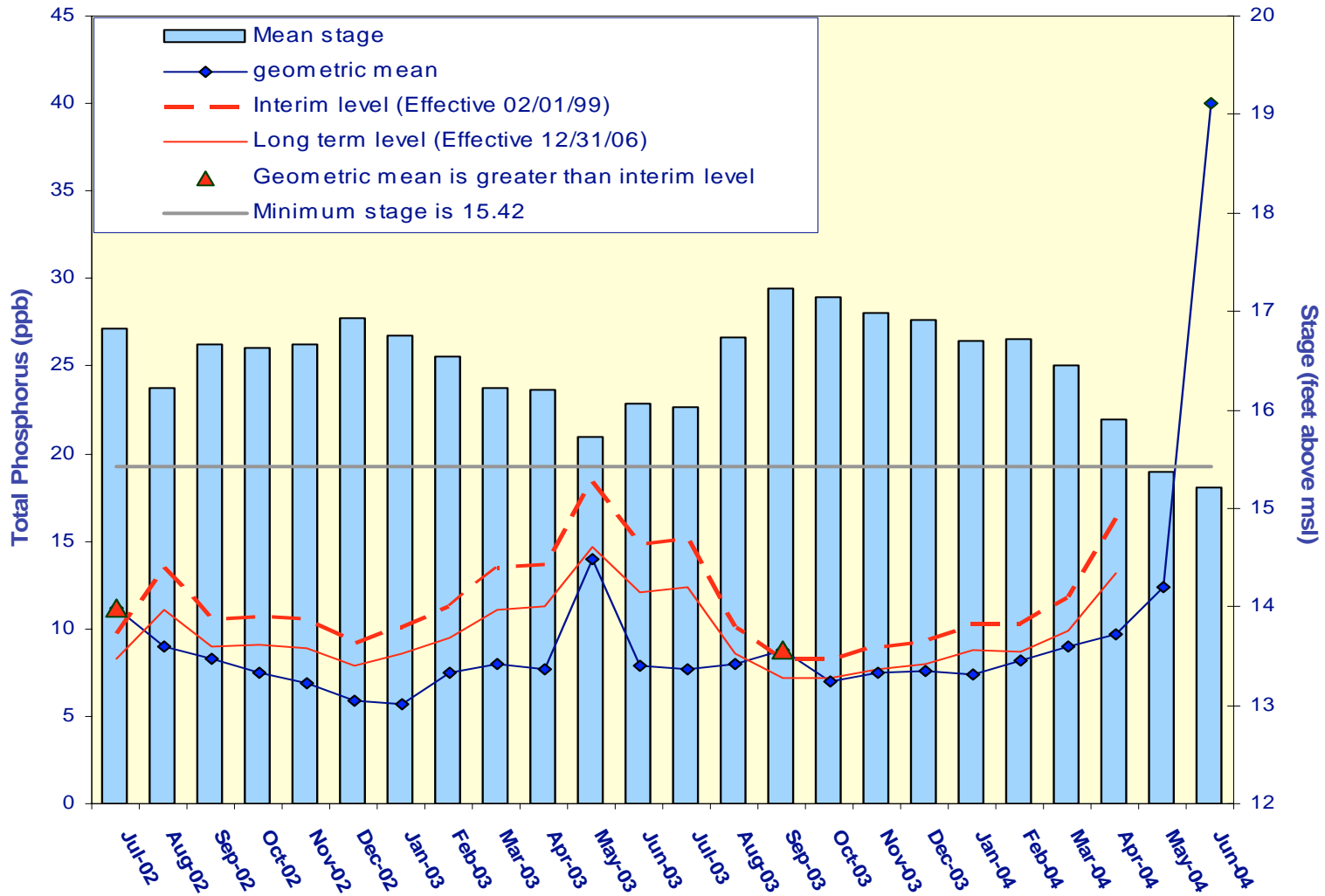
Prepared for the

Technical Oversight Committee

November 30, 2004



A.R.M Loxahatchee National Wildlife Refuge Monthly Total Phosphorus Geometric Mean Concentrations



Loxahatchee National Wildlife Refuge

Total Phosphorus Compliance Tracking

Month - Year	Geometric Mean Concentratio	Interim Level (ppb)	Long Term Level (ppb)	Average Stage	Number of TP Samples	Number of Stage Measurements
	(ppb)	Effective 2/1/99	Effective 12/31/06	(ft,NGVD)		
Jul-2002	11.2	9.7	8.3	16.82	14	3
Aug-2002	9.0	13.5	11.1	16.22	12	3
Sep-2002	8.3	10.6	8.9	16.66	11	3
Oct-2002	7.5	10.7	9.0	16.64	12	3
Nov-2002	6.9	10.5	8.9	16.66	12	3
Dec-2002	5.9	9.2	7.9	16.93	14	3
Jan-2003	5.7	10.0	8.5	16.76	13	3
Feb-2003	7.5	11.3	9.5	16.54	11	3
Mar-2003	8.0	13.4	11.1	16.23	9	3
Apr-2003	7.6	13.7	11.2	16.20	12	3
May-2003	14.0	18.3	14.6	15.72	7	3
Jun-2003	7.9	14.8	12.1	16.06	11	3
Jul-2003	7.7	15.2	12.3	16.02	9	3
Aug-2003	8.0	10.1	8.6	16.74	14	3
Sep-2003	8.8	8.3	7.2	17.23	13	3
Oct-2003	7.0	8.3	7.2	17.15	14	3
Nov-2003	7.5	8.9	7.7	16.98	11	3
Dec-2003	7.6	9.3	8.0	16.91	14	3
Jan-2004	7.4	10.3	8.7	16.71	14	3
Feb-2004	8.2	10.3	8.7	16.71	14	3
Mar-2004	9.0	11.8	9.8	16.46	14	3
Apr-2004	9.6	16.3	13.1	15.91	9	3
May-2004	12.4	N/A	N/A	15.37	9	3
Jun-2004	40.0	N/A	N/A	15.22	2	3

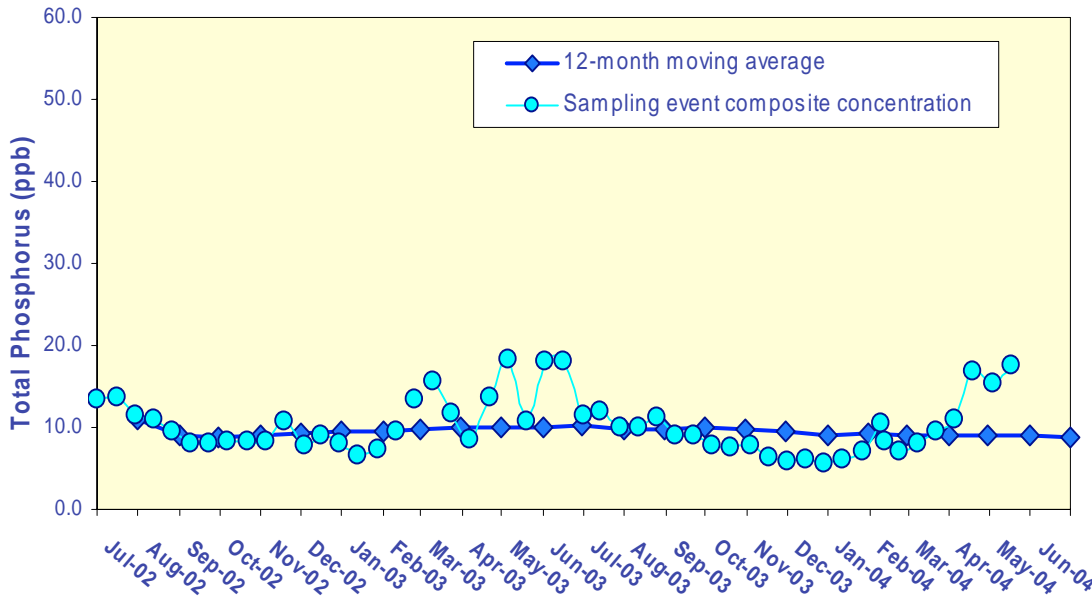
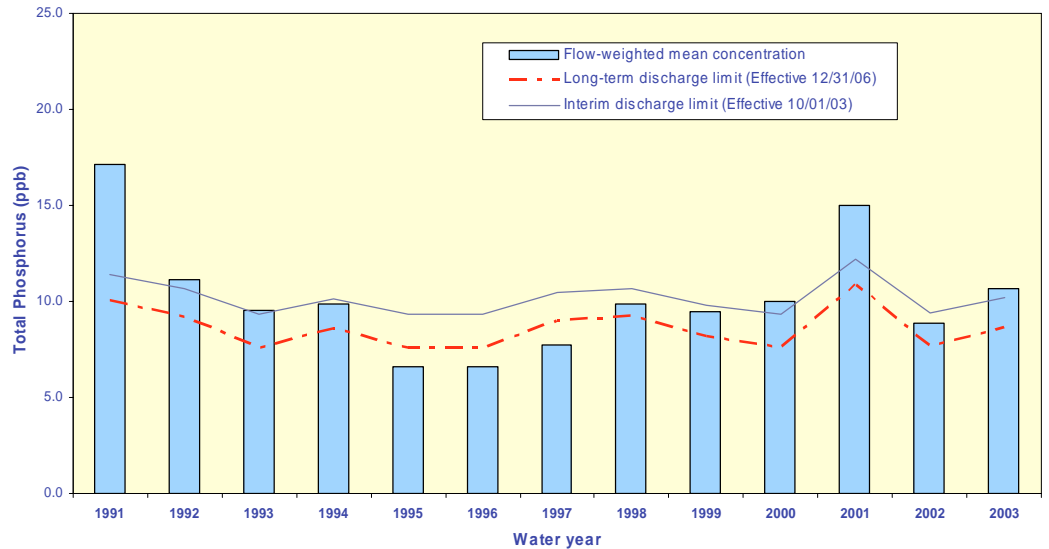
Refuge TP Compliance Tracking for April – September 2004

Month - Year	Geometric Mean Concentration	Interim Level (ppb) Effective 2/1/99	Long Term Level (ppb) Effective 12/31/06	Average Stage	Number of TP Samples	Number of Stage Measurements
	(ppb)			(ft,NGVD)		
Apr-2004	9.6	16.3	13.1	15.91	9	3
May-2004	124	NA	NA	15.37	9	3
Jun-2004	40.0	NA	NA	15.22	2	3
Jul-2004	21.0	NA	NA	15.00	1	3
Aug-2004	17.5	15.4	125	16.00	12	3
Sep-2004	85	9.8	84	16.80	14	3

Note: July through September values are preliminary data.

Flow-weighted Mean Concentrations Inflows to Everglades National Park through Shark River Slough

12-month moving average at the end of each water year compared to the TP interim and long-term limits.



12-month moving average at the end of each month and the composite TP concentration for each sampling event.

Shark River Slough TP Concentration Compliance Tracking

12-Month Period Ending On	Total Period Flow	Flow Weighted Mean Total Phosphorus	Interim Limit (ppb)	Long Term Limit (ppb)	Percent of Sampling Events Greater than 10 ppb	
			Effective	Effective	(%)	
	(Kac-ft)	(ppb)	10/1/2003	12/31/2006	Guideline	Observed
31-Jul-02	958.5	10.9	9.7	8.1	42.4	45.8
31-Aug-02	1003.2	9.1	9.6	7.9	41.4	39.1
30-Sep-02	1048.1	8.8	9.4	7.7	40.4	30.4
31-Oct-02	999.9	8.9	9.6	7.9	41.5	30.4
30-Nov-02	884.5	9.4	10.0	8.5	44.2	34.8
31-Dec-02	802.2	9.6	10.4	8.9	46.3	33.3
31-Jan-03	831.1	9.5	10.3	8.8	45.6	34.8
28-Feb-03	843.6	9.7	10.2	8.7	45.2	39.1
31-Mar-03	812.1	9.9	10.3	8.9	46.1	47.8
30-Apr-03	832.1	9.9	10.2	8.8	45.5	43.5
31-May-03	871.3	10.0	10.1	8.6	44.5	45.8
30-Jun-03	901.1	10.2	10.0	8.4	43.8	50.0
31-Jul-03	891.3	9.8	10.0	8.5	44.0	50.0
31-Aug-03	839.3	9.9	10.2	8.7	45.3	50.0
30-Sep-03	850.1	10.0	10.2	8.7	45.1	50.0
31-Oct-03	921.8	9.7	9.9	8.3	43.3	50.0
30-Nov-03	1001.5	9.5	9.6	7.9	41.4	46.2
31-Dec-03	1076.8	9.1	9.4	7.6	40.1	46.2
31-Jan-04	1049.0	9.2	9.4	7.7	40.4	46.2
29-Feb-04	1033.9	9.1	9.5	7.8	40.7	44.4
31-Mar-04	1036.7	8.9	9.4	7.7	40.7	37.0
30-Apr-04	1012.9	9.0	9.5	7.9	41.2	40.7
31-May-04	980.2	9.0	9.7	8.0	41.9	40.7
30-Jun-04	942.5	8.7	9.8	8.2	42.8	36.0

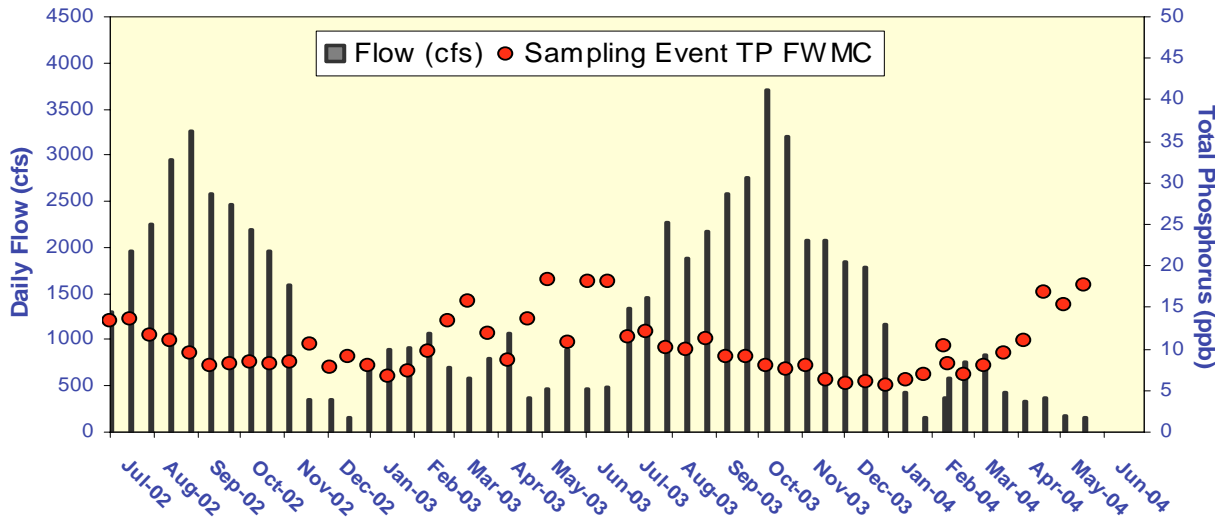
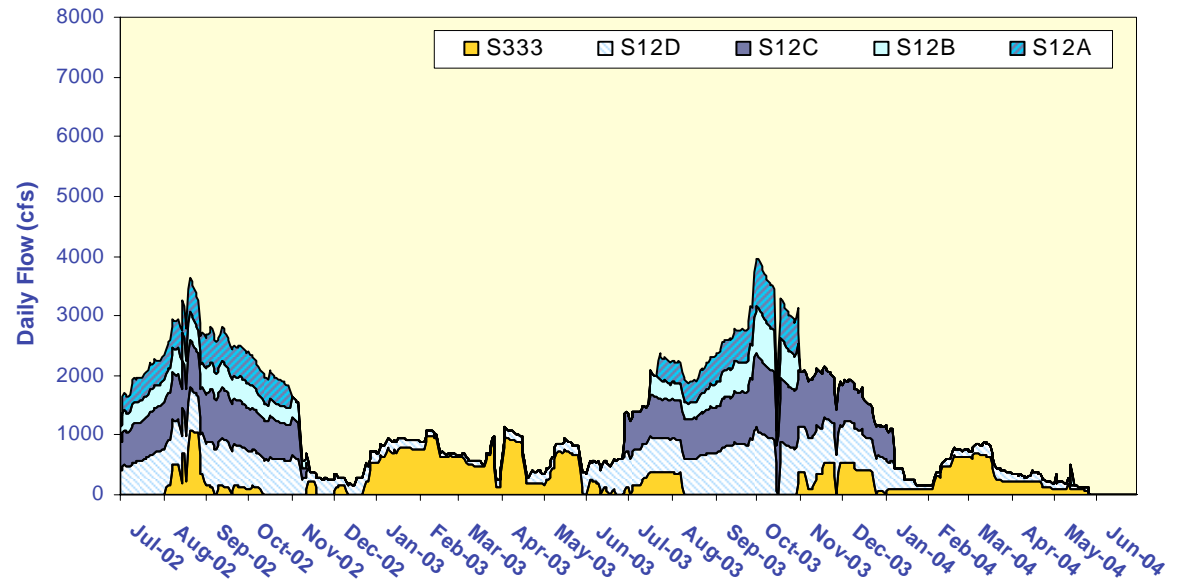
Shark River Slough TP Concentration Compliance Tracking for April – September 2004

12-Month Period Ending On	Total Period Flow	Flow Weighted Mean Total Phosphorus	Interim Limit (ppb)	Long Term Limit (ppb)	Percent of Sampling Events Greater than 10 ppb	
			Effective	Effective	(%)	
	(Kac-ft)	(ppb)	10/1/2003	12/31/2006	Guideline	Observed
30-Apr-04	1012.9	9.0	9.5	7.9	41.2	40.7
31-May-04	980.2	9.0	9.7	8.0	41.9	40.7
30-Jun-04	942.5	8.7	9.8	8.2	42.8	36.0
31-Jul-04	832.0	8.4	10.2	8.8	45.5	27.3
31-Aug-04	732.5	8.2	10.7	9.3	48.2	28.6
30-Sep-04	704.0	8.4	10.8	9.4	49.0	35.0

Note: July through September values are preliminary data.

Shark River Slough – Daily Flows and Sampling Event FWMC

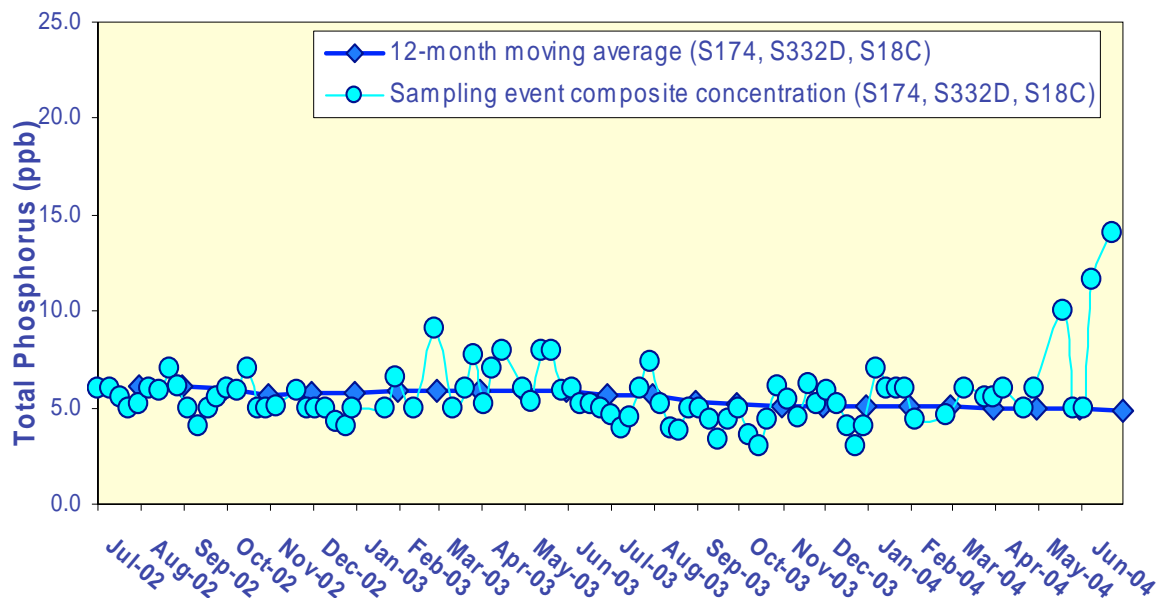
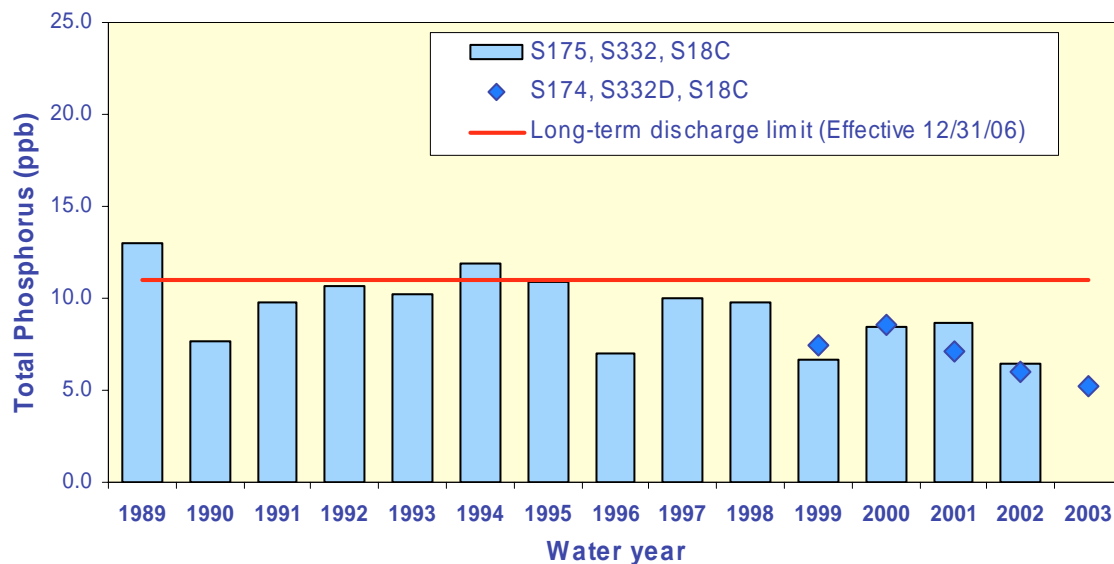
Daily flows into Shark River Slough by structure



Daily flow at Shark River Slough structures and the corresponding TP FWMCs for individual sampling events.

TP flow-weighted mean concentrations in inflows to the ENP through Taylor Slough and the Coastal Basins

The 12-month moving average FWMC at the end of each water year compared to the 11 ppb long-term total phosphorus limit.



The 12-month moving average FWMC at the end of each month and the composite TP concentration for each sampling event.

**Taylor Slough and the Coastal Basins
TP Concentration
Compliance Tracking**

12-Month Period Ending On	Total Period Flow	Flow Weighted Mean Total Phosphorus	Limit (Effective 12/31/06)	Percent of Sampling Events Greater than 10 ppb	
			(ppb)	(%)	
	(Kac-ft)	(ppb)	Long Term	Guideline	Observed
31-Jul-02	392.1	6.1	11.0	53.1	4.7
31-Aug-02	388.3	6.1	11.0	53.1	4.7
30-Sep-02	371.8	6.0	11.0	53.1	4.7
31-Oct-02	316.0	5.7	11.0	53.1	4.5
30-Nov-02	271.6	5.8	11.0	53.1	4.8
31-Dec-02	249.8	5.7	11.0	53.1	4.7
31-Jan-03	234.2	5.8	11.0	53.1	5.0
28-Feb-03	229.9	5.9	11.0	53.1	5.0
31-Mar-03	230.5	5.9	11.0	53.1	4.9
30-Apr-03	231.5	5.8	11.0	53.1	4.8
31-May-03	244.2	5.8	11.0	53.1	0.0
30-Jun-03	249.8	5.6	11.0	53.1	0.0
31-Jul-03	209.0	5.6	11.0	53.1	0.0
31-Aug-03	216.1	5.3	11.0	53.1	0.0
30-Sep-03	221.9	5.2	11.0	53.1	0.0
31-Oct-03	233.8	5.0	11.0	53.1	0.0
30-Nov-03	276.6	5.1	11.0	53.1	0.0
31-Dec-03	293.9	5.0	11.0	53.1	0.0
31-Jan-04	295.9	5.1	11.0	53.1	0.0
29-Feb-04	301.4	5.0	11.0	53.1	0.0
31-Mar-04	297.9	5.0	11.0	53.1	0.0
30-Apr-04	292.3	5.0	11.0	53.1	0.0
31-May-04	274.8	4.9	11.0	53.1	2.2
30-Jun-04	238.0	4.9	11.0	53.1	6.8

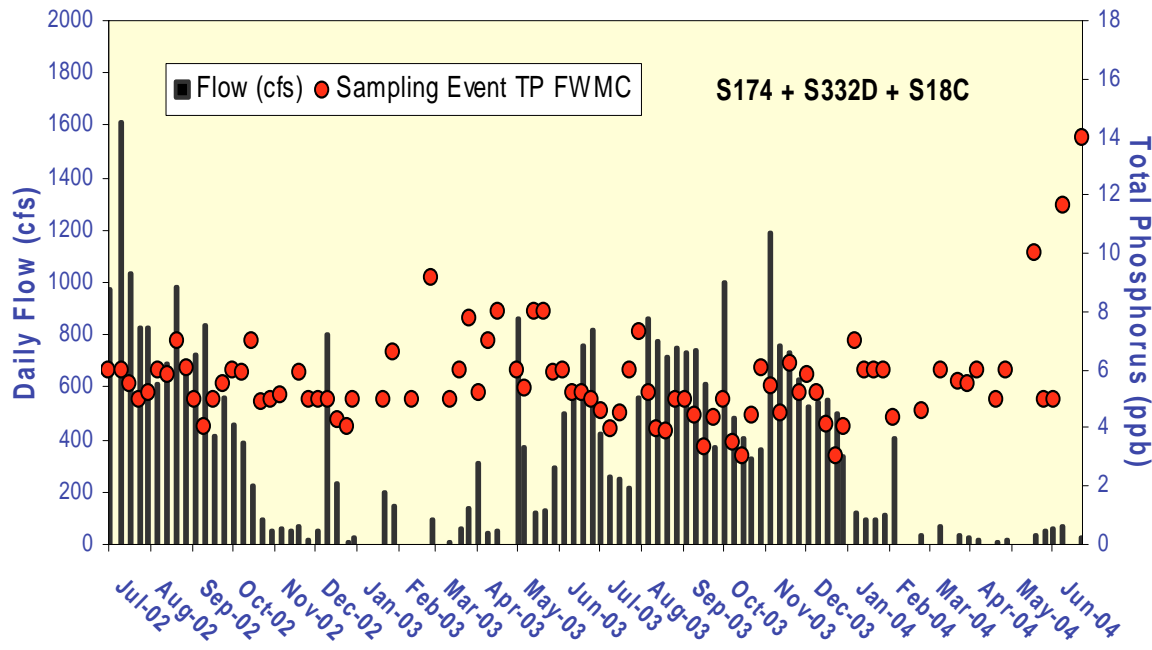
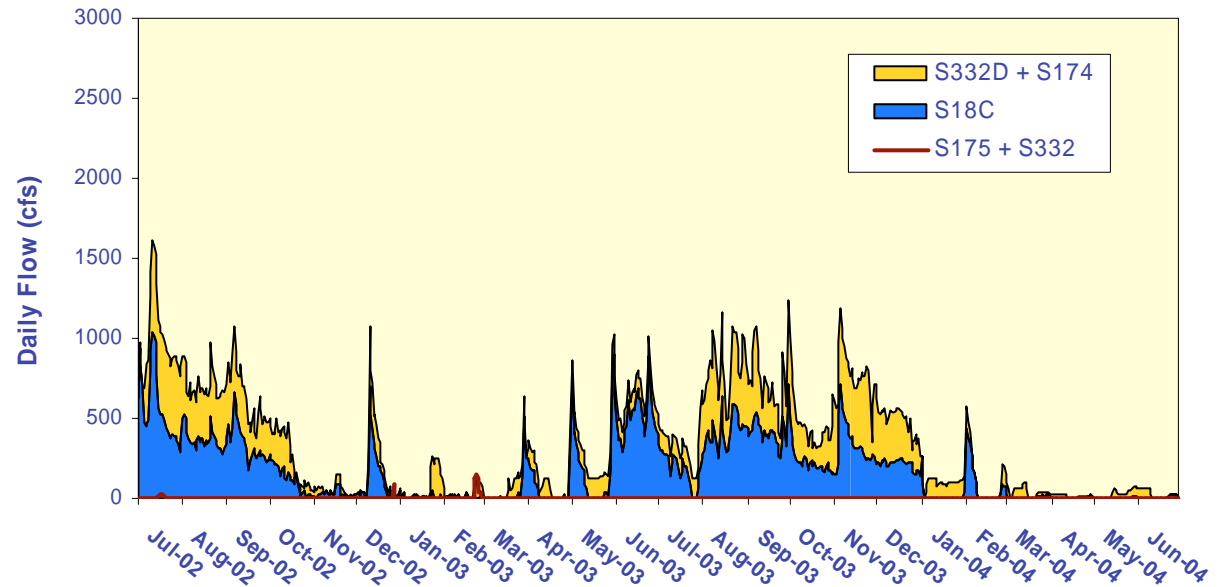
Taylor Slough and the Coastal Basins TP Concentration Compliance Tracking For April – September 2004

12-Month Period Ending On	Total Period Flow	Flow Weighted Mean Total Phosphorus	Limit (Effective 12/31/06)	Percent of Sampling Events Greater than 10 ppb	
			(ppb)	(%)	
	(Kac-ft)	(ppb)	Long Term	Guideline	Observed
30-Apr-04	292.3	5.0	11.0	53.1	0.0
31-May-04	274.8	4.9	11.0	53.1	2.2
30-Jun-04	238.0	4.9	11.0	53.1	6.8
31-Jul-04	224.7	5.0	11.0	53.1	11.4
31-Aug-04	206.9	5.1	11.0	53.1	11.4
30-Sep-04	187.2	5.1	11.0	53.1	11.6

Note: July through September values are preliminary data.

Taylor Slough and S18C – Daily Flows and Sampling Event FWMC

Daily flows into Everglades National Park through Taylor Slough and S18C.



Daily flows at Taylor Slough structures and S18C and the corresponding TP for individual sampling events.