



SETTLEMENT AGREEMENT REPORT

July – September 2012

(UPDATE)

Stuart Van Horn, P.E.

Section Leader

Compliance Assessment & Reporting Section
Water Quality Bureau

Technical Oversight Committee

Original: December 18, 2012

Update: May 14, 2013



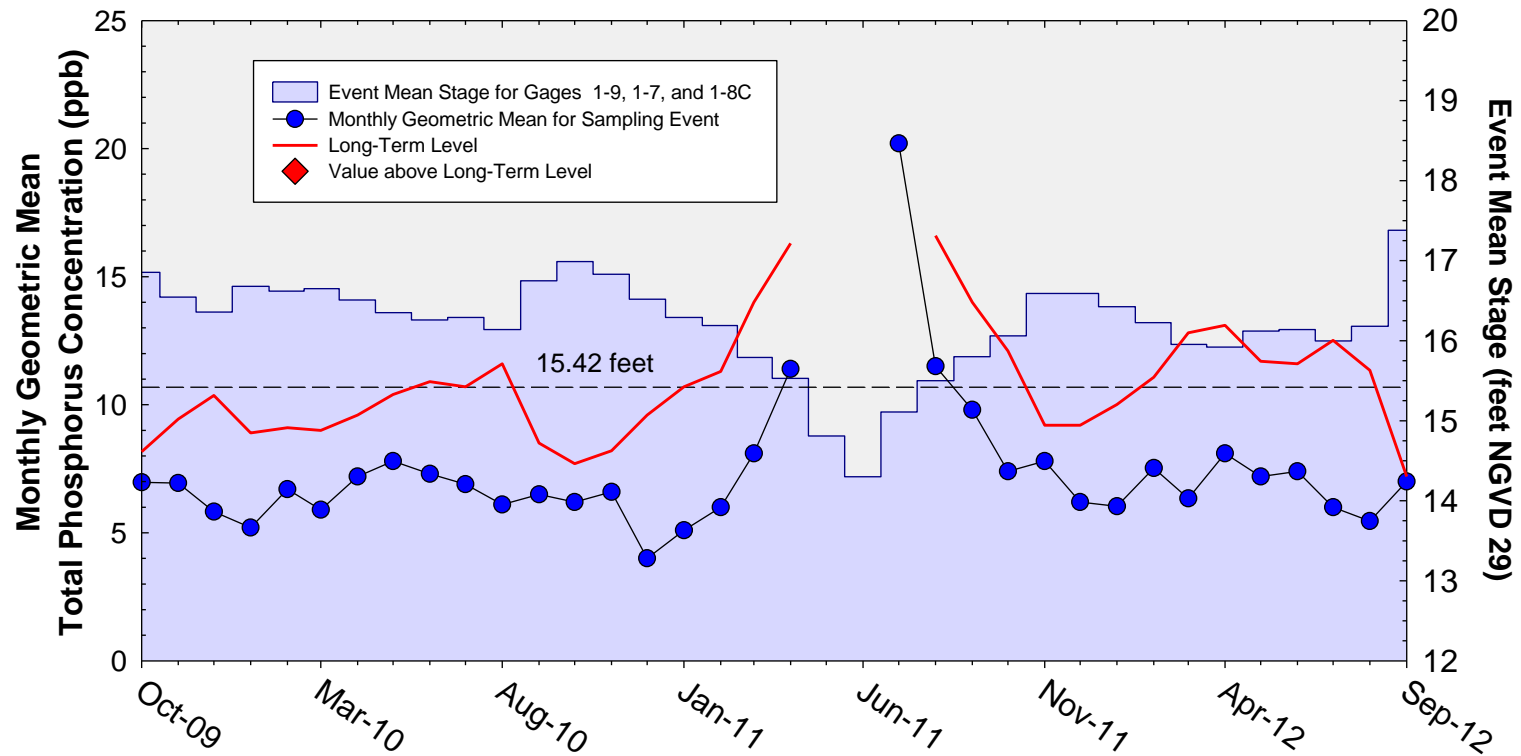
SUMMARY

Month	Geometric Mean TP Concentration (ppb)	Long-term Level (ppb)	Mean Stage (ft NGVD 29)	Number of Samples	
Arthur R. Marshall Loxahatchee National Wildlife Refuge					
Jul 2012	6.0	12.5	16.00	14	
Aug 2012	5.5	11.3	16.18	13	
Sep 2012	7.0	7.2	17.38	14	
12-Month Period Ending	Total Flow (kac-ft)	12-Month Flow-weighted Mean TP Concentration (ppb)	Long-term Limit (ppb)	Percent of Sampling Events Greater than 10 ppb	
				Guideline	Observed
Everglades National Park – Shark River Slough					
Jul 2012	644.9	9.3	9.7	50.7	45.8
Aug 2012	731.1	9.2	9.3	48.2	40.0
Sep 2012	818.3	8.9 (8.8*)	8.8	45.9	36.0
Everglades National Park – Taylor Slough and Coastal Basins					
Jul 2012	255.1	5.8	11.0	53.1	2.1
Aug 2012	273.0	5.8	11.0	53.1	2.0
Sep 2012	290.7	5.7	11.0	53.1	2.0

* A 12-month FWMC calculation including the re-sampled datum (7 ppb) at S12D on December 8, 2011 is presented in parentheses as additional information.

A.R.M Loxahatchee National Wildlife Refuge

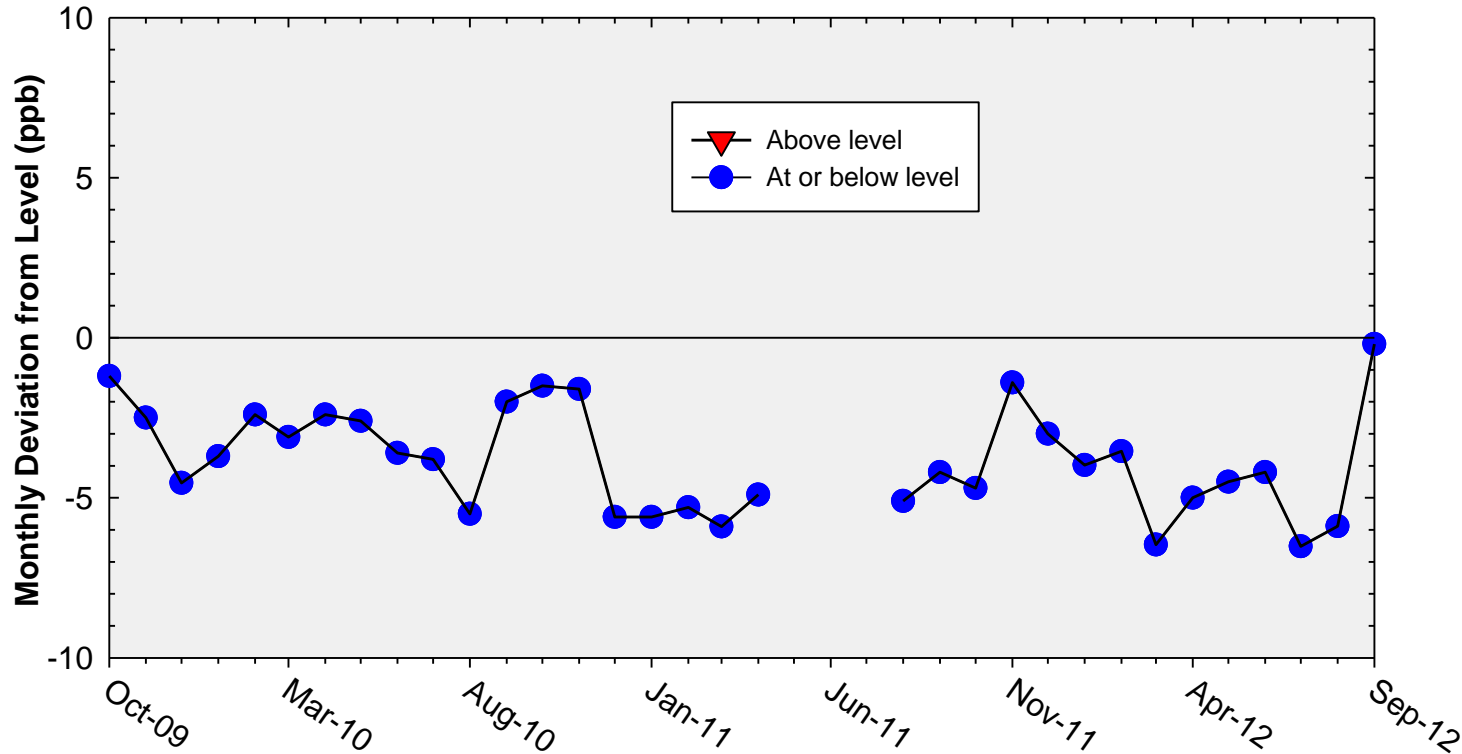
Monthly Total Phosphorus Geometric Mean Concentrations



Note: Long-term level was not applicable for May 2011, June 2011, and July 2011 (average stage < 15.42 ft).

A.R.M Loxahatchee National Wildlife Refuge

Deviation of monthly geometric mean total phosphorus concentrations with calculated long-term levels



Note: Long-term level was not applicable for May 2011, June 2011, and July 2011 (average stage < 15.42 ft).

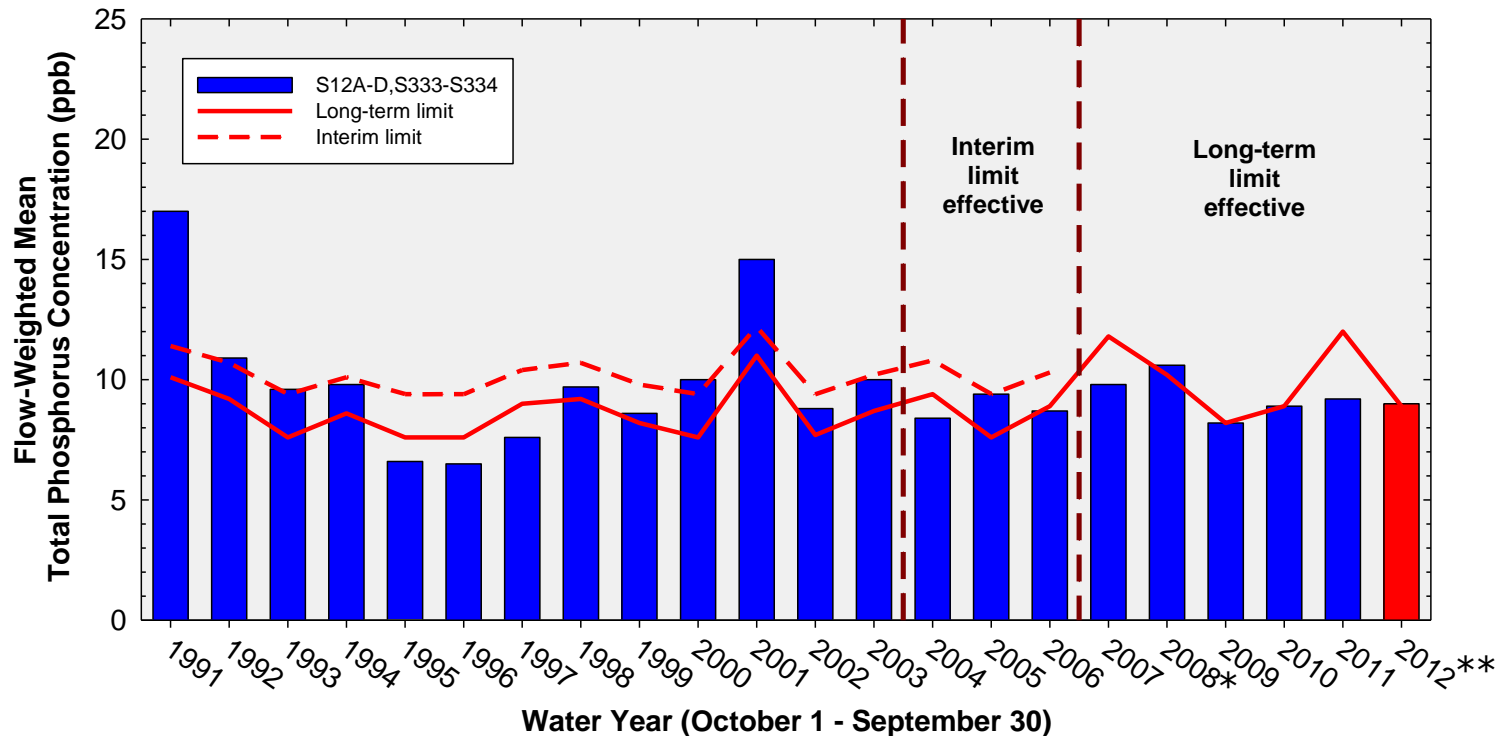
Refuge TP Compliance Tracking For July 2012 – November 2012

Month	Geometric Mean TP Concentration (ppb)	Long-Term Level (ppb) Effective 12/31/2006	Average Stage (ft NGVD 29)	Number of Samples
Jul-2012	6.0	12.5	16.00	14
Aug-2012	5.5	11.3	16.18	13
Sep-2012	7.0	7.2	17.38	14
Oct-2012*	7.6	7.2	17.20	14
Nov-2012	6.1	7.3	17.11	14

Note: October 2012 and November 2012 values are preliminary.

* October 2012 14-station geometric mean was higher than the long-term level.

Annual Flow-weighted Mean Concentrations Inflows to ENP through Shark River Slough

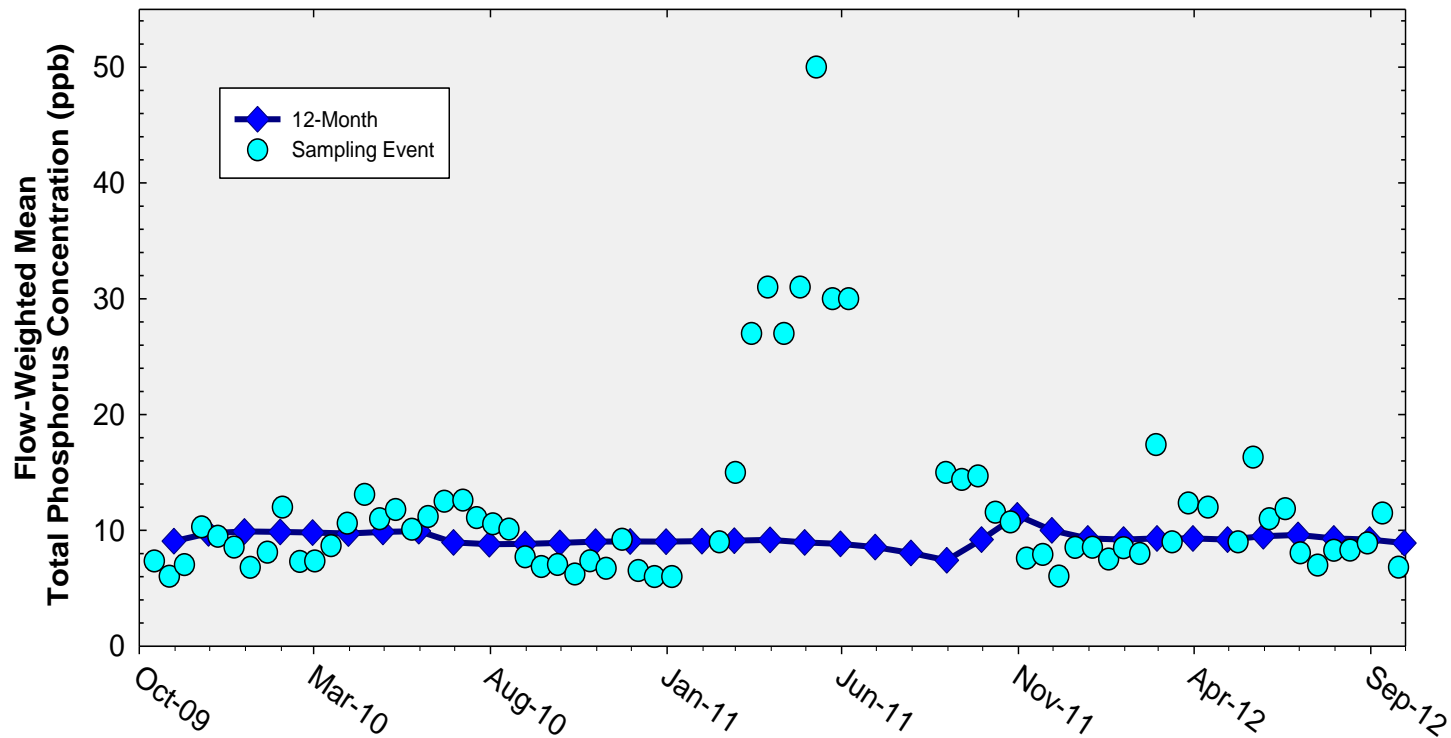


12-month FWMC at the end of each water year compared to the TP interim and long-term limits

* TOC determined WY2008 exceedance did not constitute a violation of the long-term limit.

** WY2012 FWMC exceeded the long-term limit.

Flow-Weighted Mean Concentrations Inflows to ENP through Shark River Slough



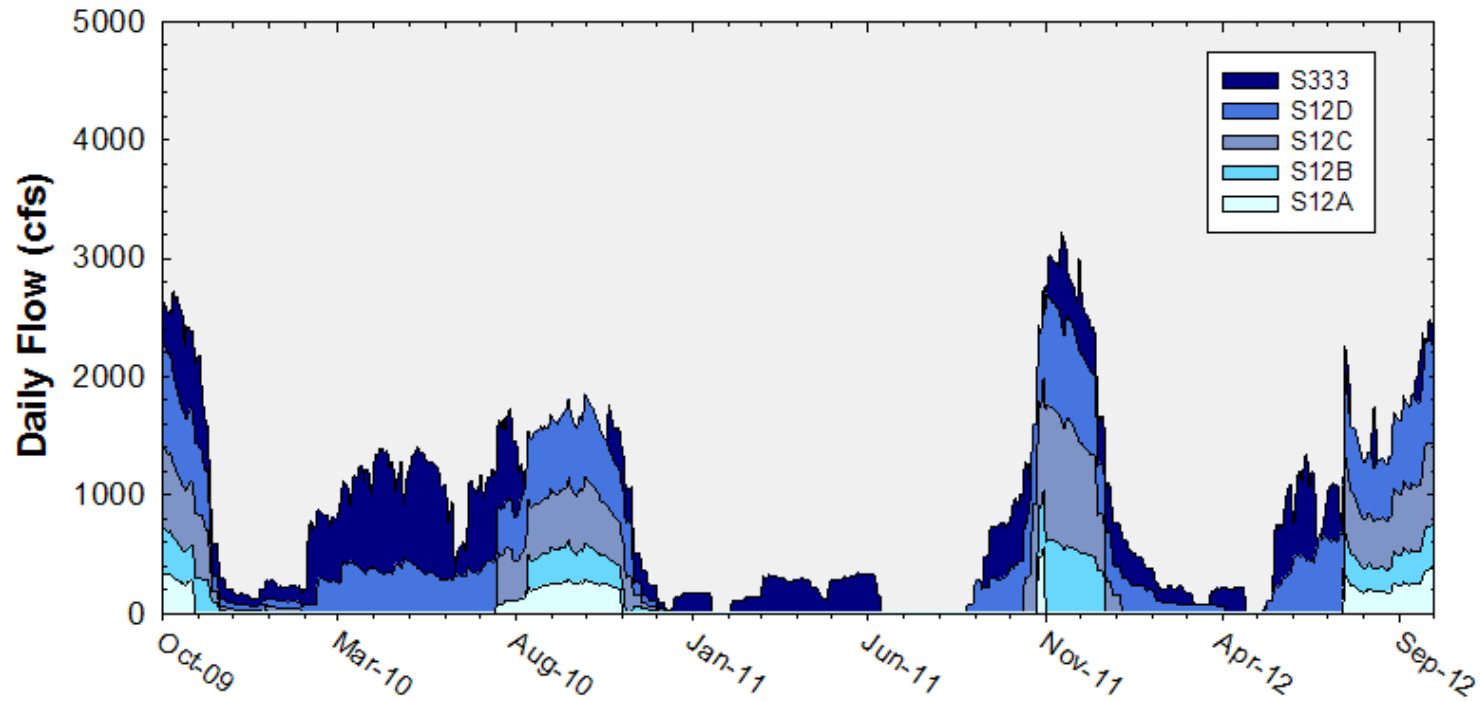
12-month FWMC at the end of each month and the composite TP concentration for each sampling event

Shark River Slough TP Concentration Compliance Tracking for July 2012 – September 2012

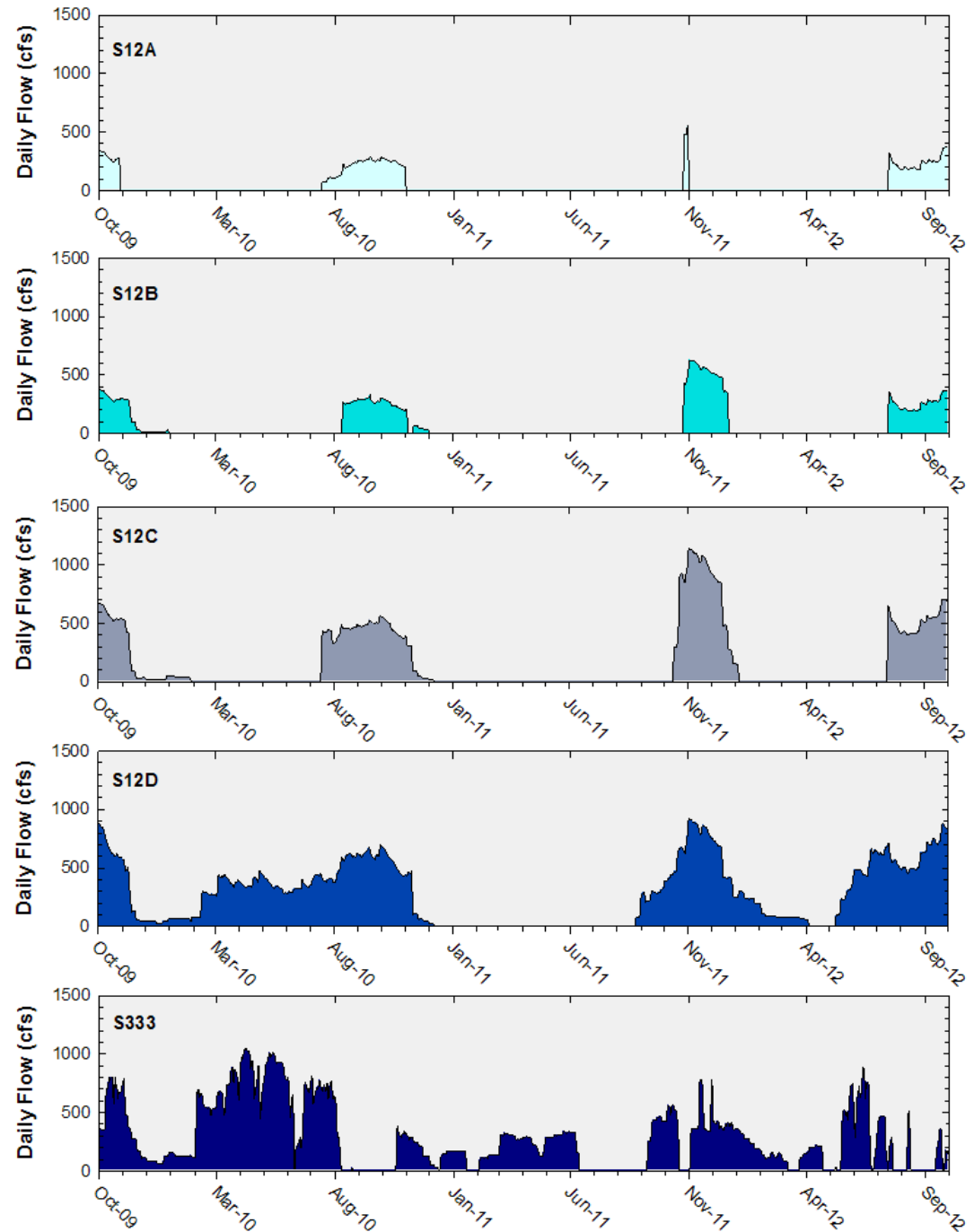
12-Month Period	Total Flow (kac-ft)	Flow-Weighted Mean TP Concentration (ppb)	Long-Term Limit (ppb) <i>Effective 12/31/2006</i>	Percent of Sampling Events Greater than 10 ppb	
				Guideline	Observed
Aug 2011 - July 2012	644.9	9.3	9.7	50.7	45.8
Sep 2011 - Aug 2012	731.1	9.2	9.3	48.2	40.0
Oct 2011 - Sep 2012	818.3	8.9 (8.8*)	8.8	45.9	36.0

* A 12-month FWMC calculation including the re-sampled datum (7 ppb) at S12D on December 8, 2011 is presented in parentheses as additional information.

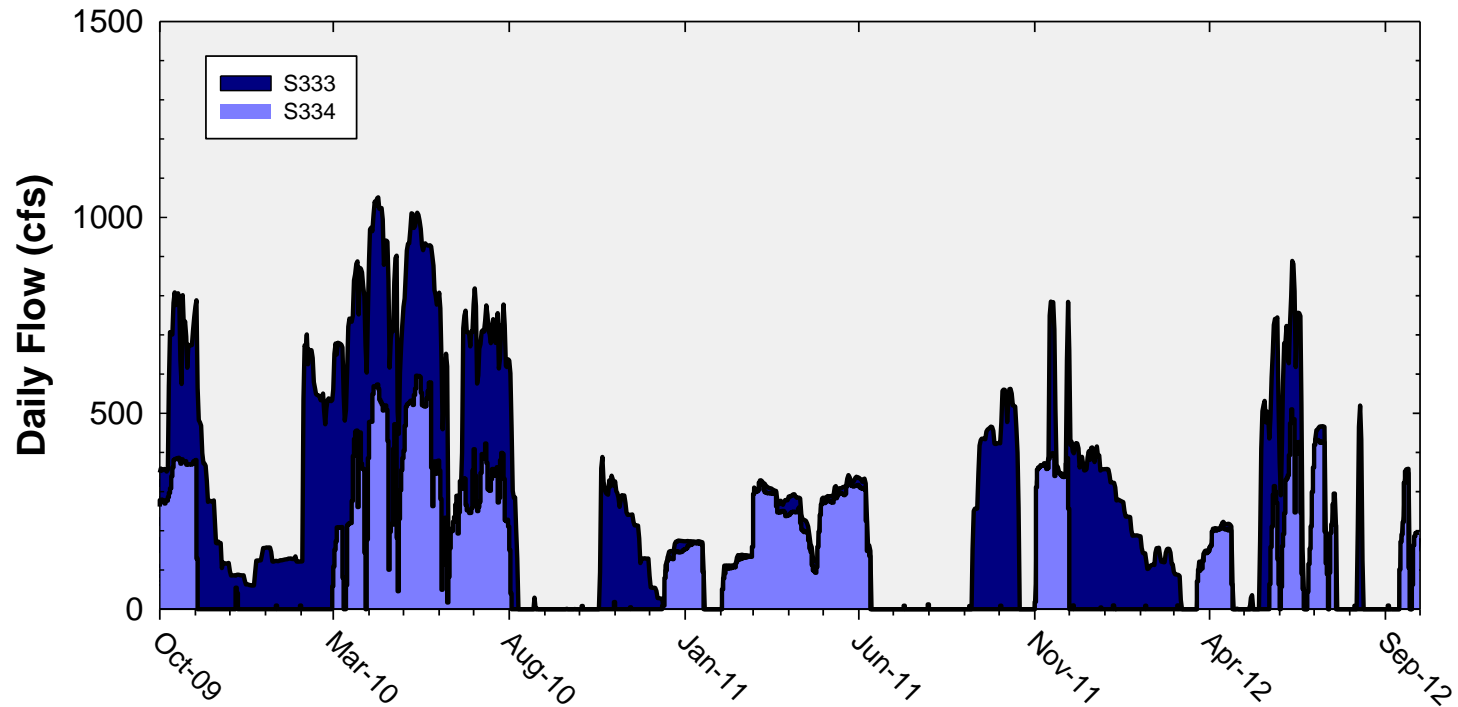
Shark River Slough Daily Flows



Daily Flows at individual inflow structures to Shark River Slough

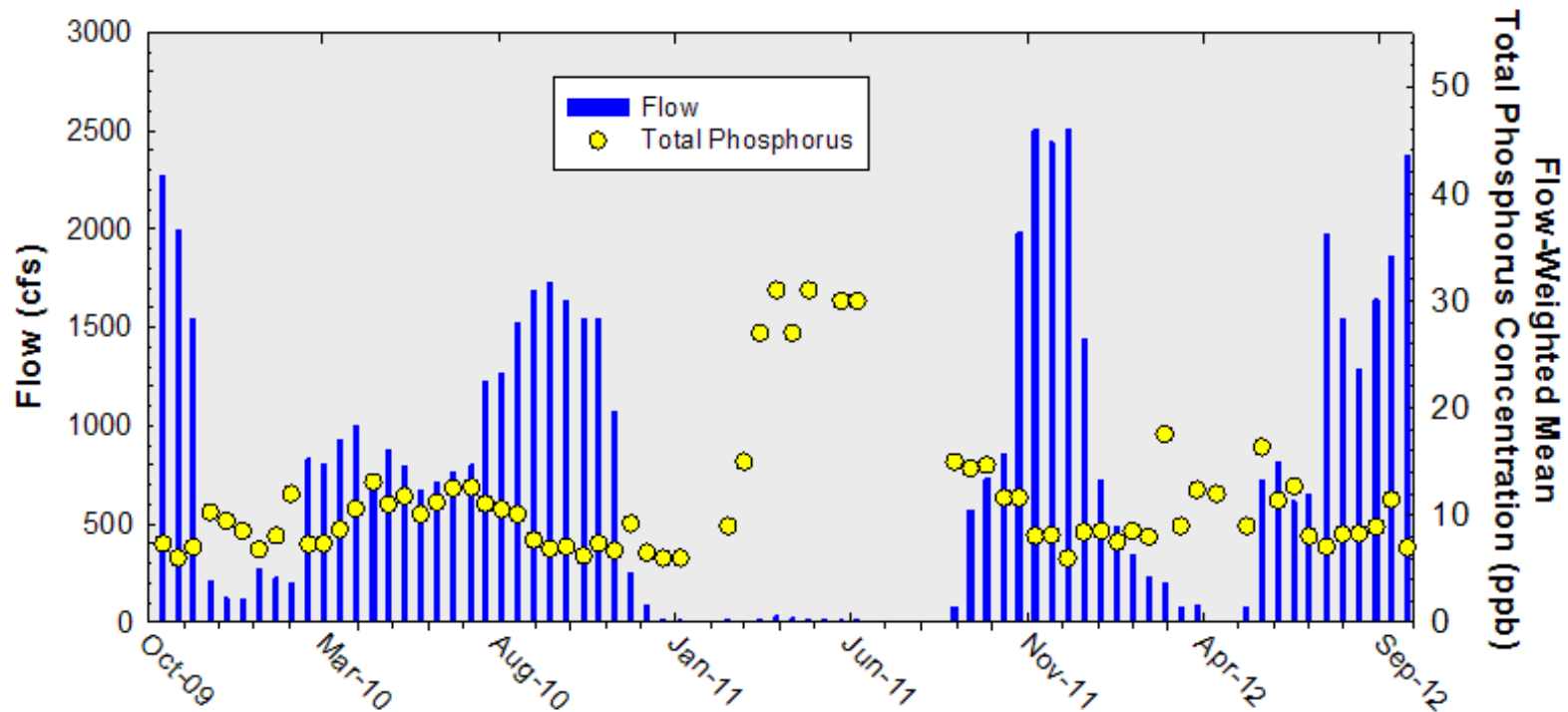


Daily Flows at S333 and S334



Shark River Slough

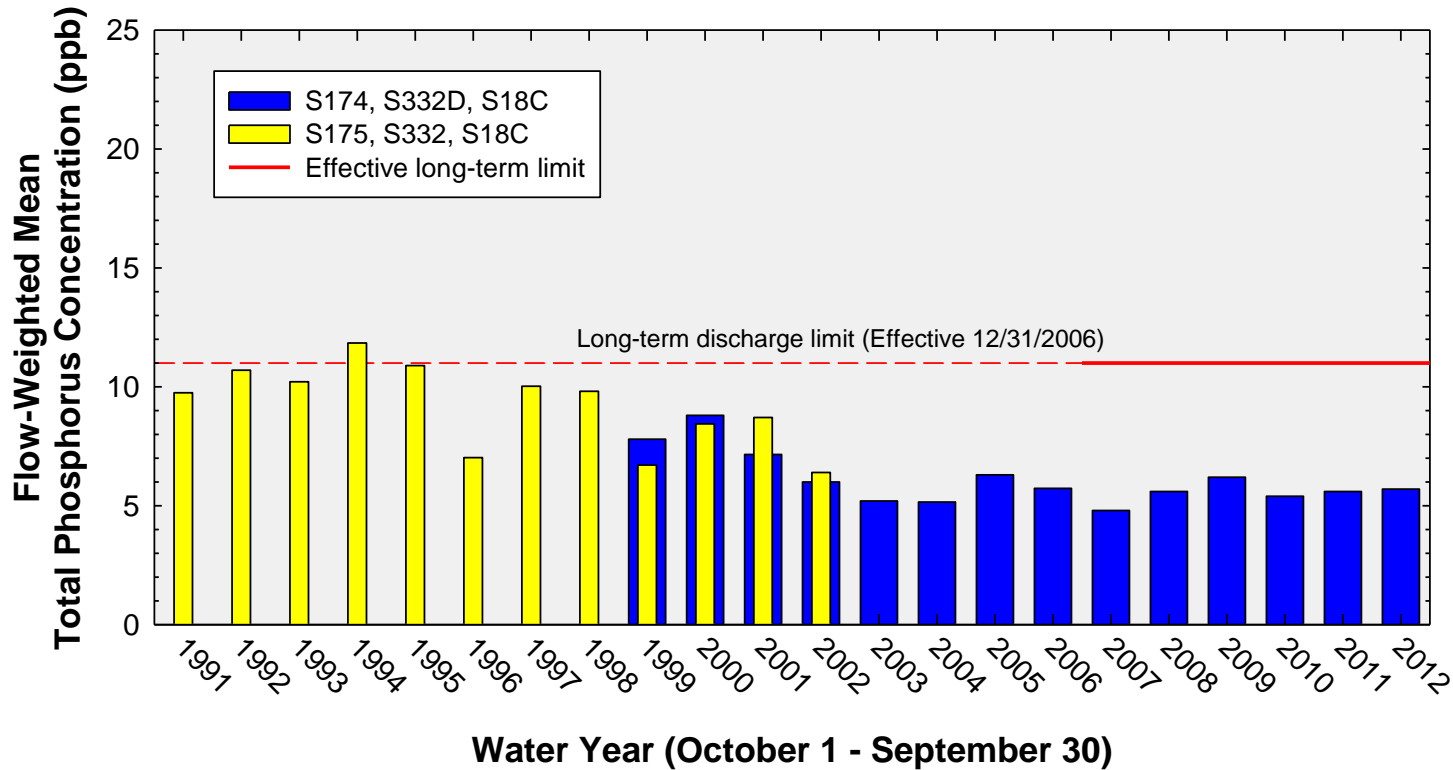
Sampling Event Flow and FWMC



Flow at Shark River Slough structures and the corresponding TP FWMCs for individual sampling events

Annual Flow-Weighted Mean Concentrations

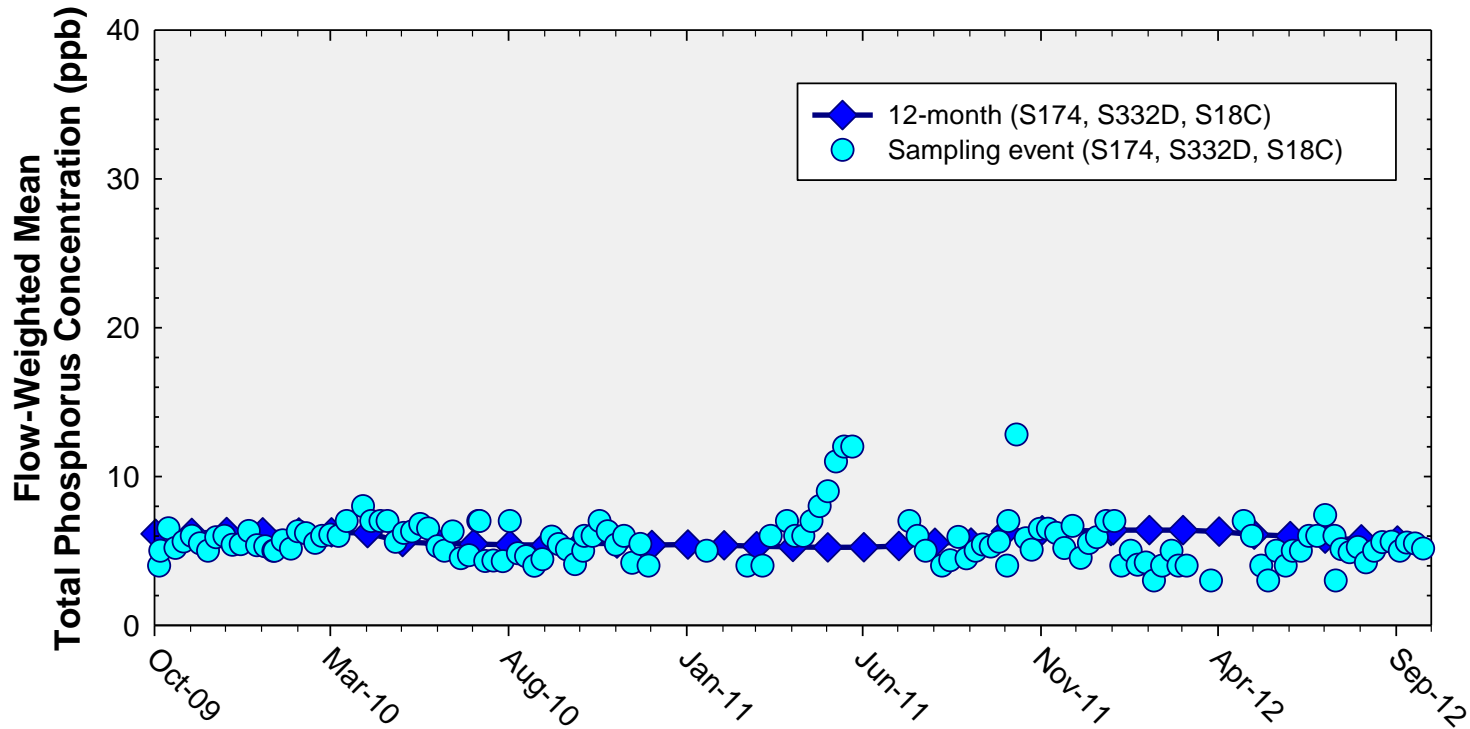
Inflows to the ENP through Taylor Slough and Coastal Basins



The 12-month FWMC at the end of each water year compared to the 11 ppb long-term TP limit

Flow-Weighted Mean Concentrations

Inflows to the ENP through Taylor Slough and Coastal Basins



The 12-month FWMC at the end of each month and the composite TP concentration for each sampling event

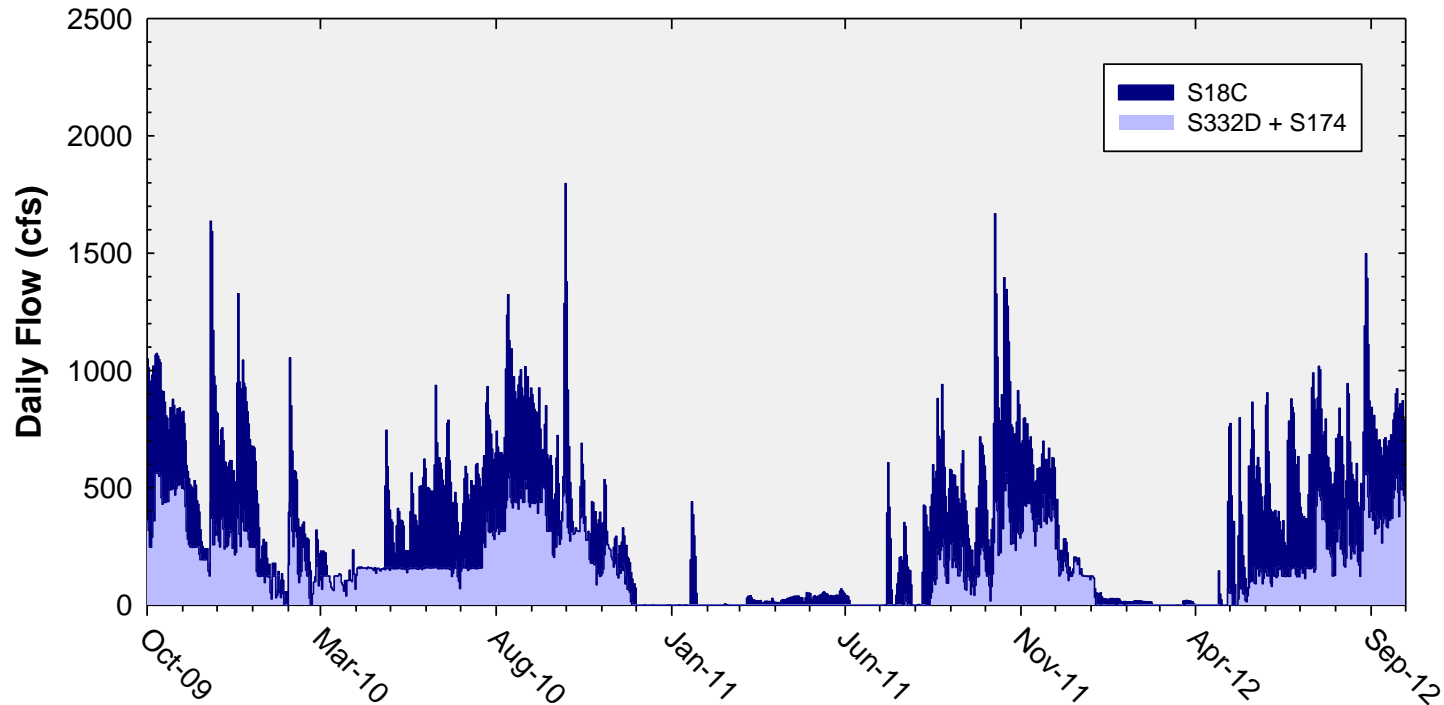
Taylor Slough and the Coastal Basins

TP Concentration Compliance Tracking

for July 2012 – September 2012

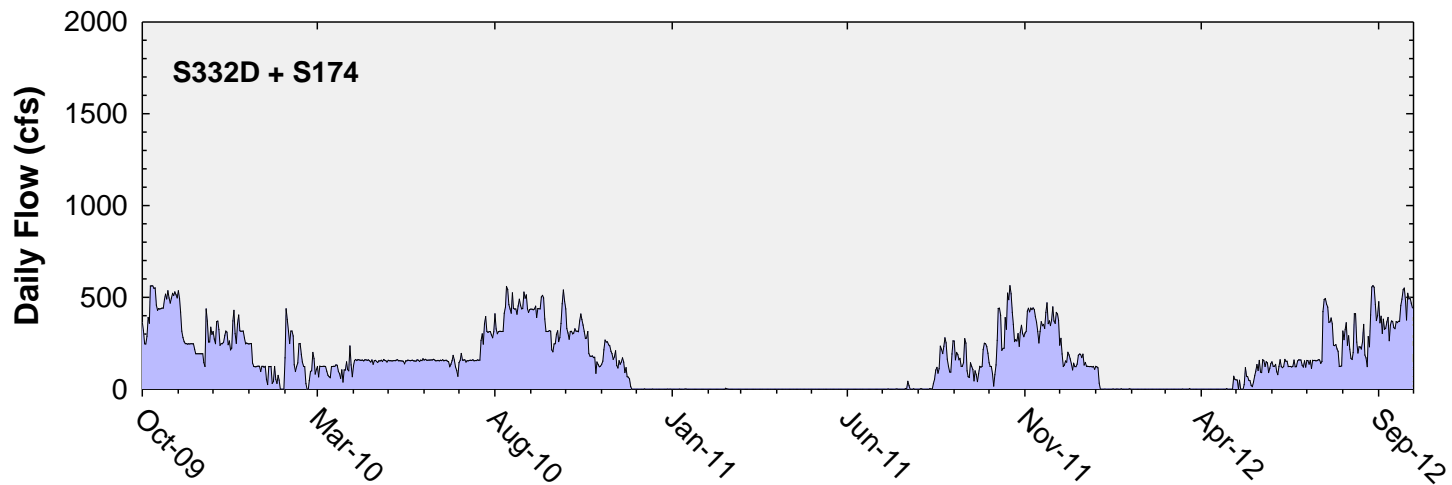
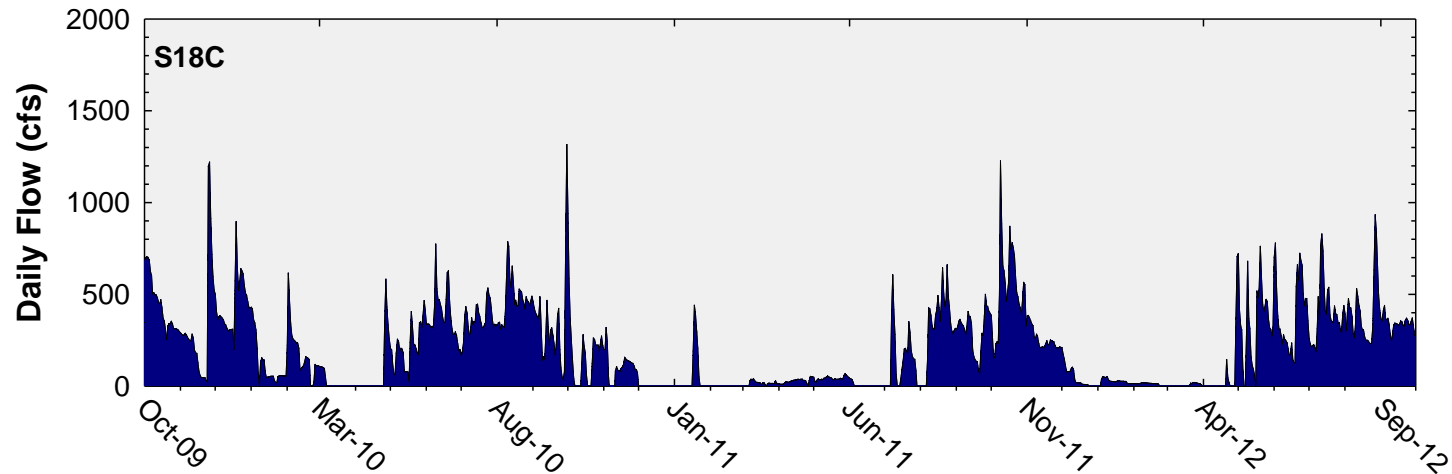
12-Month Period	Total Flow (kac-ft)	Flow-Weighted Mean TP Concentration (ppb)	Long-Term Limit (ppb) <i>Effective 12/31/2006</i>	Percent of Sampling Events Greater than 10 ppb	
				Guideline	Observed
Aug 2011 - July 2012	255.1	5.8	11.0	53.1	2.1
Sep 2011 - Aug 2012	273.0	5.8	11.0	53.1	2.0
Oct 2011 - Sep 2012	290.7	5.7	11.0	53.1	2.0

Taylor Slough and Coastal Basins Daily Flows

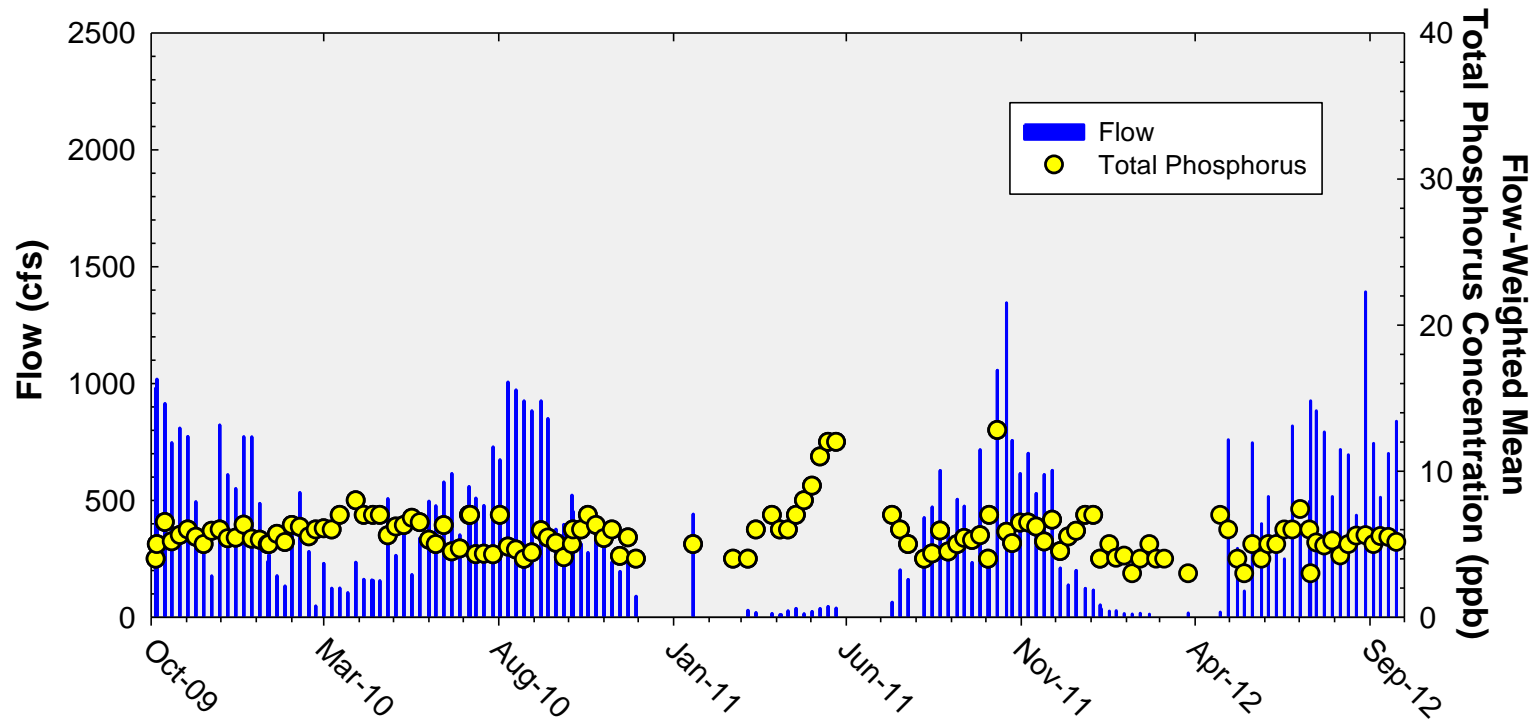


**Daily flows into Everglades National Park
through Taylor Slough and Coastal Basins**

Daily Flows at individual Taylor Slough and Coastal Basins structures into the ENP



Taylor Slough and Coastal Basins Sampling Event Flow and FWMC



Flow at Taylor Slough and Coastal Basins structures and the corresponding TP FWMCs for individual sampling events

Thank You

