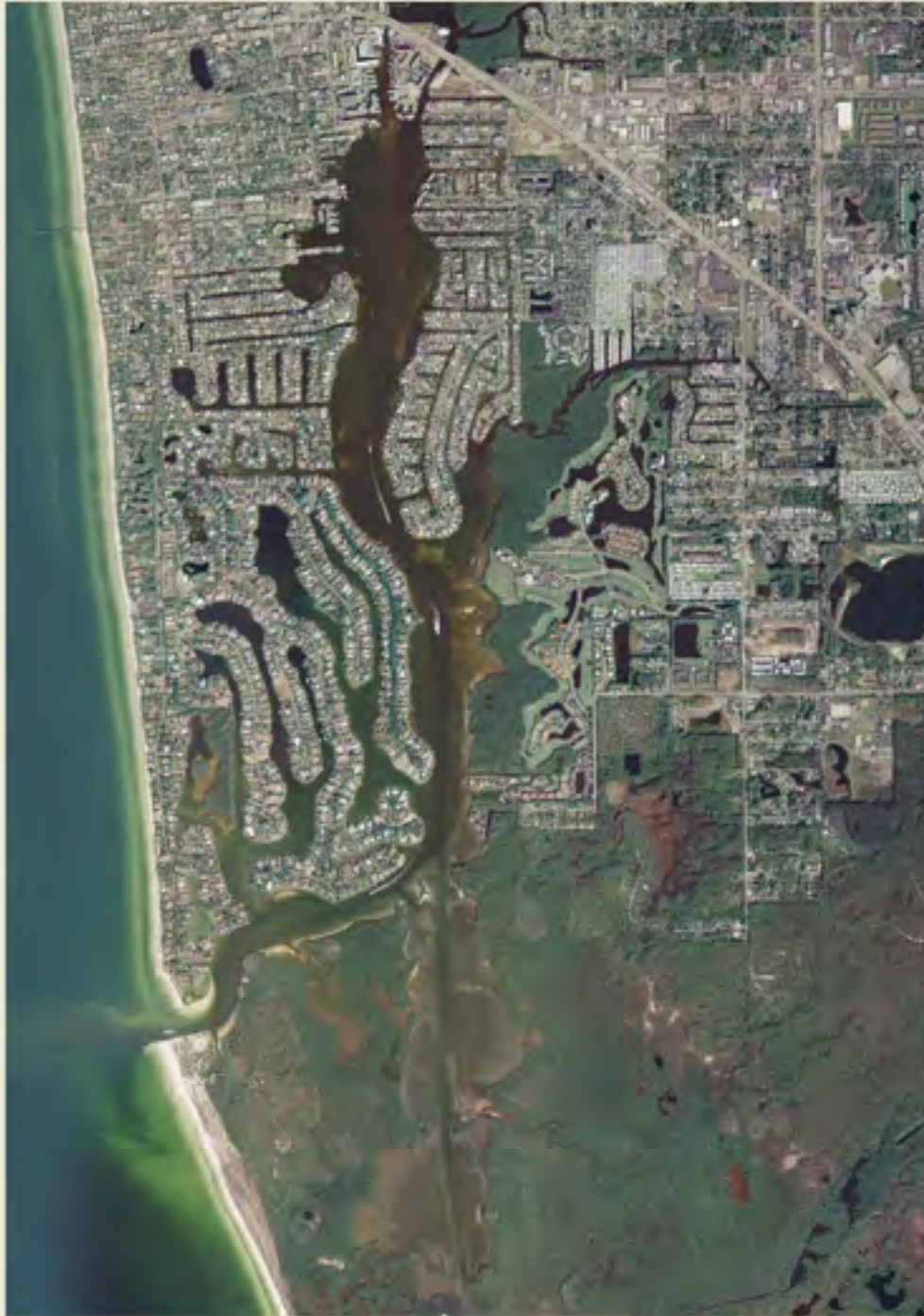


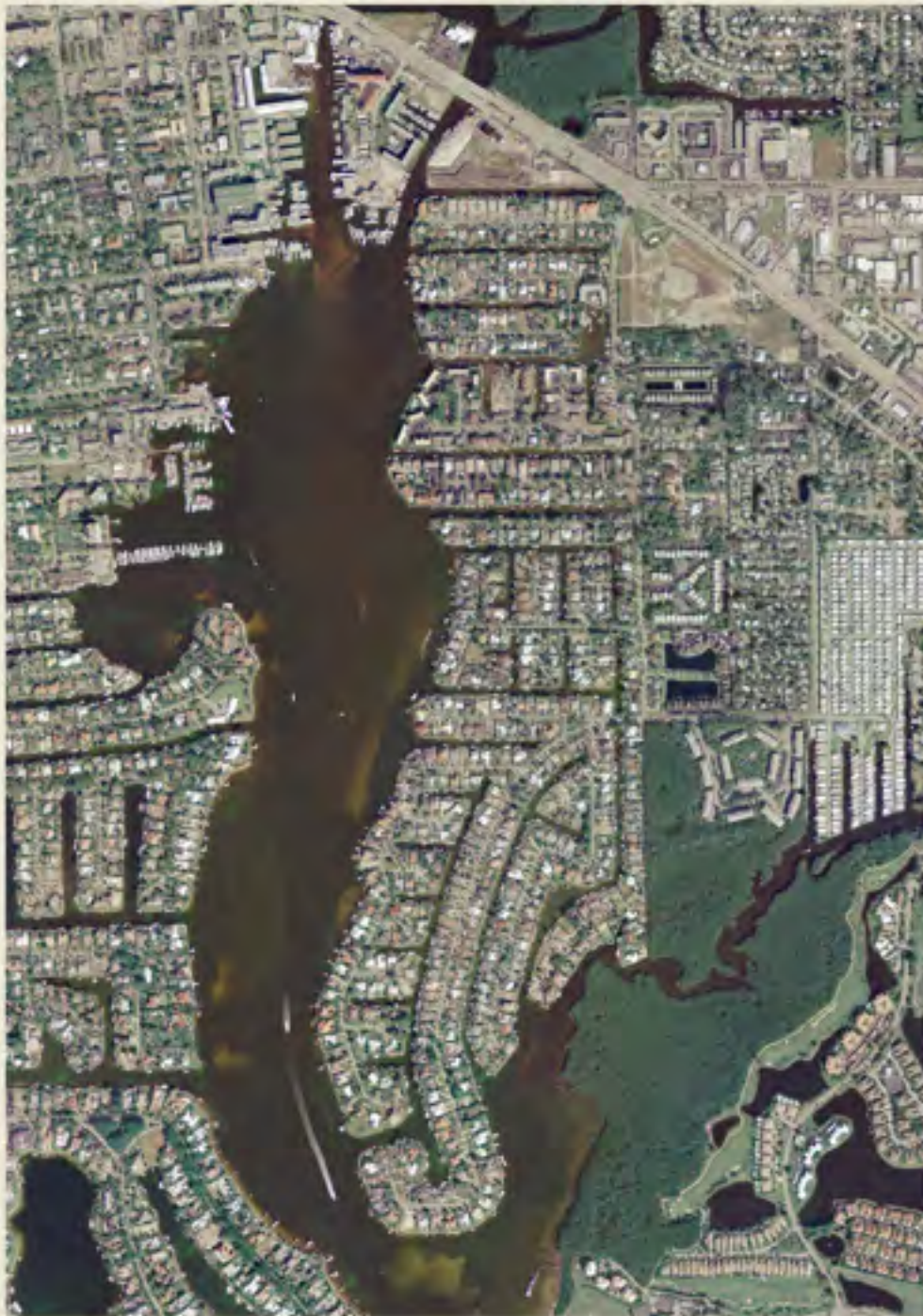
# Naples Bay and Dollar Bay 2004 True Color Aerial Photographs



0 1 2 3 4  
Kilometers

Figure 1. True color aerial photograph of study area including Naples Bay, Dollar Bay, Gordon Pass, Gordon River, Rock Creek, and Haldeman Creek.

# North Naples Bay 2004 True Color Aerial Photographs



0 0.5 1 1.5 2  
Kilometers

Figure 2. True color aerial photograph of northern Naples Bay.



# South Naples Bay 2004 True Color Aerial Photographs

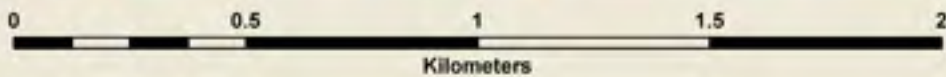


Figure 3. True color aerial photograph of southern Naples Bay.

## Dollar Bay and Gordon Pass 2004 True Color Aerial Photographs



0 0.5 1 1.5 2  
Kilometers



Figure 4. True color aerial photograph of Dollar Bay and Gordon Pass.



# Naples Bay and Dollar Bay Side Scan Sonar Mosaic

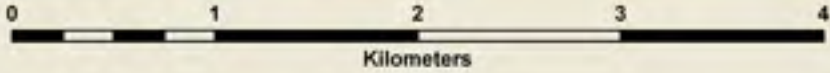
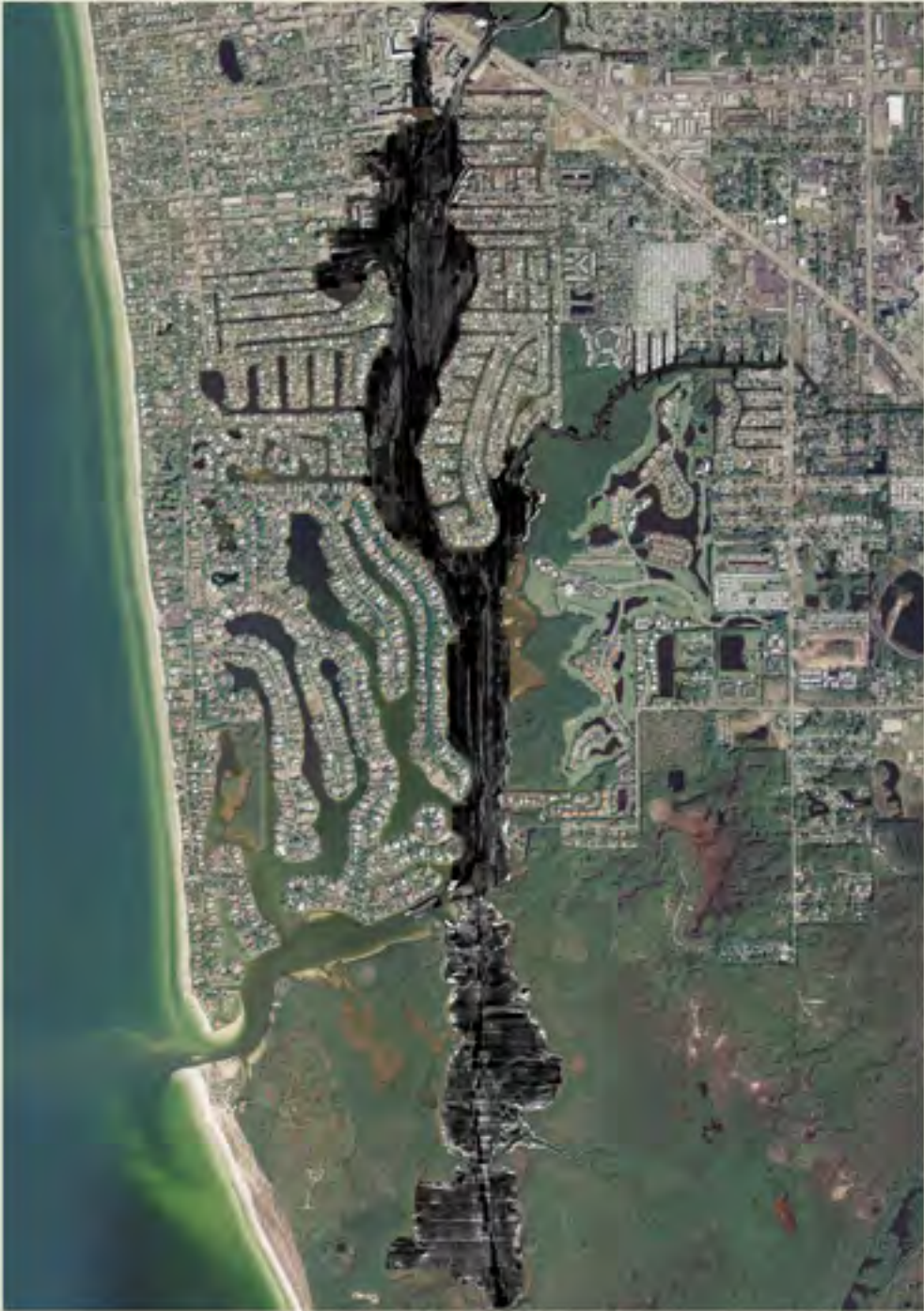


Figure 5. Side-scan sonar mosaic image for entire study region.

## North Naples Bay Side Scan Sonar Mosaic



Figure 6. Side-scan sonar mosaic image for northern Naples Bay.



# South Naples Bay Side Scan Sonar Mosaic

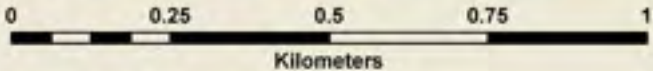


Figure 7. Side-scan sonar mosaic image for southern Naples Bay.

## Dollar Bay Side Scan Sonar Mosaic

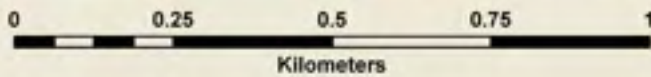


Figure 8. Side-scan sonar mosaic image for Dollar Bay.



# Gordon River and Rock Creek Side Scan Sonar Mosaic



Figure 9. Side-scan sonar mosaic image for Gordon River and Rock Creek.

## Gordon River and Rock Creek CHIRP Seismic Track Lines



Figure 10. Map showing position of CHIRP seismic tracks within Gordon River and Rock Creek. Arrows denote the direction of track portrayed in seismic profiles.



# North Naples Bay CHIRP Seismic Track Lines



Figure 11. Map showing position of CHIRP seismic tracks within northern Naples Bay. Arrows denote the direction of track portrayed in seismic profiles.



## South Naples Bay CHIRP Seismic Track Lines

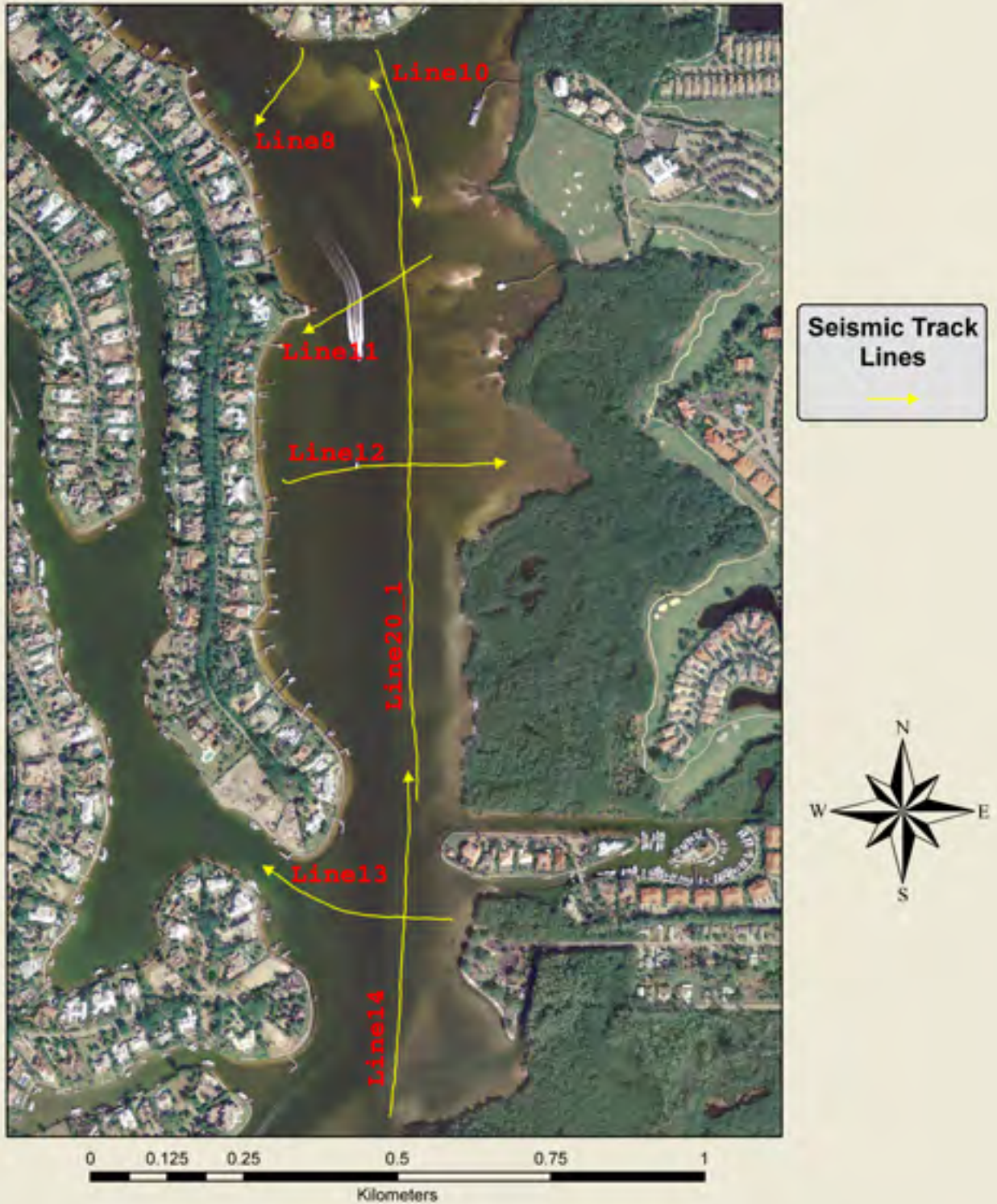


Figure 12. Map showing position of CHIRP seismic tracks within southern Naples Bay. Arrows denote the direction of track portrayed in seismic profiles.



## Dollar Bay CHIRP Seismic Track Lines



Figure 13. Map showing position of CHIRP seismic tracks within Dollar Bay. Arrows denote the direction of track portrayed in seismic profiles.

## Haldeman Creek Area CHIRP Seismic Track Lines



Figure 14. Map showing position of CHIRP seismic tracks within Haldeman Creek. Arrows denote the direction of track portrayed in seismic profiles.



# Gordon Pass CHIRP Seismic Track Lines



Figure 15. Map showing position of CHIRP seismic tracks within Gordon Pass. Arrows denote the direction of track portrayed in seismic profiles.

## Gordon River and Rock Creek Grain Size Data

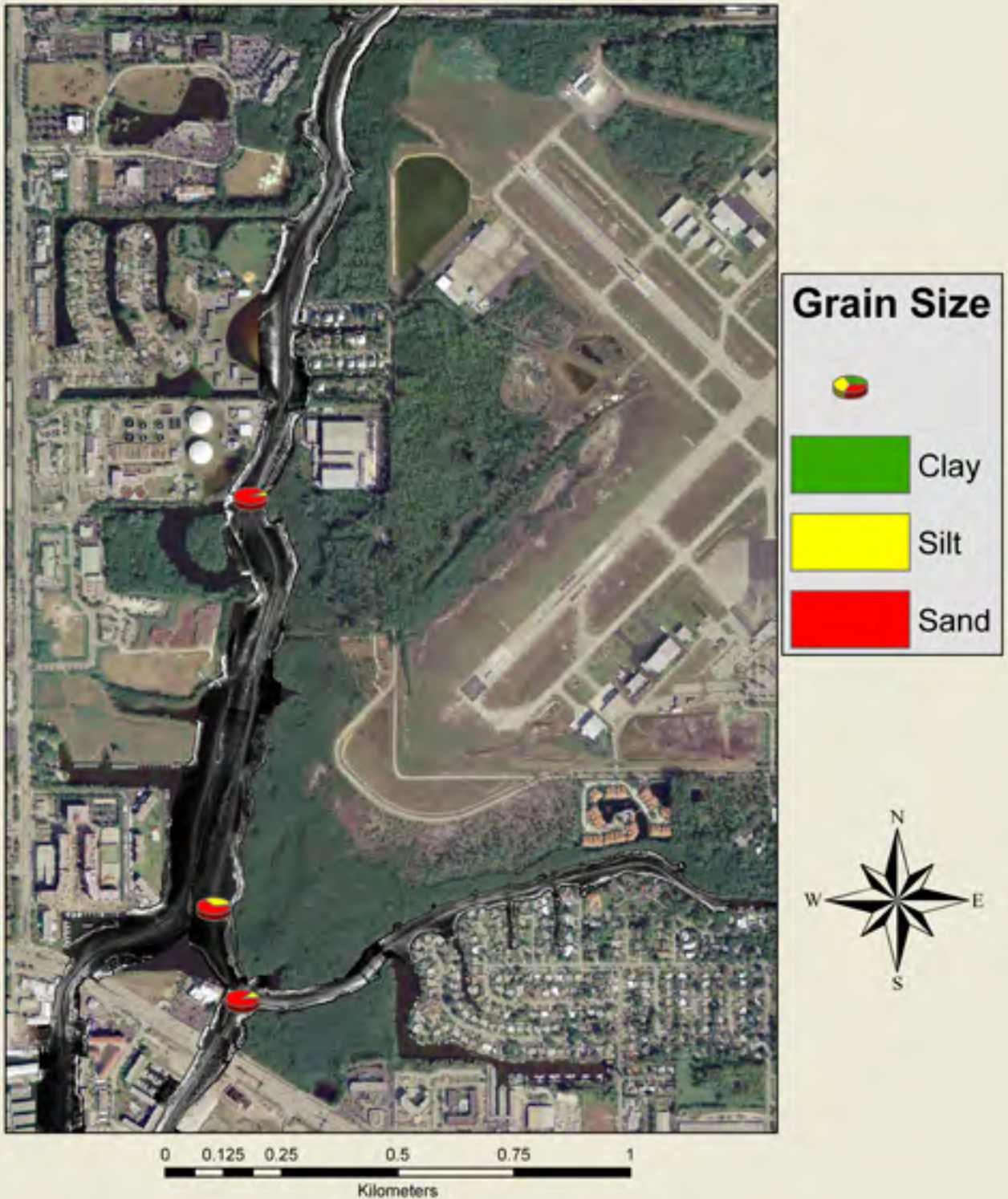


Figure 16. Map showing position of sediment samples taken from the Gordon River and Rock Creek. Pie diagrams positioned at sites; wedge widths denote percent clay, silt, and sand.



# Northern Naples Bay Grain Size Data

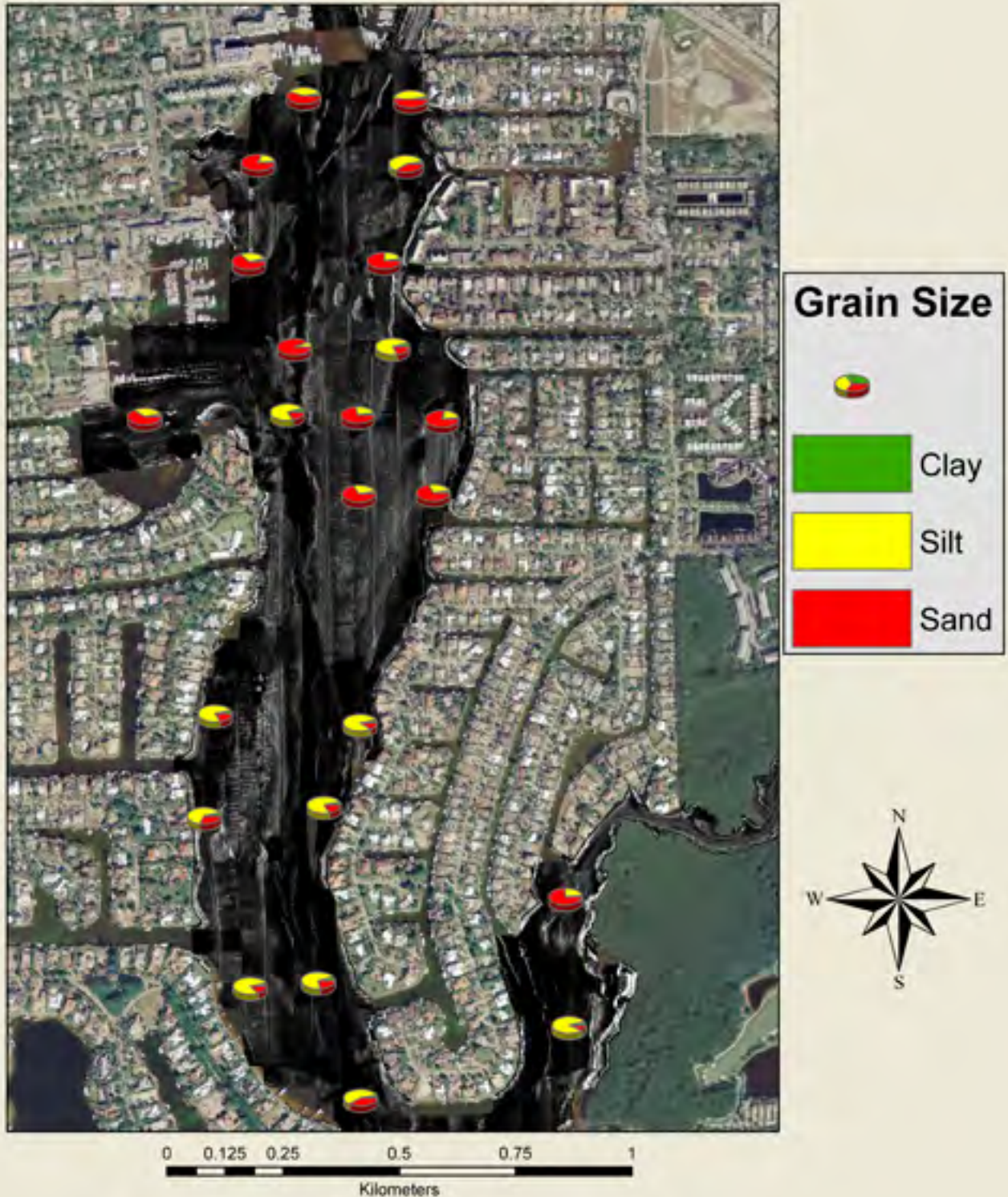


Figure 17. Map showing position of sediment samples taken from the northern Naples Bay and Haldeman Creek. Pie diagrams positioned at sites; wedge widths denote percent clay, silt, and sand.



## Southern Naples Bay Grain Size Data

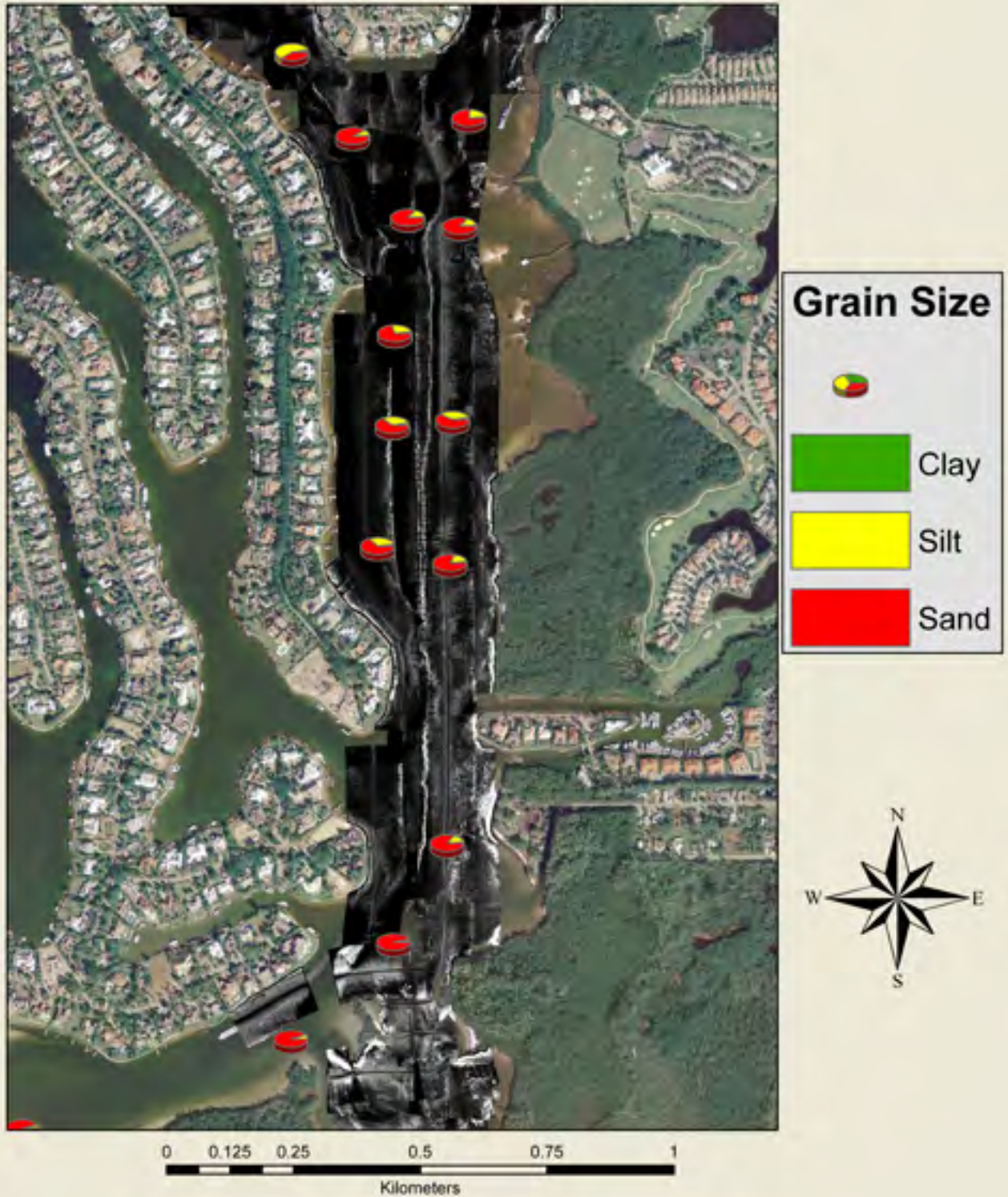


Figure 18. Map showing position of sediment samples taken from southern Naples Bay. Pie diagrams positioned at sites; wedge widths denote percent clay, silt, and sand.



# Gordon Pass Grain Size Data

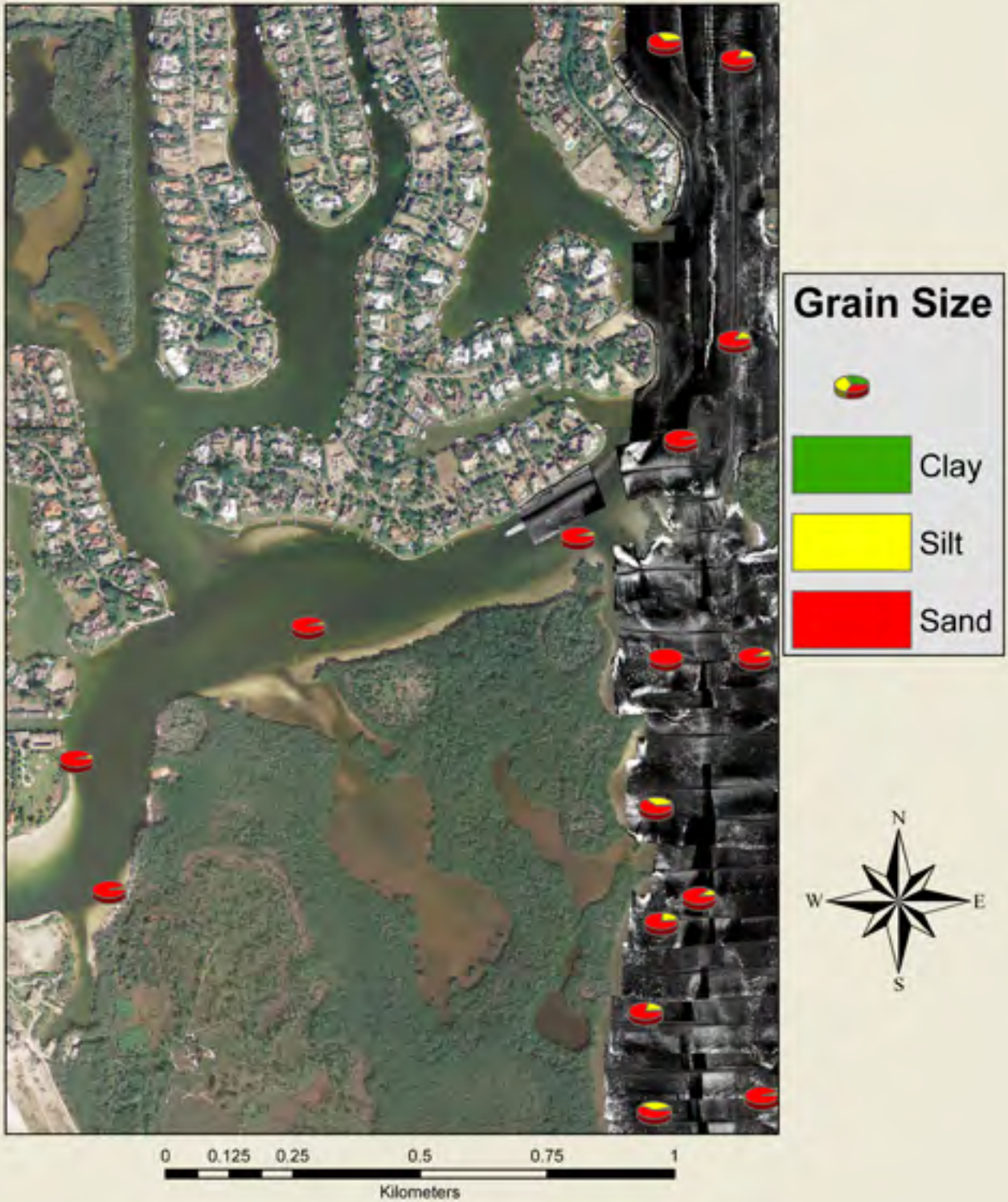


Figure 19. Map showing position of sediment samples taken from Gordon Pass. Pie diagrams positioned at sites; wedge widths denote percent clay, silt, and sand.

## Dollar Bay Grain Size Data

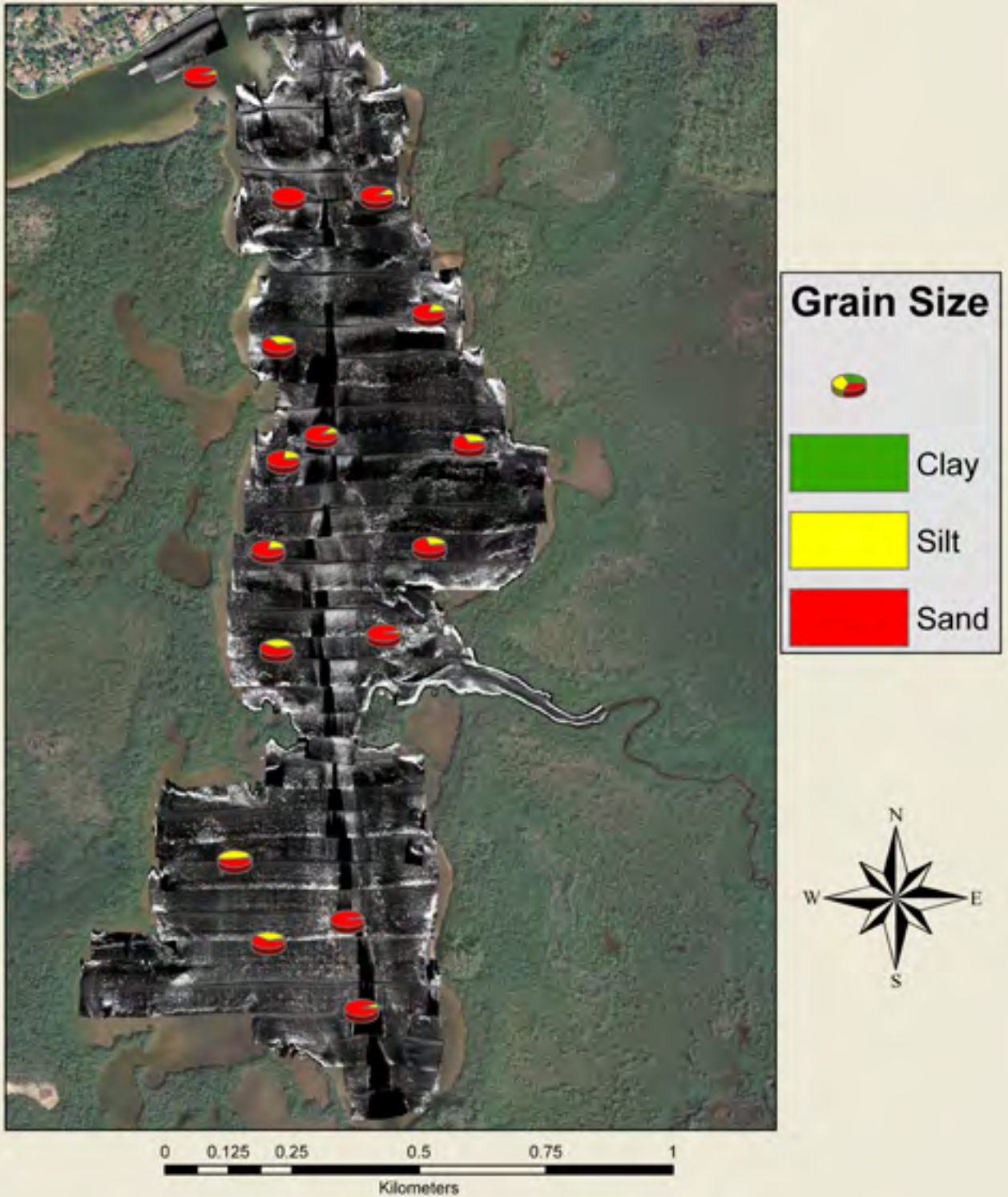


Figure 20. Map showing position of sediment samples taken from Dollar Bay. Pie diagrams positioned at sites; wedge widths denote percent clay, silt, and sand.



# North Naples Bay Side Scan Sonar Mosaic with Substrate Interpretations

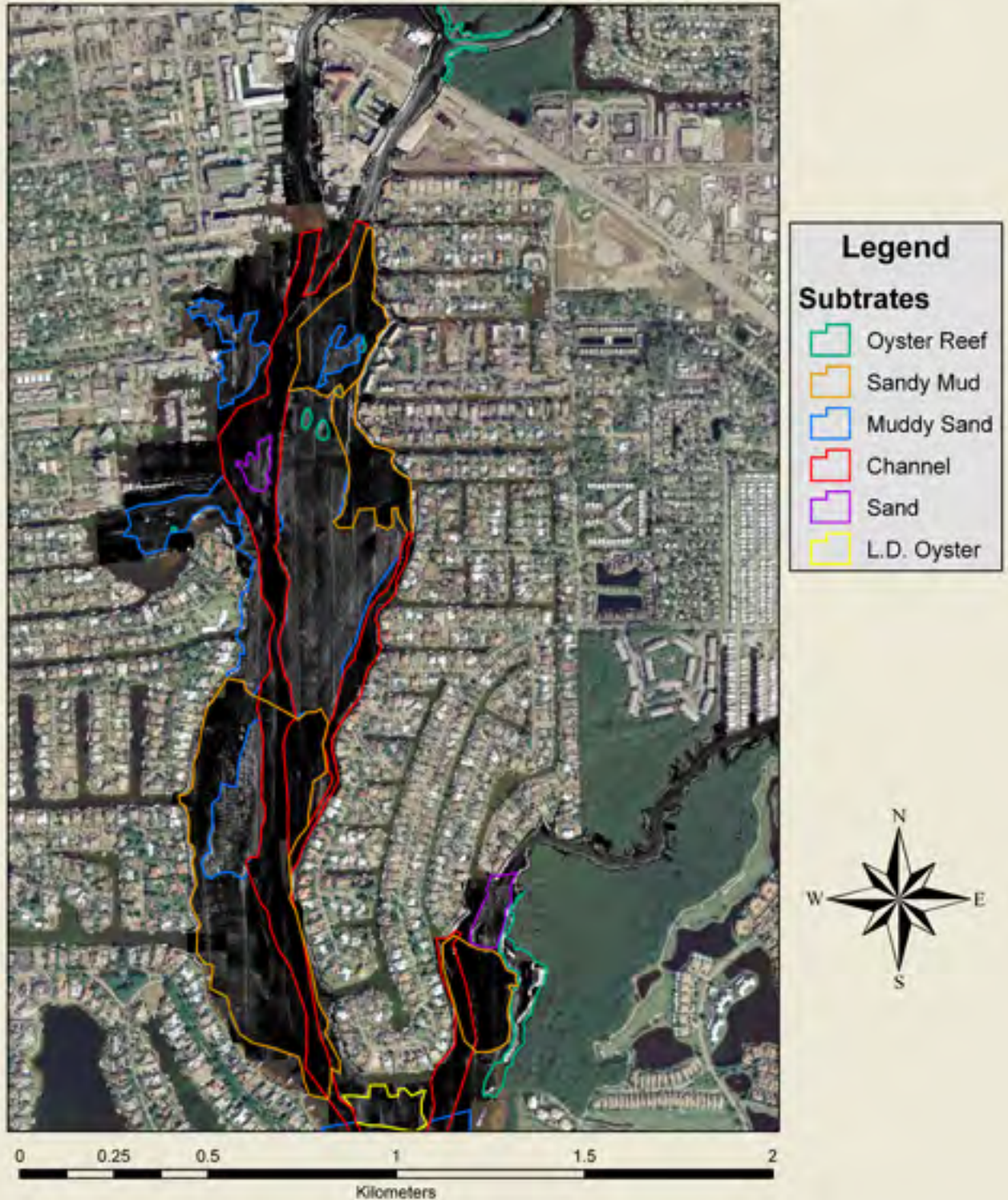


Figure 21. Side-scan sonar mosaic for northern Naples Bay and Haldeman Creek showing the spatial distribution of the 6 substrate types.



## Northern Naples Bay Side Scan Sonar Mosaic with Substrate Interpretations

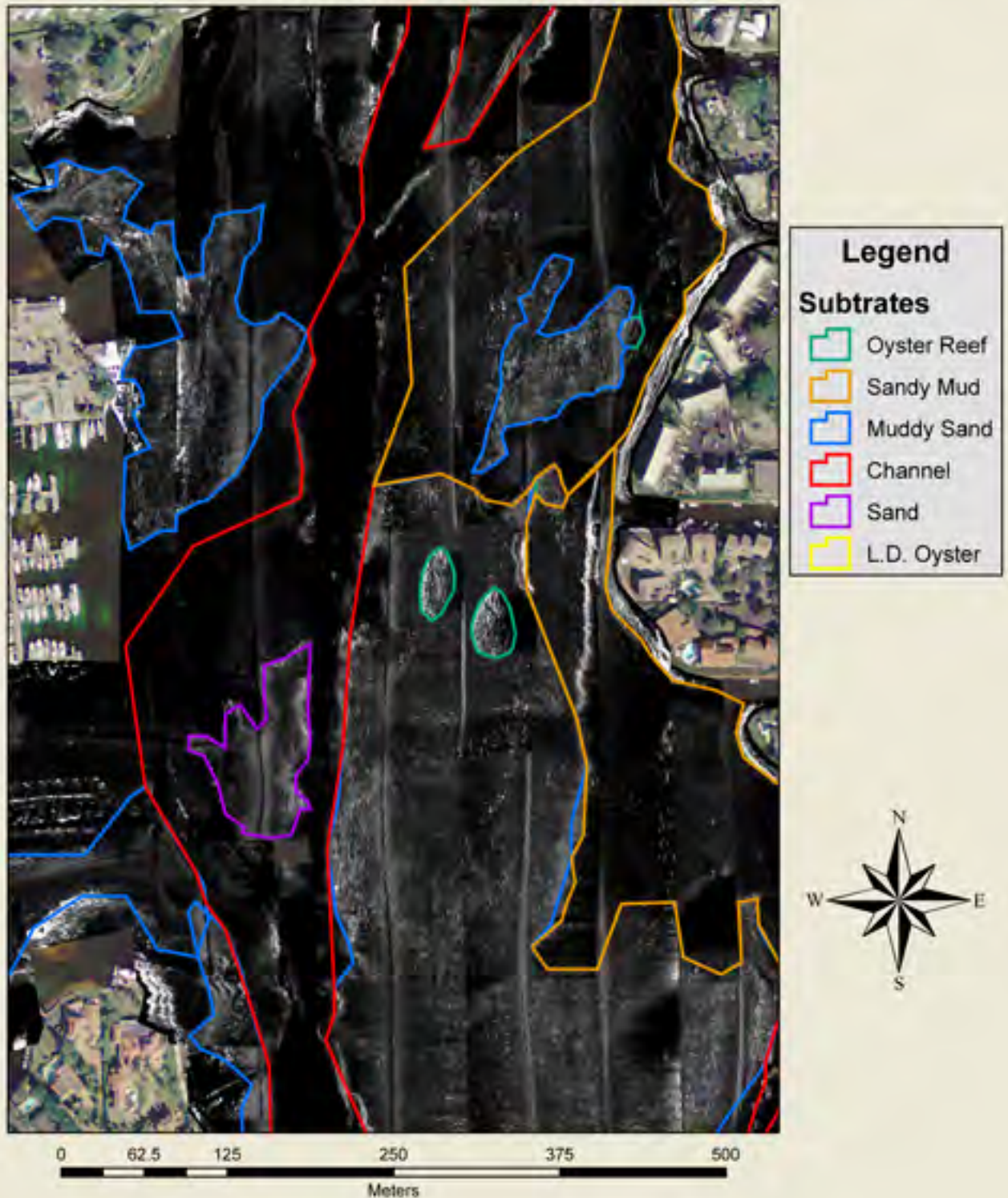


Figure 22. Side-scan sonar mosaic for small region of northern Naples Bay with subtidal oyster reefs. The spatial distribution of the 6 substrate types is mapped.



## South Naples Bay Side Scan Sonar Mosaic with Substrate Interpretations

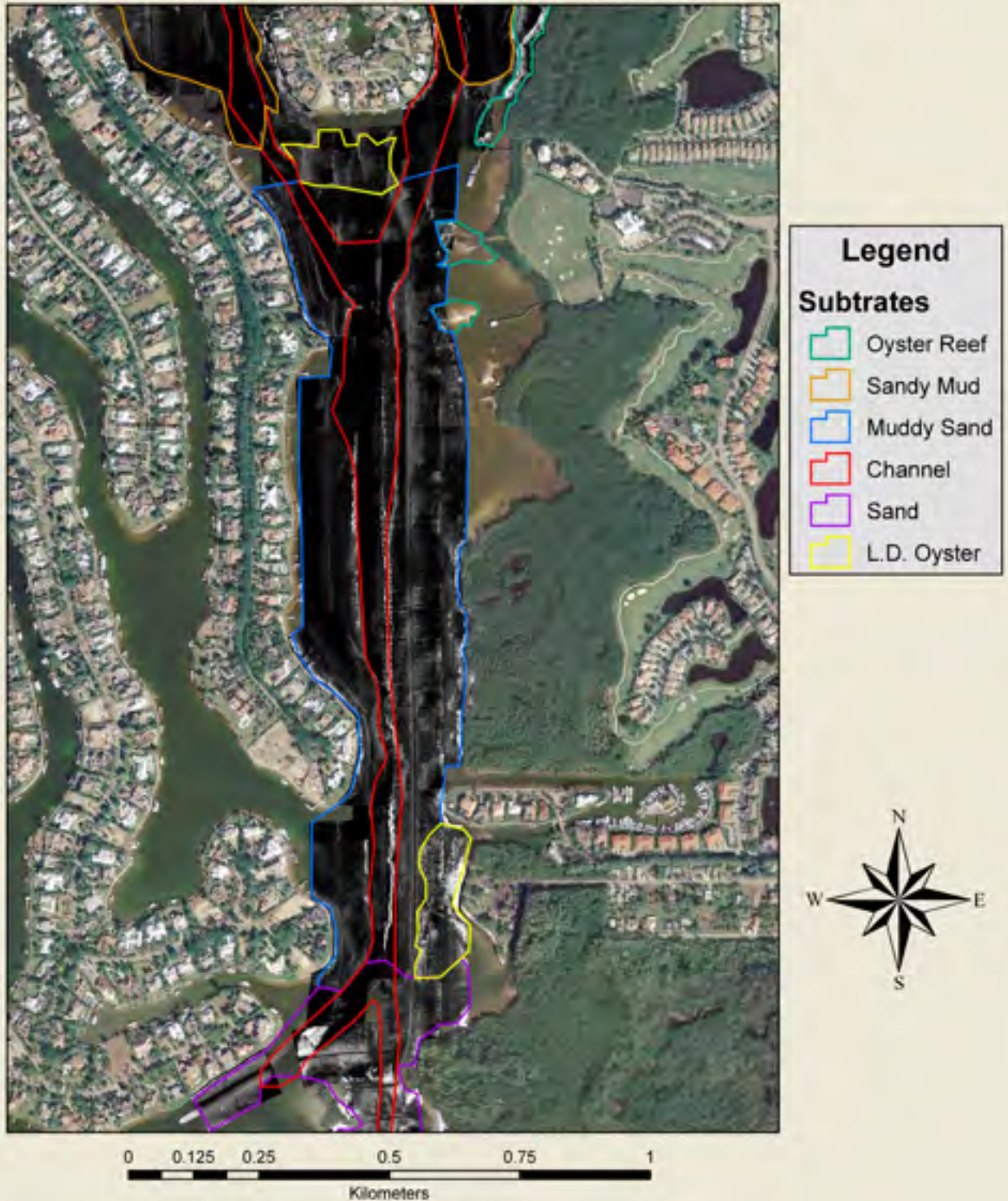


Figure 23. Side-scan sonar mosaic for southern Naples Bay and lower Haldeman Creek showing the spatial distribution of the 6 substrate types.



# Mouth of Haldeman Creek Side Scan Sonar Mosaic with Substrate Interpretations

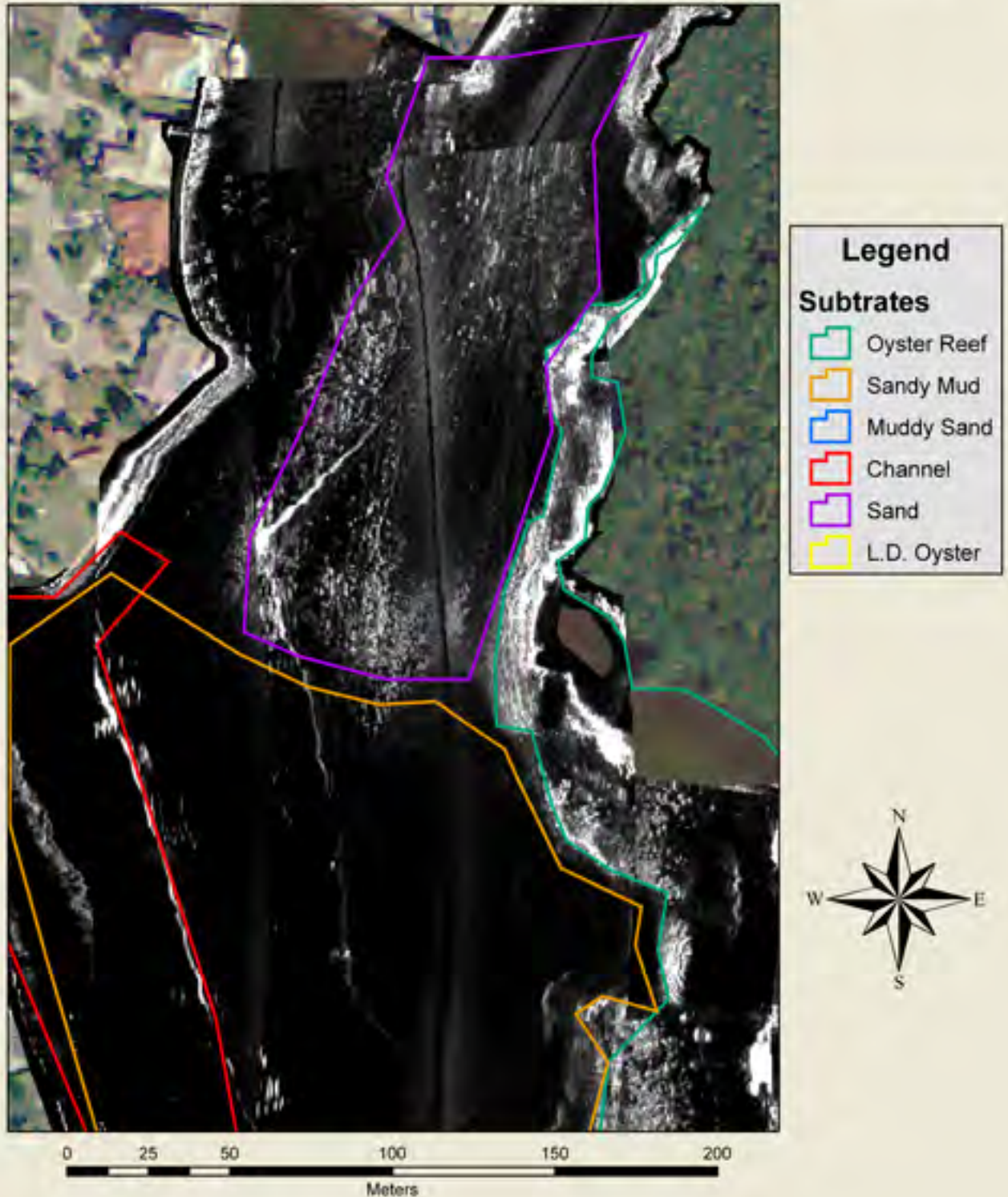


Figure 24. Side-scan sonar mosaic for the mouth of Haldeman Creek showing the spatial distribution of the 6 substrate types.



# Southern Naples Bay Side Scan Sonar Mosaic with Substrate Interpretations



Figure 25. Side-scan sonar mosaic for the region offshore of Winstar, south of Haldeman Creek's mouth, showing the spatial distribution of the 6 substrate types.

# Confluence of Gordon Pass, Naples Bay, and Dollar Bay with Substrate Interpretations

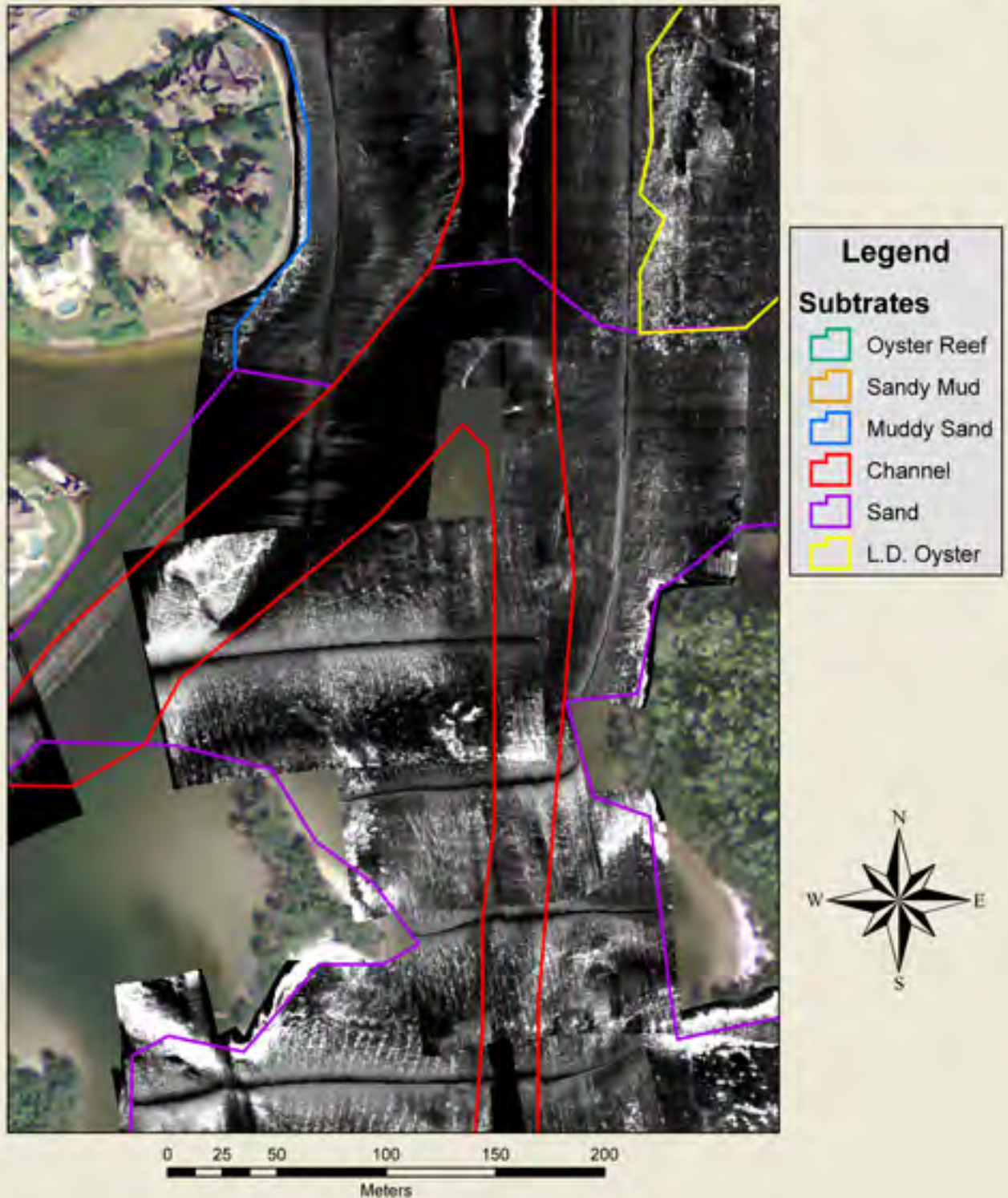


Figure 26. Side-scan sonar mosaic for the confluence of Gordon Pass, Naples Bay, and Dollar Bay showing the spatial distribution of the 6 substrate types.



## Dollar Bay Side Scan Sonar Mosaic with Substrate Interpretations

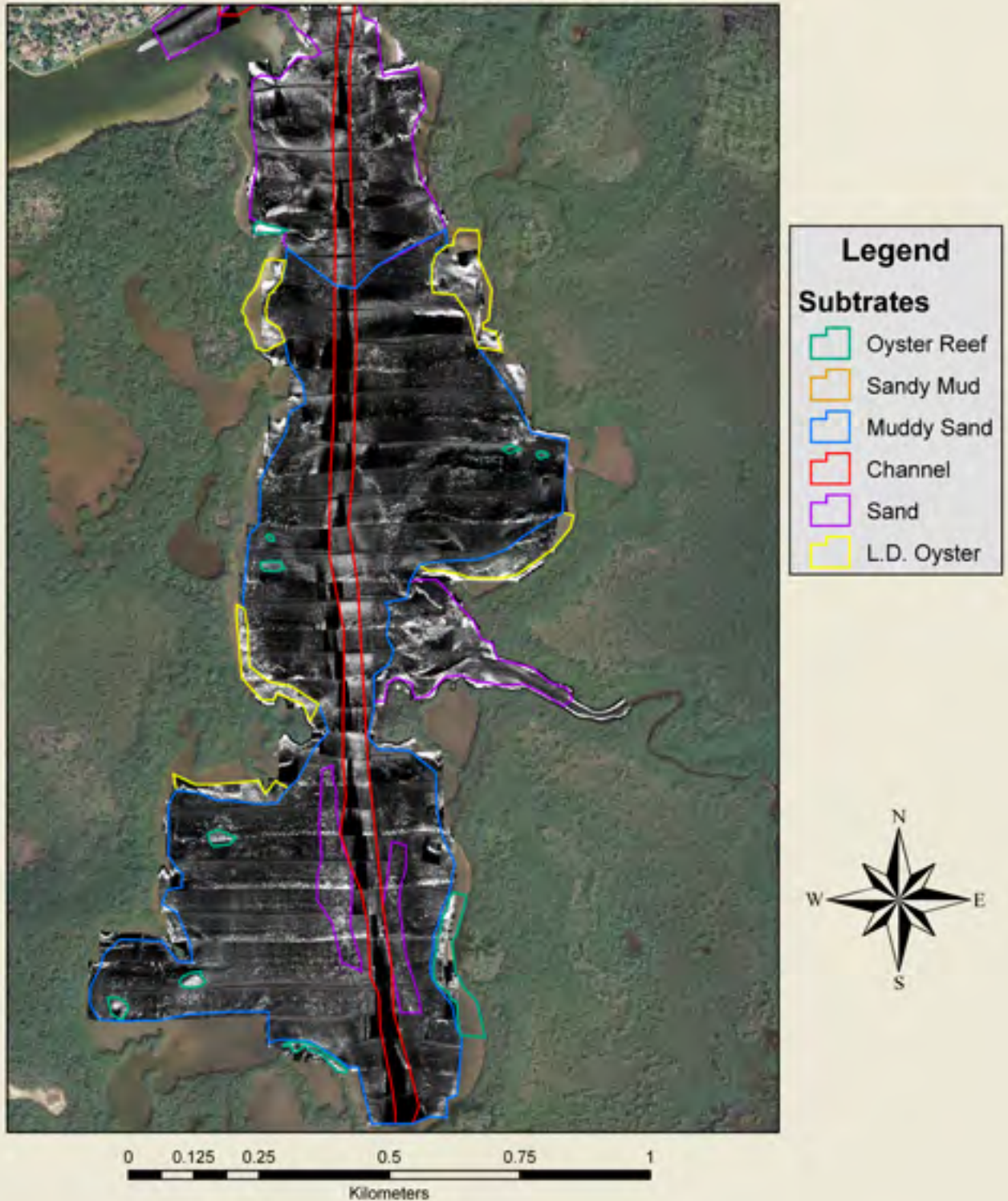


Figure 27. Side-scan sonar mosaic for Dollar Bay showing the spatial distribution of the 6 substrate types.

# Northern Dollar Bay Side Scan Sonar Mosaic with Substrate Interpretations

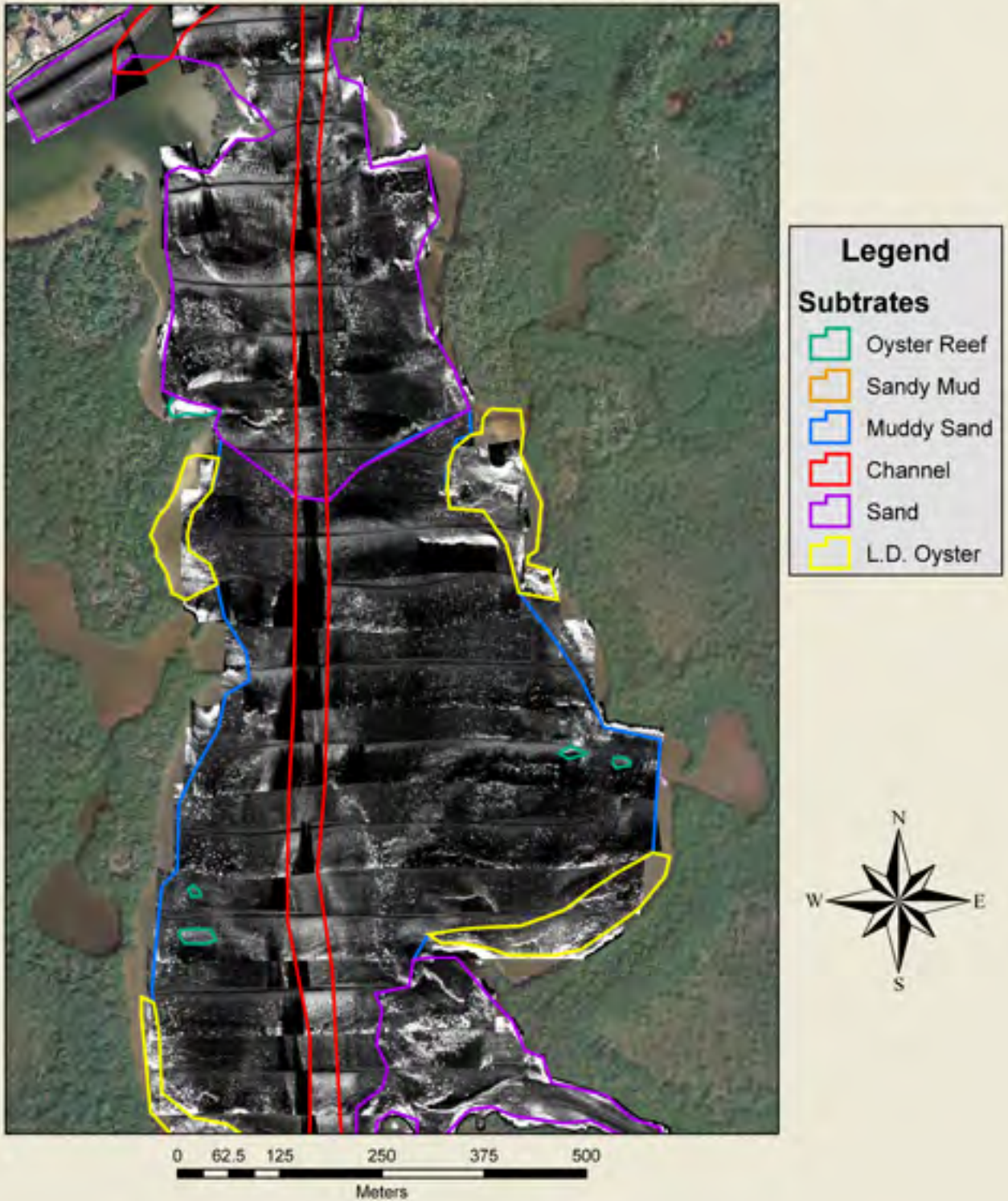


Figure 28. Side-scan sonar mosaic for northern Dollar Bay showing the spatial distribution of the 6 substrate types.



## Southern Dollar Bay Side Scan Sonar Mosaic with Substrate Interpretations

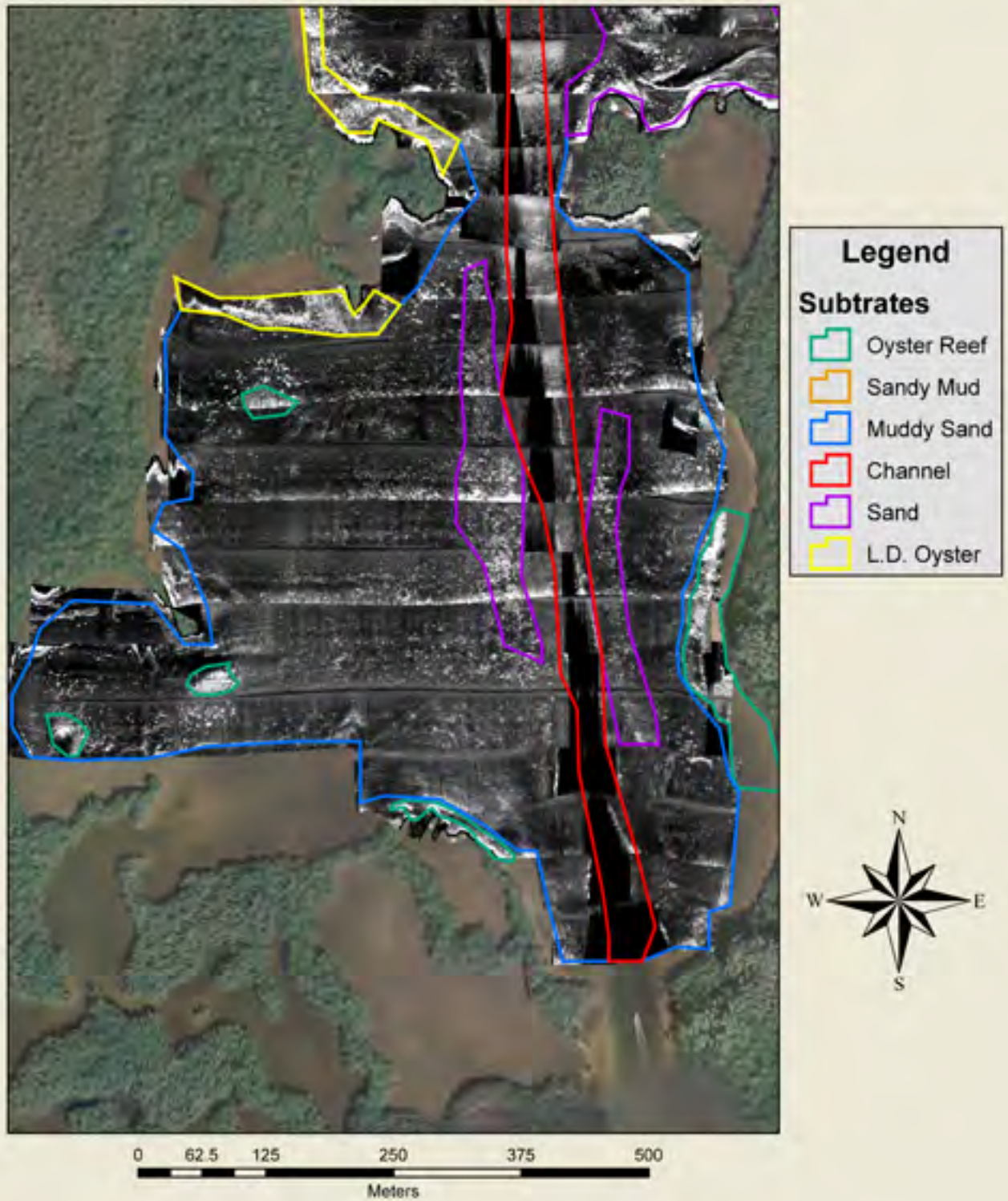


Figure 29. Side-scan sonar mosaic for southern Dollar Bay showing the spatial distribution of the 6 substrate types.

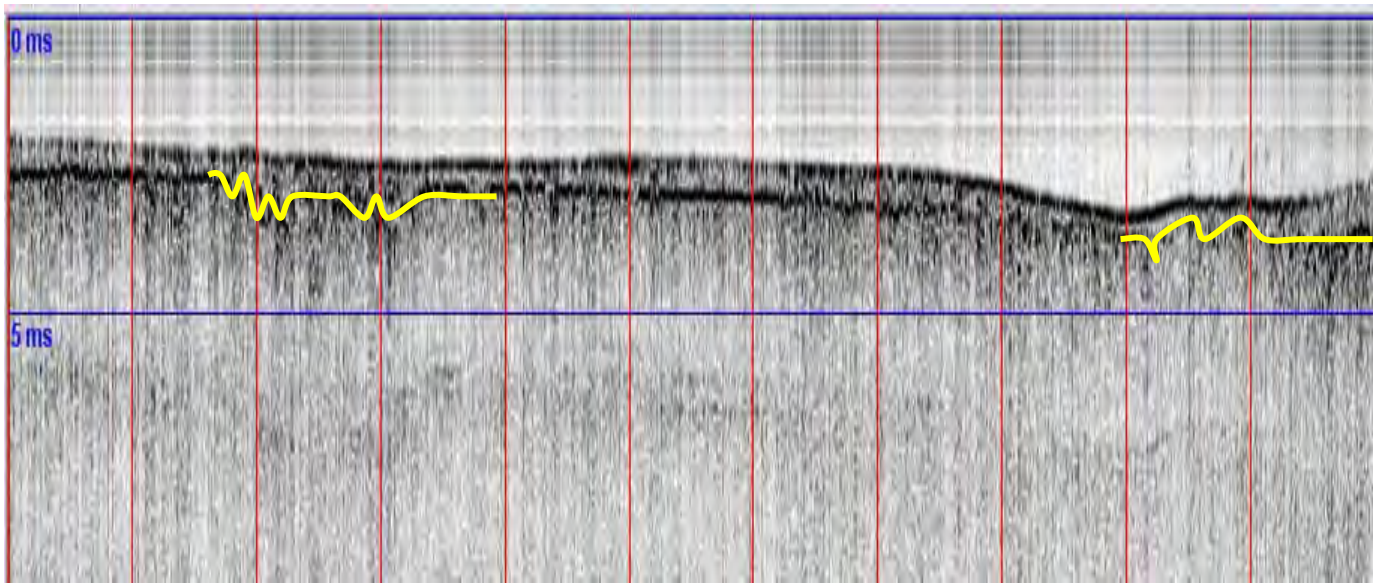


# Gordon River and Rock Creek Side Scan Sonar Mosaic with Substrate Interpretations

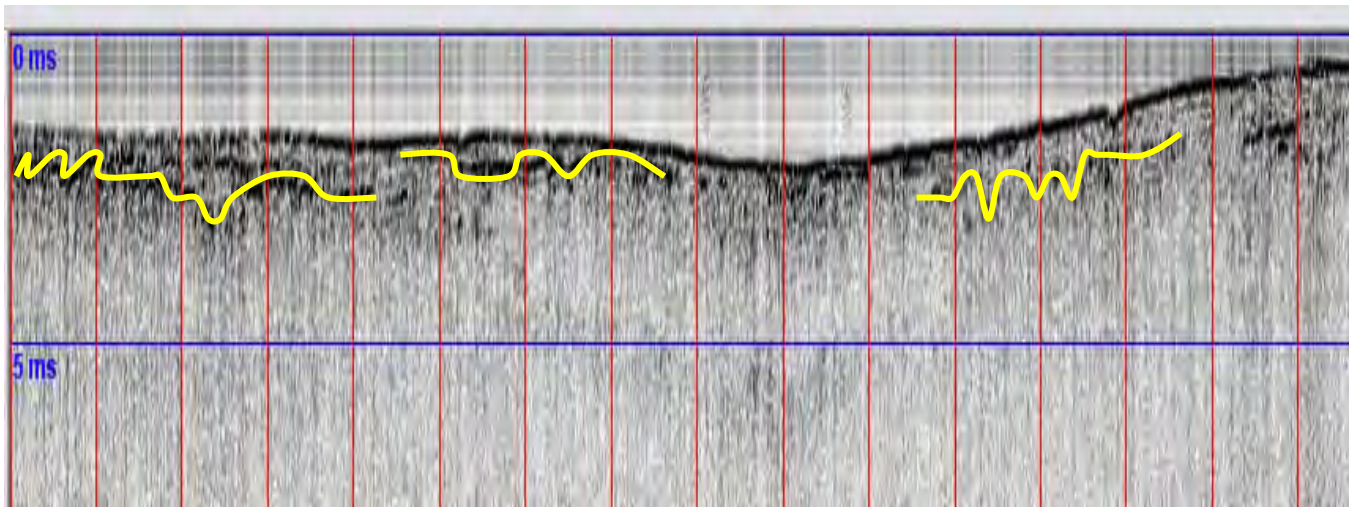


Figure 30. Side-scan sonar mosaic for Gordon River and Rock Creek showing the spatial distribution of the 6 substrate types.





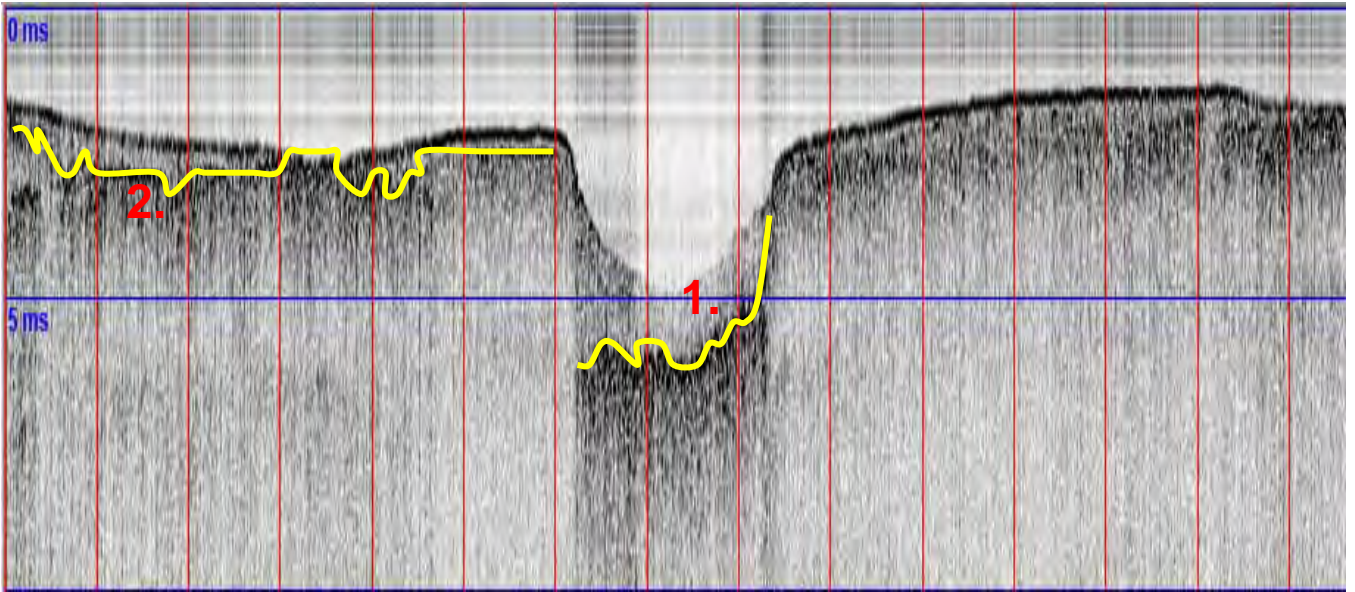
Line 1, Gordon River (0-275m; 25m spacing)



Line 2, Gordon River (0-150m; 10m spacing)

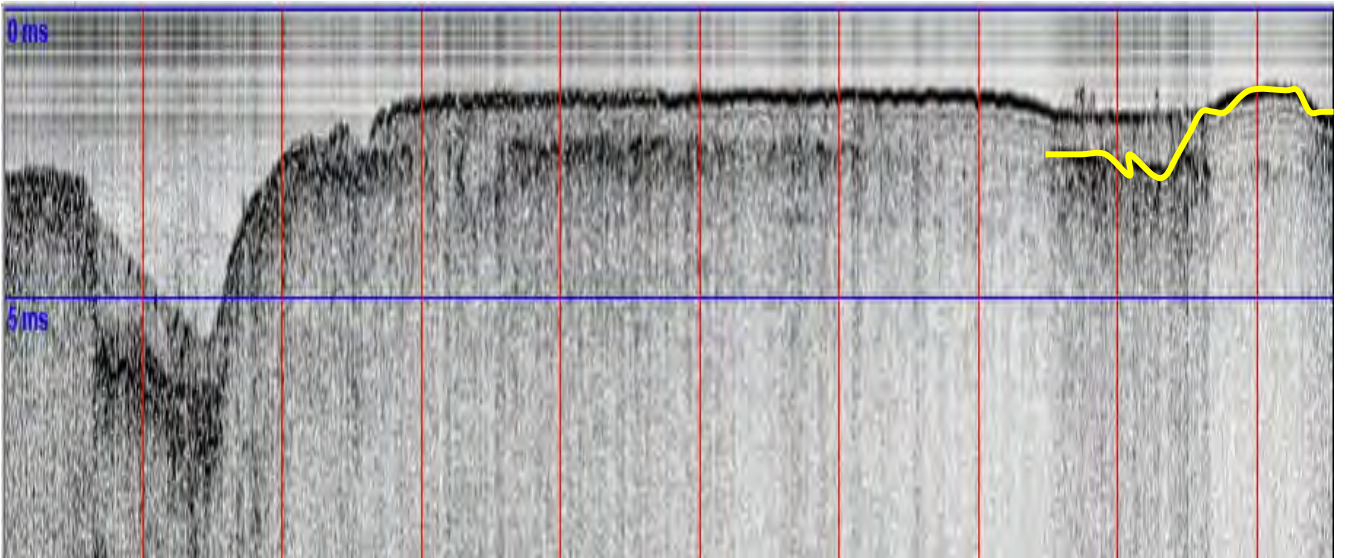
Ravinement surfaces below the sediments within the Gordon River. Probably represent bedrock of an old topography.

Figure 31. Seismic CHIRP profiles for Lines 1 & 2 from the Gordon River.



### Line 3, Northern end of north Naples Bay (0-350m; 25m spacing)

1. Dredged channel surface with more recent channel fill above.
2. Ravinement surface of consolidated sediment or bedrock.

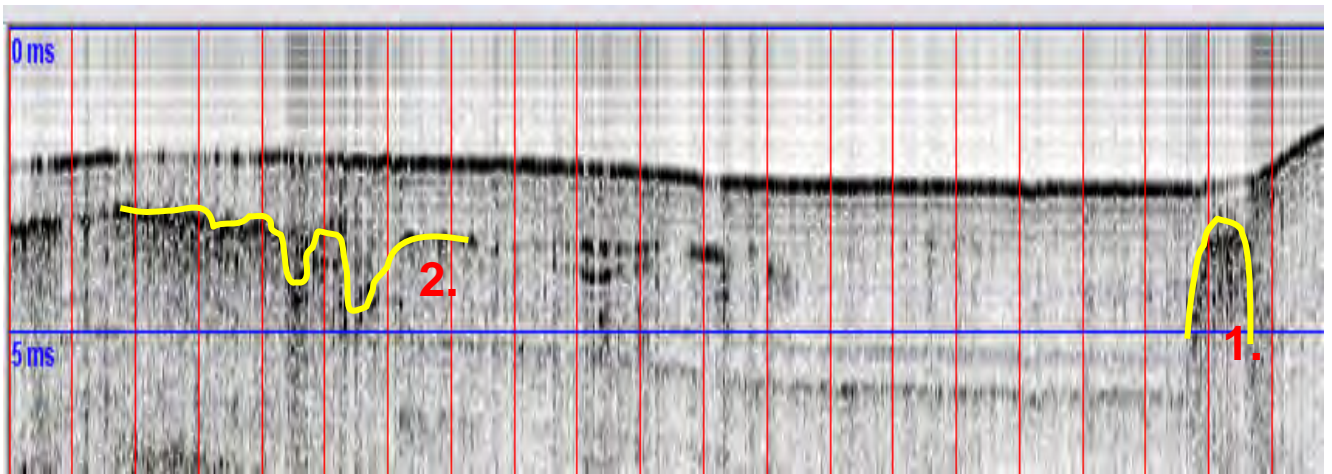


### Line 5, Northern end of north Naples Bay (400-800m)

Oyster reef founded on a bedrock or consolidated sediment surface in the shallow sub-bottom.

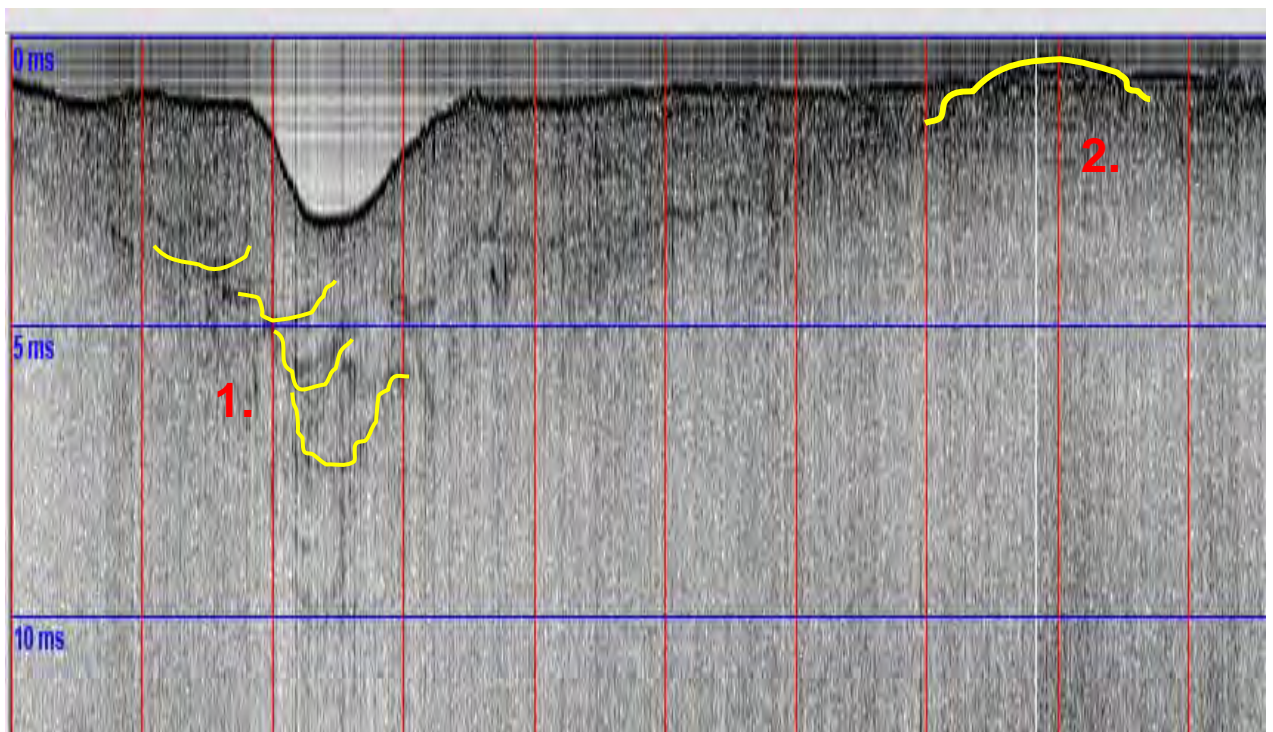
Figure 32. Seismic CHIRP profiles for Lines 3 & 5 from northern Naples Bay.





### Line 8\_1, Mouth of Haldeman Creek (0-200m; 10m spacing)

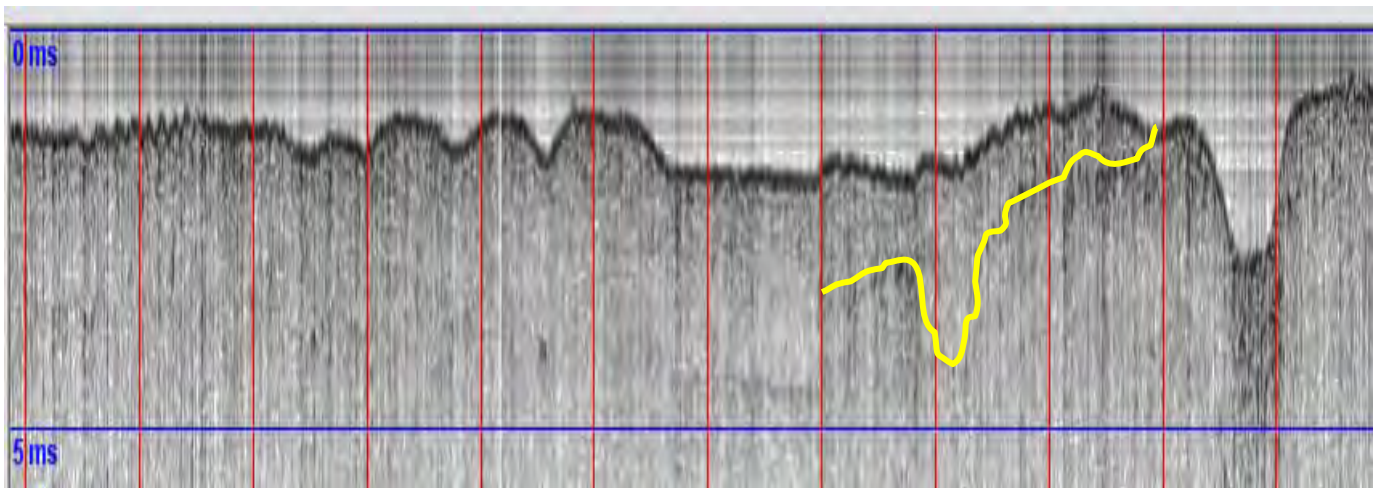
1. Buried oyster reef.
2. Ravinement surface with channels.



### Line 17, Dollar Bay (0-450m)

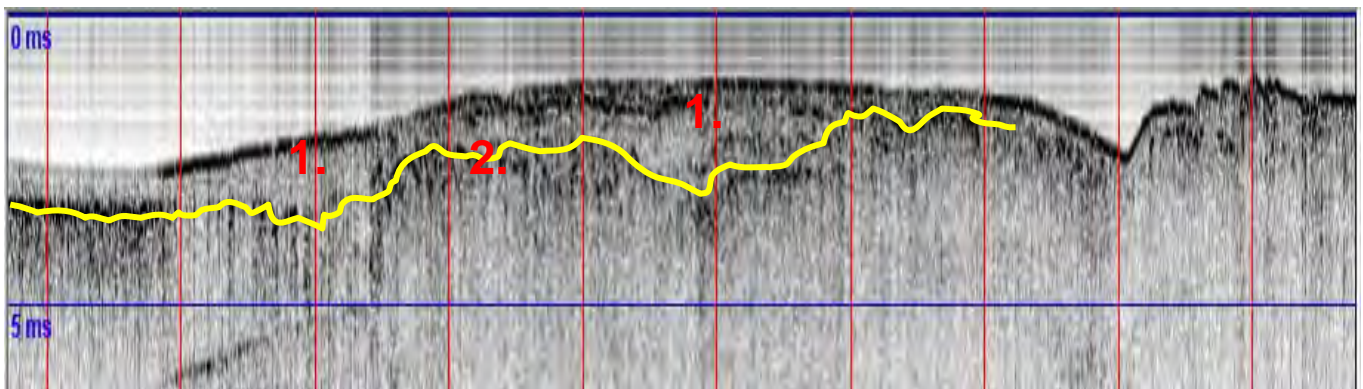
1. Migrating channel.
2. Subtidal oyster reef founded in sub-bottom.

Figure 33. Seismic CHIRP profiles for Lines 8\_1 & 17, from Haldeman Creek and Dollar Bay respectively.



## Line 20\_1, Northern end of South Naples Bay (600-1150m)

Ravinement surface with a paleochannel.



## Line uphaldeman, Mouth of Haldeman Creek (500-950m)

1. Ravinement surface.
2. Deltaic sediments resting on old surface.

Figure 34. Seismic CHIRP profiles for Lines 20\_1 & uphaldeman, from southern Naples Bay and Haldeman Creek respectively.