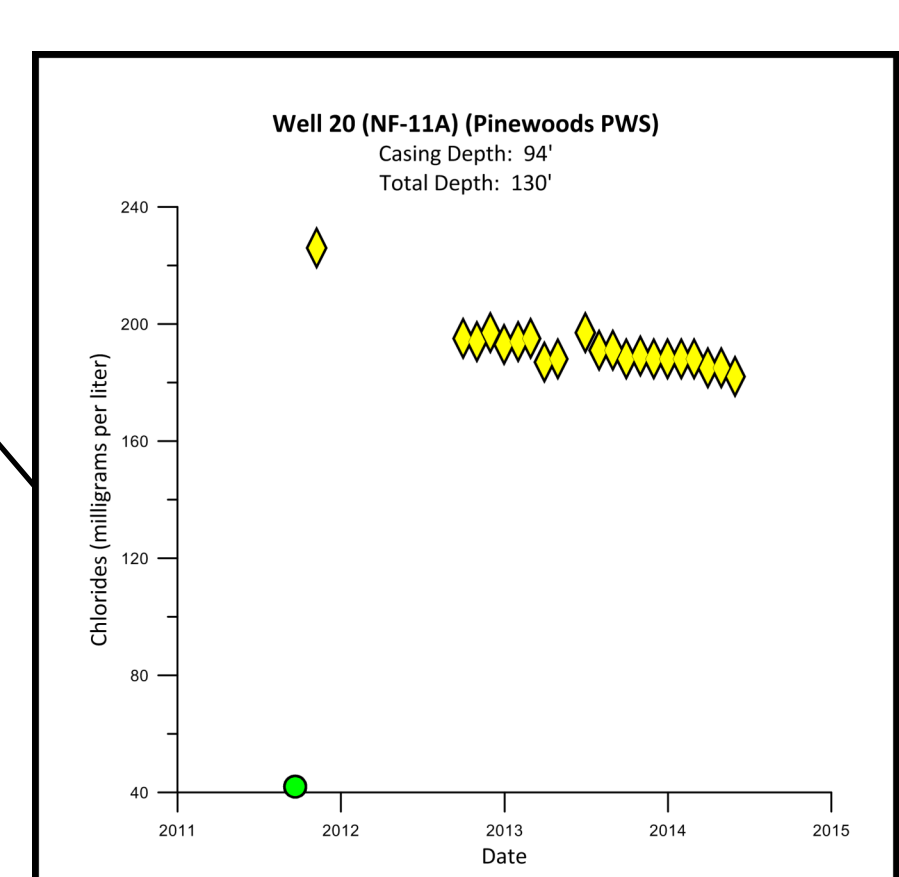
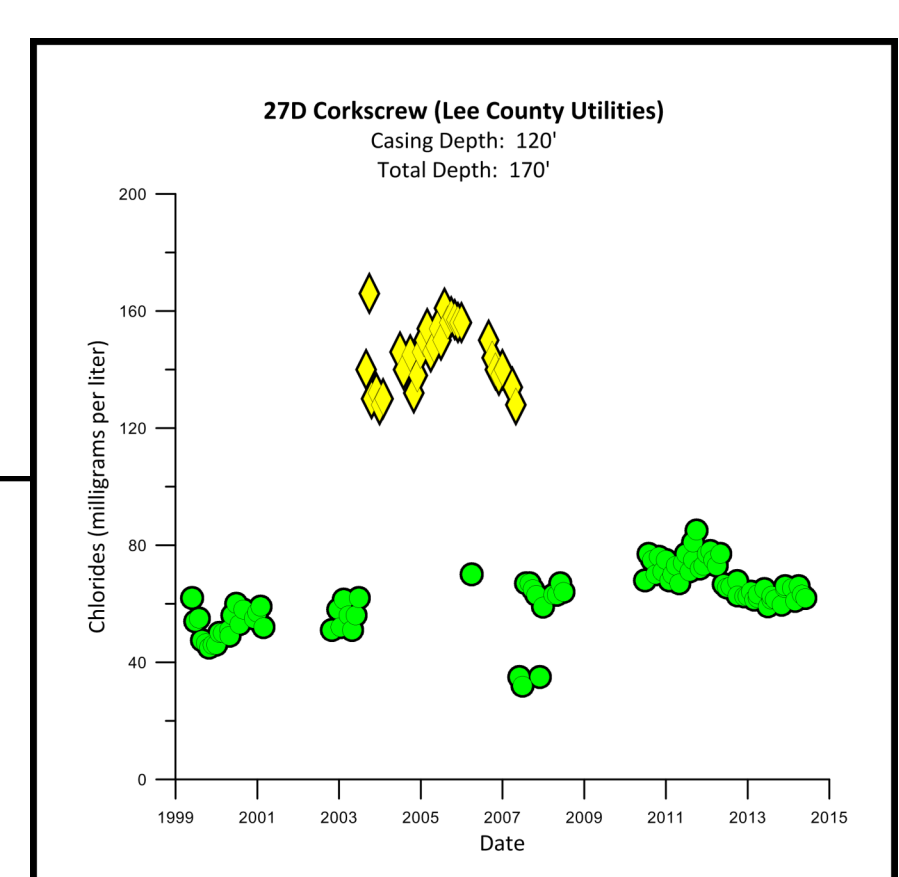
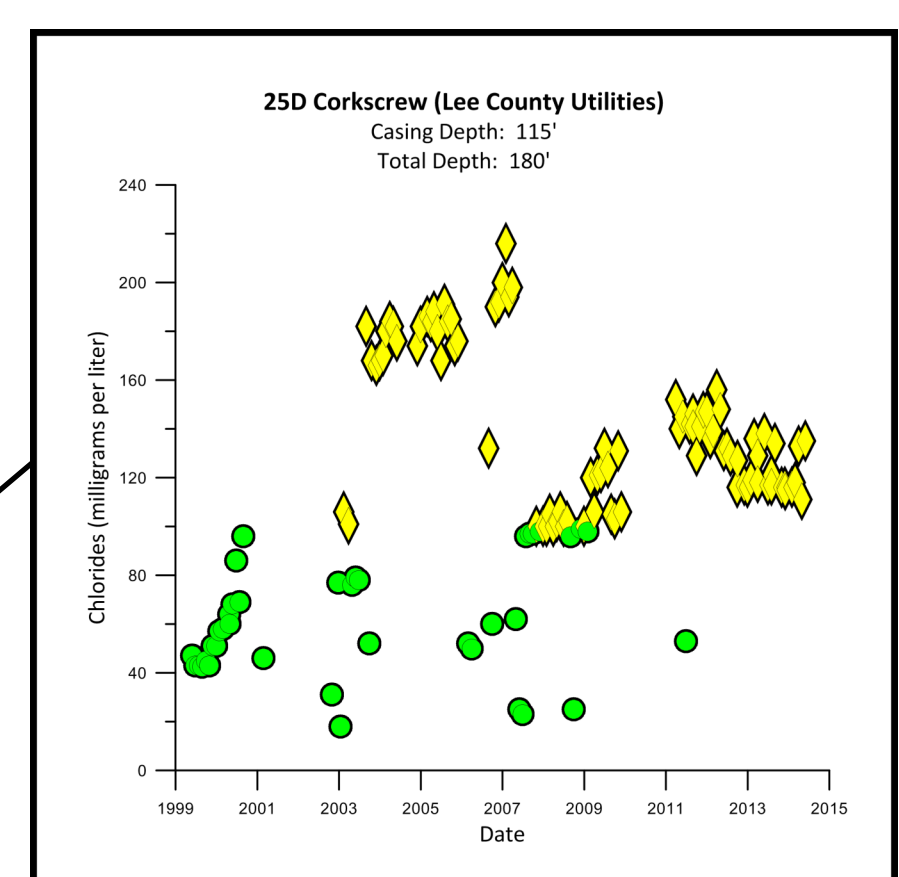
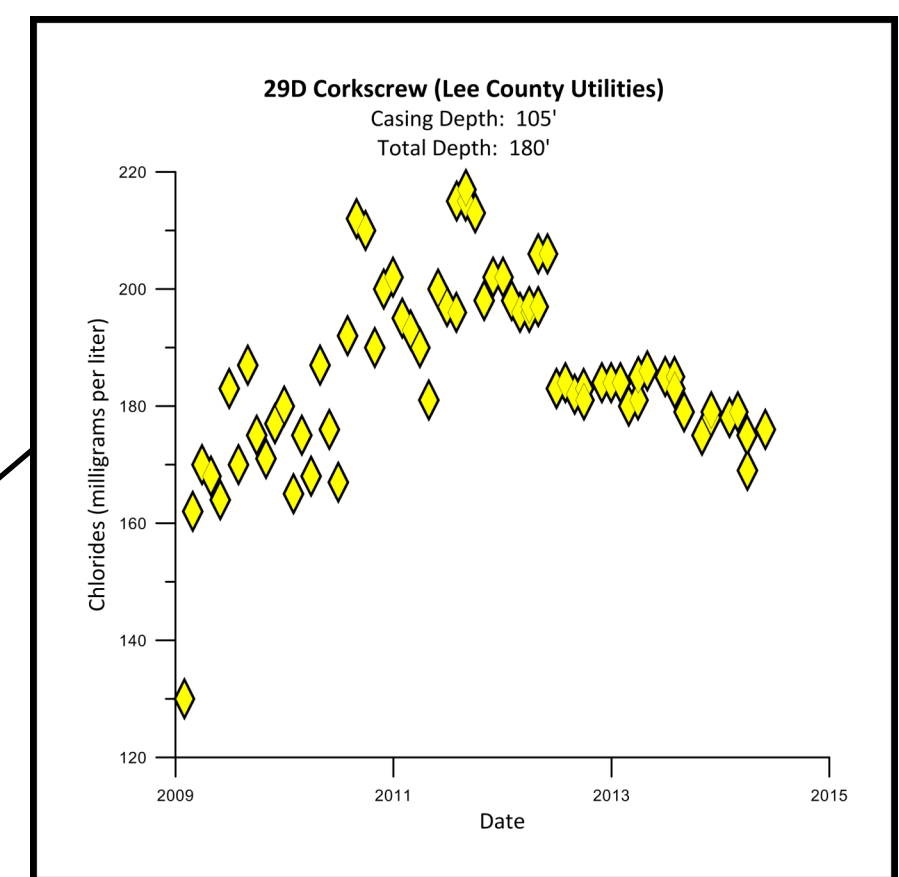
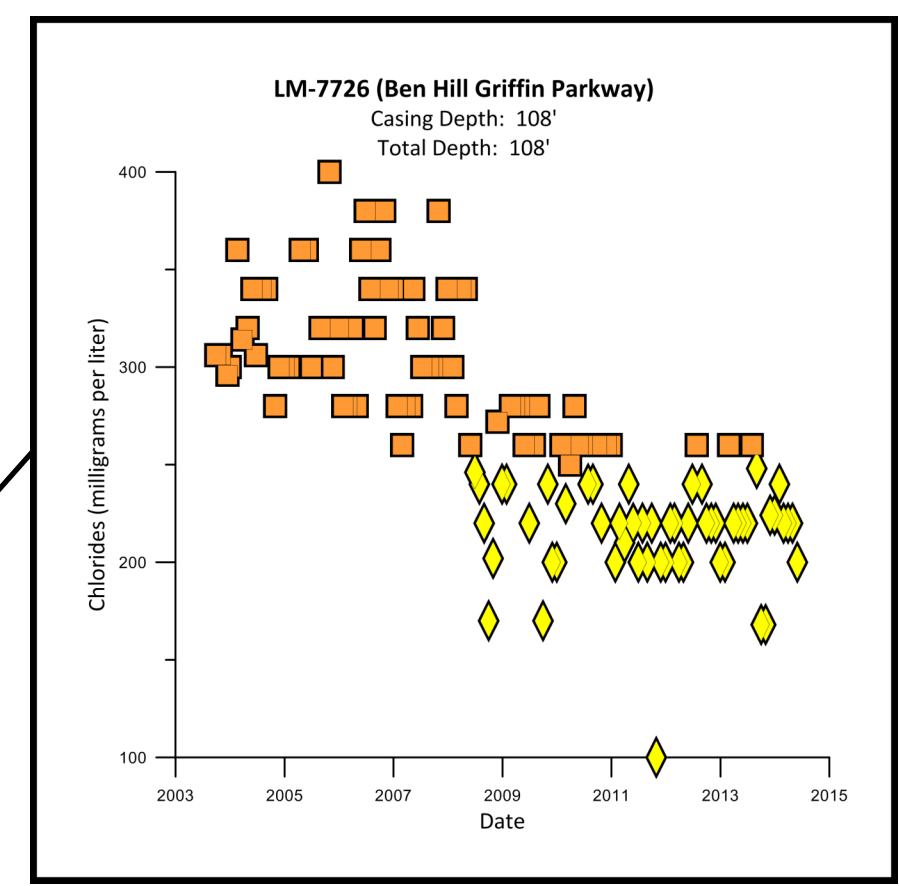
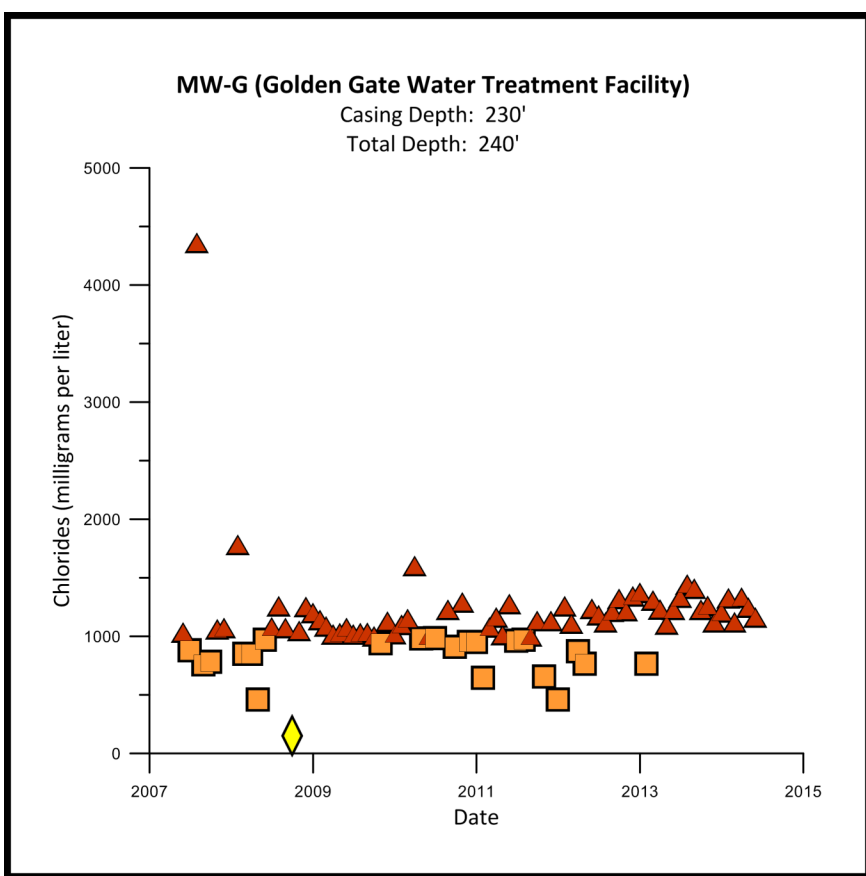
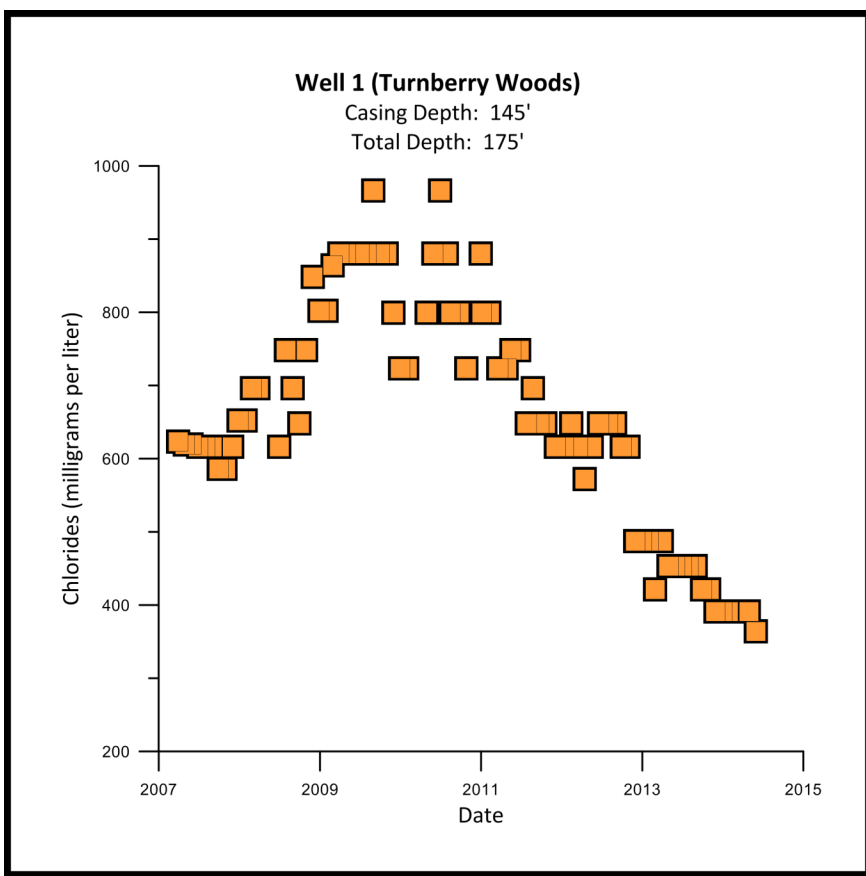
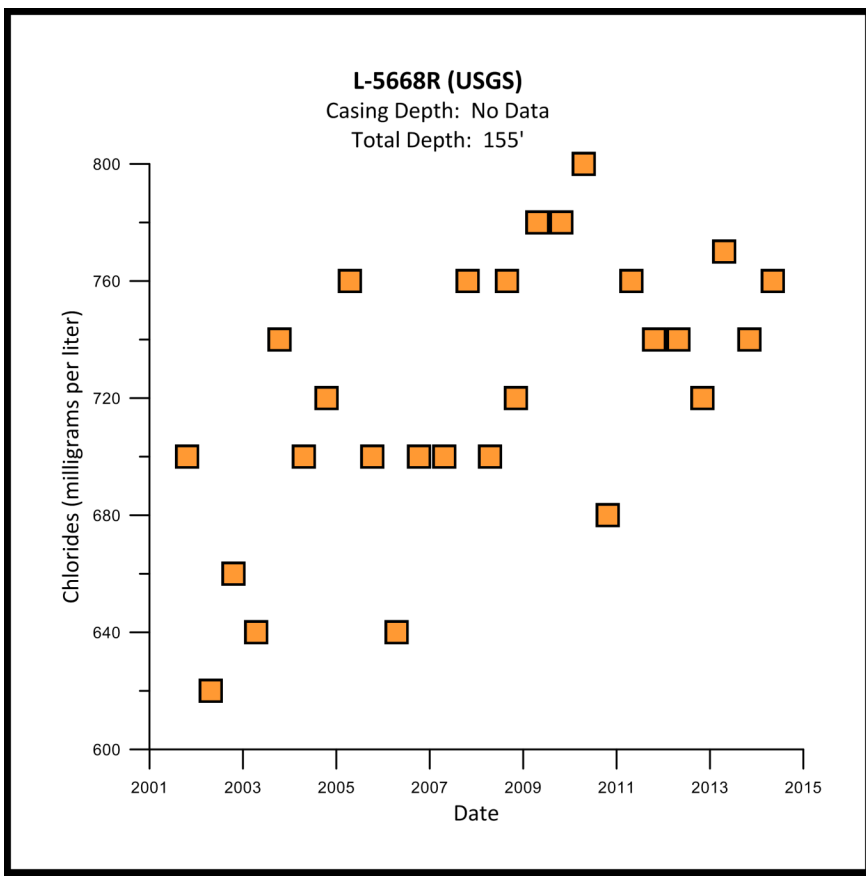
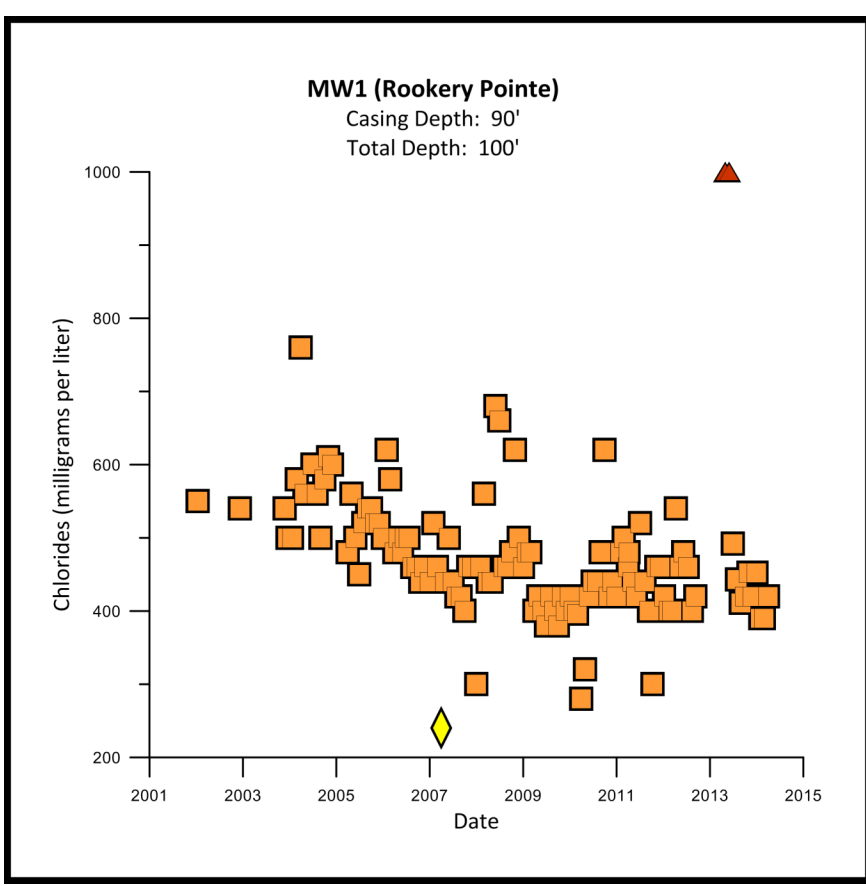


Lee and Collier Counties

Estimated Position of the Saltwater Interface

Sandstone Aquifer

March/April/May 2014



Map Number	SFWMD Facility ID	Project Name	Well Name	X	Y	Casing Depth (feet)	Total Depth (feet)	Average Chloride (mg/L)
168	193.956	GOLDEN GATE WATER TREATMENT FACILITY	MW-G	428404	672116	230	240	1,245
279	NA	USGS 2825108072002	I-5688	397949	759361	No Data	155	760
278	13.600	PINEWOODS PUBLIC WATER SUPPLY	20 (SSA) (NF-11A)	405841	759345	94	130	184
284	13.588	PINEWOODS PUBLIC WATER SUPPLY	18 (7A) (SSA) (NF-7A)	408399	759266	96	121	187
295	31.366	LEE COUNTY UTILITIES	GM-4 (ISSA)	418993	792851	95	160	87
298	26.804	LEE COUNTY UTILITIES	250 Corkscrew (ISSA)	419135	770391	115	180	126
299	26.835	LEE COUNTY UTILITIES	260 Corkscrew (ISSA)	419179	768428	120	170	74
302	26.836	LEE COUNTY UTILITIES	270 Corkscrew (ISSA)	419299	764683	120	170	64
304	131.174	LEE COUNTY UTILITIES	380 Corkscrew (ISSA)	419355	762921	100	300	82
308	31.368	LEE COUNTY UTILITIES	GM-3 (ISSA)	419858	793077	100	195	45
311	128.756	LEE COUNTY UTILITIES	330 Corkscrew (ISSA)	421090	770677	130	238	67
313	31.369	LEE COUNTY UTILITIES	GM-4 (ISSA)	421574	792417	104	185	70
315	138.742	LEE COUNTY UTILITIES	330 Corkscrew (ISSA)	422661	770760	179	292	23
316	128.364	LEE COUNTY UTILITIES	290 Corkscrew (ISSA)	423714	779180	105	180	173
319	31.370	LEE COUNTY UTILITIES	GM-5 (ISSA)	424083	792457	104	185	54
320	128.286	LEE COUNTY UTILITIES	330 Corkscrew (ISSA)	424254	777828	132	169	139
323	128.740	LEE COUNTY UTILITIES	330 Corkscrew (ISSA)	424793	776476	115	200	123
328	29.785	LEE COUNTY UTILITIES	1 Corkscrew (ISSA)	425886	774068	132	243	71
332	31.371	LEE COUNTY UTILITIES	GM-6 (ISSA)	426804	792451	90	235	41
338	131.178	LEE COUNTY UTILITIES	5 Corkscrew (ISSA)	427750	770661	209	235	37
339	131.175	LEE COUNTY UTILITIES	2 Corkscrew (ISSA)	427779	774542	209	213	78
346	31.372	LEE COUNTY UTILITIES	GM-7 (ISSA)	429355	792472	90	235	44
347	131.176	LEE COUNTY UTILITIES	3 Corkscrew (ISSA)	429480	775012	209	227	53
350	131.179	LEE COUNTY UTILITIES	4 Corkscrew (ISSA)	429596	770406	214	249	34

Map Number	SFWMD Facility ID	Project Name	Well Name	X	Y	Casing Depth (feet)	Total Depth (feet)	Average Chloride (mg/L)
351	129.342	LEE COUNTY UTILITIES	340 Corkscrew (ISSA)	437879	789953	260	360	40
354	31.373	LEE COUNTY UTILITIES	GM-9 (ISSA)	434670	793305	91	120	40
355	129.343	LEE COUNTY UTILITIES	350 Corkscrew (ISSA)	436003	770033	210	301	41
358	31.374	LEE COUNTY UTILITIES	GM-10 (ISSA)	437377	792484	97	200	49
359	129.344	LEE COUNTY UTILITIES	360 Corkscrew (ISSA)	437700	770038	179	260	47
362	31.395	LEE COUNTY UTILITIES	GM-11 (ISSA)	440241	792245	115	185	50
364	129.345	LEE COUNTY UTILITIES	370 Corkscrew (ISSA)	440210	770052	146	200	45
365	138.846	FGJ/ALEIGH ACRES PWS	L-1418	440308	808637	55	62	78
366	31.375	LEE COUNTY UTILITIES	GM-12 (ISSA)	442674	793300	142	212	37
368	129.346	LEE COUNTY UTILITIES	380 Corkscrew (ISSA)	442969	770054	166	238	55
370	129.347	LEE COUNTY UTILITIES	390 Corkscrew (ISSA)	445390	770048	146	200	66
372	138.848	FGJ/ALEIGH ACRES PWS	L-1563	458526	810545	68	74	108
891*	31.296	GATOR SLOUGH PHASES I-V	12-1	502158	786665	252	269	52
891*	31.295	HIGHLANDS CITRUS GROVE	11-2	496996	786801	200	255	50
893*	31.803	HIGHLANDS CITRUS GROVE	13-17	503138	778399	218	250	32
908*	149.449	GATOR SLOUGH PHASES I-V	M-285	482802	803151	100	140	28
909*	149.454	GATOR SLOUGH PHASES I-V	M-286	482804	803151	180	200	32
915*	195.169	TURNBERRY WOODS	Well 1	409527	712429	145	175	378
980*	200.178	THE CLUB PELICAN BAY	SSA irr well (OZMW-1)	391034	698808	145	171	99
990*	252.514	THE STRAND MASTER PROPERTY OWNERS ASSOCIATION	SS-1	411521	707198	120	160	379
991*	252.515	THE STRAND MASTER PROPERTY OWNERS ASSOCIATION	SS-2	410379	714557	120	160	353
1008*	262.552	THE CLUB AT MEDITERRA	SS-1	404685	715662	130	160	1,134
1013*	1.464	VETERANS PARK PHASE IV	Well 1	450294	822390	115	130	417

Map Number	SFWMD Facility ID	Project Name	Well Name	X	Y	Casing Depth (feet)	Total Depth (feet)	Average Chloride (mg/L)
1019*	5.048	DEL TURA COUNTRY CLUB	W-5	358522	873179	No Data	100	680
1023*	36.802	LEGENDS GOLF AND COUNTRY CLUB	SS-2	351060	796440	80	95	280
1027*	26.807	LEGENDS GOLF AND COUNTRY CLUB	SS-1	390925	799790	80	95	116
1038*	30.155	GATEWAY LANDSCAPE IRRIGATION	DW-1	414030	816342	73	105	68
1041*	30.156	GATEWAY LANDSCAPE IRRIGATION	DW-2	414779	815443	72	105	60
1051*	30.157	GATEWAY LANDSCAPE IRRIGATION	DW-3	415421	814491	73	112	56
1044*	103.473	ROOKERY POINT	MW1	395459	767828	90	100	420
1046*	111.683	RENAISSANCE	3	393298	807941	90	120	772
1048*	114.400	SHADOW WOOD PRESERVE	PW-4	381661	776144	120	160	665
1051*	114.650	COLONIAL OAKS	PW-3	397900	785100	90	120	124
1053*	122.117	THE VERANDAH	17	407456	859837	90	110	185
1075*	142.771	BEN HILL GRIFFIN PARKWAY	LM-7726	399128	780993	108	108	213
1077*	145.108	BRIDGETOWN	MW	401806	818019	82	119	92
1092*	179.507	MASTERS LANDING	MW	299543	809545	234	327	400
1101*	180.902	BONITA FAIRWAYS	BF-5	397340	734250	125	160	91
1111*	195.440	GATEWAY LANDSCAPE IRRIGATION	PW-5	416697	818049	73	115	90
1113*	195.710	BOTANICA LAKES	SS-1	396615	818050	80	100	75
1114*	195.711	BOTANICA LAKES	SS-2	396600	818955	80	120	65
1116*	197.654	THE GROVE	PW-2	448147	818088	105	130	64
1124*	219.857	SONMERSET GOLF COURSE	SS-1	401957	810681	82	119	240
1126*	252.509	STONEBROOK COMMUNITY DEVELOPMENT DISTRICT	WMH-6 (SS)	406604	785853	100	130	320
1128*	256.023	VETERANS PARK PHASE IV	W-2 (ISSA)	417035	827569	100	150	300
1132*	265.176	VETERANS PARK PHASE IV	Well 4	447949	823341	110	160	500

Structures

- Culvert
- Lock
- Pump
- Spillway
- Weir

PWS† Chlorides

- ≤100 mg/L
- 101 - 250 mg/L
- 251 - 1,000 mg/L
- >1,000 mg/L

Non-PWS† Chlorides

- ≤100 mg/L
- 101 - 250 mg/L
- 251 - 1,000 mg/L
- >1,000 mg/L

Wells

- ▲ 433 (3900) Map Number(chloride)

Wellfields in the Sandstone Aquifer

- Wellfields in Other Aquifers
- Saline Water Bodies
- Freshwater Bodies
- Mangrove and Saltwater Marsh
- Roads

† PWS = Public Water Supply

- Estimated 250 mg/L isochlor, 2009 (updated)
- Estimated 250 mg/L isochlor, 2014

Well and chloride information was obtained from USGS and SFWMD records. Chloride values are given in milligrams per liter (mg/L). Map data represent the average of available chloride values for the period of March/April/May 2014. Graphs of selected wells represent the period of record for each well through May 2014. The dashed isochlor lines mark an approximation of the farthest inland extent of the saltwater interface as defined by the 250 mg/L chloride concentration. The dashed red line corresponds to 2014 data, and the dashed blue line corresponds to 2009 data (updated in 2014/2015 to incorporate new and corrected data).



Hydrogeology Unit

DISCLAIMER:
This map is a conceptual tool utilized for project development and implementation only. This map is not self-executing or binding, and does not otherwise affect the interests of any person including any vested rights or existing uses of real property. Any information, including but not limited to maps and data, received from the SFWMD is provided "as is" without any warranty, and the SFWMD expressly disclaims all express and implied warranties of merchantability and fitness for a particular purpose. The District does not make any representations regarding the use, or the results of the use, of the information provided to you by the District.