

April - July 2016

Kissimmee River Restoration Project and Kissimmee Basin Environmental and Restoration Features



Photography by Brent Anderson
Environmental Scientist
Applied Sciences Bureau
South Florida Water Management District
branders@sfwmd.gov



April 6, 2016

Looking northwest at the MacArthur Ditch backfill and borrow area. Spoil is excavated from the borrow area and barged upstream to backfill the ditch to the north.

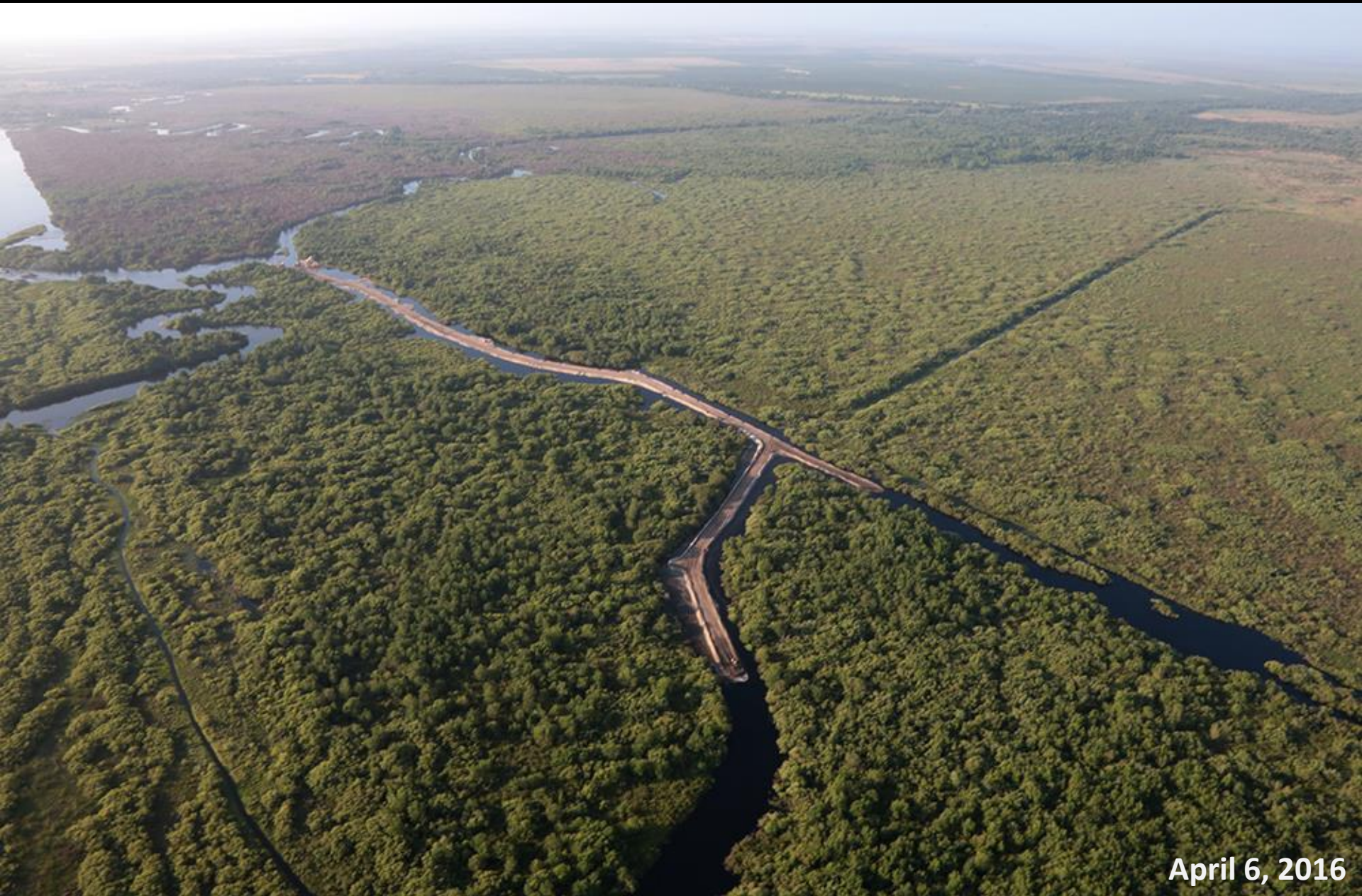


April 6, 2016

Backfilling the MacArthur Ditch.



Backfilling the MacArthur Ditch.



April 6, 2016

Looking south (downstream) a the MacArthur Ditch backfill progress.



May 11, 2016

Looking north (upstream) at the MacArthur Ditch backfill progress.



May 11, 2016

Looking north (upstream) at the MacArthur Ditch backfill progress.



June 22, 2016

Looking north (upstream) at the MacArthur Ditch backfill progress.



May 18, 2016

MacArthur Ditch backfill looking south.



April 6, 2016

Looking north at the Phase I restoration area river channel and floodplain.



Storms sweep across the Kissimmee Valley.



June 29, 2016

Snail kite in the Phase I restoration area



April 6, 2016

Phase IVB restoration area floodplain at Avon Park.



April 6, 2016

Phase IVB restoration area floodplain at Avon Park.



April 6, 2016

Phase IVB restoration area floodplain and river channel.



April 6, 2016

Phase IVA restoration area floodplain and river channel.



June 15, 2016

Snail kites began showing up in the Kissimmee River Phase I restoration area.



April 6, 2016

Phase I restoration area floodplain and river channel.



May 25, 2016

Phase I restoration area floodplain and river channel.



June 22, 2016

Looking north at the Phase IV restoration area river channel and floodplain at Avon Park.



June 22, 2016

Looking south at the Phase I restoration area river channel and floodplain at Montsdeoca.



June 29, 2016

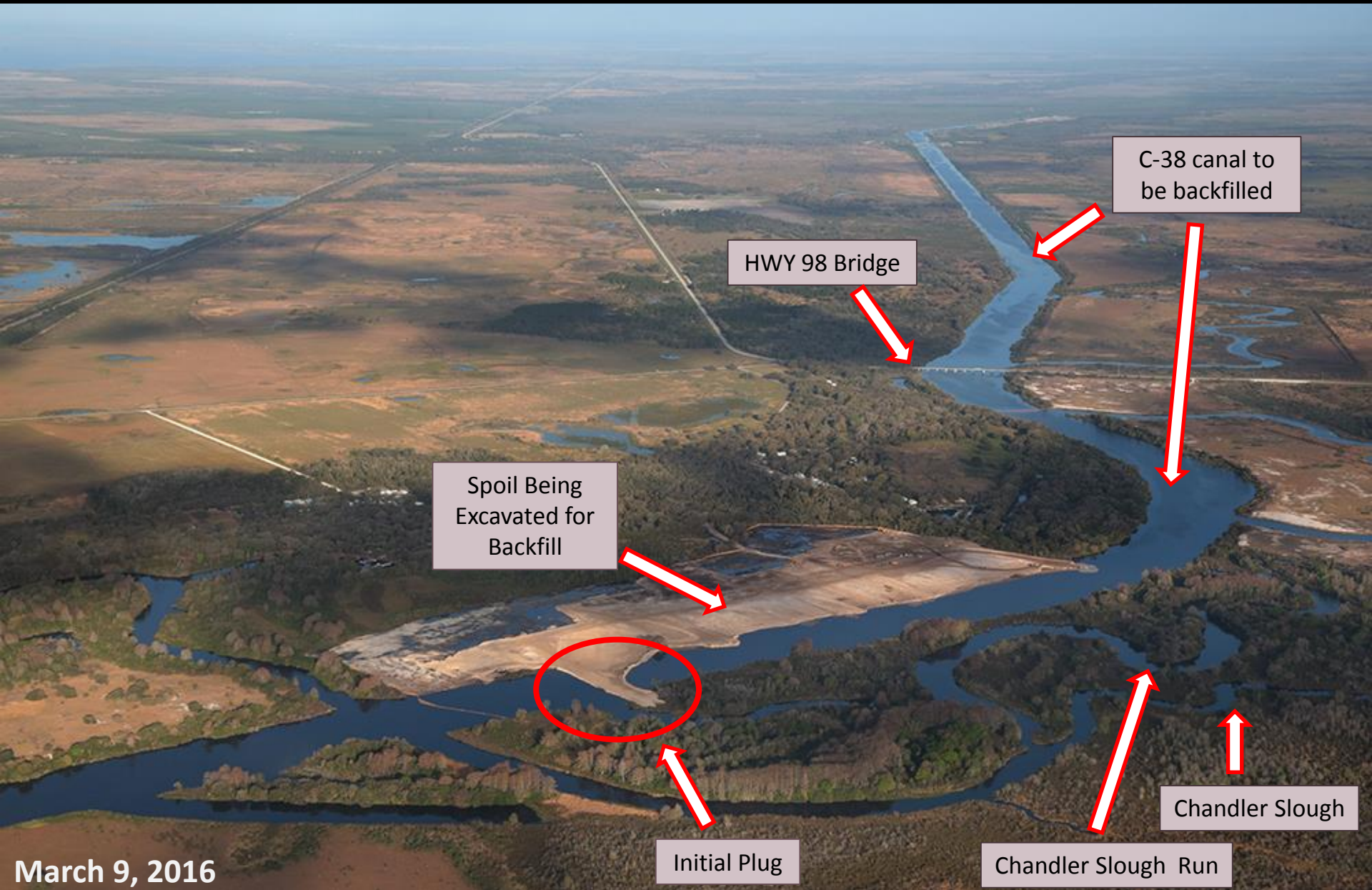
Snail kite in the Phase I restoration area

Reach 3 C-38 Backfill
Construction Progress
February 2016



April 12, 2016

Kissimmee River Reach 3 restoration area. View from C-38 canal looking north at the Reach 3 plug and C-38 backfill



HWY 98 Bridge

C-38 canal to be backfilled

Spoil Being Excavated for Backfill

Initial Plug

Chandler Slough Run

Chandler Slough

March 9, 2016

Kissimmee River Phase/Reach 3 restoration area looking northwest. Contractors have successfully completed the initial plug of C-38 reach 3 backfill. They will now continue their way northwest backfilling the canal. Phase/Reach 3 continues upstream to HW98 bridge. Phase/Reach 2 will continue further upstream to connect with Phase/Reach 1 backfill completed in 2001.



March 23, 2016

Looking west at Reach 3 restoration area. Discharge at S65C was below 400 cubic feet per second (cfs).



April 6, 2016

Kissimmee River Reach 3 restoration area.



Kissimmee River Reach 3 restoration area.



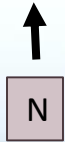
April 21, 2016

Kissimmee River Reach 3 restoration area.



May 11, 2016

Kissimmee River Reach 3 restoration area.



Recarved River Section

Chandler Slough

HWY 98 Bridge

Spoil Mound
Prepped for
Backfilling

Plug Construction



April 6, 2016

Kissimmee River Reach 3 restoration area. View from C-38 canal looking north at the Reach 3 plug and C-38 backfill



April 21, 2016

Kissimmee River Reach 3 restoration area. View from C-38 canal looking north at the Reach 3 plug and C-38 backfill



May 11, 2016

Kissimmee River Reach 3 restoration area. View from C-38 canal looking north at the Reach 3 plug and C-38 backfill



May 25, 2016

Reach 3 construction area looking north under high flows (7000 cfs).



May 11, 2016

Kissimmee River Reach 3 restoration area looking south down the C-38 canal where a plug is being placed at the north end of reach 3 just south of the HW98 bridge.



May 11, 2016

Kissimmee River Reach 3 restoration area looking south down the C-38 where a plug is being placed at the north end of reach 3 just south of the HW98 bridge.



May 11, 2016

Kissimmee River Reach 3 restoration area looking north up the C-38 canal where a plug is being placed at the north end of reach 3 just south of the HW98 bridge.



May 11, 2016

Kissimmee River Reach 3 restoration area looking south up the C-38 canal where a plug is being placed at the north end of reach 3 just south of the HW98 bridge.



May 25, 2016

Reach 3 construction area looking south from HW98 bridge under high flows (7000 cfs).



June 22, 2016

Reach 3 construction area looking south from HW98 bridge. Plugs are extending across the C-38



June 22, 2016

Reach 3 construction area looking south from HW98 bridge. Plugs are extending across the C-38. An extended period of high flows (7000 cfs) has resulted in some erosion of the new backfill and has made it challenging to work with such high velocities



May 18, 2016

Kissimmee River Reach 3 restoration area looking north up the C-38 where a plug is being placed at the north end of reach 3 just south of the HW98 bridge.



May 25, 2016

Reach 3 construction area looking north under high flows (7000cfs).



May 25, 2016

Reach 3 construction area looking north under high flows (7000 cfs).



May 18, 2016

Kissimmee River Reach 3 restoration area looking northwest.



May 18, 2016

Kissimmee River Reach 3 restoration area looking south just below HW98 bridge.



May 18, 2016

Kissimmee River Reach 3 restoration area looking south just below HW98 bridge.



May 18, 2016

Kissimmee River Reach 2 restoration area looking south. Contract for this phase of backfill is scheduled to be awarded in fall 2016.



April 6, 2016

Riverwoods Run floodplain in the Reach 2 restoration area, as a result of the C-38 plug a few miles south in the Reach 3 area, water has begun to back up and inundate the historic floodplain and abandoned oxbows, which haven't seen a flood-pulse in over 50 years.



May 25, 2016

Reach 2 restoration area at Caracara Run and floodplain looking south under high flows (7000 cfs).



May 25, 2016

Reach 2 restoration area at Riverwoods Run and floodplain looking west from C38 under high flows (7000 cfs).



May 25, 2016

Reach 2 restoration area at Riverwoods Run and floodplain looking south under high flows (7000 cfs at S65A and S65C).



June 29, 2016

A territorial Snail Kite in the Phase I restoration area.