

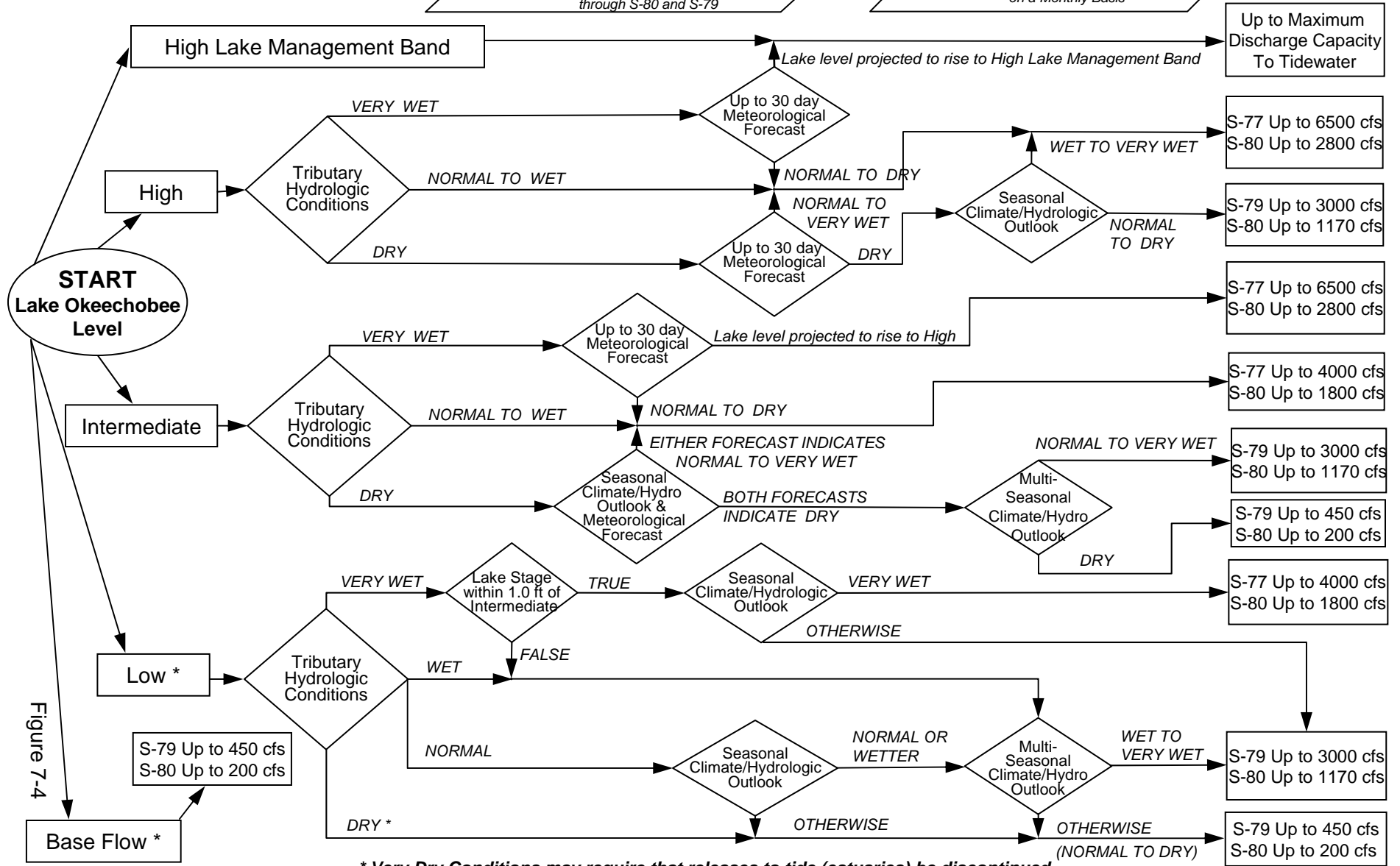
2008 LORS

Part D: Establish Allowable Lake Okeechobee Releases to Tide (Estuaries)

Note: This operational guidance provides essential supplementary information to be used in conjunction with other supporting documentation including text within the Water Control Plan.

When conducting Base Flow releases, flows can be distributed East and West up to 650 cfs as needed to minimize impacts or provide benefits through S-80 and S-79

Apply Meteorological Forecasts on a Weekly Basis; apply Seasonal and Multi-Seasonal Climate/Hydrologic Outlooks on a Monthly Basis



* Very Dry Conditions may require that releases to tide (estuaries) be discontinued

Figure 7-4