



SOUTH FLORIDA WATER MANAGEMENT DISTRICT

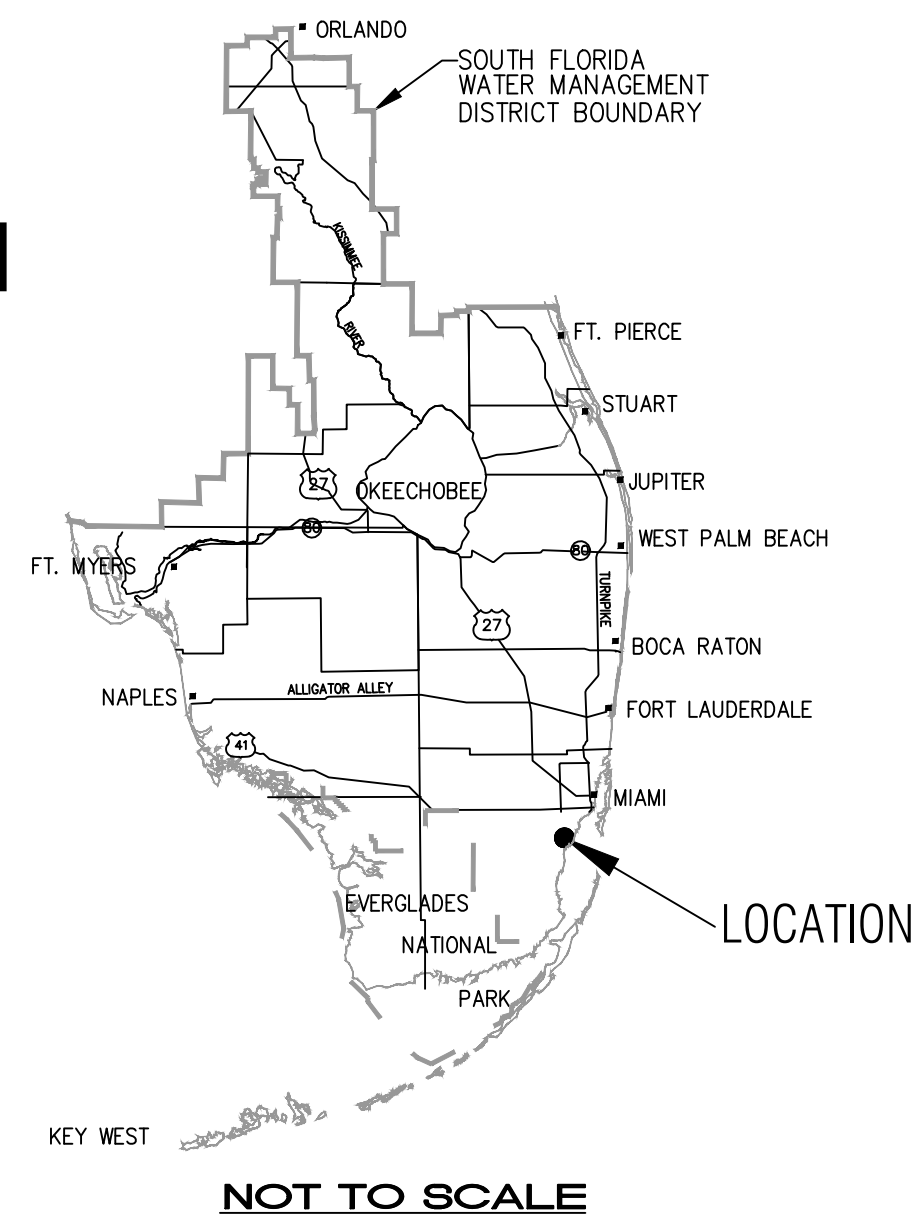
INFRASTRUCTURE MANAGEMENT BUREAU - SURVEY & MAPPING SECTION

BOUNDARY AND TOPGRAPHIC SURVEY

CANAL 100-A BANK STABILIZATION

SECTIONS 10, 11, & 14; TOWNSHIP 55 SOUTH; RANGE 40 EAST

MIAMI-DADE, FLORIDA



SURVEYOR'S NOTES

- This survey was prepared without the benefit of a title commitment.
- Additions or deletions to this survey map by other than the signing party (or parties) is prohibited without the written consent of the signing party (or parties).
- Coordinates shown herein are referenced to the State Plane Coordinate System, Florida East Zone, North American Datum 1983, Adjustment of 2011 and were obtained utilizing the Trimble VRS Now network. Checks to NGS published control in the area as well as checks to coordinates derived from OPUS (Online Positional Users Service) were made periodically during the course of the survey effort. All data has been verified by redundant measurements.
- Bearings shown herein are referenced to the State Plane Coordinate System, Florida East Zone, North American Datum 1983, Adjustment of 2011 and are further referenced to the East line of the Northeast one-quarter (NE ¼) of Section 10, Township 55 South, Range 40 East, having a bearing of North 02°11'33" West and all others are relative thereto..
- All measurements shown herein are grid and displayed in U.S. survey feet.
- Date of last field work was June 18, 2014.
- Aerial photography shown herein was obtained from the Labins website (www.labins.org) and was flown between January 6 and April 12, 2012.
- Underground utilities were not located as part of this survey.
- RIGHT-OF-WAY**

The following is a summary of the approach, methodology and analysis of collected survey control used for the determination of the final canal boundary lines.

Title Review: Based upon review of the Title Memorandum by Mike Debish, Senior Title Examiner and dated December 20, 2012 the district has an acquired interest in the canal rights-of-way and maintenance easements through portions of Sections 10, 11 and 14, Township 55 South, Range 40 East, Miami-Dade County, Florida.

The basis of interests through these sections of land has been acquired from individual entities, the FDOT, FEC and Dade County through a series of Easements, Easement Deeds, Quit Claim Deeds and Quit Claim Conveyance Deeds. In many of the conveyance documents the canal rights-of-way and easements were described per the recorded subdivision plats. Per the GCY contract assumptions, the basis of survey in plated areas will be the canal right-of-way location according to the final subdivision plat field positions.

10. Right-of-Way Maps: The primary maps used for the Canal R/W alignment are the un-recorded "Canal 100-A R/W Map", Drawing No. C-100A-8 by the Central and Southern Florida Flood Control District, dated 6-16-75 and the "Right of Way Map for Cutler Drain C-100A Extension", Project No. 2206 by the Dade County Public Works Department, dated 10-12-1962. These maps were created before the recorded subdivision maps, contain their own PLSS sectional frameworks and are believed have been the right-of-way protection alignment for design of the canal. In addition to these Canal R/W maps, the Certified Corner Record for Township 55 South, Range 40 East by The Public Works Department of Dade County, right-of-way maps for US Highway No. 1 and the FEC railway and the record subdivision maps were also used as a basis for the survey.

11. State Plane Coordinates And Control - All horizontal survey work conducted on this project utilized RTK methods using Trimble R-10 GPS GNSS System Equipment for horizontal control. The differential correction for the RTK utilized the differential correction broadcast from the Trimble VRS Now network. The control was based on the North American Datum of 1983, 2011 adjustment (NAD 83-11).

12. Certified Corner Records & National Geodetic Monuments Reporting - All section and quarter section corners utilized in the Cadastral Surveys of the Right-of-Way were documented by filing Certified Corner Records with the FDEP/DSL/Bureau of Surveying and Mapping in Tallahassee, Florida. The consultant reported to NGS through the online reporting system the status of all control marks used for this project as required by the Statement of Work from SFWMD.

13. SFWMD Bench Mark Description Reporting - The consultant has delivered to, and was accepted by, the SFWMD the Survey Data Entry & Retrieval Application (SDERA) via email due the fact that the online reporting system was inoperable at the time of the reporting. Bench Marks were established in the project limits by Second Order, Class II, differential leveling. The source Bench Marks NGS benchmark "H 342" (NGSPID AC3197) and NGS benchmark "KILLIAN" (NGSPID AC3838)

14. Location Of Improvements - The consultant utilized multiple methods in locating improvements required by the SFWMD. These included the use of: Conventional total stations; Compass direction with laser measurement equipment and the Trimble V-10 Imaging Rover.

15. Core Borings - All core borings have been located horizontally and vertically.

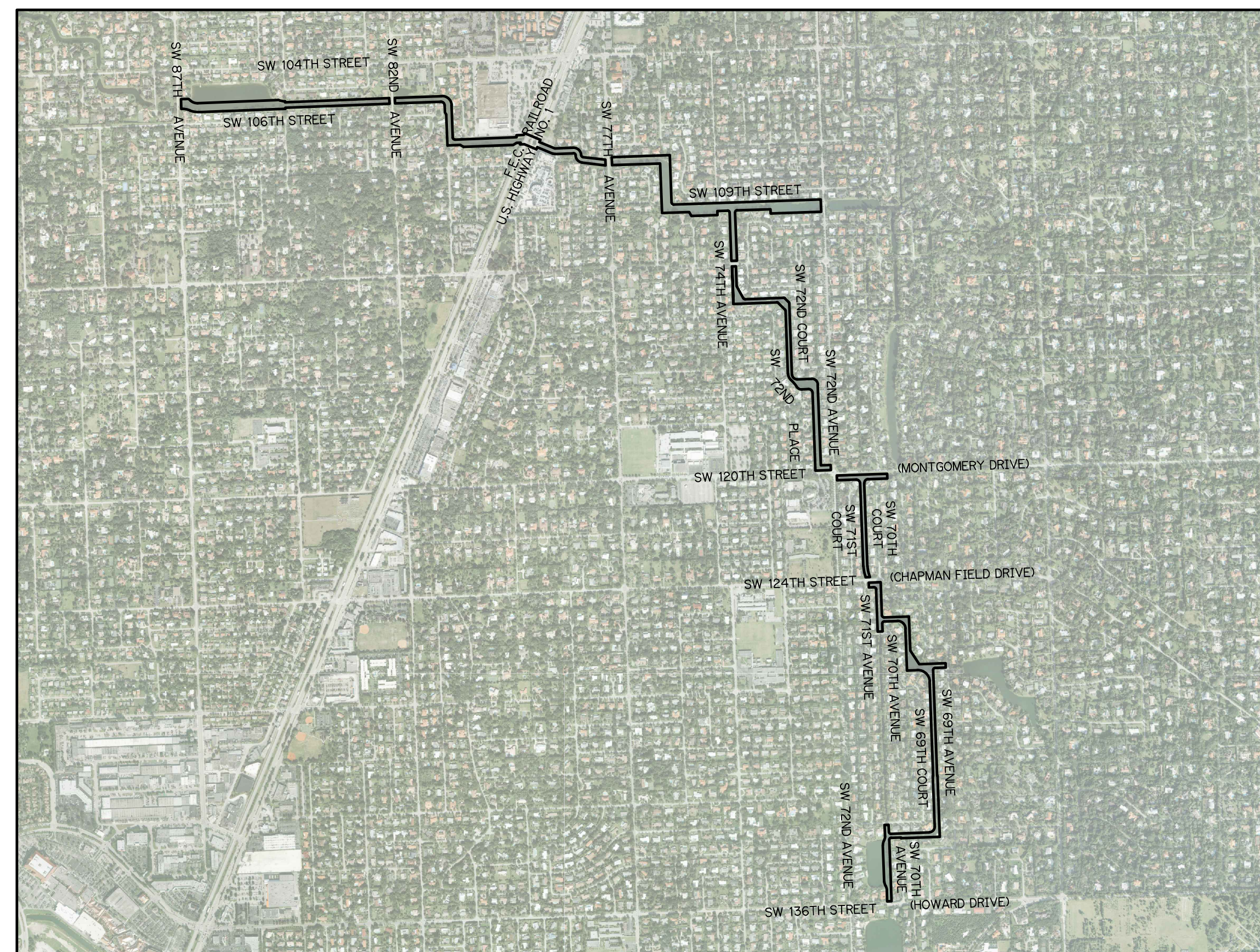
16. Establish Elevations - Elevations shown herein are referenced to the North American Vertical Datum of 1988 (NAVD 88) and are further referenced to NGS Bench Mark "H 342" (NGS PID AC3197) and NGS Bench Mark "KILLIAN" (NGS PID AC3838). To convert from NAVD88 to National geodetic Vertical Datum 29 (NGVD29) add 1.54 feet to all elevations.

17. Cross Section - All upland cross sections were obtained by GPS/RTK. All water side cross sections were derived from surfaces produced from multi-beam data and verified by conventional soundings. Hydrographic equipment used was an Odom MB1 Multi-Beam Echo Sounder, Odom DMS-05 motion sensor and Hemisphere VS131 DGPS Heading and Position Sensor. Hypack - Hysweep version 2013a software was used for data collection and post processing. Surfaces were generated in AutoCad Civil 3D 2014 software.

18. Centerline Profile - Centerline profiles were derived from surfaces produced from multi-beam data and verified by conventional soundings. Hydrographic equipment used was an Odom MB1 Multi-Beam Echo Sounder, Odom DMS-05 motion sensor and Hemisphere VS131 DGPS Heading and Position Sensor. Hypack - Hysweep version 2013a software was used for data collection and post processing. Surfaces were generated in AutoCad Civil 3D 2014 software.

19. Side Slope Erosion - Sub-surface water side slopes and undercutting locations were identified using side scan sonar. The side-scan system was the EdgeTech dual frequency (600 kHz and 1600 kHz) chirp side-scan sonar. The model used was the 4125. The side-scan sonar is capable of producing sonic images of the bottom with the resolution to display small objects if they are exposed and not completely buried. The limitations of the side-scan sonar are that it cannot penetrate the bottom and detect a buried object. The navigation equipment used for the survey was a Trimble DSM 232 Real Time Differential Global Positioning System (DGPS). The undercutting locations derived from the Side Scan Sonar data is depicted on sheets 43 through 65 of this map set and labelled as "Areas of Potential Undermining"

20. Tree Identification - Locations of all trees with a diameter of 4" or greater (measured at 4 feet above the ground) have been located and identified by point number. All tree point numbers with coordinates were provided in a spread sheet to the District for field naming identification. The tree identification is provided by the District and incorporated into the survey drawing by a table.



LOCATION MAP

INDEX OF SHEETS

SHEET 1	COVER SHEET
SHEET 2	HORIZONTAL & VERTICAL CONTROL SHEET
SHEET 3	DRAWING SET KEY SHEET
SHEET 4	LEGAL DESCRIPTION
SHEETS 5-9	LEGAL DESCRIPTION KEY SHEETS
SHEETS 10-16	BOUNDARY SURVEY AT 1"=100'
SHEETS 17-19	PROJECT MONUMENT, POINT LISTING
SHEETS 20-42	IMPROVEMENTS AND BASELINE SURVEY PROFILE AT 1"=50'
SHEETS 43-65	CROSS SECTIONS AND PLAN VIEW AT 1"=50'
SHEET 66	POINT LISTING OF FOUND MONUMENTS

APPROVED BY:

SURVEY & MAPPING SECTION

LEGEND

⊙	= SET 1" IRON PIPE WITH A CONCRETE COLLAR AND A 2" ALUMINUM DISK STAMPED "SO. FLA. WATER MANAGEMENT DIST. SURVEY MARKER 2014 C-100A R/W LB 4108" (UNLESS OTHERWISE LABELED)	PI	= POINT OF INTERSECTION
(XXXXX)	= POINT NUMBER REPRESENTING A COORDINATE PAIR OF A FOUND, SET, OR CALCULATED POSITION	PRC	= POINT IDENTIFICATION
X 12.3	= EXISTING SPOT ELEVATION	PT	= POINT OF REVERSE CURVATURE
AF	= ALUMINUM FENCE	R	= RADIUS
BP	= BEGINNING POINT	RCP	= REINFORCED CONCRETE PIPE
OME	= CANAL MAINTENANCE EASEMENT	R/W	= RIGHT-OF-WAY
COR#	= CERTIFIED CORNER RECORD NUMBER	UE	= UTILITY EASEMENT
CLF	= CHAIN LINK FENCE	W/	= WITH
CB	= CHORD BEARING	WF	= WOOD FENCE
CD	= CHORD DISTANCE	XSEC	= CROSS SECTION LOCATION
CONC.	= CONCRETE	CBASIN	= CATCH BASIN
CMP	= CORRUGATED METAL PIPE	DMH	= DRAINAGE MANHOLE
D	= DELTA	GAS	= GAS METER
(O)	= DEED MEASUREMENT	GT	= GENERIC TREE SYMBOL WITH CORRESPONDING IDENTIFICATION NUMBER
EL	= ELEVATION	LAND	= LANDSCAPE LIGHT
EP	= ENDING POINT	LM	= LIGHT POST
EQUIP.	= EQUIPMENT	WVA	= WATER VALVE
FND.	= FOUND	WUP	= WOOD UTILITY POLE
HDPE	= HIGH DENSITY POLYETHYLENE	EW	= EDGE OF WATER (EOW)
IP	= IRON PIPE & CAP	LV	= LIMITS OF VEGETATION
IR	= IRON ROD	SL	= SURVEY LIMITS
IR&C	= IRON ROD & CAP	TOB	= TOP OF BANK (TOB)
INV.	= INVERT		
ID	= IDENTIFICATION		
L	= ARC LENGTH		
(M)	= FIELD MEASUREMENT		
ORB	= OFFICIAL RECORDS BOOK		
PC	= POINT OF CURVATURE		

BORING TABULATION

BORING	NORTHING	EASTING	LATITUDE	LONGITUDE	ELEVATION
B-1	487091.60	876679.68	25° 40' 19.73" N	80° 19' 49.74" W	8.45
B-2	487244.45	878361.38	25° 40' 21.16" N	80° 19' 31.35" W	8.71
B-3	486618.41	878585.10	25° 40' 14.95" N	80° 19' 28.94" W	7.51
B-4	486736.52	879446.78	25° 40' 16.07" N	80° 19' 19.52" W	8.19
B-5	486483.16	880134.21	25° 40' 13.53" N	80° 19' 12.02" W	6.56
B-6	486350.39	880429.11	25° 40' 12.20" N	80° 19' 08.80" W	6.16
B-7	485803.55	881958.69	25° 40' 06.71" N	80° 18' 52.11" W	6.25
B-8	484627.44	882266.29	25° 39' 55.04" N	80° 18' 48.82" W	8.00
B-10	482485.10	883620.88	25° 39' 33.75" N	80° 18' 34.14" W	5.76
B-12	477935.09	884269.96	25° 38' 48.65" N	80° 18' 27.30" W	5.52

Certification

(Not valid without the signature and original raised seal of a Florida licensed Surveyor and Mapper)

I hereby certify that the Survey of the property shown and described hereon was completed under my direction and said Survey is true and correct to the best of my knowledge and belief.

I further certify that this Survey meets the Minimum Technical Standards for Surveyors set forth by the Florida Board of Professional Surveyors and Mappers in Chapter 5J-17, Florida Administrative Code, pursuant to Section 472.027 Florida State Statutes. No search of the Public Records has been made by this office. The Survey is based on information furnished by client or client's representative.

Date of Survey

George C. Young, Jr.
Professional Surveyor and Mapper
Florida Certificate No. 3036

Peter Andersen
Professional Surveyor and Mapper
Florida Certificate No. 5199

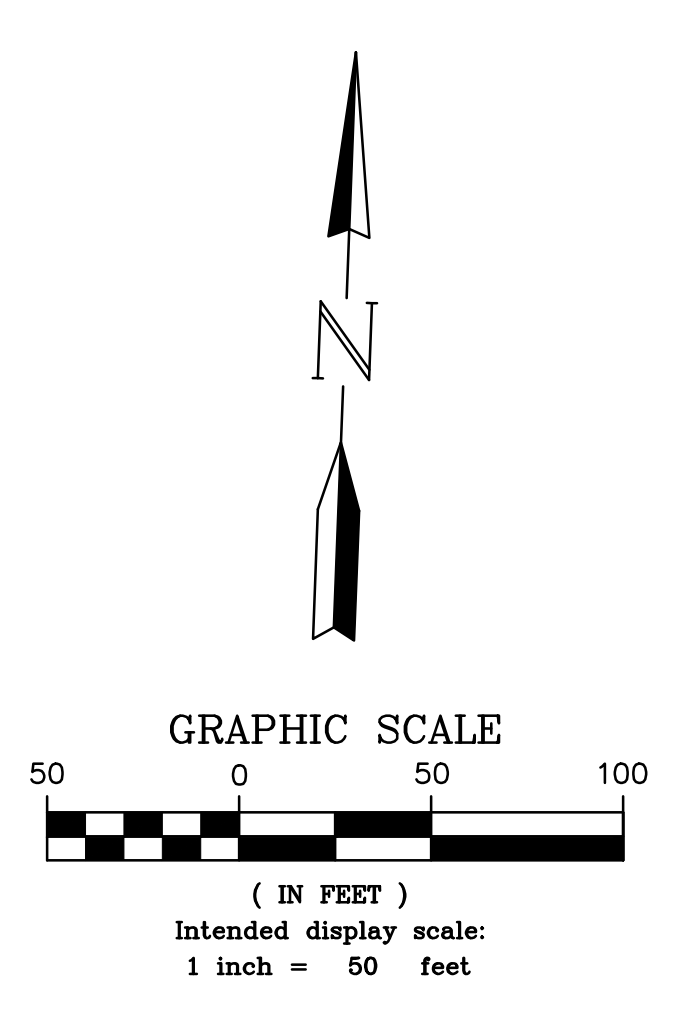
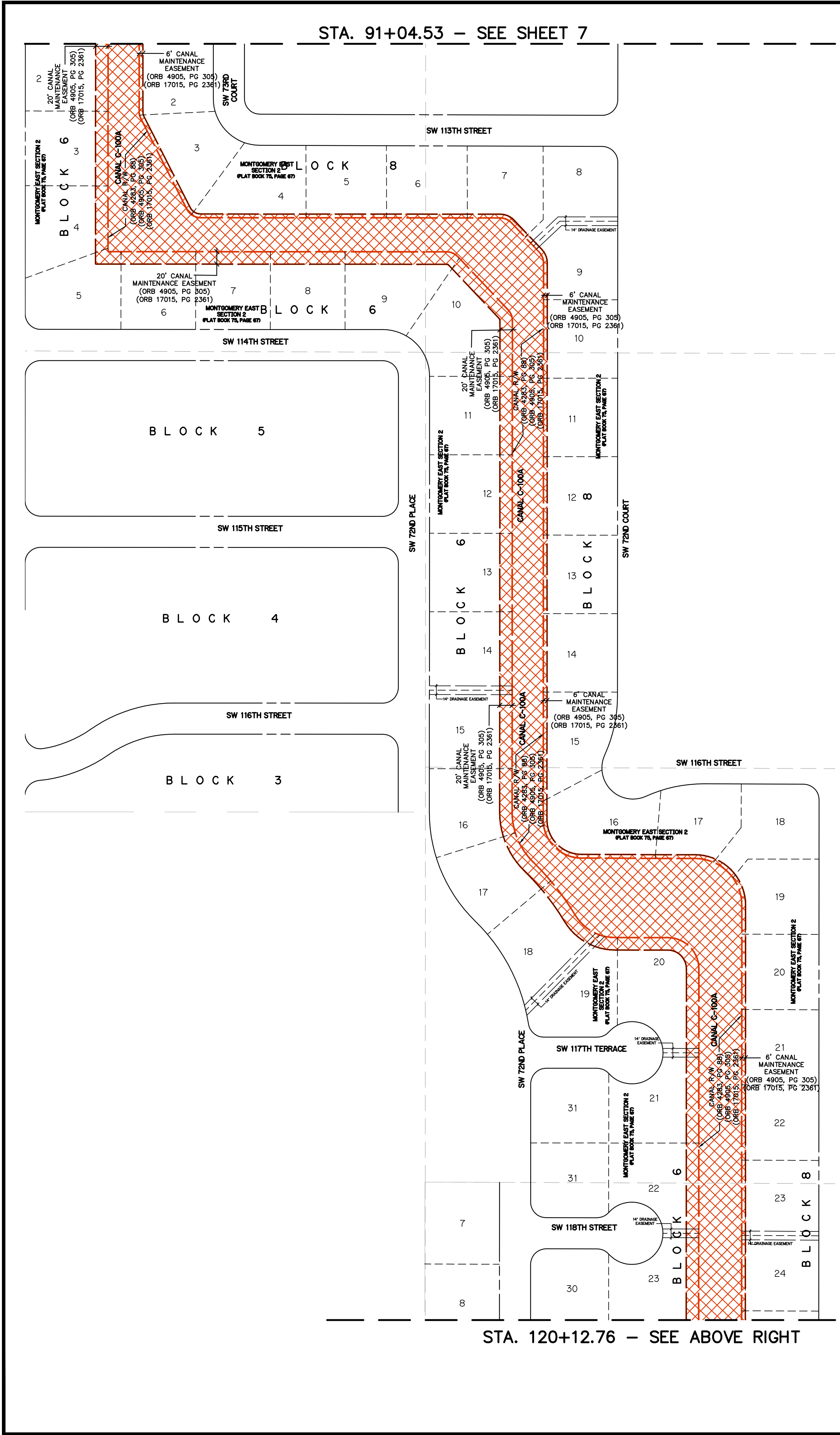


CANAL 100A BANK STABILIZATION
BOUNDARY & TOPOGRAPHIC
MIAMI-DADE, FLORIDA
SECTIONS 10, 11, & 14
TOWNSHIP 55 SOUTH
RANGE 40 EAST

SOUTH FLORIDA WATER MANAGEMENT DISTRICT
INFRASTRUCTURE MANAGEMENT BUREAU - SURVEY AND MAPPING SECTION
P. O. BOX 24680
3301 GUN CLUB ROAD
WEST PALM BEACH, FLORIDA 33416-4680

DATE	_____
CHECKED BY	_____
DRAWN	_____
REVISIONS	_____

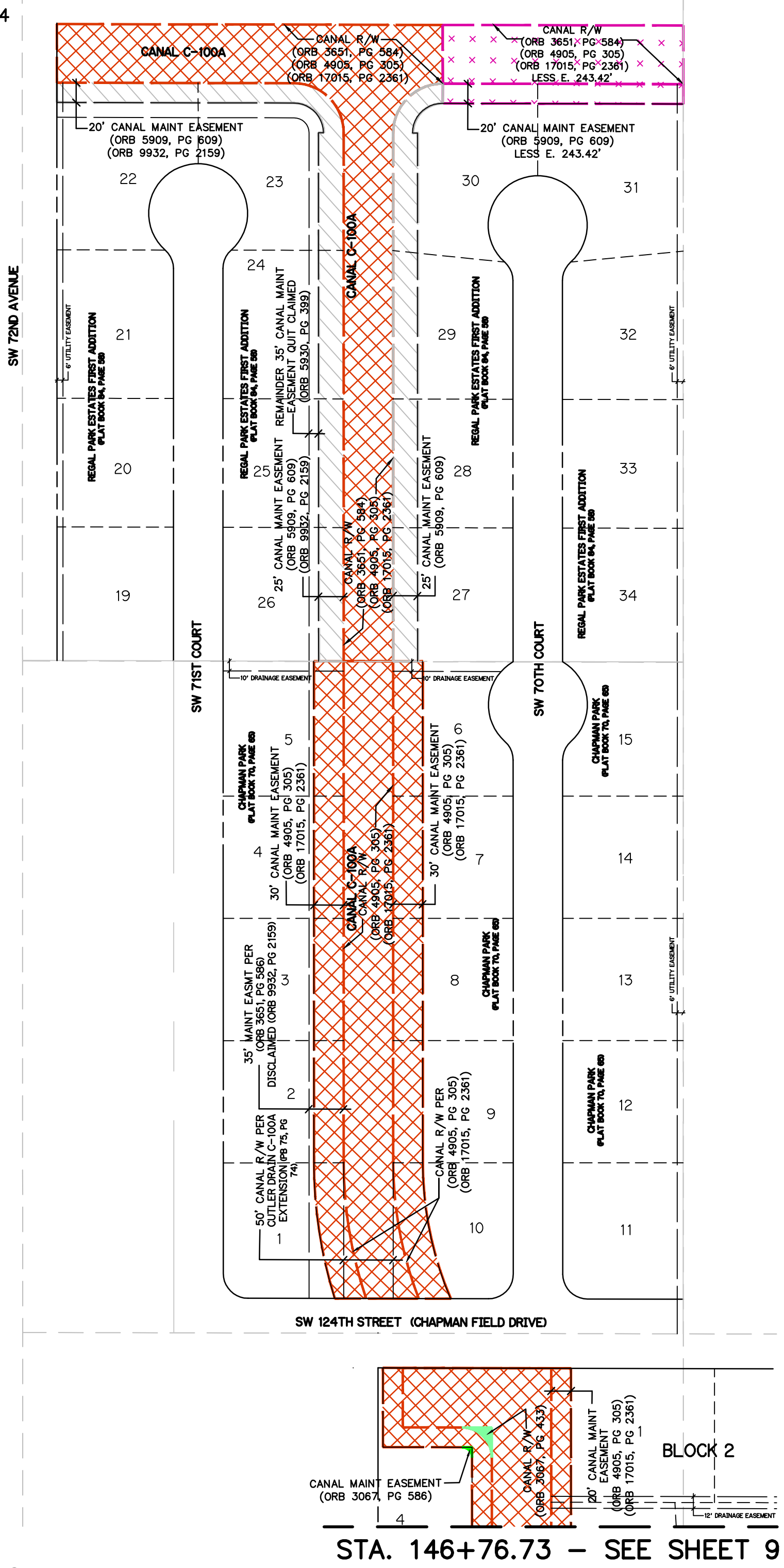
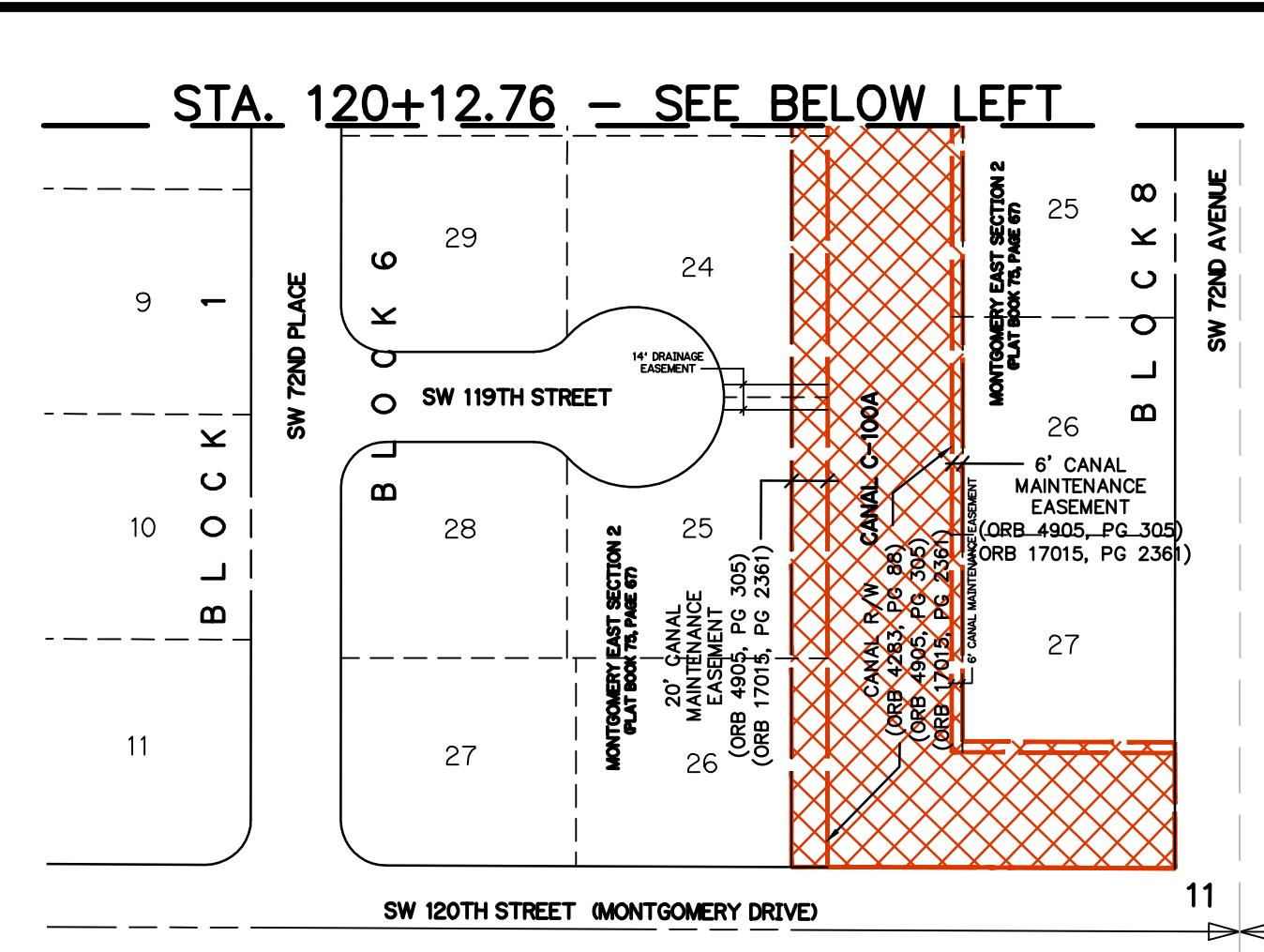
CADD FILE NO. 13-1009-06
DRAWING NO. _____
SHEET 1 OF 68



LEGEND

Legal Description Conveyance Key Map

	ORB 4905, PG 305 ORB 17015, PG 2361		ORB 9932, PG 2159
	ORB 4672, PG 516		ORB 4271, PG 71
	ORB 4672, PG 520		ORB 4271, PG 73
	ORB 6194, PG 420		ORB 3067, PG 586
	ORB 6194, PG 422		ORB 22211, PG 4718
	ORB 7061, PG 326		
	ORB 4294, PG 97		
	ORB 4788, PG 678 ORB 4770, PG 195		
	ORB 3674, PG 685		
	ORB 3067, PG 433		
	ORB 3764, PG 690		
	ORB 4499, PG 591		
	ORB 16052, PG 4880		
	ORB 5004, PG 473		
	ORB 4994, PG 368		
	DEED UNKNOWN		



SURVEYORS' NOTES AND REPORT:

- Legal descriptions used were taken from title "Real Estate Certification-Canal Rehabilitation within the C-100A Right of Way - located in Sections 10, 11, 14, 22, 23, 27 and 34, Township 55 South, Range 40 East, Miami-Dade County, Florida by Mike Debish, senior title examiner, Title and Closing, Real Estate Section, Land Resources Bureau, dated December 20, 2012 and accompanying documents.
- Record documents shown in addition to those in legend identify chain of transfer in order of first to last.
- No search of the Public Records was performed by GCY Incorporated.
- ORB, PG Denotes Official Record Book and page.
- PB, PG Denotes Plat Book and page.

SOUTH FLORIDA WATER MANAGEMENT DISTRICT
 INFRASTRUCTURE MANAGEMENT BUREAU - SURVEY AND MAPPING SECTION
 P.O. BOX 24680
 3301 GUN CLUB ROAD
 WEST PALM BEACH, FLORIDA 33416-4680

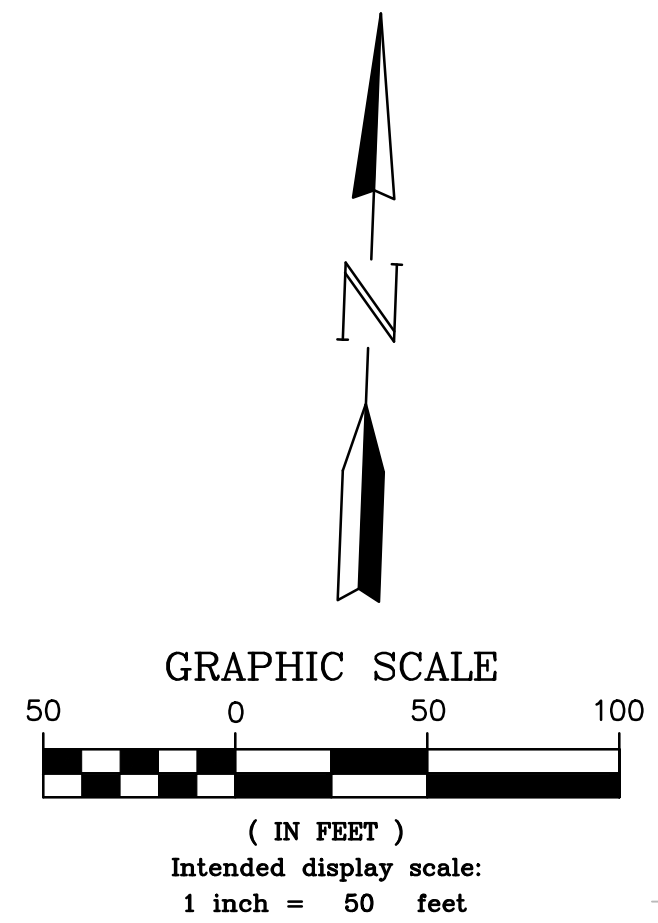
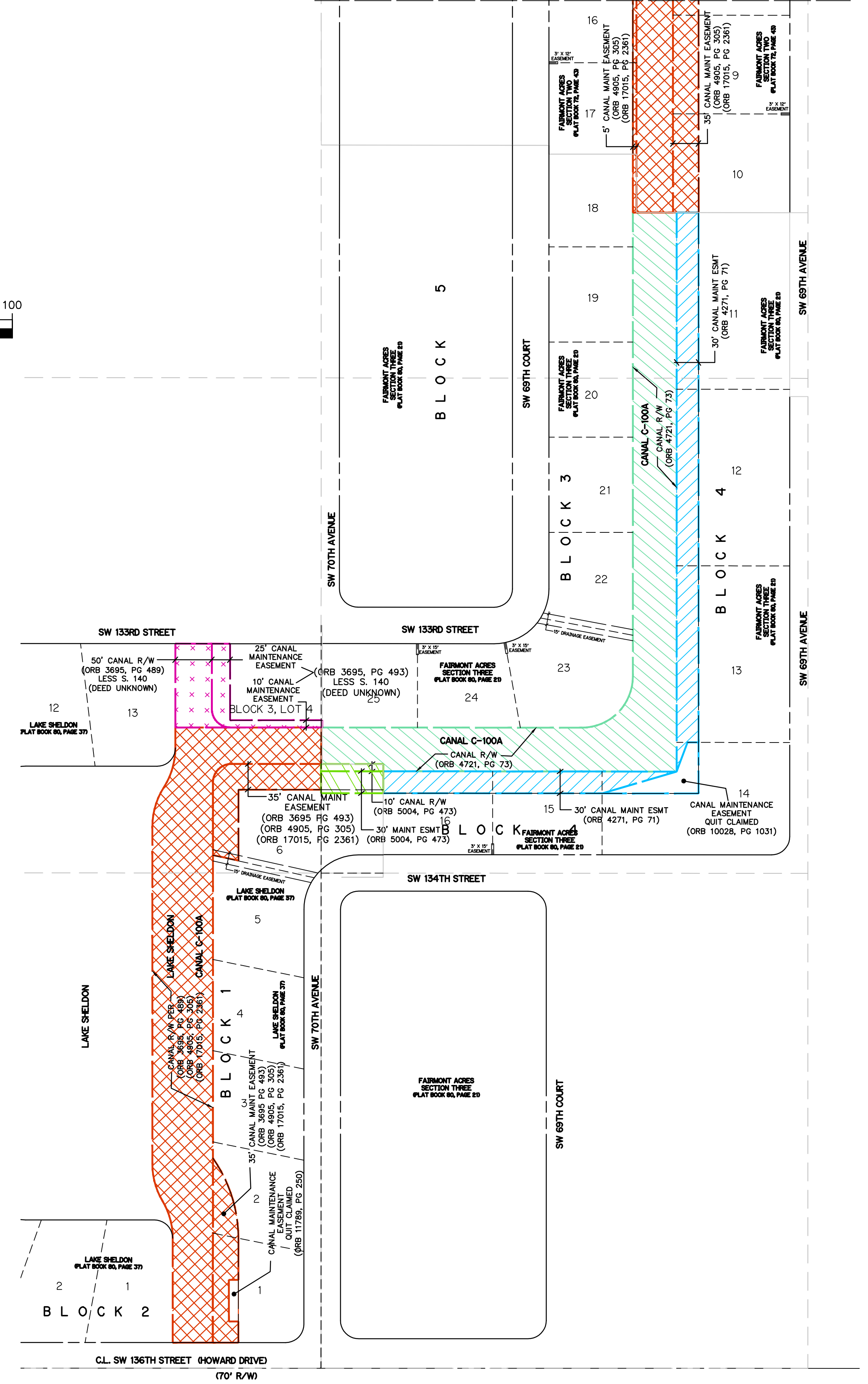
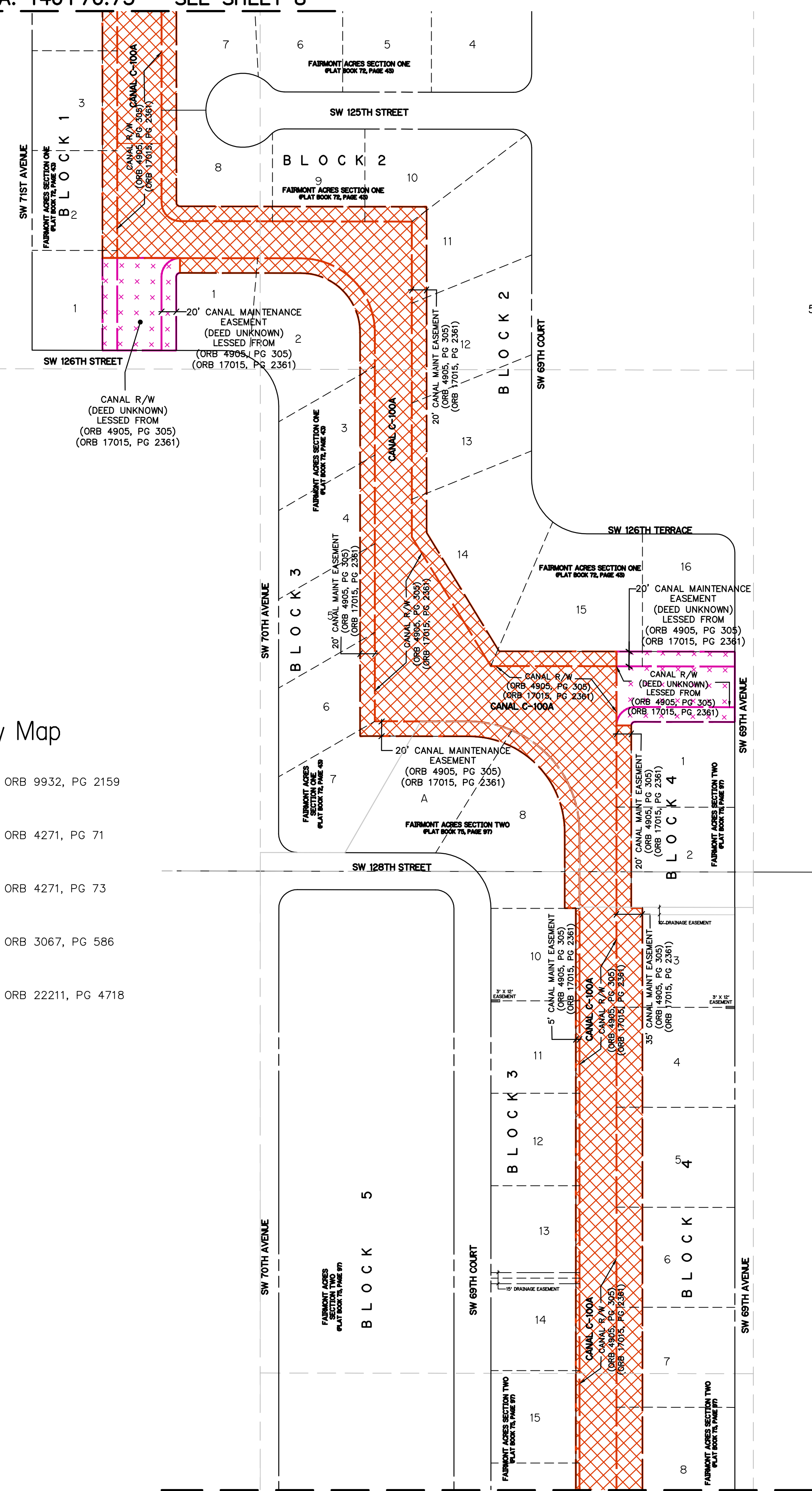
CANAL 100A BANK STABILIZATION
 BOUNDARY & TOPOGRAPHIC
 MIAMI-DADE, FLORIDA
 SECTIONS 10, 11, & 14
 TOWNSHIP 55 SOUTH
 RANGE 40 EAST

DATE: 07/24/14
 DRAWN: [Name]
 CHECKED: [Name]
 PAID: [Name]
 ADJUSTED TEXT PER SPWD REVISIONS

CADD FILE NO. 13-1009-06
 DRAWING NO. 8
 SHEET OF 68

STA. 146+76.73 - SEE SHEET 8

STA. 172+42.46 - SEE BELOW LEFT



LEGEND

Legal Description Conveyance Key Map

	ORB 4905, PG 305 ORB 17015, PG 2361		ORB 9932, PG 2159
	ORB 4672, PG 516		ORB 4271, PG 71
	ORB 4672, PG 520		ORB 4271, PG 73
	ORB 6194, PG 420		ORB 3067, PG 586
	ORB 6194, PG 422		ORB 22211, PG 4718
	ORB 7061, PG 326		
	ORB 4294, PG 97		
	ORB 4788, PG 678 ORB 4770, PG 195		
	ORB 3674, PG 685		
	ORB 3067, PG 433		
	ORB 3764, PG 690		
	ORB 4499, PG 591		
	ORB 16052, PG 4880		
	ORB 5004, PG 473		
	ORB 4994, PG 368		
	DEED UNKNOWN		

STA. 172+42.46 - SEE ABOVE RIGHT

END STA. 197+53.26

SURVEYORS' NOTES AND REPORT:

1. Legal descriptions used were taken from title "Real Estate Certification-Canal Rehabilitation within the C-100A Right of Way - located in Sections 10, 11, 14, 22, 23, 27 and 34, Township 55 South, Range 40 East, Miami-Dade County, Florida by Mike Dobish, senior title examiner, Title and Closing, Real Estate Section, Land Resources Bureau, dated December 20, 2012 and accompanying documents.
2. Record documents shown in addition to those in legend identify chain of transfer in order of first to last.
3. No search of the Public Records was performed by GCY Incorporated.
4. ORB, PG Denotes Official Record Book and page.
5. PB, PG Denotes Plat Book and page.

GCY
INCORPORATED
PROFESSIONAL SURVEYORS AND MAPPERS
CERTIFICATE OF AUTHORIZATION LB 4108
PO BOX 1468 • 1505 SW MARTIN HWY.
PALM CITY, FL 34991
(800) 386-1066

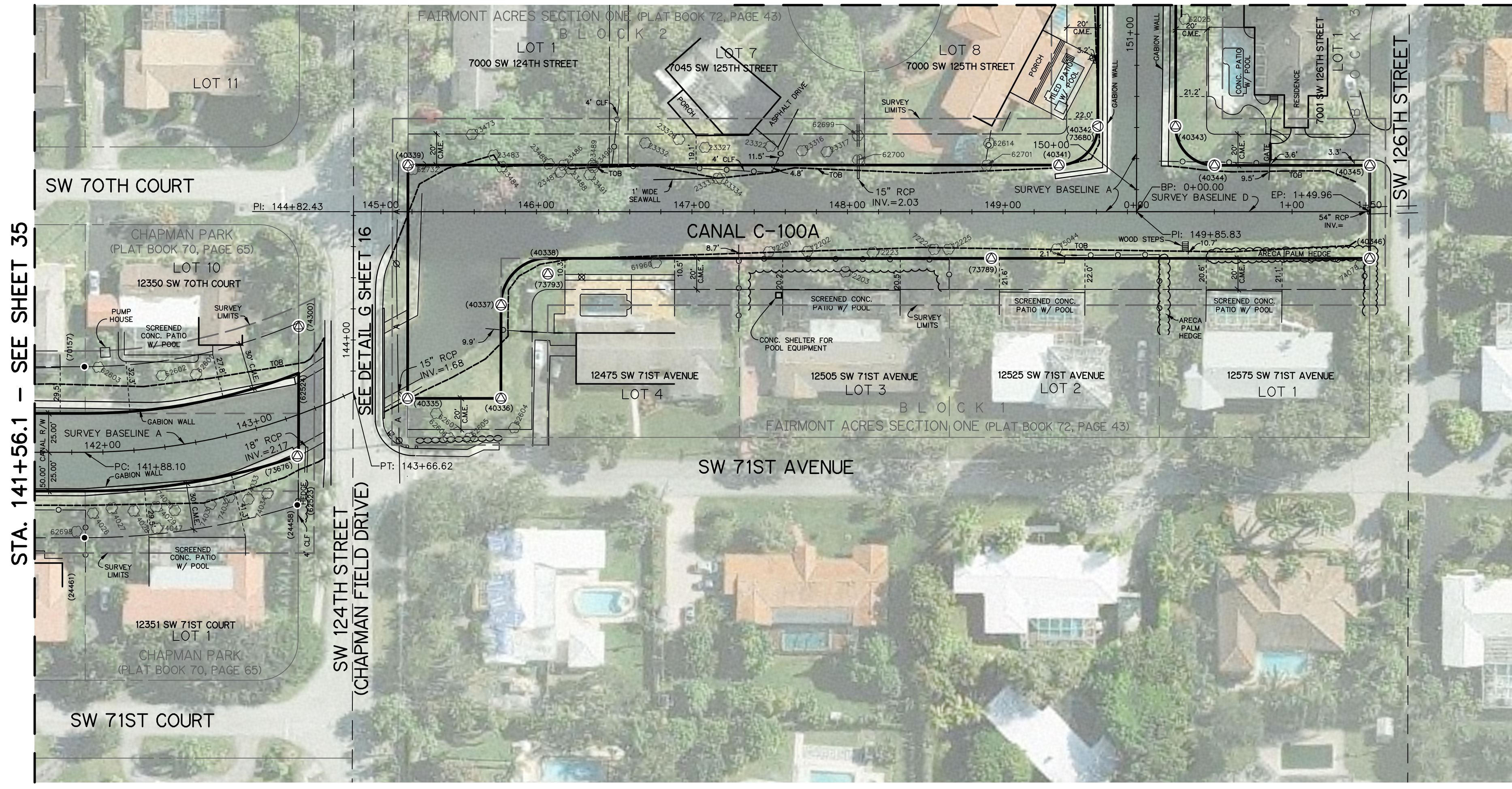
CANAL 100A BANK STABILIZATION
BOUNDARY & TOPOGRAPHIC
MIAMI-DADE, FLORIDA
SECTIONS 10, 11, & 14
TOWNSHIP 55 SOUTH
RANGE 40 EAST

DRAWN: RAH | CHECKED: GCT | DATE: 6/27/14 | SCALE: AS SHOWN
FIELD PERSONS: LUCAS YOUNG & BRIAN YANCY
FIELD DATES: JUNE 18, 2014
FIELD BOOKS: 1723, 1724, 1726, 1728, 1731, 1734, & 1736
PAGES: 1-82, 1-78, 1-79, 1-79, 1-79, 1-17, & 1-70
DATA COLLECTOR FILE(S): MULTIPLE

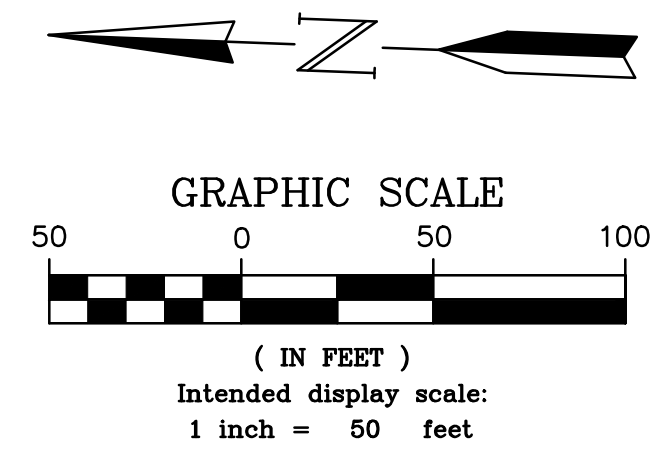
SOUTH FLORIDA WATER MANAGEMENT DISTRICT
INFRASTRUCTURE MANAGEMENT BUREAU - SURVEY AND MAPPING SECTION
P.O. BOX 24680
3301 GUN CLUB ROAD
WEST PALM BEACH, FLORIDA 33416-4680

NO.	DATE	CHECKED	DRAWN	PA	REVISED
1	07/24/14		RAH		ADJUSTED TEXT PER SP/MD

STA. 151+18.8 – SEE SHEET 37

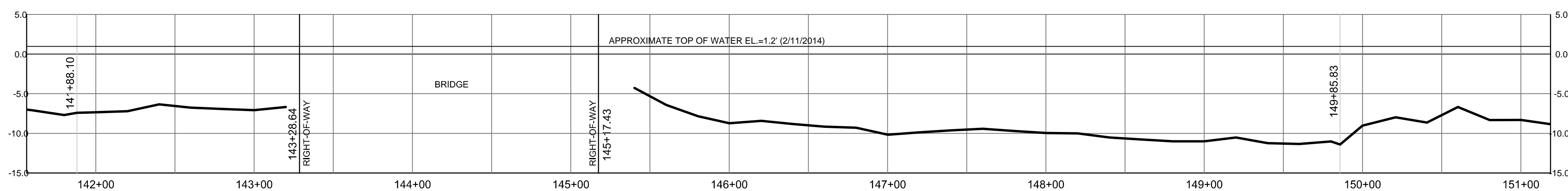


TREE INFORMATION					
Point Number	Northing	Eastng	Latitude	Longitude	Size & Description
23316	480891.573	883987.452	N25°39'17.949"	W80°18'30.221"	10" Coconut
23317	480875.714	883987.361	N25°39'17.792"	W80°18'30.223"	10" Coconut
23322	480912.023	883989.457	N25°39'18.152"	W80°18'30.198"	14" Gumbo Limbo
23327	480954.081	883987.159	N25°39'18.569"	W80°18'30.221"	14" Mahogany
23328	480971.006	883991.632	N25°39'18.736"	W80°18'30.171"	18" Mahogany
23332	480992.547	883988.54	N25°39'18.949"	W80°18'30.204"	8" Mango
23333	480945.073	883967.69	N25°39'18.48"	W80°18'30.434"	14" Calophyllum
23334	480942.703	883967.315	N25°39'18.457"	W80°18'30.438"	16" Calophyllum
23473	481104.168	883989.752	N25°39'20.055"	W80°18'30.184"	36" Ficus
23483	481089.629	883977.107	N25°39'19.912"	W80°18'30.323"	36" Orchid Tree
23484	481084.361	883969.722	N25°39'19.86"	W80°18'30.404"	18" Gumbo Limbo
23485	481053.963	883972.721	N25°39'19.559"	W80°18'30.373"	6" Schefflera
23486	481044.45	883972.346	N25°39'19.464"	W80°18'30.378"	6" Schefflera
23487	481046.324	883967.71	N25°39'19.483"	W80°18'30.428"	16" Orchid Tree
23488	481039.932	883970.051	N25°39'19.42"	W80°18'30.403"	36" Schefflera
23489	481025.856	883972.787	N25°39'19.28"	W80°18'30.374"	4" Gumbo Limbo
23490	481025.052	883971.607	N25°39'19.272"	W80°18'30.387"	4" Gumbo Limbo
23491	481027.487	883966.788	N25°39'19.297"	W80°18'30.439"	20" Orchid Tree
61960	480982.875	883911.722	N25°39'18.858"	W80°18'31.044"	8" Tamarind
62025	480648.844	884081.329	N25°39'19.54"	W80°18'29.209"	18" Orchid tree
62601	481275.518	883828.849	N25°39'21.76"	W80°18'31.933"	10" Coconut
62602	481297.344	883827.225	N25°39'21.977"	W80°18'31.949"	8" Mango
62603	481338.413	883831.035	N25°39'21.383"	W80°18'31.905"	4" Mango
62604	481069.635	883802.339	N25°39'19.723"	W80°18'32.234"	8" Senna
62605	481098.268	883794.642	N25°39'20.007"	W80°18'32.316"	8" Coconut
62606	481111.474	883794.102	N25°39'20.137"	W80°18'32.322"	9" Coconut
62607	481120.207	883809.598	N25°39'20.223"	W80°18'32.152"	10" Senna
62614	480771.521	883996.758	N25°39'16.76"	W80°18'30.126"	24" Gumbo Limbo
62698	481348.462	883724.946	N25°39'22.488"	W80°18'33.064"	14" Cassia Javanica
62699	480856.024	883998.463	N25°39'17.597"	W80°18'30.103"	20" Gumbo Limbo
62700	480855.43	883982.89	N25°39'17.592"	W80°18'30.273"	12" Gumbo Limbo
62701	480772.614	883982.563	N25°39'16.771"	W80°18'30.281"	10" Gumbo Limbo
62732	481140.962	883965.812	N25°39'20.421"	W80°18'30.443"	8" Schefflera
72201	480910.44	883921.656	N25°39'18.14"	W80°18'30.939"	20" Orchid tree
72202	480885.645	883922.896	N25°39'17.894"	W80°18'30.927"	36" Bottle Brush
72203	480860.804	883910.65	N25°39'17.649"	W80°18'31.062"	12" Mango
72223	480843.656	883923.855	N25°39'17.478"	W80°18'30.919"	24" Royal Poinciana
72224	480804.224	883927.2	N25°39'17.087"	W80°18'30.885"	24" Bottle Brush
72225	480795.08	883927.722	N25°39'16.997"	W80°18'30.879"	24" Gumbo Limbo
74026	481338.349	883737.114	N25°39'22.388"	W80°18'32.931"	9" Queen Palm
74027	481326.353	883740.89	N25°39'22.269"	W80°18'32.891"	11" Queen Palm
74028	481312.229	883739.542	N25°39'22.129"	W80°18'32.906"	10" Queen Palm
74029	481297.904	883742.741	N25°39'21.987"	W80°18'32.872"	10" Queen Palm
74030	481285.716	883740.804	N25°39'21.866"	W80°18'32.894"	9" Queen Palm
74031	481262.992	883745.531	N25°39'21.641"	W80°18'32.844"	9" Queen Palm
74032	481251.081	883750.349	N25°39'21.522"	W80°18'32.792"	10" Queen Palm
74033	481238.76	883749.795	N25°39'21.4"	W80°18'32.799"	11" Queen Palm
74034	481226.656	883754.048	N25°39'21.28"	W80°18'32.753"	9" Queen Palm
74045	481249.55	883736.081	N25°39'21.508"	W80°18'32.948"	72" Travelers Palm
74047	481296.814	883728.989	N25°39'21.977"	W80°18'33.023"	6" Montgomery
74078	480529.803	883928.5	N25°39'14.369"	W80°18'30.886"	12" Gumbo Limbo
75044	480725.59	883930.531	N25°39'16.308"	W80°18'30.853"	6" Gumbo Limbo
75057	478631.795	884628.894	N25°38'55.534"	W80°18'23.341"	6" Montgomery

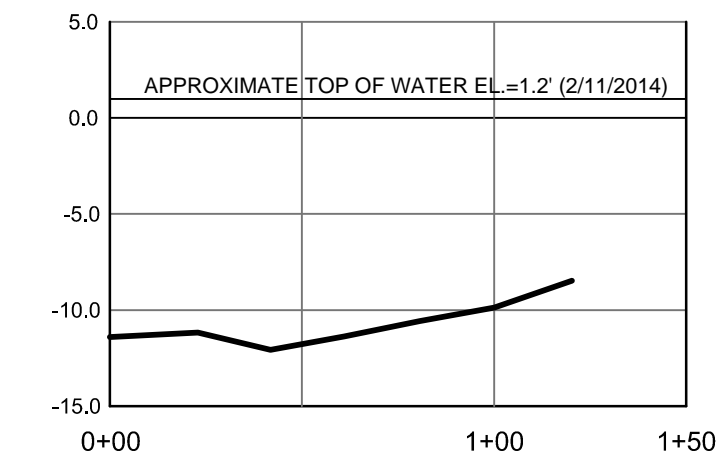


STA. 141+56.1 – SEE SHEET 35

SEE DETAIL G SHEET 16



SURVEY BASELINE 'A' PROFILE
 (Intended Horizontal Display Scale: 1"=50')
 (Intended Vertical Display Scale: 1"=5')



SURVEY BASELINE 'D' PROFILE
 (Intended Horizontal Display Scale: 1"=50')
 (Intended Vertical Display Scale: 1"=5')

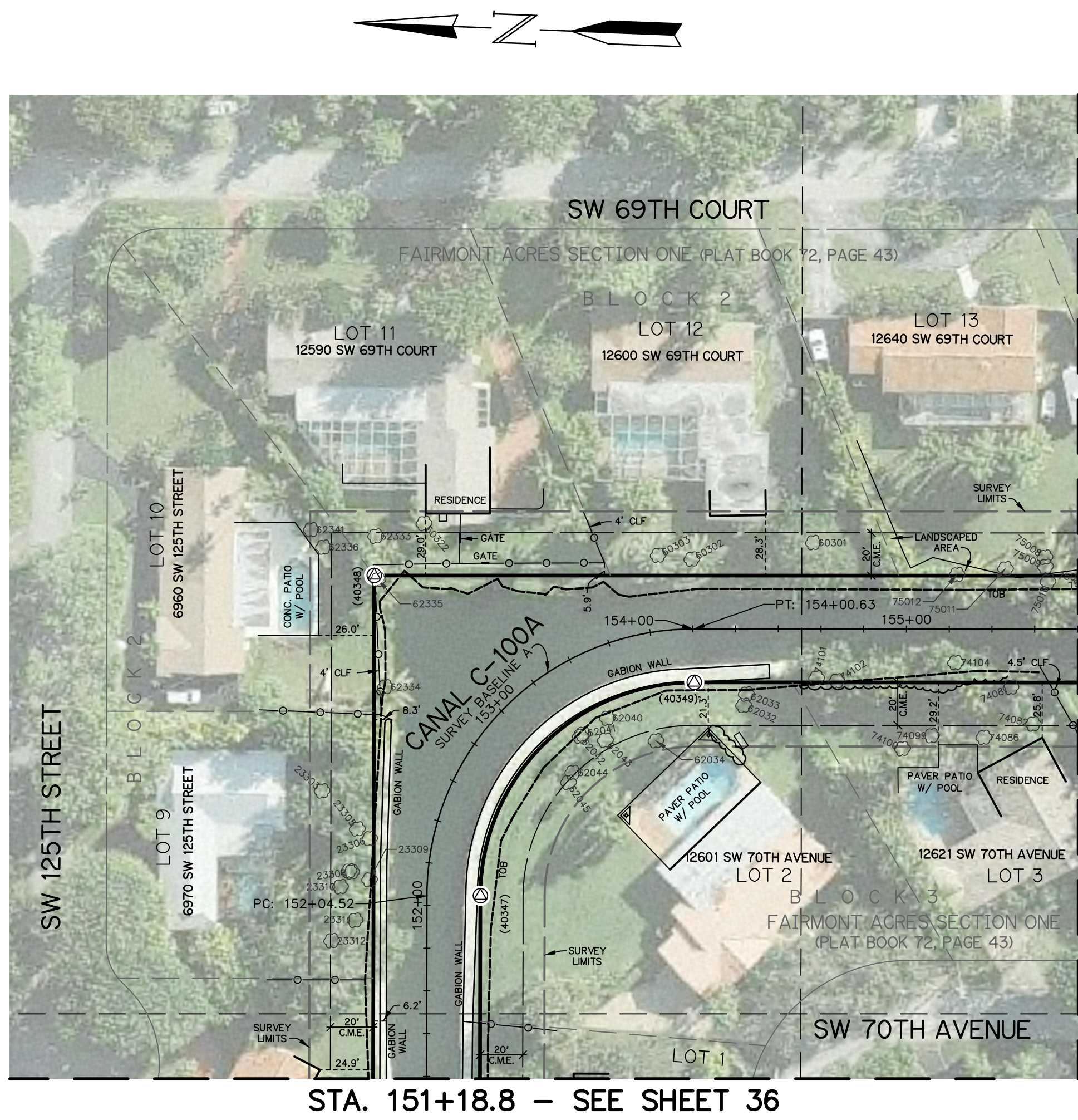
SOUTH FLORIDA WATER MANAGEMENT DISTRICT
 INFRASTRUCTURE MANAGEMENT BUREAU – SURVEY AND MAPPING SECTION
 P. O. BOX 24680
 3301 GUN CLUB ROAD
 WEST PALM BEACH, FLORIDA 33416-4680

CANAL 100A BANK STABILIZATION
 BOUNDARY & TOPOGRAPHIC
 MIAMI-DADE, FLORIDA
 SECTIONS 10, 11, & 14
 TOWNSHIP 55 SOUTH
 RANGE 40 EAST

DRAWN: JHY | CHECKED: GY | DATE: 6/27/14 | SCALE: AS SHOWN
 FIELD PERSONS: LUCAS YOUNG & BRIAN YANCY
 FIELD DATES: JUNE 18, 2014
 FIELD BOOKS: 1723, 1724, 1725, 1726, 1728, 1731, 1734, & 1736
 PAGE(S): 1-82, 1-78, 1-79, 1-79, 1-79, 1-17, & 1-74
 DATA COLLECTOR FILE(S): MULTIPLE

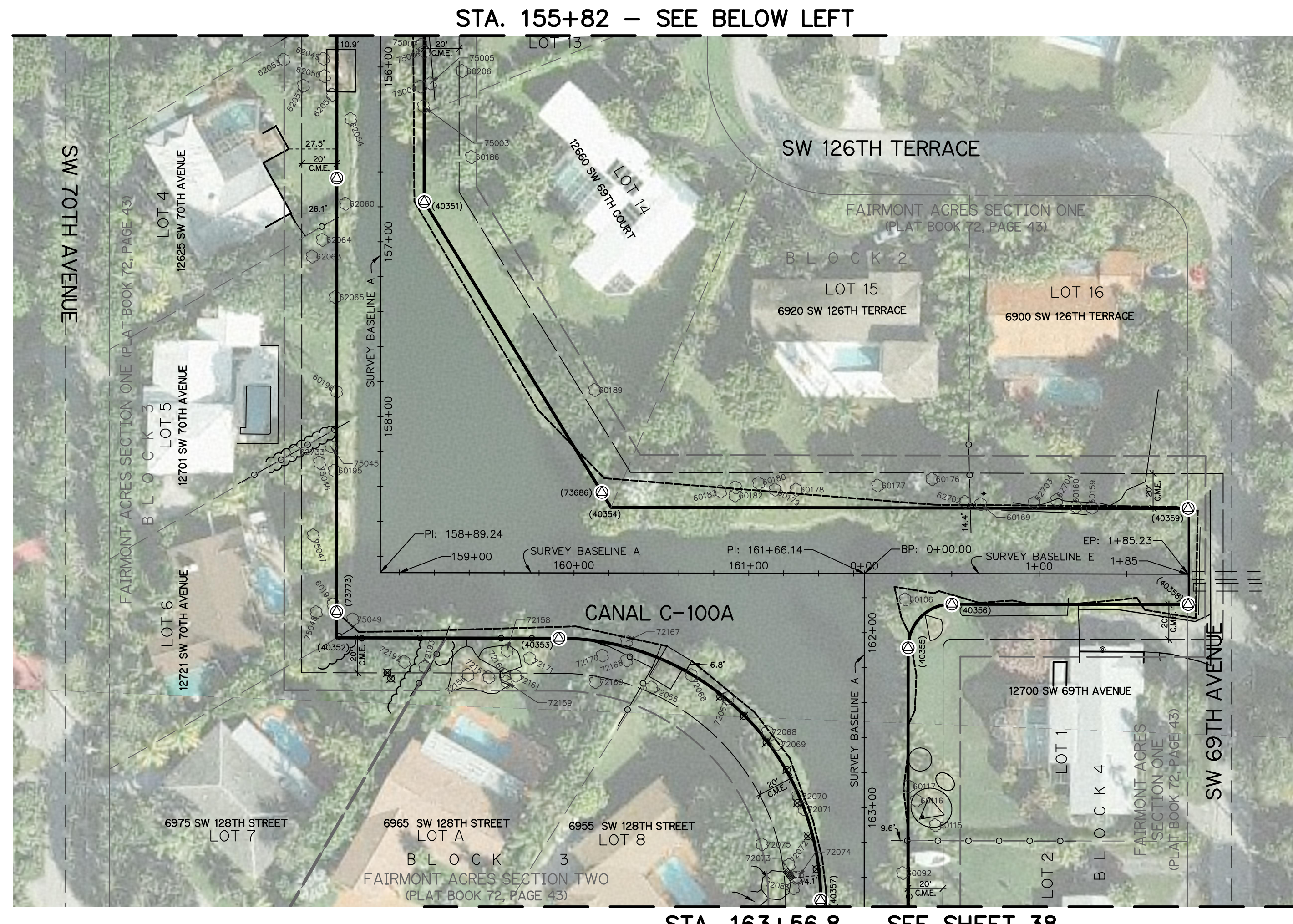
CADD FILE NO. 13-1009-06
 DRAWING NO. _____
 SHEET 36 OF 68



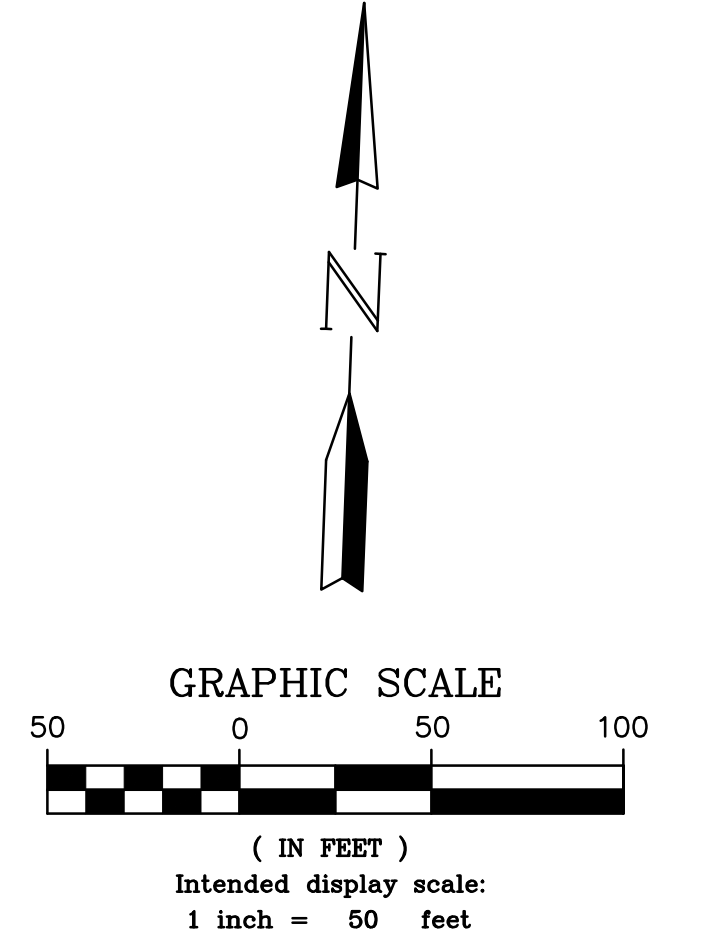


STA. 151+18.8 - SEE SHEET 36

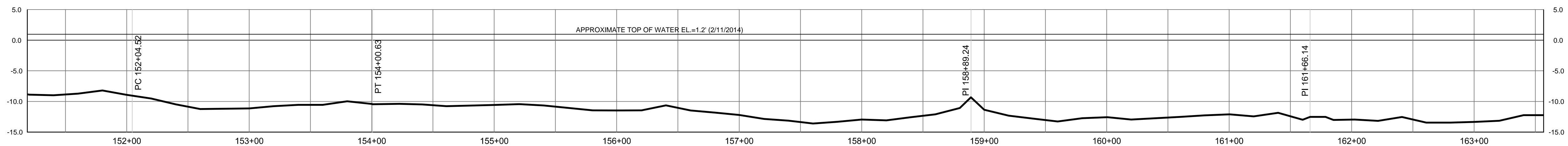
STA. 155+82 - SEE ABOVE RIGHT



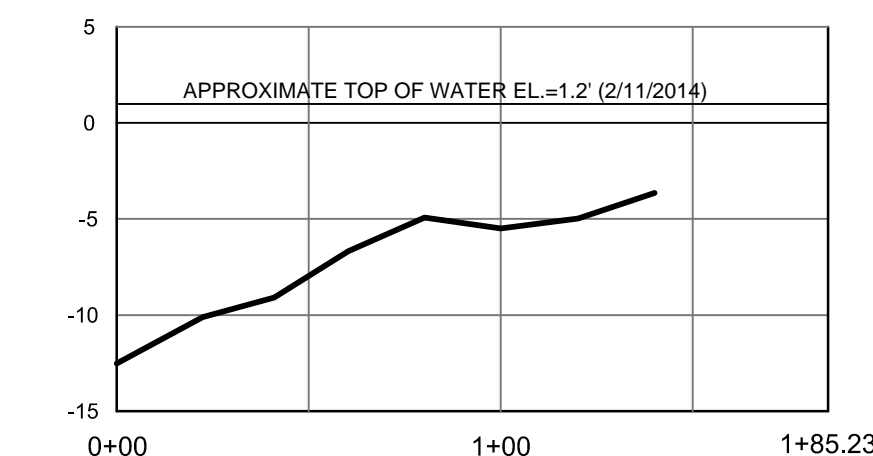
STA. 163+56.8 - SEE SHEET 38



FOR TREE INFORMATION
SEE SHEET 68



SURVEY BASELINE 'A' PROFILE
(Intended Horizontal Display Scale: 1"=50')
(Intended Vertical Display Scale: 1"=5')



SURVEY BASELINE 'E' PROFILE
(Intended Horizontal Display Scale: 1"=50')
(Intended Vertical Display Scale: 1"=5')

DRIVING: JHY	CHECKED: JHY	DATE: 6/27/14	SCALE: AS SHOWN
FIELD PERSON(S): LUCAS YOUNG & BRIAN YANCY			
FIELD DATE(S): JUNE 18, 2014			
FIELD BOOK(S): 1723, 1724, 1725, 1726, 1727, 1728, & 1729			
PAGE(S): 1-80, 1-78, 1-79, 1-79, 1-79, 1-17, & 1-70			
DATA COLLECTOR FILE(S): MULTIPLE			

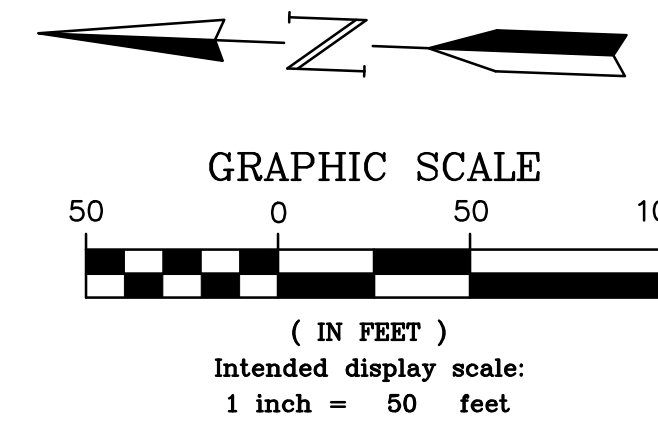
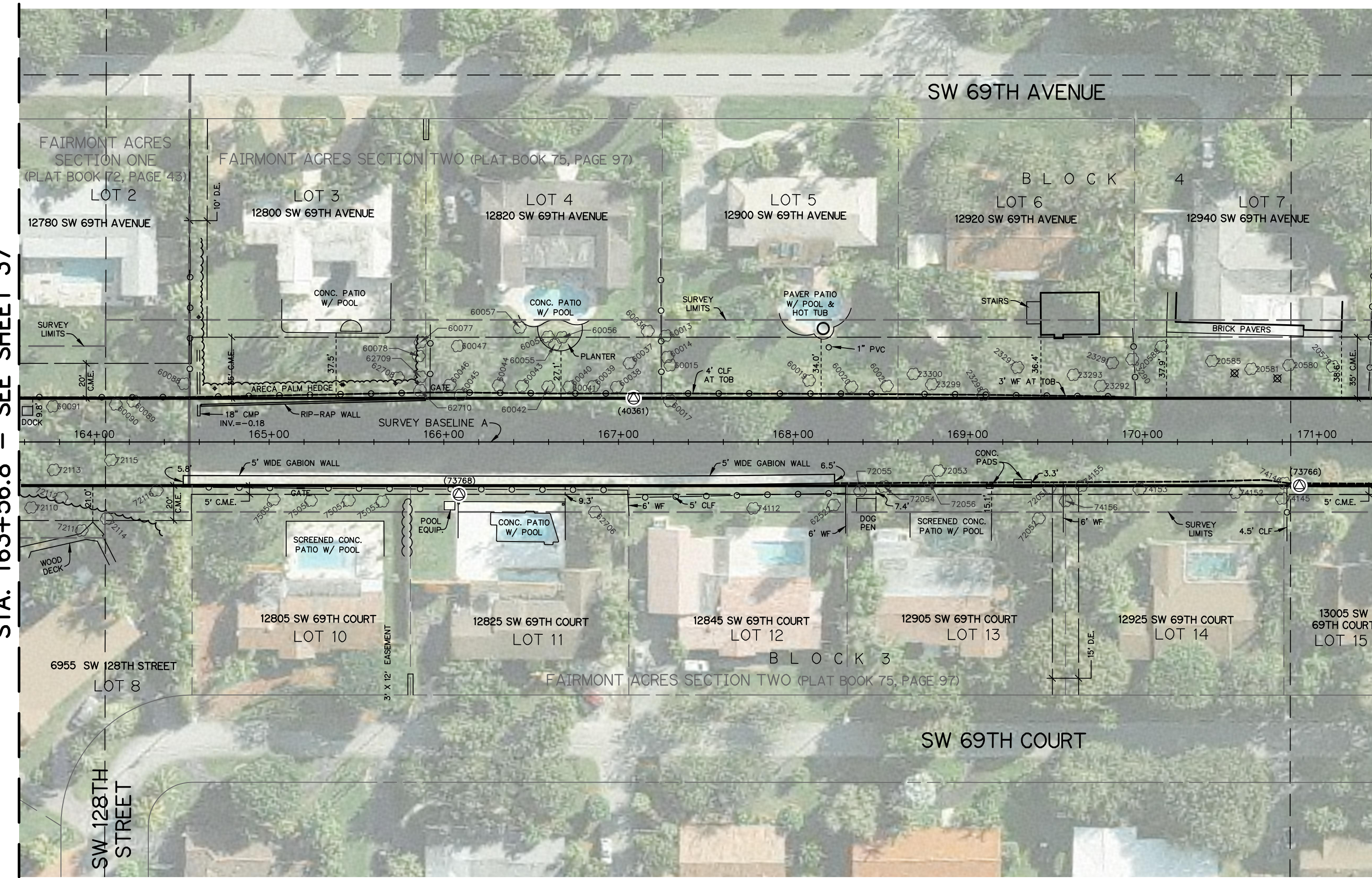
CANAL 100A BANK STABILIZATION
BOUNDARY & TOPOGRAPHIC
MIAMI-DADE, FLORIDA
SECTIONS 10, 11, & 14
TOWNSHIP 55 SOUTH
RANGE 40 EAST

CADD FILE NO. 13-1009-06
DRAWING NO. 37 SHEET OF 68

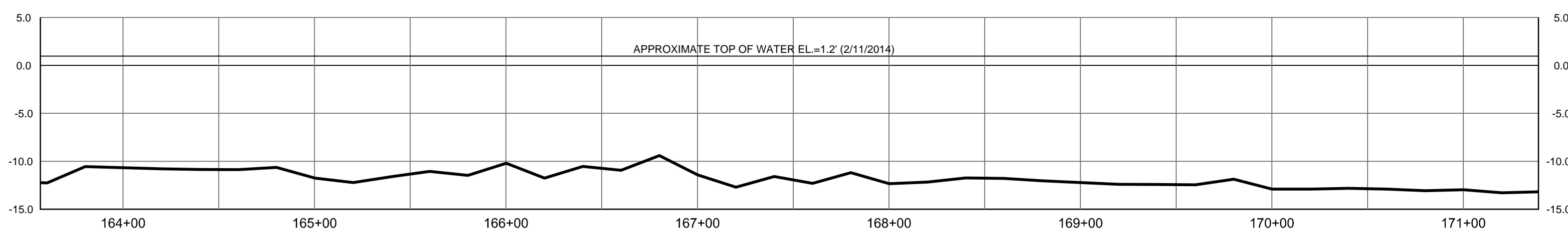


STA. 163+56.8 - SEE SHEET 37

STA. 171+39.3 - SEE SHEET 39



TREE INFORMATION					
Point Number	Northing	Easting	Latitude	Longitude	Size & Description
20482	479116.31	884671.46	N25°39'0.331"	W80°18'22.848"	6" Oil Palm
20579	479144.28	884678.77	N25°39'0.607"	W80°18'22.767"	10" Senna
20580	479169.33	884678.57	N25°39'0.855"	W80°18'22.767"	12" Live Oak
20581	479190.93	884675.52	N25°39'1.069"	W80°18'22.799"	12" Live Oak
20585	479213.54	884679.23	N25°39'1.293"	W80°18'22.758"	12" Live Oak
20588	479242.73	884686.43	N25°39'1.582"	W80°18'22.677"	16" Senna
23290	479259.18	884678.58	N25°39'1.745"	W80°18'22.762"	3" Alexander
23291	479270.56	884675.90	N25°39'1.858"	W80°18'22.791"	4" Hurricane
23292	479276.70	884662.55	N25°39'1.92"	W80°18'22.936"	26" Live Oak
23293	479292.41	884668.30	N25°39'2.075"	W80°18'22.873"	14" Live Oak
23297	479324.63	884671.29	N25°39'2.394"	W80°18'22.838"	24" Live Oak
23298	479343.47	884654.90	N25°39'2.581"	W80°18'23.016"	12" Chinese Fan Palm
23299	479373.30	884659.80	N25°39'2.877"	W80°18'22.961"	18" Live Oak
23300	479384.04	884665.28	N25°39'2.983"	W80°18'22.9"	6" Thatch Palm
60013	479526.23	884680.81	N25°39'4.39"	W80°18'22.722"	10" Avacado
60014	479525.20	884669.65	N25°39'4.381"	W80°18'22.844"	8" Montgomery
60015	479523.28	884664.96	N25°39'4.362"	W80°18'22.896"	8" Montgomery
60017	479522.69	884644.55	N25°39'4.357"	W80°18'23.119"	24" Schefflera
60019	479443.56	884659.32	N25°39'3.572"	W80°18'22.962"	6" Orchid Tree
60020	479419.22	884656.50	N25°39'3.332"	W80°18'22.994"	6" Sappodilla
60021	479398.99	884657.78	N25°39'3.131"	W80°18'22.981"	24" Maleuca
60036	479536.94	884684.00	N25°39'4.496"	W80°18'22.687"	12" Live Oak
60037	479546.61	884665.32	N25°39'4.593"	W80°18'22.891"	14" Live Oak
60038	479553.49	884651.37	N25°39'4.662"	W80°18'23.043"	12" Queen Palm
60039	479566.88	884651.26	N25°39'4.794"	W80°18'23.043"	12" Queen Palm
60040	479580.63	884650.48	N25°39'4.931"	W80°18'23.051"	12" Queen Palm
60041	479581.14	884650.24	N25°39'4.936"	W80°18'23.053"	12" Queen Palm
60042	479592.65	884650.15	N25°39'5.05"	W80°18'23.054"	6" Queen Palm
60043	479607.67	884649.89	N25°39'5.198"	W80°18'23.056"	8" Queen Palm
60044	479621.04	884649.81	N25°39'5.331"	W80°18'23.056"	8" Queen Palm
60045	479642.57	884643.46	N25°39'5.544"	W80°18'23.124"	8" Queen Palm
60046	479649.04	884648.90	N25°39'5.608"	W80°18'23.064"	8" Queen Palm
60047	479645.28	884671.37	N25°39'5.57"	W80°18'22.819"	24" Live Oak
60054	479593.92	884678.59	N25°39'5.061"	W80°18'22.743"	4" Alexander
60055	479589.79	884674.37	N25°39'5.02"	W80°18'22.789"	4" Alexander
60056	479585.83	884678.54	N25°39'5.981"	W80°18'22.744"	6" Christmas Palm
60057	479610.23	884683.25	N25°39'5.222"	W80°18'22.691"	6" Thatch Palm
60077	479666.72	884672.66	N25°39'5.782"	W80°18'22.803"	4" Alexander
60078	479667.44	884664.64	N25°39'5.79"	W80°18'22.891"	16" Bottle Palm
60088	479800.99	884643.75	N25°39'7.114"	W80°18'23.112"	8" Gumbo Limbo
60089	479829.66	884632.64	N25°39'7.398"	W80°18'23.231"	18" Royal Palm
60090	479839.63	884630.48	N25°39'7.497"	W80°18'23.254"	10" Coconut
60091	479875.62	884627.97	N25°39'7.854"	W80°18'23.28"	12" Coconut
62522	479426.70	884588.54	N25°39'3.409"	W80°18'23.736"	6" Mango
62706	479563.18	884579.38	N25°39'4.761"	W80°18'23.829"	20" Live Oak
62708	479678.76	884651.90	N25°39'5.902"	W80°18'23.03"	12" Coconut
62709	479665.92	884652.85	N25°39'5.775"	W80°18'23.02"	10" Foxtail
62710	479665.97	884645.22	N25°39'5.776"	W80°18'23.103"	10" Foxtail
72051	479303.77	884602.90	N25°39'2.191"	W80°18'23.586"	72" Banyan
72052	479309.20	884585.38	N25°39'2.246"	W80°18'23.778"	8" Mango
72053	479367.62	884610.49	N25°39'2.823"	W80°18'23.5"	12" Queen Palm
72054	479398.46	884600.19	N25°39'3.129"	W80°18'23.611"	26" Norfolk Pine
72055	479411.98	884597.27	N25°39'3.263"	W80°18'23.642"	10" Schefflera
72056	479372.88	884604.26	N25°39'2.875"	W80°18'23.568"	8" Cassia Javanica
72110	479885.81	884569.59	N25°39'7.958"	W80°18'23.917"	14" Live Oak
72111	479856.39	884557.59	N25°39'7.667"	W80°18'24.05"	6" Queen Palm
72112	479868.71	884575.87	N25°39'7.788"	W80°18'23.85"	12" Cassia Javanica
72113	479873.62	884591.61	N25°39'7.836"	W80°18'23.677"	32" Schefflera
72114	479842.40	884564.94	N25°39'7.528"	W80°18'23.97"	10" Coconut
72115	479841.12	884598.51	N25°39'7.513"	W80°18'23.604"	72" Banyan
72116	479814.32	884582.13	N25°39'7.249"	W80°18'23.784"	120" Banyan
74112	479472.74	884584.91	N25°39'3.865"	W80°18'23.773"	6" Avacado
74145	479170.46	884602.08	N25°39'0.87"	W80°18'23.603"	11" Coconut
74146	479169.33	884610.91	N25°39'0.859"	W80°18'23.507"	11" Coconut
74152	479197.17	884604.38	N25°39'1.135"	W80°18'23.576"	22" Bottlebrush
74153	479252.25	884604.30	N25°39'1.68"	W80°18'23.574"	36" Bottlebrush
74155	479285.28	884605.01	N25°39'2.008"	W80°18'23.565"	18" Avacado
74156	479294.14	884595.94	N25°39'2.096"	W80°18'23.663"	13" Queen Palm
75050	479747.22	884579.43	N25°39'6.584"	W80°18'23.818"	12" Queen Palm
75051	479725.94	884579.65	N25°39'6.374"	W80°18'23.816"	12" Queen Palm
75052	479704.26	884580.60	N25°39'6.159"	W80°18'23.807"	12" Queen Palm
75053	479685.05	884580.78	N25°39'5.968"	W80°18'23.806"	12" Queen Palm



SURVEY BASELINE 'A' PROFILE
(Intended Horizontal Display Scale: 1"=50')
(Intended Vertical Display Scale: 1"=5')

CANAL 100A BANK STABILIZATION
 BOUNDARY & TOPOGRAPHIC
 MIAMI-DADE, FLORIDA
 SECTIONS 10, 11, & 14
 TOWNSHIP 55 SOUTH
 RANGE 40 EAST

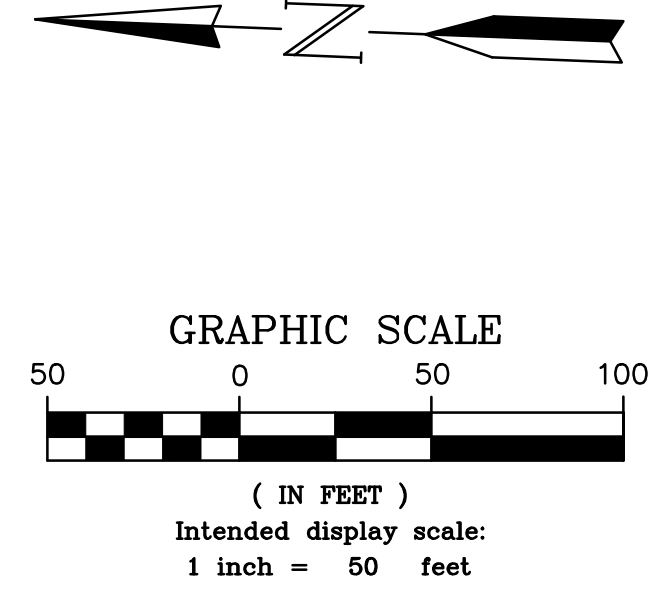
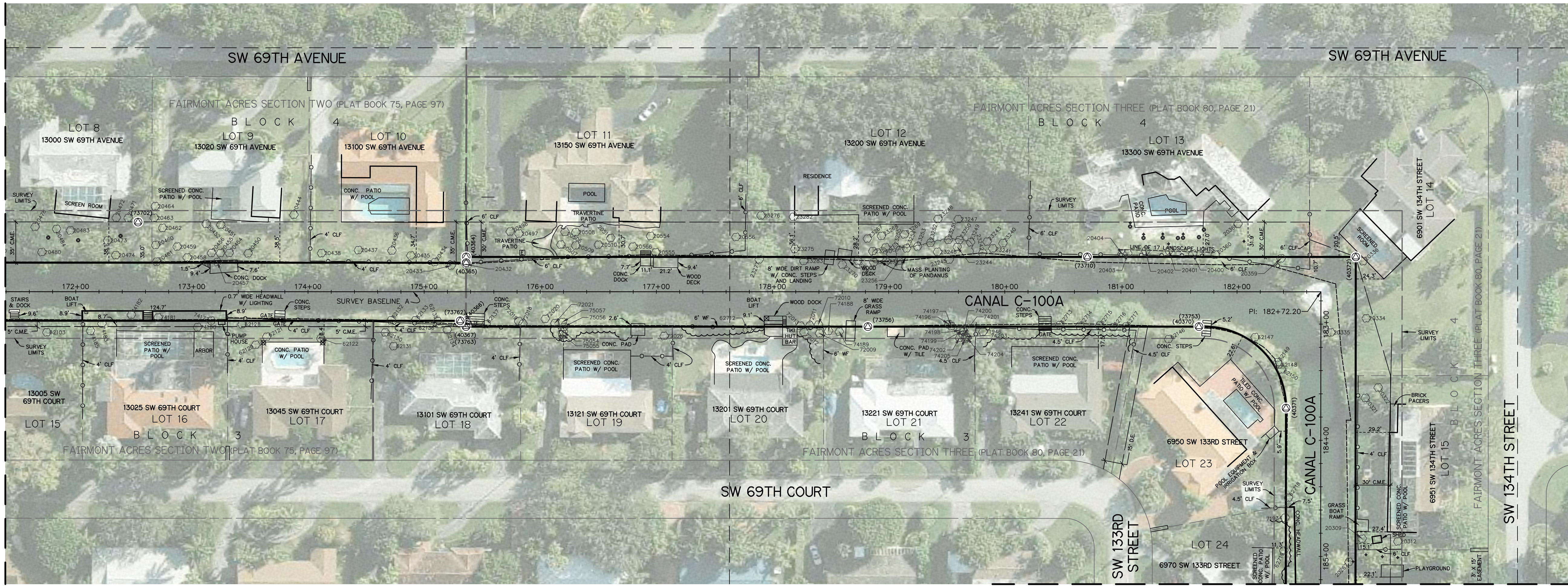
SOUTH FLORIDA WATER MANAGEMENT DISTRICT
 INFRASTRUCTURE MANAGEMENT BUREAU - SURVEY AND MAPPING SECTION
 P.O. BOX 24680
 3301 GUN CLUB ROAD
 WEST PALM BEACH, FLORIDA 33416-4680

DRAWN: JHY CHECKED: GY IMG. DATE: 6/27/14 SCALE: AS SHOWN
 FIELD PERSON(S): LUCAS YOUNG & BRIAN YANCY
 FIELD DATE(S): JUNE 18, 2014
 FIELD BOOK(S): 1723, 1724, 1725, 1726, 1727, 1728, 1729, 1730, 1731, 1734, & 1736
 PAGE(S): 1-80, 1-78, 1-79, 1-79, 1-79, 1-17, & 1-74
 DATA COLLECTOR FILE(S): MULTIPLE

CADD FILE NO. 13-1009-06
 DRAWING NO. 38 SHEET OF 68

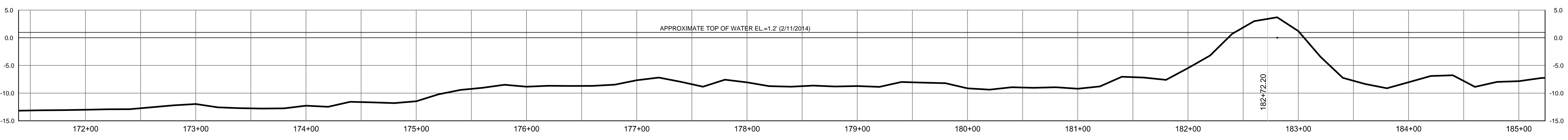


STA. 171+39.3 - SEE SHEET 38



FOR TREE INFORMATION
SEE SHEET 68

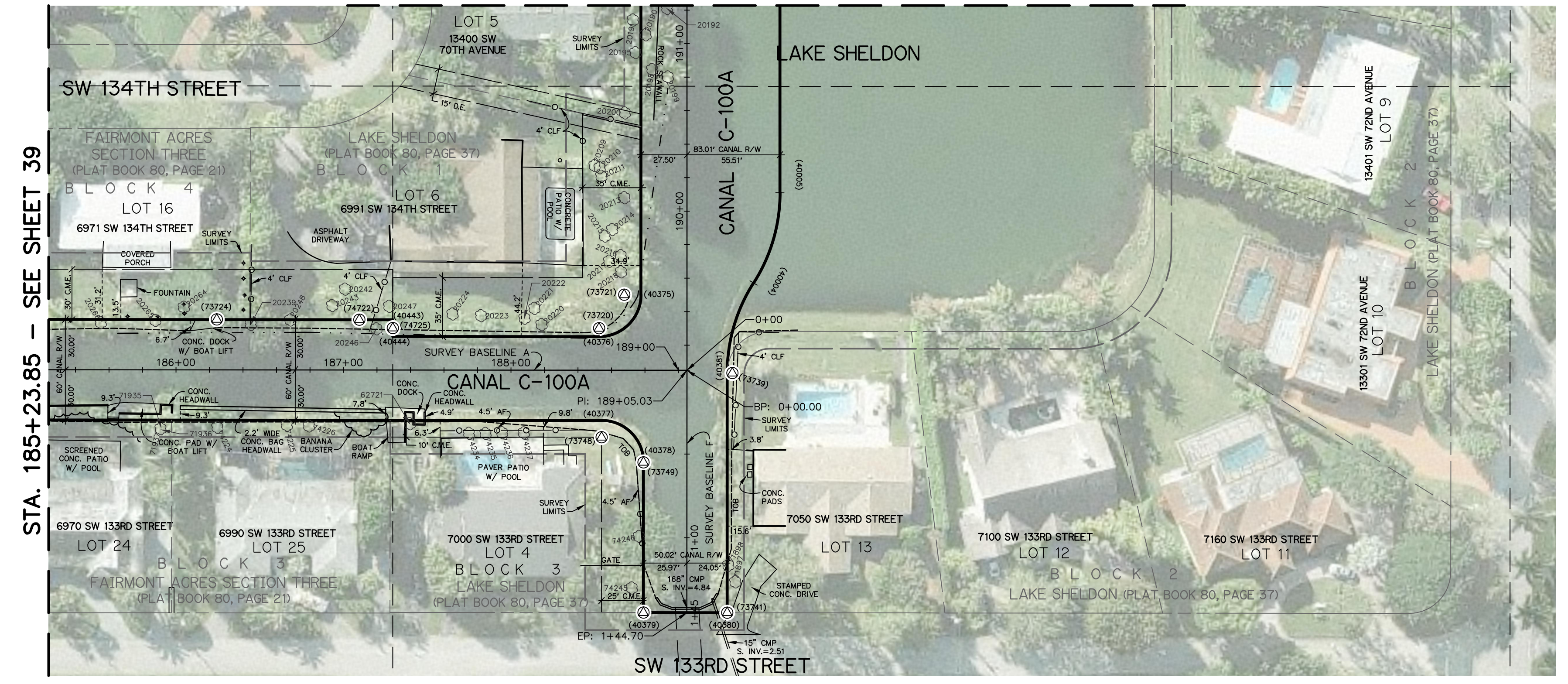
STA. 185+23.85 - SEE SHEET 40



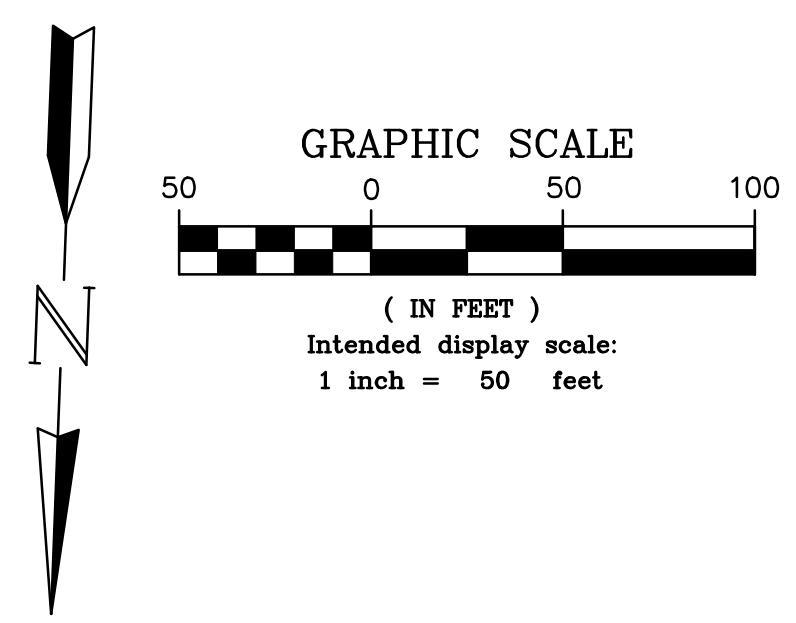
SURVEY BASELINE 'A' PROFILE
(Intended Horizontal Display Scale: 1"=50')
(Intended Vertical Display Scale: 1"=5')

<p>SOUTH FLORIDA WATER MANAGEMENT DISTRICT INFRASTRUCTURE MANAGEMENT BUREAU - SURVEY AND MAPPING SECTION P.O. BOX 24680 3301 GUN CLUB ROAD WEST PALM BEACH, FLORIDA 33416-4680</p>	<p>GENERAL REVISIONS</p> <table border="1"> <tr> <th>NO.</th> <th>DATE</th> <th>DESCRIPTION</th> </tr> <tr> <td>1</td> <td>8-28-14</td> <td>PA</td> </tr> <tr> <td>2</td> <td>8-28-14</td> <td>PA</td> </tr> <tr> <td>3</td> <td>8-28-14</td> <td>PA</td> </tr> <tr> <td>4</td> <td>8-28-14</td> <td>PA</td> </tr> <tr> <td>5</td> <td>8-28-14</td> <td>PA</td> </tr> <tr> <td>6</td> <td>8-28-14</td> <td>PA</td> </tr> <tr> <td>7</td> <td>8-28-14</td> <td>PA</td> </tr> <tr> <td>8</td> <td>8-28-14</td> <td>PA</td> </tr> <tr> <td>9</td> <td>8-28-14</td> <td>PA</td> </tr> <tr> <td>10</td> <td>8-28-14</td> <td>PA</td> </tr> <tr> <td>11</td> <td>8-28-14</td> <td>PA</td> </tr> <tr> <td>12</td> <td>8-28-14</td> <td>PA</td> </tr> <tr> <td>13</td> <td>8-28-14</td> <td>PA</td> </tr> <tr> <td>14</td> <td>8-28-14</td> <td>PA</td> </tr> <tr> <td>15</td> <td>8-28-14</td> <td>PA</td> </tr> <tr> <td>16</td> <td>8-28-14</td> <td>PA</td> </tr> <tr> <td>17</td> <td>8-28-14</td> <td>PA</td> </tr> <tr> <td>18</td> <td>8-28-14</td> <td>PA</td> </tr> <tr> <td>19</td> <td>8-28-14</td> <td>PA</td> </tr> <tr> <td>20</td> <td>8-28-14</td> <td>PA</td> </tr> <tr> <td>21</td> <td>8-28-14</td> <td>PA</td> </tr> <tr> <td>22</td> <td>8-28-14</td> <td>PA</td> </tr> <tr> <td>23</td> <td>8-28-14</td> <td>PA</td> </tr> <tr> <td>24</td> <td>8-28-14</td> <td>PA</td> </tr> <tr> <td>25</td> <td>8-28-14</td> <td>PA</td> </tr> <tr> <td>26</td> <td>8-28-14</td> <td>PA</td> </tr> <tr> <td>27</td> <td>8-28-14</td> <td>PA</td> </tr> <tr> <td>28</td> <td>8-28-14</td> <td>PA</td> </tr> <tr> <td>29</td> <td>8-28-14</td> <td>PA</td> </tr> <tr> <td>30</td> <td>8-28-14</td> <td>PA</td> </tr> <tr> <td>31</td> <td>8-28-14</td> <td>PA</td> </tr> <tr> <td>32</td> <td>8-28-14</td> <td>PA</td> </tr> <tr> <td>33</td> <td>8-28-14</td> <td>PA</td> </tr> <tr> <td>34</td> <td>8-28-14</td> <td>PA</td> </tr> <tr> <td>35</td> <td>8-28-14</td> <td>PA</td> </tr> <tr> <td>36</td> <td>8-28-14</td> <td>PA</td> </tr> <tr> <td>37</td> <td>8-28-14</td> <td>PA</td> </tr> <tr> <td>38</td> <td>8-28-14</td> <td>PA</td> </tr> <tr> <td>39</td> <td>8-28-14</td> <td>PA</td> </tr> <tr> <td>40</td> <td>8-28-14</td> <td>PA</td> </tr> <tr> <td>41</td> <td>8-28-14</td> <td>PA</td> </tr> <tr> <td>42</td> <td>8-28-14</td> <td>PA</td> </tr> <tr> <td>43</td> <td>8-28-14</td> <td>PA</td> </tr> <tr> <td>44</td> <td>8-28-14</td> <td>PA</td> </tr> <tr> <td>45</td> <td>8-28-14</td> <td>PA</td> </tr> <tr> <td>46</td> <td>8-28-14</td> <td>PA</td> </tr> <tr> <td>47</td> <td>8-28-14</td> <td>PA</td> </tr> <tr> <td>48</td> <td>8-28-14</td> <td>PA</td> </tr> <tr> <td>49</td> <td>8-28-14</td> <td>PA</td> </tr> <tr> <td>50</td> <td>8-28-14</td> <td>PA</td> </tr> </table>	NO.	DATE	DESCRIPTION	1	8-28-14	PA	2	8-28-14	PA	3	8-28-14	PA	4	8-28-14	PA	5	8-28-14	PA	6	8-28-14	PA	7	8-28-14	PA	8	8-28-14	PA	9	8-28-14	PA	10	8-28-14	PA	11	8-28-14	PA	12	8-28-14	PA	13	8-28-14	PA	14	8-28-14	PA	15	8-28-14	PA	16	8-28-14	PA	17	8-28-14	PA	18	8-28-14	PA	19	8-28-14	PA	20	8-28-14	PA	21	8-28-14	PA	22	8-28-14	PA	23	8-28-14	PA	24	8-28-14	PA	25	8-28-14	PA	26	8-28-14	PA	27	8-28-14	PA	28	8-28-14	PA	29	8-28-14	PA	30	8-28-14	PA	31	8-28-14	PA	32	8-28-14	PA	33	8-28-14	PA	34	8-28-14	PA	35	8-28-14	PA	36	8-28-14	PA	37	8-28-14	PA	38	8-28-14	PA	39	8-28-14	PA	40	8-28-14	PA	41	8-28-14	PA	42	8-28-14	PA	43	8-28-14	PA	44	8-28-14	PA	45	8-28-14	PA	46	8-28-14	PA	47	8-28-14	PA	48	8-28-14	PA	49	8-28-14	PA	50	8-28-14	PA
NO.	DATE	DESCRIPTION																																																																																																																																																								
1	8-28-14	PA																																																																																																																																																								
2	8-28-14	PA																																																																																																																																																								
3	8-28-14	PA																																																																																																																																																								
4	8-28-14	PA																																																																																																																																																								
5	8-28-14	PA																																																																																																																																																								
6	8-28-14	PA																																																																																																																																																								
7	8-28-14	PA																																																																																																																																																								
8	8-28-14	PA																																																																																																																																																								
9	8-28-14	PA																																																																																																																																																								
10	8-28-14	PA																																																																																																																																																								
11	8-28-14	PA																																																																																																																																																								
12	8-28-14	PA																																																																																																																																																								
13	8-28-14	PA																																																																																																																																																								
14	8-28-14	PA																																																																																																																																																								
15	8-28-14	PA																																																																																																																																																								
16	8-28-14	PA																																																																																																																																																								
17	8-28-14	PA																																																																																																																																																								
18	8-28-14	PA																																																																																																																																																								
19	8-28-14	PA																																																																																																																																																								
20	8-28-14	PA																																																																																																																																																								
21	8-28-14	PA																																																																																																																																																								
22	8-28-14	PA																																																																																																																																																								
23	8-28-14	PA																																																																																																																																																								
24	8-28-14	PA																																																																																																																																																								
25	8-28-14	PA																																																																																																																																																								
26	8-28-14	PA																																																																																																																																																								
27	8-28-14	PA																																																																																																																																																								
28	8-28-14	PA																																																																																																																																																								
29	8-28-14	PA																																																																																																																																																								
30	8-28-14	PA																																																																																																																																																								
31	8-28-14	PA																																																																																																																																																								
32	8-28-14	PA																																																																																																																																																								
33	8-28-14	PA																																																																																																																																																								
34	8-28-14	PA																																																																																																																																																								
35	8-28-14	PA																																																																																																																																																								
36	8-28-14	PA																																																																																																																																																								
37	8-28-14	PA																																																																																																																																																								
38	8-28-14	PA																																																																																																																																																								
39	8-28-14	PA																																																																																																																																																								
40	8-28-14	PA																																																																																																																																																								
41	8-28-14	PA																																																																																																																																																								
42	8-28-14	PA																																																																																																																																																								
43	8-28-14	PA																																																																																																																																																								
44	8-28-14	PA																																																																																																																																																								
45	8-28-14	PA																																																																																																																																																								
46	8-28-14	PA																																																																																																																																																								
47	8-28-14	PA																																																																																																																																																								
48	8-28-14	PA																																																																																																																																																								
49	8-28-14	PA																																																																																																																																																								
50	8-28-14	PA																																																																																																																																																								
<p>CANAL 100A BANK STABILIZATION BOUNDARY & TOPOGRAPHIC MIAMI-DADE, FLORIDA SECTIONS 10, 11, & 14 TOWNSHIP 55 SOUTH RANGE 40 EAST</p>	<p>SCALE AS SHOWN</p> <p>DATE: 6/27/14</p> <p>CHECKED BY: LUCAS YOUNG & BRIAN YANCY</p> <p>FIELD PERSONS: JUNE 18, 2014</p> <p>FIELD BOOKS: 1723, 1724, 1725, 1726, 1727, 1728, 1729, 1730, 1731, 1732, 1733, 1734, & 1735</p> <p>PAGE(S): 1-80, 1-78, 1-79, 1-79, 1-79, 1-17, 1-17, & 1-74</p> <p>DATA COLLECTOR FILE(S): MULTIPLE</p>																																																																																																																																																									
<p>GOY INCORPORATED PROFESSIONAL SURVEYORS AND MAPPERS CERTIFICATE OF AUTHORIZATION LB 4108 PO BOX 1468 • 1505 SW MARTIN HWY. PALM CITY, FL 34981 (800) 386-1066</p>	<p>CADD FILE NO. 13-1009-06 DRAWING NO. 39 SHEET OF 68</p>																																																																																																																																																									

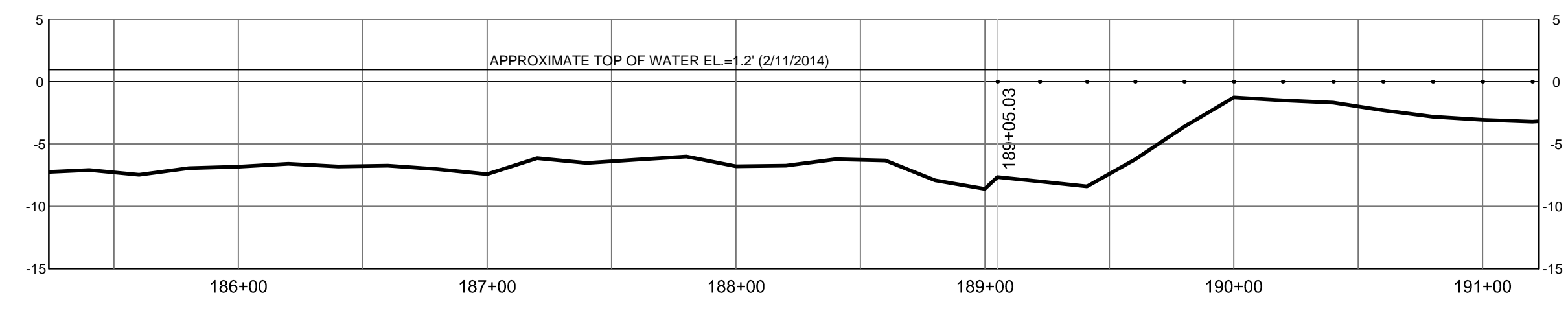
STA. 191+22.73 - SEE SHEET 41



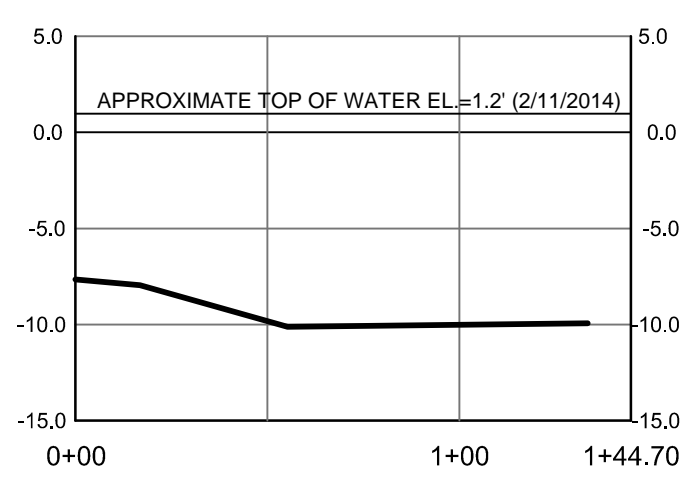
STA. 185+23.85 - SEE SHEET 39



TREE INFORMATION					
Point Number	Northing	Easting	Latitude	Longitude	Size & Description
20190	477757.46	884079.79	N25°38'46.902"	W80°18'29.391"	14" Coconut
20191	477748.93	884087.58	N25°38'46.817"	W80°18'29.307"	18" Bottle Palm
20192	477741.24	884067.58	N25°38'46.742"	W80°18'29.526"	4" Bald Cypress
20195	477768.32	884085.36	N25°38'47.011"	W80°18'29.333"	10" Montgomery Palm
20198	477778.02	884075.01	N25°38'47.166"	W80°18'29.442"	14" Coconut
20199	477782.08	884065.50	N25°38'47.147"	W80°18'29.546"	4" Bald Cypress
20200	477804.55	884090.36	N25°38'47.368"	W80°18'29.273"	30" Bishopwood
20209	477836.65	884107.23	N25°38'47.685"	W80°18'29.087"	14" Washingtonia Palm
20210	477837.79	884104.17	N25°38'47.697"	W80°18'29.121"	14" Washingtonia Palm
20211	477842.83	884102.95	N25°38'47.747"	W80°18'29.133"	14" Washingtonia Palm
20213	477855.11	884088.70	N25°38'47.869"	W80°18'29.288"	14" Washingtonia Palm
20214	477874.40	884095.26	N25°38'48.061"	W80°18'29.215"	14" Washingtonia Palm
20215	477878.50	884099.54	N25°38'48.111"	W80°18'29.168"	14" Washingtonia Palm
20216	477889.75	884089.49	N25°38'48.212"	W80°18'29.278"	14" Washingtonia Palm
20217	477893.34	884096.35	N25°38'48.247"	W80°18'29.202"	14" Washingtonia Palm
20218	477899.45	884089.00	N25°38'48.308"	W80°18'29.282"	14" Washingtonia Palm
20220	477932.65	884135.21	N25°38'48.635"	W80°18'28.776"	16" Washingtonia Palm
20221	477923.17	884139.88	N25°38'48.541"	W80°18'28.725"	16" Washingtonia Palm
20222	477929.26	884145.55	N25°38'48.616"	W80°18'28.663"	10" Mango
20223	477928.72	884171.53	N25°38'48.594"	W80°18'28.379"	10" Mango
20224	477928.36	884188.60	N25°38'48.589"	W80°18'28.192"	12" Queen Palm
20239	477939.20	884308.73	N25°38'48.691"	W80°18'26.879"	14" Gumbo Limbo
20242	477915.97	884253.26	N25°38'48.463"	W80°18'27.487"	17" Queen Palm
20243	477926.08	884260.59	N25°38'48.563"	W80°18'27.406"	12" Queen Palm
20246	477938.93	884233.69	N25°38'48.692"	W80°18'27.699"	40" Schefflera
20247	477925.23	884226.57	N25°38'48.556"	W80°18'27.778"	30" Schefflera
20248	477935.64	884285.23	N25°38'48.656"	W80°18'27.136"	18" Indian Rosewood
20264	477930.44	884349.05	N25°38'48.602"	W80°18'26.439"	24" Royal Poinciana
20265	477938.97	884365.77	N25°38'48.685"	W80°18'26.256"	12" Coconut
20266	477941.45	884398.25	N25°38'48.708"	W80°18'25.901"	10" Coconut
62721	477994.76	884211.54	N25°38'49.246"	W80°18'27.938"	10" Sabal Palm
71897	478081.74	884013.85	N25°38'50.118"	W80°18'30.093"	36" Bottle Brush
71898	478071.99	884018.36	N25°38'50.021"	W80°18'30.044"	12" Sabal Palm
71935	478002.56	884359.86	N25°38'49.315"	W80°18'26.317"	10" Fan Palm
71936	478003.96	884359.52	N25°38'49.329"	W80°18'26.321"	10" Fan Palm
71937	478003.58	884361.02	N25°38'49.325"	W80°18'26.304"	10" Fan Palm
74224	478001.29	884326.36	N25°38'49.305"	W80°18'26.683"	12" Avacado
74225	477998.45	884284.89	N25°38'49.279"	W80°18'27.136"	9" Canary Island Date
74226	477998.44	884271.70	N25°38'49.279"	W80°18'27.281"	12" Canary Island Date
74234	477999.20	884176.10	N25°38'49.292"	W80°18'28.325"	5" Christmas Palm
74235	477998.87	884166.19	N25°38'49.289"	W80°18'28.433"	5" Christmas Palm
74236	477998.07	884156.28	N25°38'49.281"	W80°18'28.542"	5" Christmas Palm
74237	477997.65	884143.34	N25°38'49.278"	W80°18'28.683"	5" Christmas Palm
74245	478087.73	884075.37	N25°38'50.174"	W80°18'29.421"	20" Black Olive
74246	478056.81	884072.29	N25°38'49.868"	W80°18'29.456"	42" Cassia Javanica



SURVEY BASELINE 'A' PROFILE
 (Intended Horizontal Display Scale: 1"=50')
 (Intended Vertical Display Scale: 1"=5')



SURVEY BASELINE 'F' PROFILE
 (Intended Horizontal Display Scale: 1"=50')
 (Intended Vertical Display Scale: 1"=5')

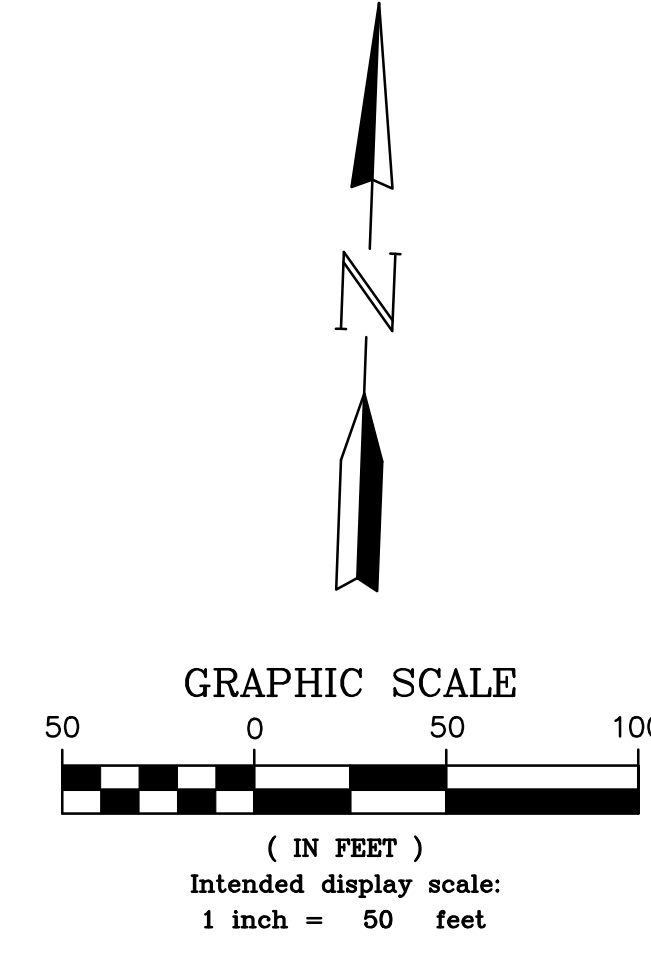
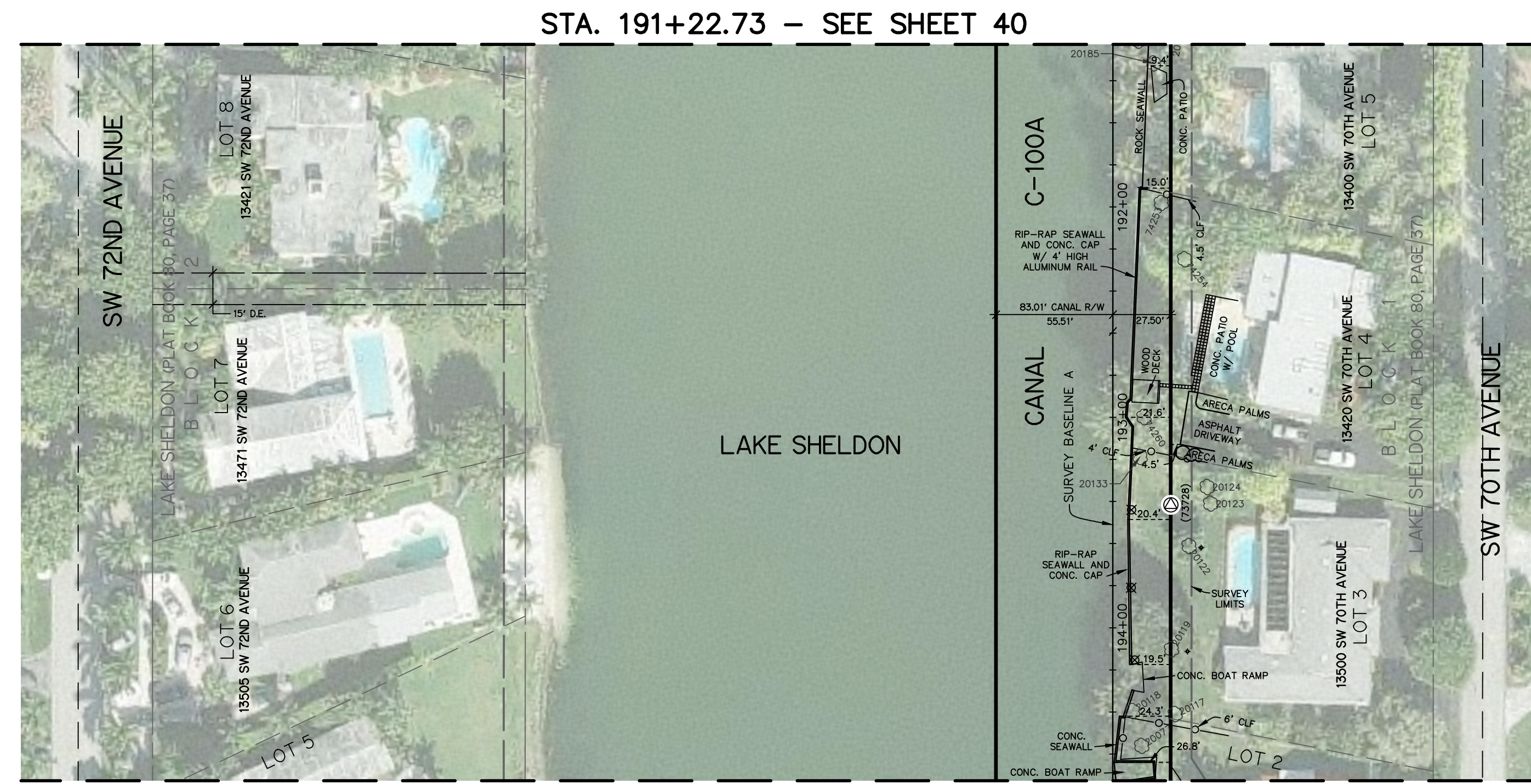
SOUTH FLORIDA WATER MANAGEMENT DISTRICT
 INFRASTRUCTURE MANAGEMENT BUREAU - SURVEY AND MAPPING SECTION
 P. O. BOX 24680
 3301 GUN CLUB ROAD
 WEST PALM BEACH, FLORIDA 33416-4680

CANAL 100A BANK STABILIZATION
 BOUNDARY & TOPOGRAPHIC
 MIAMI-DADE, FLORIDA
 SECTIONS 10, 11, & 14
 TOWNSHIP 55 SOUTH
 RANGE 40 EAST

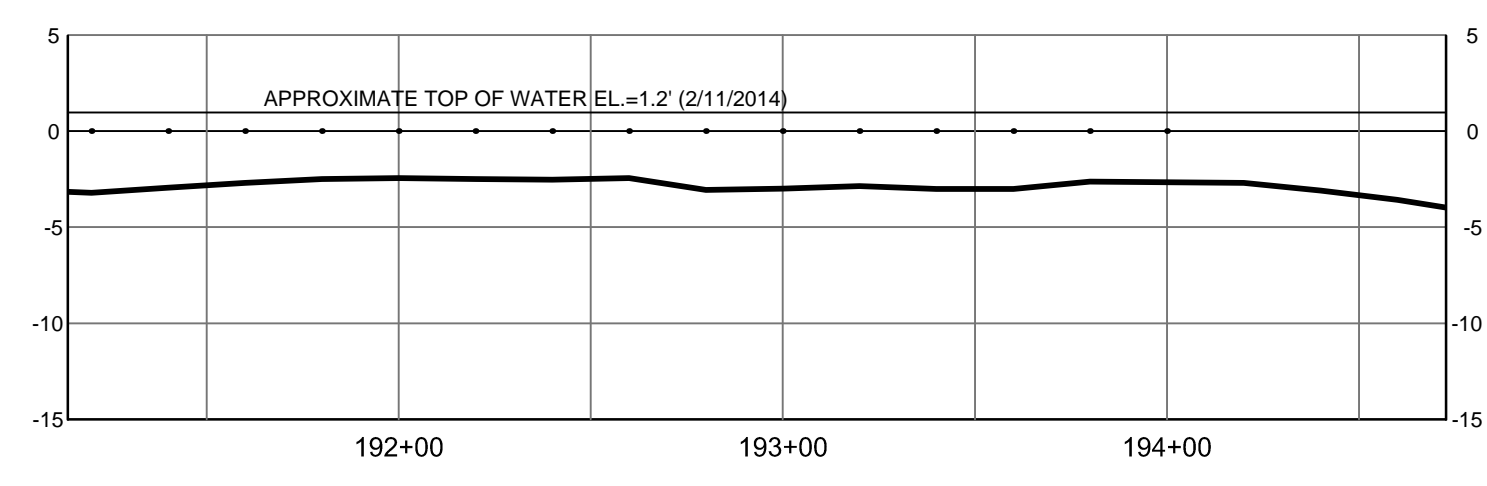
DRAWN: JHY | CHECKED: GY | DATE: 6/27/14 | SCALE: AS SHOWN
 FIELD PERSONS: LUCAS YOUNG & BRIAN YANCY
 FIELD DATES: JUNE 18, 2014
 FIELD BOOKS: 1723, 1724, 1725, 1726, 1728, 1731, 1734, & 1736
 PAGES: 1-82, 1-78, 1-79, 1-79, 1-17, 1-17, & 1-74
 DATA COLLECTOR FILE(S): MULTIPLE

CADD FILE NO. 13-1009-06
 DRAWING NO. _____
 SHEET 40 OF 68





TREE INFORMATION					
Point Number	Northing	Easting	Latitude	Longitude	Size & Description
20077	477406.38	884081.92	N25°38'43.425"	W80°18'29.388"	48" Gumbo Limbo
20117	477422.09	884097.23	N25°38'43.58"	W80°18'29.22"	14" Mango
20118	477422.75	884077.03	N25°38'43.587"	W80°18'29.441"	12" Coconut
20119	477452.78	884094.36	N25°38'43.884"	W80°18'29.249"	30" Sandalwood
20122	477502.12	884100.82	N25°38'44.372"	W80°18'29.176"	4" Mango
20123	477522.69	884110.26	N25°38'44.575"	W80°18'29.072"	12" Queen Palm
20124	477530.52	884108.37	N25°38'44.653"	W80°18'29.092"	10" Queen Palm
20133	477543.57	884075.93	N25°38'44.784"	W80°18'29.446"	10" Barbados Cherry
20185	477730.72	884075.22	N25°38'46.638"	W80°18'29.443"	12" Coconut
74253	477664.60	884081.41	N25°38'45.982"	W80°18'29.379"	9" Queen Palm
74254	477638.25	884093.51	N25°38'45.721"	W80°18'29.248"	15" Mango
74260	477562.59	884077.04	N25°38'44.972"	W80°18'29.432"	72" Australian Pine



SURVEY BASELINE 'A' PROFILE
(Intended Horizontal Display Scale: 1"=50')
(Intended Vertical Display Scale: 1"=5')

CANAL 100A BANK STABILIZATION
BOUNDARY & TOPOGRAPHIC
MIAMI-DADE, FLORIDA
SECTIONS 10, 11, & 14
TOWNSHIP 55 SOUTH
RANGE 40 EAST

13-1009-06
DRAWING NO.
SHEET **41** OF **68**

DRAINING: JHY | CHECKED: GY | DATE: 6/27/14 | SCALE: AS SHOWN

FIELD PERSON(S): LUCAS YOUNG & BRIAN YANCY

FIELD DATES: JUNE 18, 2014

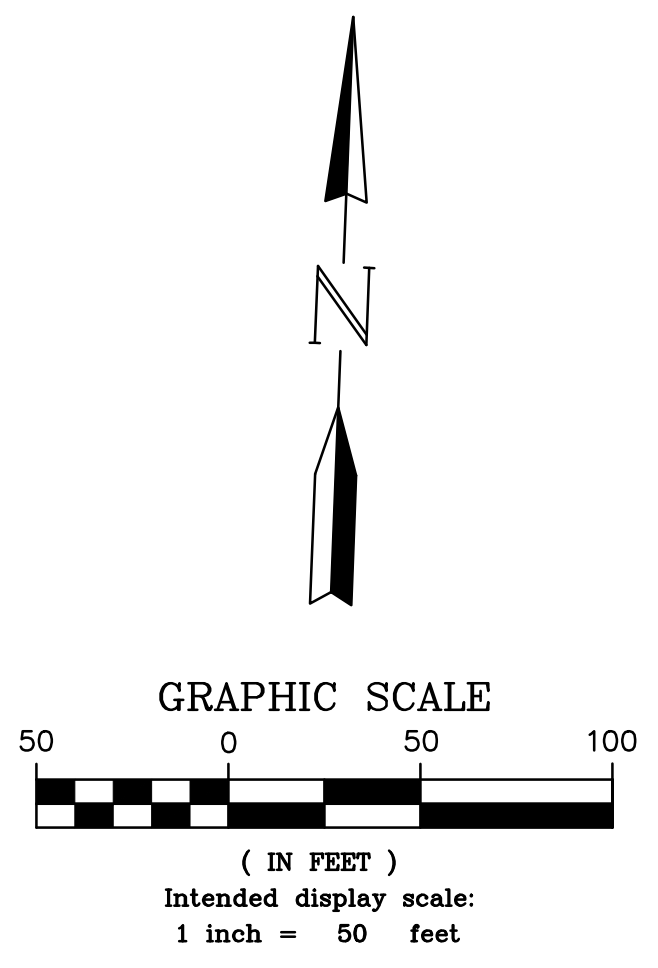
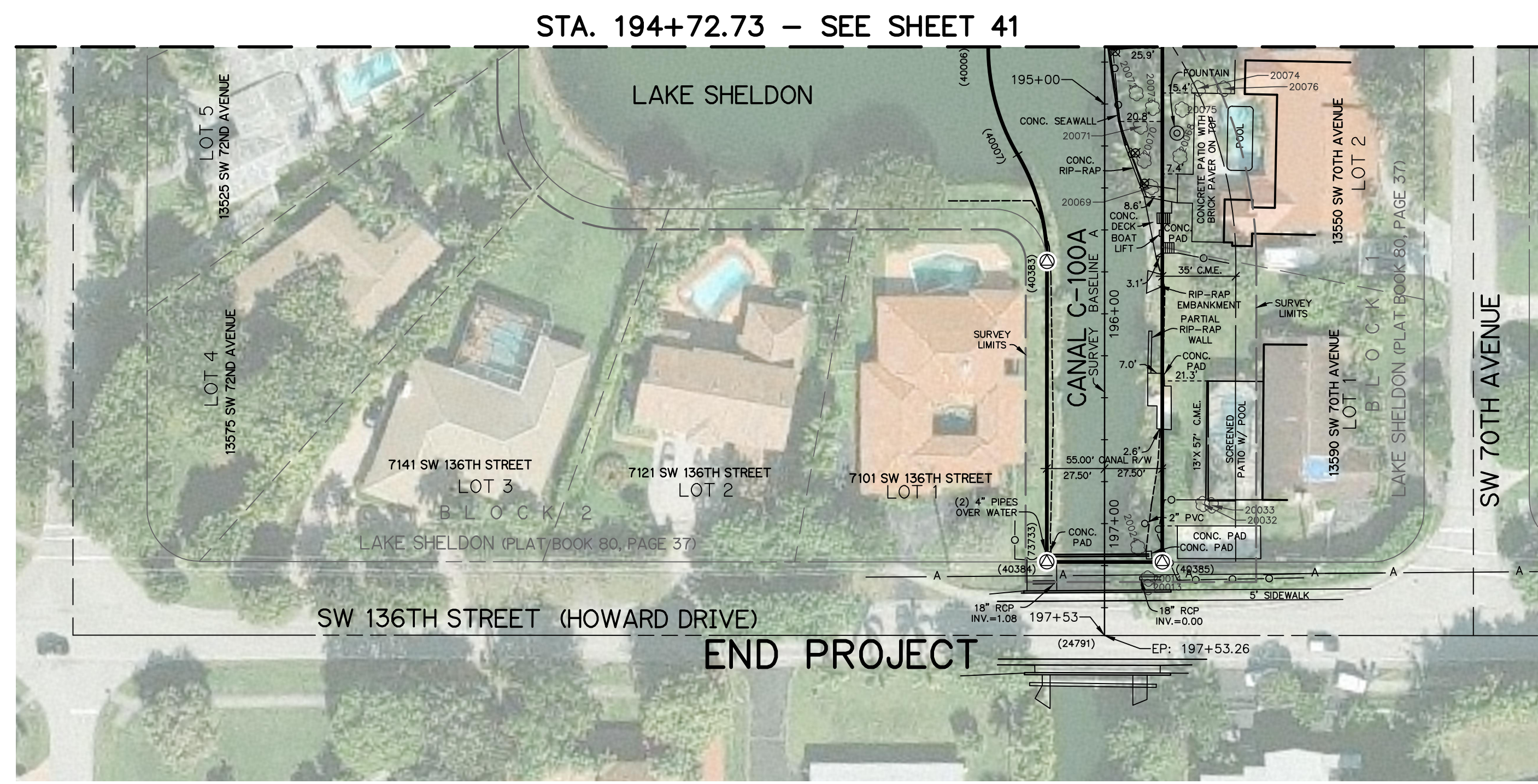
FIELD BOOK(S): 1723, 1724, 1725, 1726, 1727, 1728, 1729, 1730, 1731, 1734, & 1736

PAGE(S): 1-80, 1-78, 1-79, 1-79, 1-79, 1-17, 1-17, & 1-74

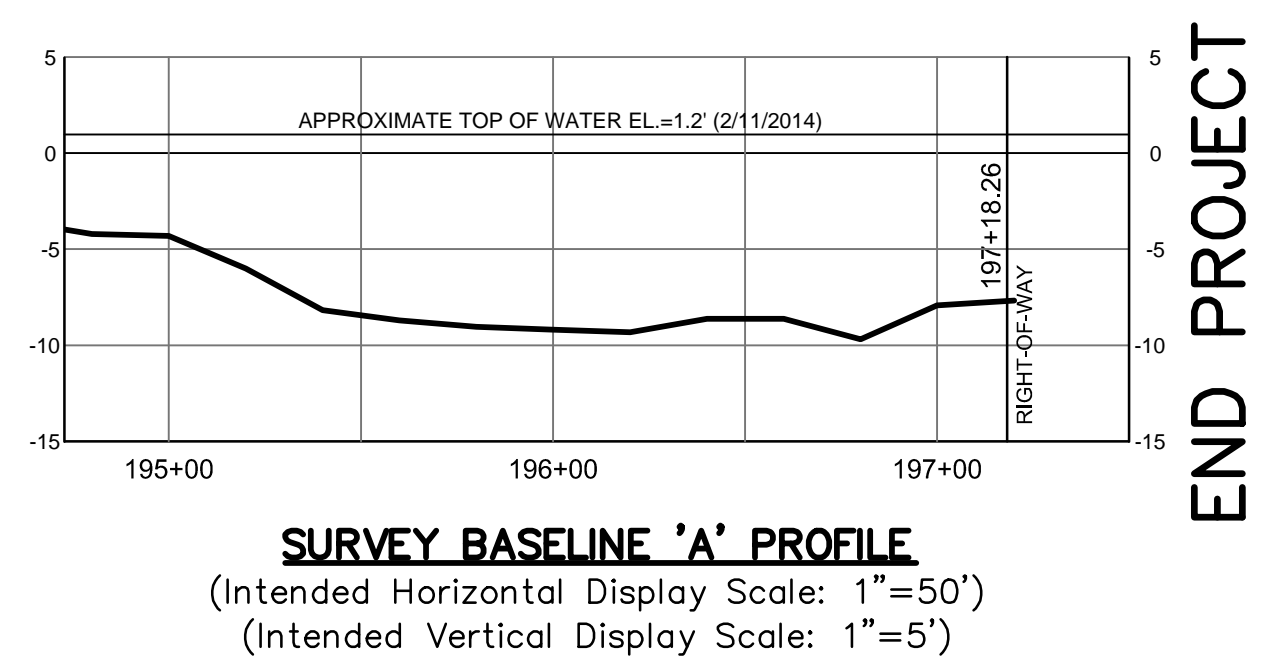
DATA COLLECTOR FILE(S): MULTIPLE

SOUTH FLORIDA WATER MANAGEMENT DISTRICT
INFRASTRUCTURE MANAGEMENT BUREAU – SURVEY AND MAPPING SECTION
P. O. BOX 24680
3301 GUN CLUB ROAD
WEST PALM BEACH, FLORIDA 33416-4680

NO.	DATE	BY	REVISIONS
1	8-28-14	PA	GENERAL REVISIONS
2		JHY	DRAWN / CHECKED



TREE INFORMATION					
Point Number	Northing	Easting	Latitude	Longitude	Size & Description
20013	477132.76	884099.33	N25°38'40.714"	W80°18'29.213"	14" Royal Poinciana
20014	477136.80	884099.20	N25°38'40.754"	W80°18'29.215"	14" Royal Poinciana
20024	477151.45	884093.75	N25°38'40.899"	W80°18'29.273"	14" Royal Poinciana
20032	477173.31	884123.90	N25°38'41.114"	W80°18'28.943"	6" Chinese Fan Palm
20033	477172.83	884128.25	N25°38'41.109"	W80°18'28.895"	4" Chinese Fan Palm
20068	477338.34	884106.69	N25°38'42.75"	W80°18'29.121"	24" Canary Island Date Palm
20069	477323.29	884093.64	N25°38'42.601"	W80°18'29.265"	30" Gumbo Limbo
20070	477335.83	884089.63	N25°38'42.726"	W80°18'29.308"	14" Coconut
20071	477351.91	884087.37	N25°38'42.885"	W80°18'29.332"	12" Queen Palm
20072	477367.74	884084.71	N25°38'43.042"	W80°18'29.36"	12" Queen Palm
20073	477361.04	884092.53	N25°38'42.975"	W80°18'29.275"	12" Queen Palm
20074	477371.14	884114.12	N25°38'43.074"	W80°18'29.038"	24" Canary Island Date Palm
20075	477360.77	884106.87	N25°38'42.972"	W80°18'29.118"	24" Canary Island Date Palm
20076	477371.47	884126.42	N25°38'43.077"	W80°18'28.904"	24" Canary Island Date Palm



CANAL 100A BANK STABILIZATION
BOUNDARY & TOPOGRAPHIC
MIAMI-DADE, FLORIDA
SECTIONS 10, 11, & 14
TOWNSHIP 55 SOUTH
RANGE 40 EAST

CADD FILE NO. 13-1009-06
DRAWING NO. 42 SHEET OF 68

DRIVING: JHY | CHECKED: GY | DATE: 6/27/14 | SCALE: AS SHOWN
FIELD PERSONS: LUCAS YOUNG & BRIAN YANCY
FIELD DATES: JUNE 18, 2014
FIELD BOOKS: 1723, 1724, 1725, 1726, 1728, 1729, 1731, 1734, & 1736
PAGE(S): 1-80, 1-78, 1-79, 1-79, 1-17, 1-17, & 1-74
DATA COLLECTOR FILE(S): MULTIPLE

SOUTH FLORIDA WATER MANAGEMENT DISTRICT
INFRASTRUCTURE MANAGEMENT BUREAU – SURVEY AND MAPPING SECTION
P. O. BOX 24680
3301 GUN CLUB ROAD
WEST PALM BEACH, FLORIDA 33416-4680

DATE	CHECKED	PA	GENERAL REVISIONS
8-28-14	JHY	PA	GENERAL REVISIONS